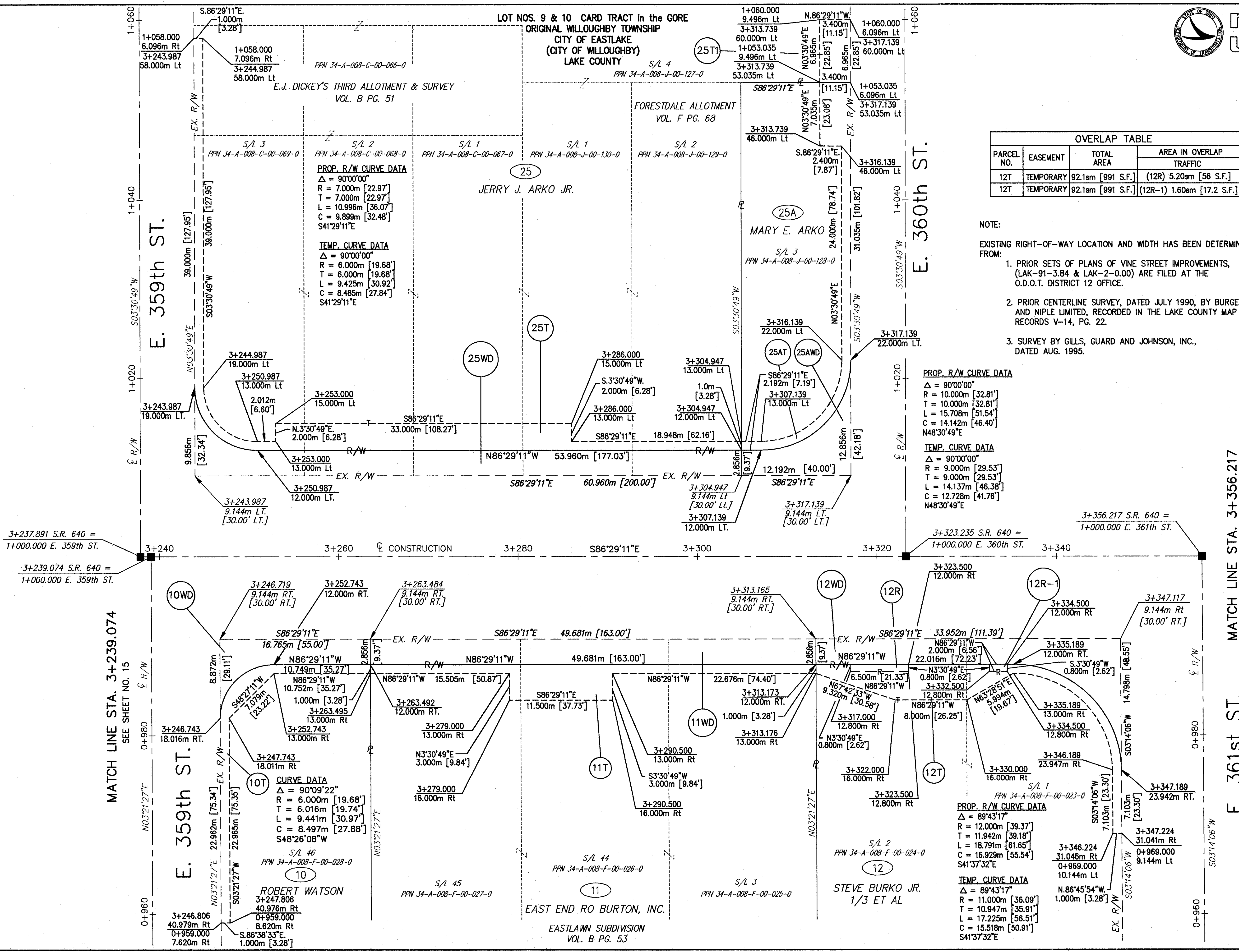


OVERLAP TABLE			
PARCEL NO.	EASEMENT	TOTAL AREA	AREA IN OVERLAP
			TRAFFIC
12T	TEMPORARY	92.1sm [991 S.F.]	(12R) 5.20sm [56 S.F.]
12T	TEMPORARY	92.1sm [991 S.F.]	(12R-1) 1.60sm [17.2 S.F.]

NOTE:
EXISTING RIGHT-OF-WAY LOCATION AND WIDTH HAS BEEN DETERMINED FROM:

1. PRIOR SETS OF PLANS OF VINE STREET IMPROVEMENTS, (LAK-91-3.84 & LAK-2-0.00) ARE FILED AT THE O.D.O.T. DISTRICT 12 OFFICE.
2. PRIOR CENTERLINE SURVEY, DATED JULY 1990, BY BURGESS AND NIPLE LIMITED, RECORDED IN THE LAKE COUNTY MAP RECORDS V-14, PG. 22.
3. SURVEY BY GILLS, GUARD AND JOHNSON, INC., DATED AUG. 1995.



MATCH LINE STA. 3+239.074
SEE SHEET NO. 15

MATCH LINE STA. 3+356.217
SEE SHEET NO. 19

E. 361st ST.

E. 360th ST.

H:\1998\98208\ROW\RW5.PLT

REV.	DATE	DESCRIPTION
1	2001	PCL 12, Existing RW at the NE corner, Was corrected from a curve to a 90° intersection. The English distance 49.55' has been adjusted to 48.55'