

H:\1998\98208\ROW\RWPL5.DWG



HORIZONTAL SCALE IN METERS

FEDERAL PROJECT NO. 14199

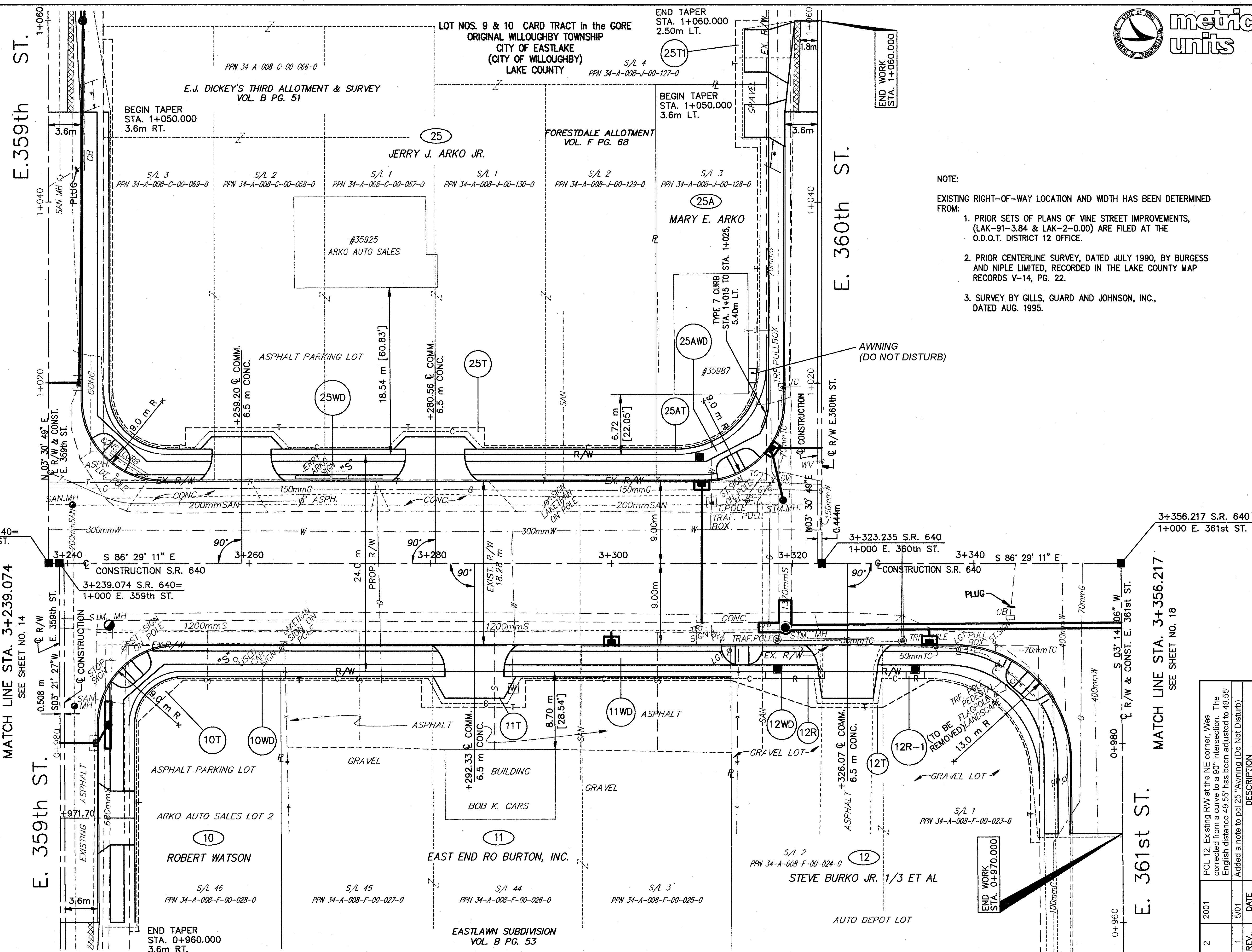
STATE PROJECT NO. 126430

RIGHT OF WAY PLAN STA. 3+239.074 TO STA. 3+356.217

LAK - 640 - 2865 (178)

16/21

184/189



NOTE:  
 EXISTING RIGHT-OF-WAY LOCATION AND WIDTH HAS BEEN DETERMINED FROM:

1. PRIOR SETS OF PLANS OF VINE STREET IMPROVEMENTS, (LAK-91-3.84 & LAK-2-0.00) ARE FILED AT THE O.D.O.T. DISTRICT 12 OFFICE.
2. PRIOR CENTERLINE SURVEY, DATED JULY 1990, BY BURGESS AND NIPLE LIMITED, RECORDED IN THE LAKE COUNTY MAP RECORDS V-14, PG. 22.
3. SURVEY BY GILLS, GUARD AND JOHNSON, INC., DATED AUG. 1995.

MATCH LINE STA. 3+239.074 SEE SHEET NO. 14

MATCH LINE STA. 3+356.217 SEE SHEET NO. 18

REV.	DATE	DESCRIPTION
2	2001	PCL 12. Existing RW at the NE corner. Was corrected from a curve to a 90° intersection. The English distance 49.55' has been adjusted to 48.55'. Added a note to pcl 25 "Awning (Do Not Disturb)"
1	5/01	

BEGIN TAPER STA. 1+050.000 3.6m RT.

END TAPER STA. 1+060.000 2.50m LT.

END TAPER STA. 0+960.000 3.6m RT.

END WORK STA. 0+970.000

END WORK STA. 1+060.000