

REV.	DATE	DESCRIPTION
1	10/28/99	REMOVED OWNER PCL 26

E. 357th ST.

MATCH LINE STA. 3+123.738  
SEE SHEET NO. 12

E. 357th ST.

E. 359th ST.

MATCH LINE STA. 3+239.074  
SEE SHEET NO. 16

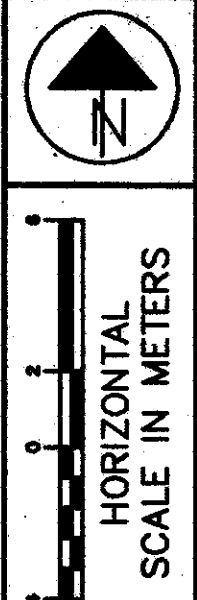
E. 359th ST.

- NOTE:  
EXISTING RIGHT-OF-WAY LOCATION AND WIDTH HAS BEEN DETERMINED FROM:
1. PRIOR SETS OF PLANS OF VINE STREET IMPROVEMENTS, (LAK-91-3.84 & LAK-2-0.00) ARE FILED AT THE O.D.O.T. DISTRICT 12 OFFICE.
  2. PRIOR CENTERLINE SURVEY, DATED JULY 1990, BY BURGESS AND NIPLE LIMITED, RECORDED IN THE LAKE COUNTY MAP RECORDS V-14, PG. 22.
  3. SURVEY BY GILLS, GUARD AND JOHNSON, INC., DATED AUG. 1995.

LAWTON PARK ALLOTMENT  
VOL. B PG. 16

LOT NOS. 9 & 10 CARD TRACT in the GORE  
ORIGINAL WILLOUGHBY TOWNSHIP  
CITY OF EASTLAKE  
(CITY OF WILLOUGHBY)  
LAKE COUNTY.

E.J. DICKEY'S THIRD ALLOTMENT & SURVEY  
VOL. B PG. 51

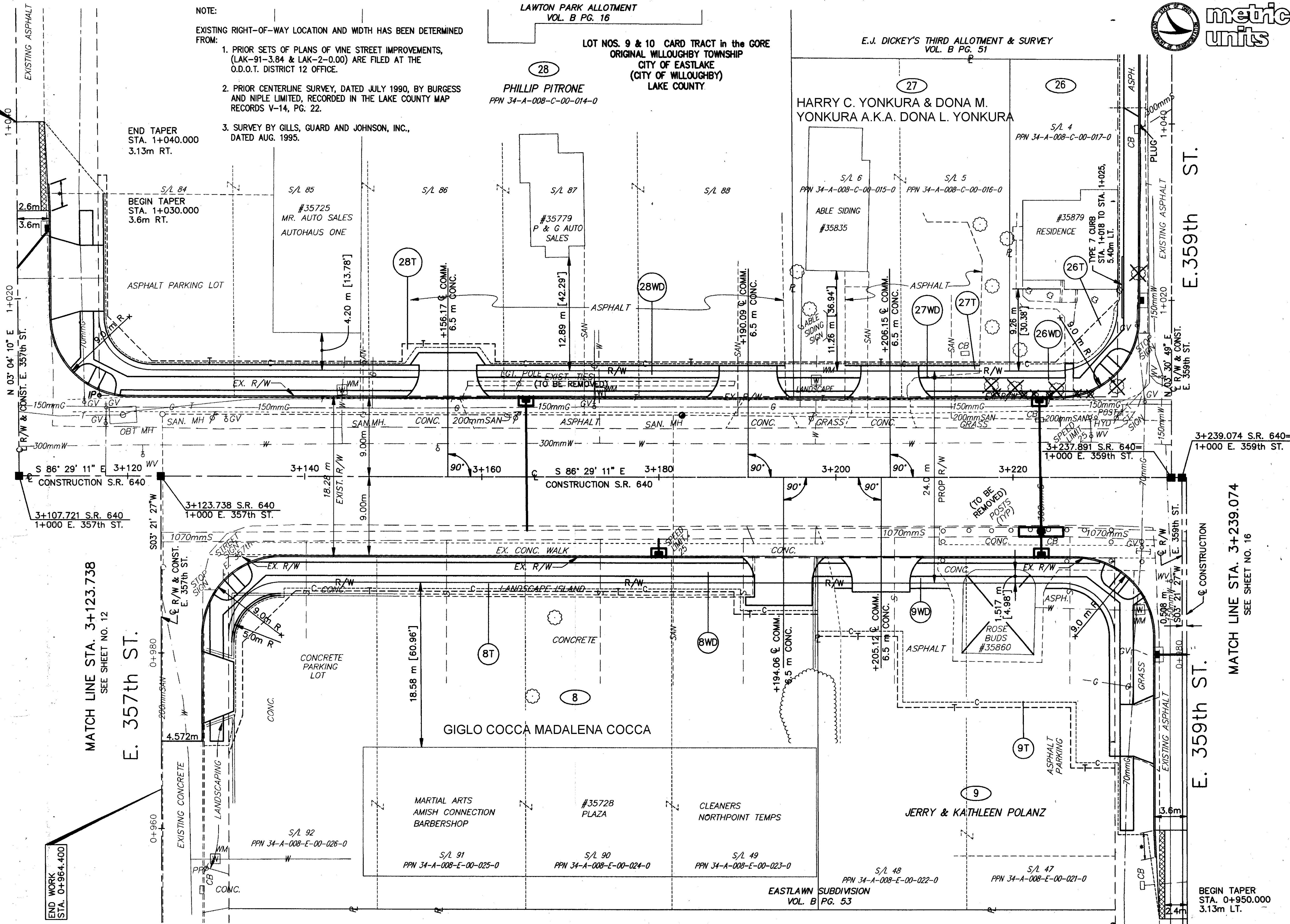


FEDERAL PROJECT NO. 14199  
STATE PROJECT NO. 126430

RIGHT OF WAY PLAN  
STA. 3+123.738 TO STA. 3+239.074

LAK - 640 - 2865 (178)

14/21  
182  
189



END WORK  
STA. 0+964.400

END TAPER  
STA. 1+040.000  
3.13m RT.

BEGIN TAPER  
STA. 1+030.000  
3.6m RT.

BEGIN TAPER  
STA. 0+950.000  
3.13m LT.

EASTLAWN SUBDIVISION  
VOL. B PG. 53

MARTIAL ARTS  
AMISH CONNECTION  
BARBERSHOP

#35728  
PLAZA

CLEANERS  
NORTHPOINT TEMPS

JERRY & KATHLEEN POLANZ

#35725  
MR. AUTO SALES  
AUTOHAUS ONE

#35779  
P & G AUTO  
SALES

HARRY C. YONKURA & DONA M.  
YONKURA A.K.A. DONA L. YONKURA

#35879  
RESIDENCE

ABLE SIDING  
#35835

ROSE  
BUDS  
#35860

8T

8

8WD

9

9T

28T

28WD

27T

27WD

26T

26WD