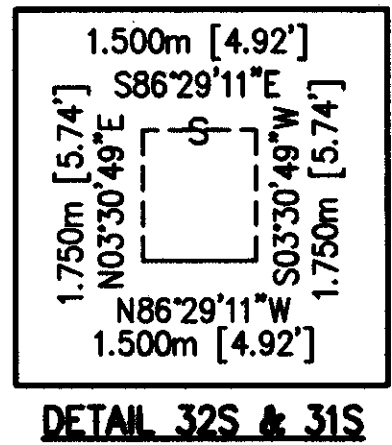


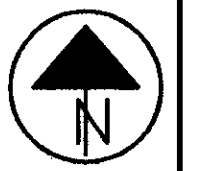
H:\1998\98208\ROW\RW2.DWG



DETAIL 32S & 31S

LOT NOS. 9 & 10 CARD TRACT in the GORE
ORIGINAL WILLOUGHBY TOWNSHIP
CITY OF EASTLAKE
(CITY OF WILLOUGHBY)
LAKE COUNTY

LAWTON PARK ALLOTMENT
VOL. B PG. 16



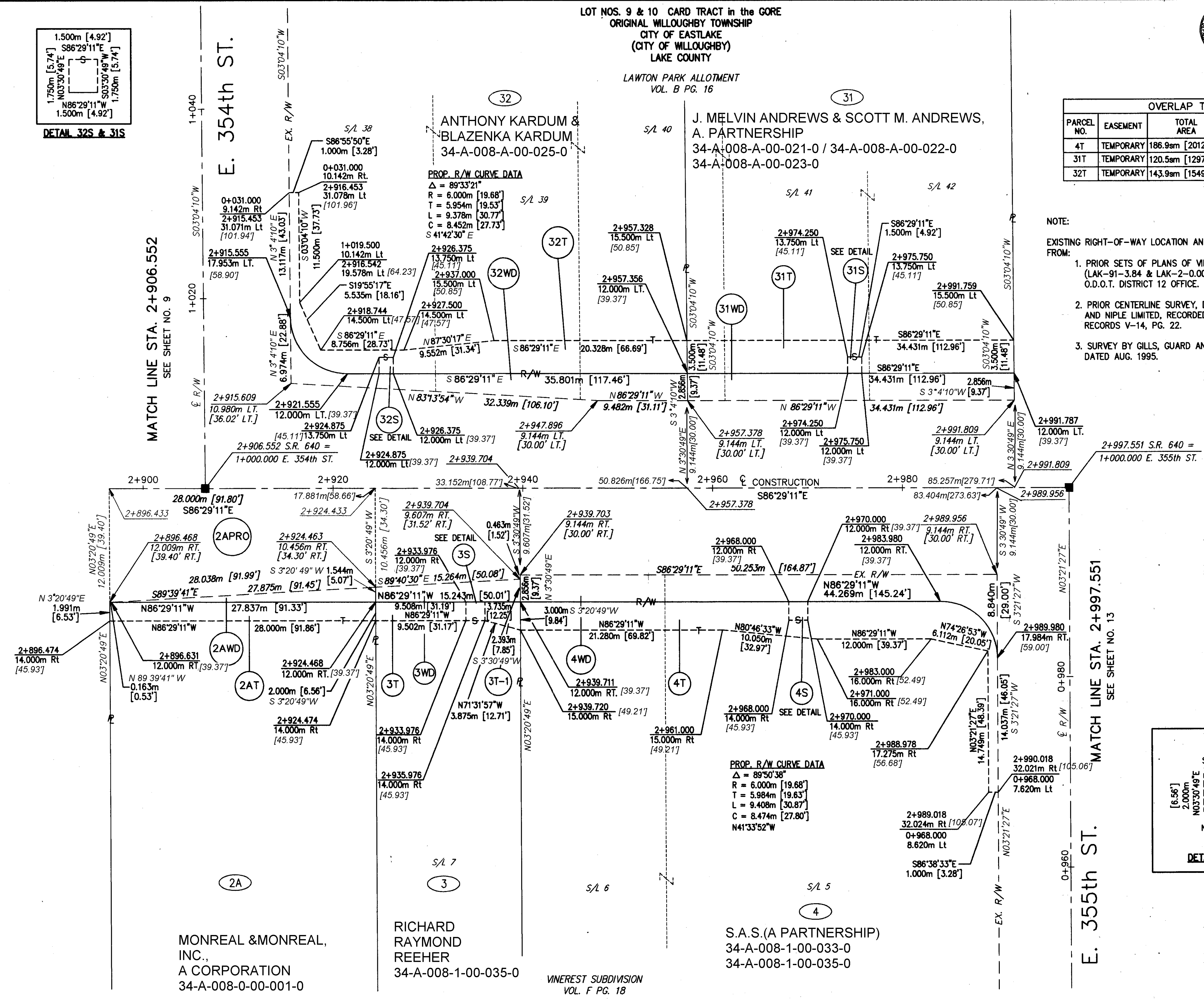
HORIZONTAL
SCALE IN METERS

OVERLAP TABLE			
PARCEL NO.	EASEMENT	TOTAL AREA	AREA IN OVERLAP
4T	TEMPORARY	186.9sm [2012 S.F.]	(4S) 4.0 sm [43.1 S.F.]
31T	TEMPORARY	120.5sm [1297 S.F.]	(31S) 2.625 sm [28.3 S.F.]
32T	TEMPORARY	143.9sm [1549 S.F.]	(32S) 2.625 sm [28.3 S.F.]

NOTE:

EXISTING RIGHT-OF-WAY LOCATION AND WIDTH HAS BEEN DETERMINED FROM:

1. PRIOR SETS OF PLANS OF VINE STREET IMPROVEMENTS, (LAK-91-3.84 & LAK-2-0.00) ARE FILED AT THE O.D.O.T. DISTRICT 12 OFFICE.
2. PRIOR CENTERLINE SURVEY, DATED JULY 1990, BY BURGESS AND NIPLLE LIMITED, RECORDED IN THE LAKE COUNTY MAP RECORDS V-14, PG. 22.
3. SURVEY BY GILLS, GUARD AND JOHNSON, INC., DATED AUG. 1995.



MATCH LINE STA. 2+906.552
SEE SHEET NO. 9

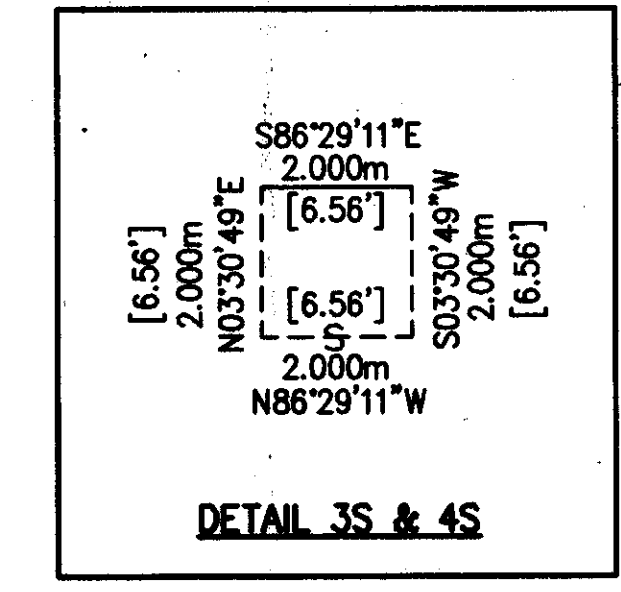
MATCH LINE STA. 2+997.551
SEE SHEET NO. 13

MONREAL & MONREAL,
INC.,
A CORPORATION
34-A-008-0-00-001-0

RICHARD
RAYMOND
REEHER
34-A-008-1-00-035-0

S.A.S. (A PARTNERSHIP)
34-A-008-1-00-033-0
34-A-008-1-00-035-0

VINEREST SUBDIVISION
VOL. F PG. 18



DETAIL 3S & 4S

FEDERAL PROJECT NO. 14199

STATE PROJECT NO. 126430

RIGHT OF WAY PLAN
STA. 2+906.552 TO STA. 2+997.551

LAK - 640 - 2.865 (178)

11/21

179
189