

LOT NOS. 9 & 10 CARD TRACT in the GORE  
ORIGINAL WILLOUGHBY TOWNSHIP  
CITY OF EASTLAKE  
(CITY OF WILLOUGHBY)  
LAKE COUNTY

LAWTON PARK ALLOTMENT  
VOL. B PG. 16



HORIZONTAL  
SCALE IN METERS

FEDERAL  
PROJECT NO.  
14199

STATE  
PROJECT NO.  
126430

RIGHT OF WAY PLAN  
STA. 2+798.000 TO STA. 2+906.552

LAK - 640 - 2865 (178)

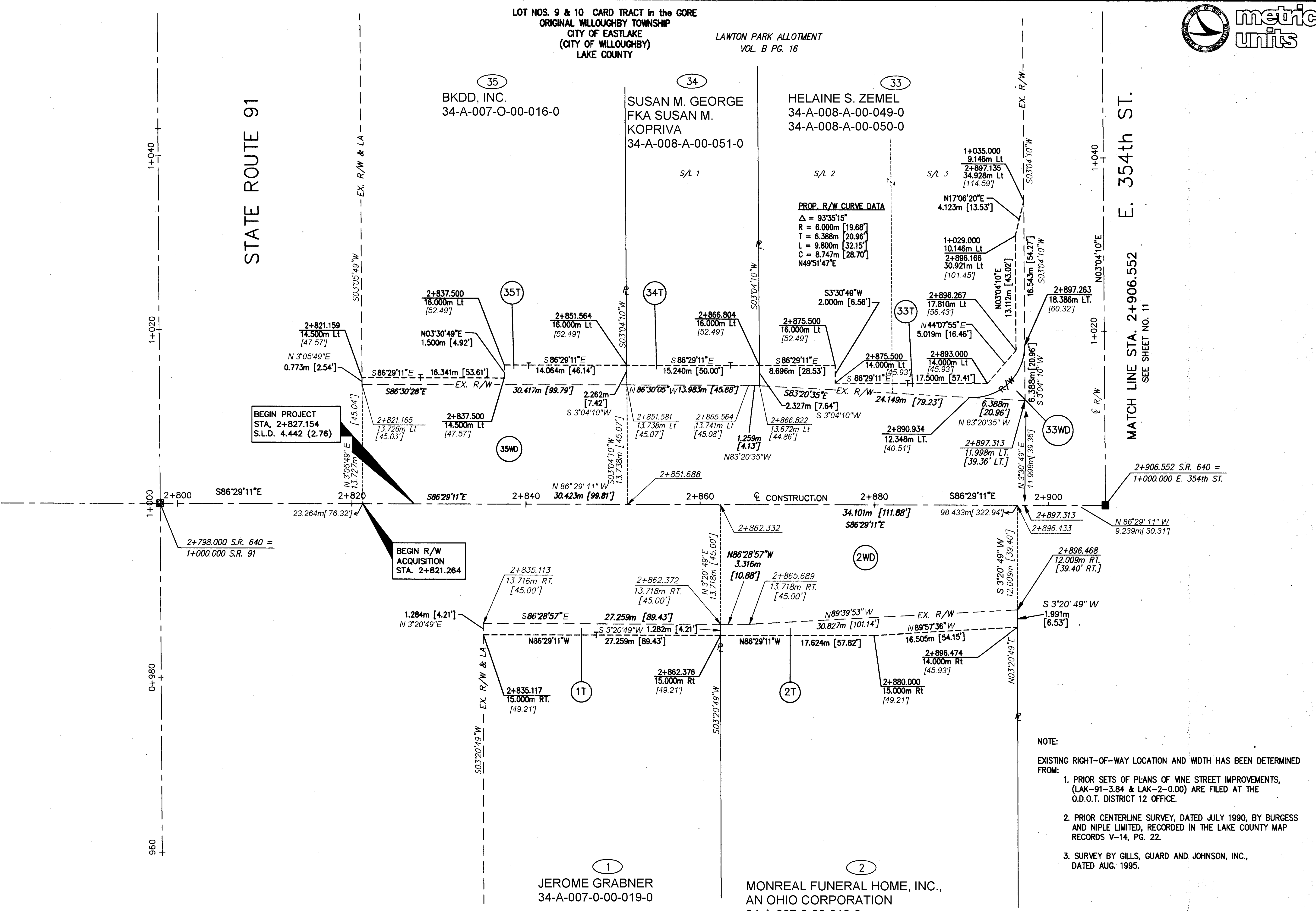
9 / 21

177  
189

STATE ROUTE 91

E. 354th ST.  
MATCH LINE STA. 2+906.552  
SEE SHEET NO. 11

PROP. R/W CURVE DATA  
Δ = 93°35'15"  
R = 6.000m [19.68']  
T = 6.388m [20.96']  
L = 9.800m [32.15']  
C = 8.747m [28.70']  
N49°51'47"E



NOTE:  
EXISTING RIGHT-OF-WAY LOCATION AND WIDTH HAS BEEN DETERMINED FROM:  
1. PRIOR SETS OF PLANS OF VINE STREET IMPROVEMENTS, (LAK-91-3.84 & LAK-2-0.00) ARE FILED AT THE O.D.O.T. DISTRICT 12 OFFICE.  
2. PRIOR CENTERLINE SURVEY, DATED JULY 1990, BY BURGESS AND NIPLE LIMITED, RECORDED IN THE LAKE COUNTY MAP RECORDS V-14, PG. 22.  
3. SURVEY BY GILLS, GUARD AND JOHNSON, INC., DATED AUG. 1995.

H:\1998\98208\ROW\RW1.DWG