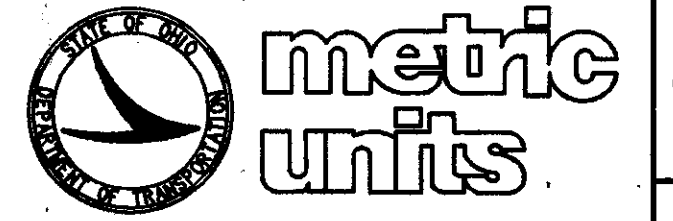


LOT NOS. 9 & 10 CARD TRACT in the GORE
ORIGINAL WILLOUGHBY TOWNSHIP
CITY OF EASTLAKE
(CITY OF WILLOUGHBY)
LAKE COUNTY

LAWTON PARK ALLOTMENT
VOL. B PG. 16



HORIZONTAL
SCALE IN METERS

FEDERAL
PROJECT NO.
14199

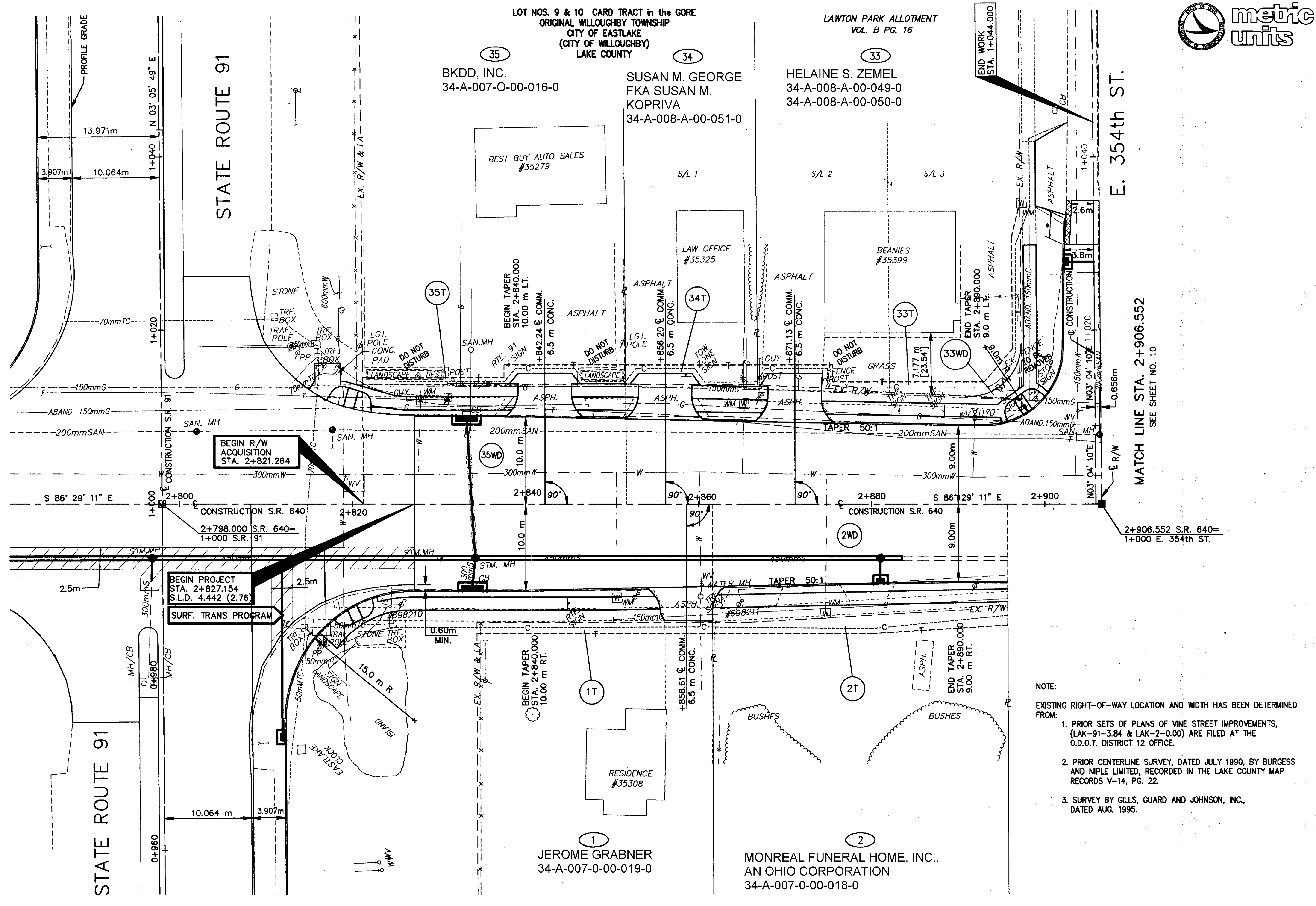
STATE
PROJECT NO.
126430

RIGHT OF WAY PLAN
STA. 2+798.000 TO STA. 2+906.552

LAK - 640 - 2865 (178)

8 / 21

176
189



BEGIN R/W ACQUISITION
STA. 2+821.264

BEGIN PROJECT
STA. 2+827.154
S.L.D. 4.442 (2.76)

SURF. TRANS PROGRAM

NOTE:
EXISTING RIGHT-OF-WAY LOCATION AND WIDTH HAS BEEN DETERMINED FROM:
1. PRIOR SETS OF PLANS OF VINE STREET IMPROVEMENTS, (LAK-91-3.84 & LAK-2-0.00) ARE FILED AT THE O.D.O.T. DISTRICT 12 OFFICE.
2. PRIOR CENTERLINE SURVEY, DATED JULY 1990, BY BURGESS AND NIPLE LIMITED, RECORDED IN THE LAKE COUNTY MAP RECORDS V-14, PG. 22.
3. SURVEY BY GILLS, GUARD AND JOHNSON, INC., DATED AUG. 1995.

E. 354th ST.
MATCH LINE STA. 2+906.552
SEE SHEET NO. 10

END WORK
STA. 1+044.000

END TAPER
STA. 2+890.000
9.00 m LT.

END TAPER
STA. 2+890.000
9.00 m RT.

BKDD, INC.
34-A-007-O-00-016-0

SUSAN M. GEORGE
FKA SUSAN M.
KOPRIVA
34-A-008-A-00-051-0

HELAIN E. ZEMEL
34-A-008-A-00-049-0
34-A-008-A-00-050-0

JEROME GRABNER
34-A-007-0-00-019-0

MONREAL FUNERAL HOME, INC.,
AN OHIO CORPORATION
34-A-007-0-00-018-0