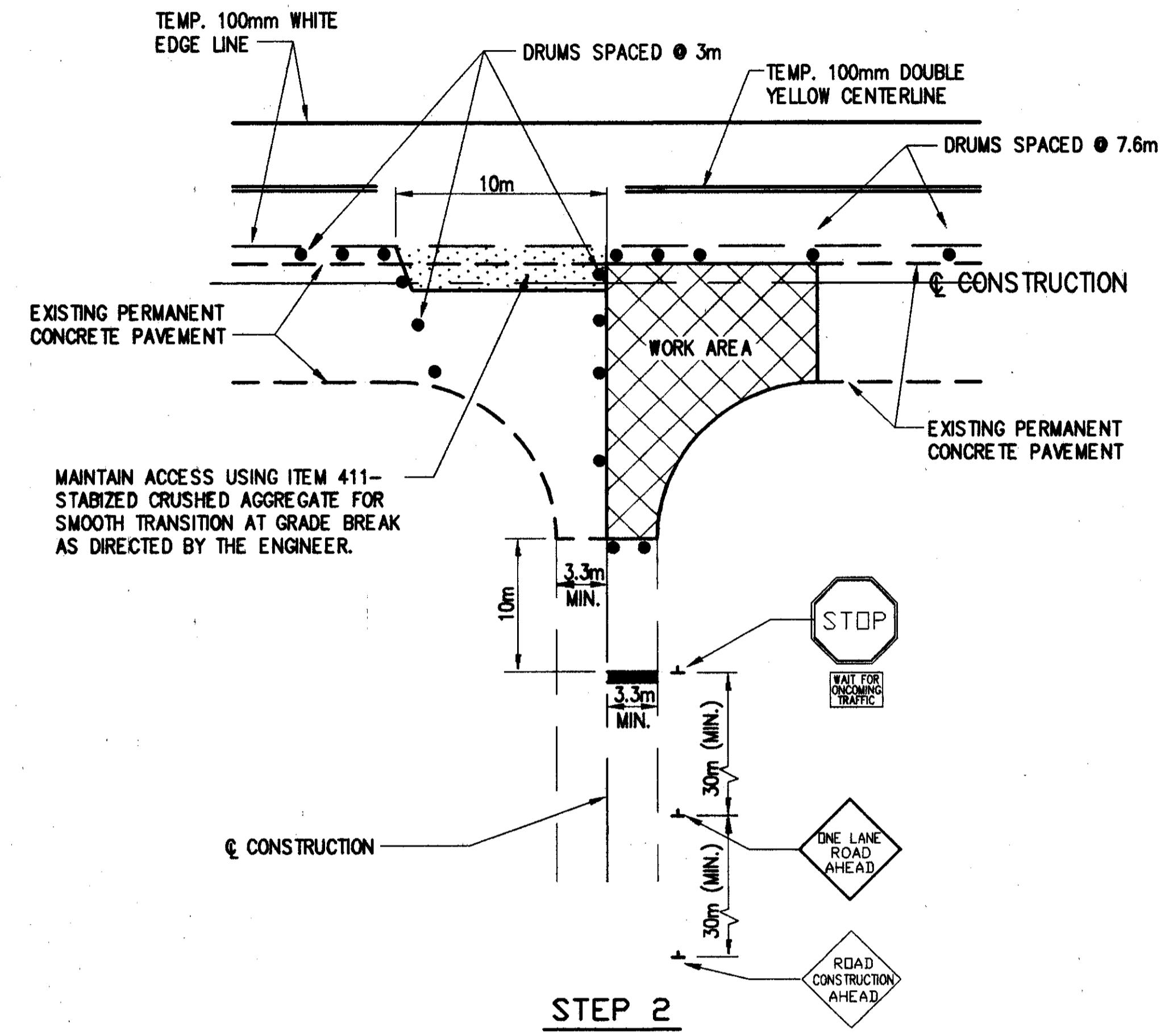
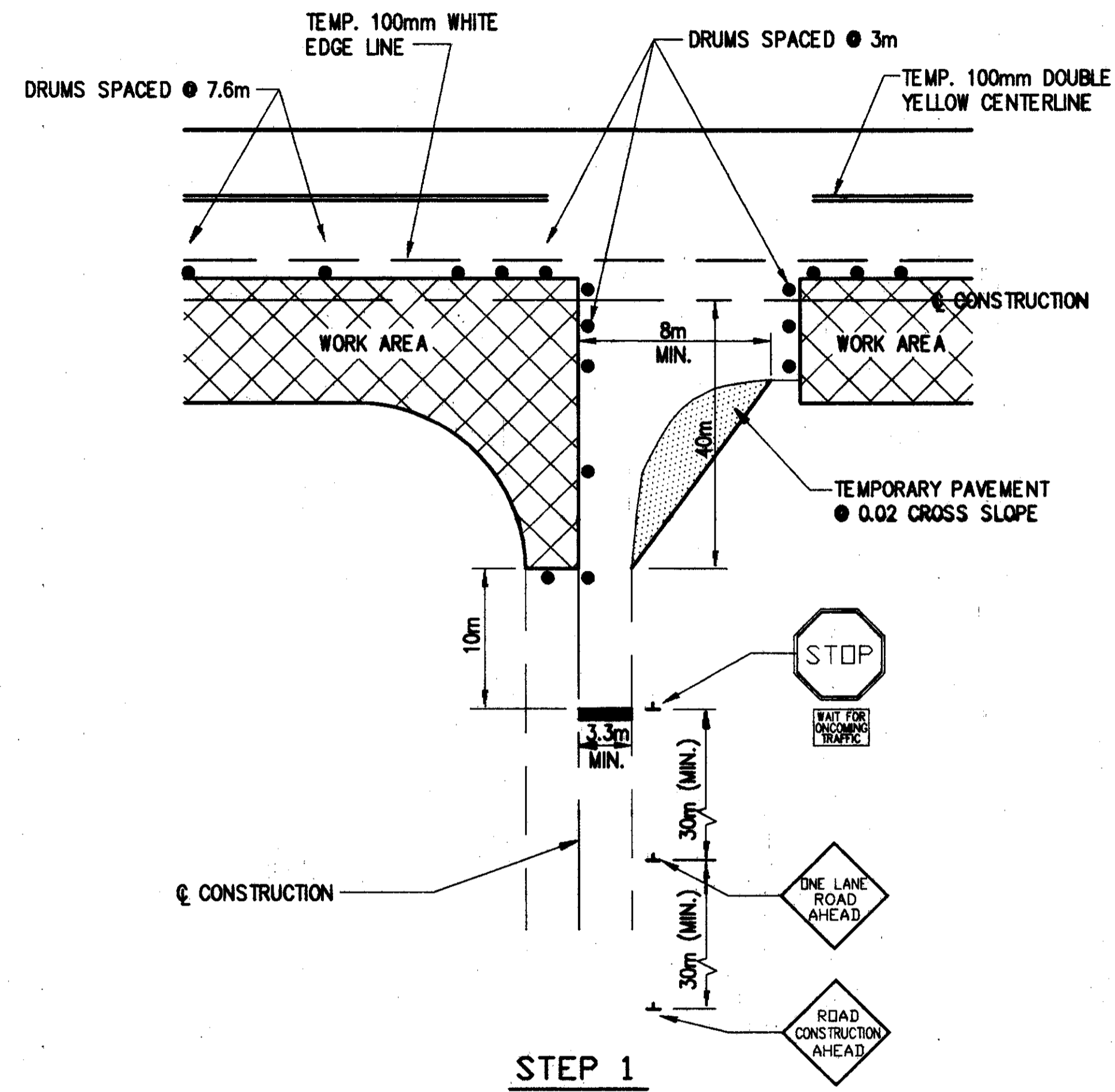


# MAINTENANCE OF TRAFFIC MISCELLANEOUS DETAILS



## REDUCTION TO ONE LANE SIDE STREET ACCESS

TRAFFIC TO BE MAINTAINED ON THE FOLLOWING SIDE  
OF THE ROADWAY USING TEMPORARY PAVEMENT  
DURING STEP 1 OF INTERSECTION CONSTRUCTION

SIDESTREET:	SIDE OF ROADWAY:
E. 355 TH STREET	EAST SIDE
E. 357 TH STREET	EAST SIDE
E. 359 TH STREET	EAST SIDE
E. 360 TH STREET	EAST SIDE
E. 362 ND STREET	WEST SIDE
E. 363 RD STREET	WEST SIDE

**NOTES:**

NO TEMPORARY PAVEMENT REQUIRED AT E. 357 TH. STREET

ALL OTHER INTERSECTIONS TO BE CLOSED DURING FULL DEPTH PAVEMENT REPLACEMENT.

PLEASE REFER TO SIDE STREET CROSS SECTIONS FOR APPROXIMATE LIMITS OF TEMPORARY PAVEMENT AND GRADING.

H:\1998\98208\DWG\MOT\_TRAF\141996I.DWG (PLOT)

CALC. BY:  
A.E.P.  
CHECKED BY:  
I.M.H.

MAINTENANCE OF TRAFFIC  
MISCELLANEOUS DETAILS

LAK-640-2865 (178)