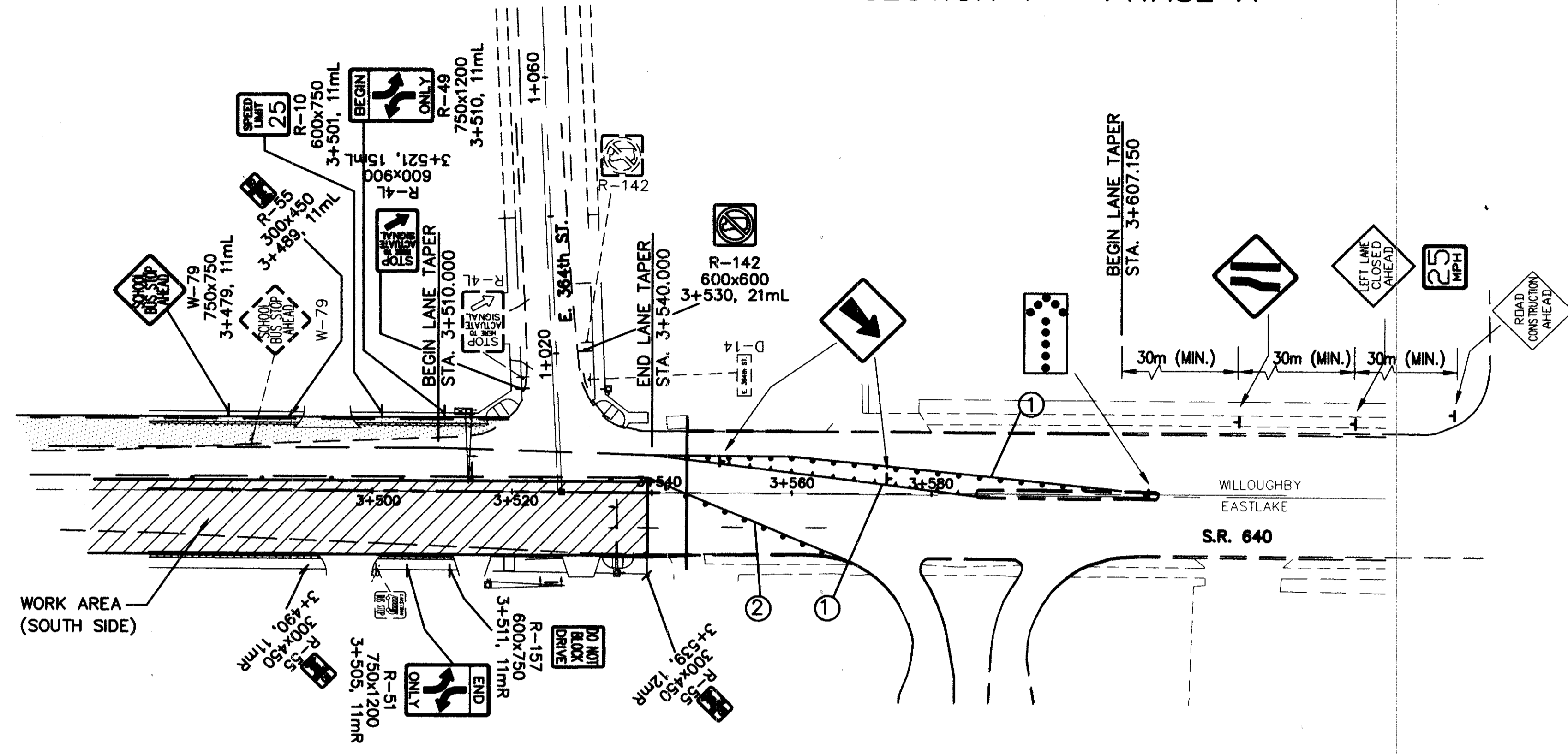


MAINTENANCE OF TRAFFIC SECTION 1 - PHASE A

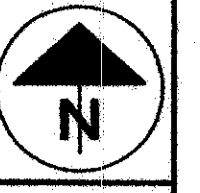
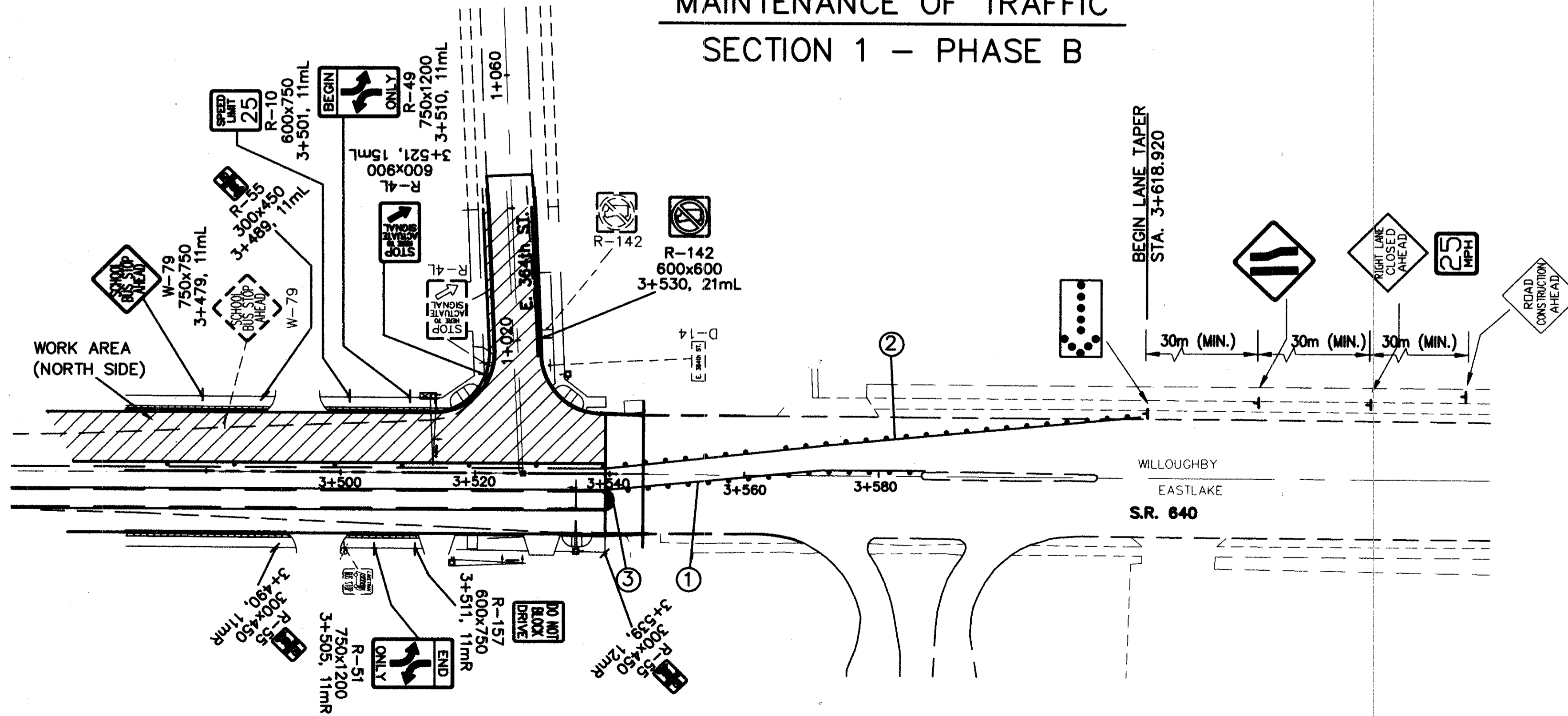
NOTE: TRAFFIC CONES AND DRUMS SHALL BE SPACED AT 3 METER INCREMENTS IN PAVEMENT TRANSITION AREAS.



ESTIMATED QUANTITIES - SECTION 1 - PHASE A & B				
PHASE NO.	STATION TO STATION	614		
		TEMPORARY EDGE LINE CLASS I, 740.06 TYPE 1 WHITE	TEMPORARY CENTER LINE CLASS I, 740.06 TYPE 1 DOUBLE SOLID	TEMPORARY ISLAND MARKING CLASS I
		METER	METER	SQ. METER
A	3+540.000 TO 3+607.150	31.0	115.0	
B	3+540.000 TO 3+618.920	80.0	48.0	3.7
TOTALS CARRIED TO MAINTENANCE OF TRAFFIC GENERAL NOTES		111.0	163.0	3.7

- ① TEMPORARY CENTER LINE, YELLOW, CLASS I, 740.06 TYPE 1
- ② TEMPORARY EDGE LINE, WHITE, CLASS I, 740.06 TYPE 1
- ③ TEMPORARY ISLAND MARKING, YELLOW, CLASS I
- PLASTIC TRAFFIC DRUM
- TRAFFIC CONE (ATTACHED TO PAVEMENT)
- ▨ PROPOSED PERMANENT PAVEMENT
- ▩ TEMPORARY PAVEMENT

MAINTENANCE OF TRAFFIC SECTION 1 - PHASE B



HORIZONTAL SCALE IN METERS

CALC. BY: A.E.P.
CHECKED BY: I.M.H.

MAINTENANCE OF TRAFFIC
LANE CLOSURE DETAILS

LAK-640-2.865 (1.78)