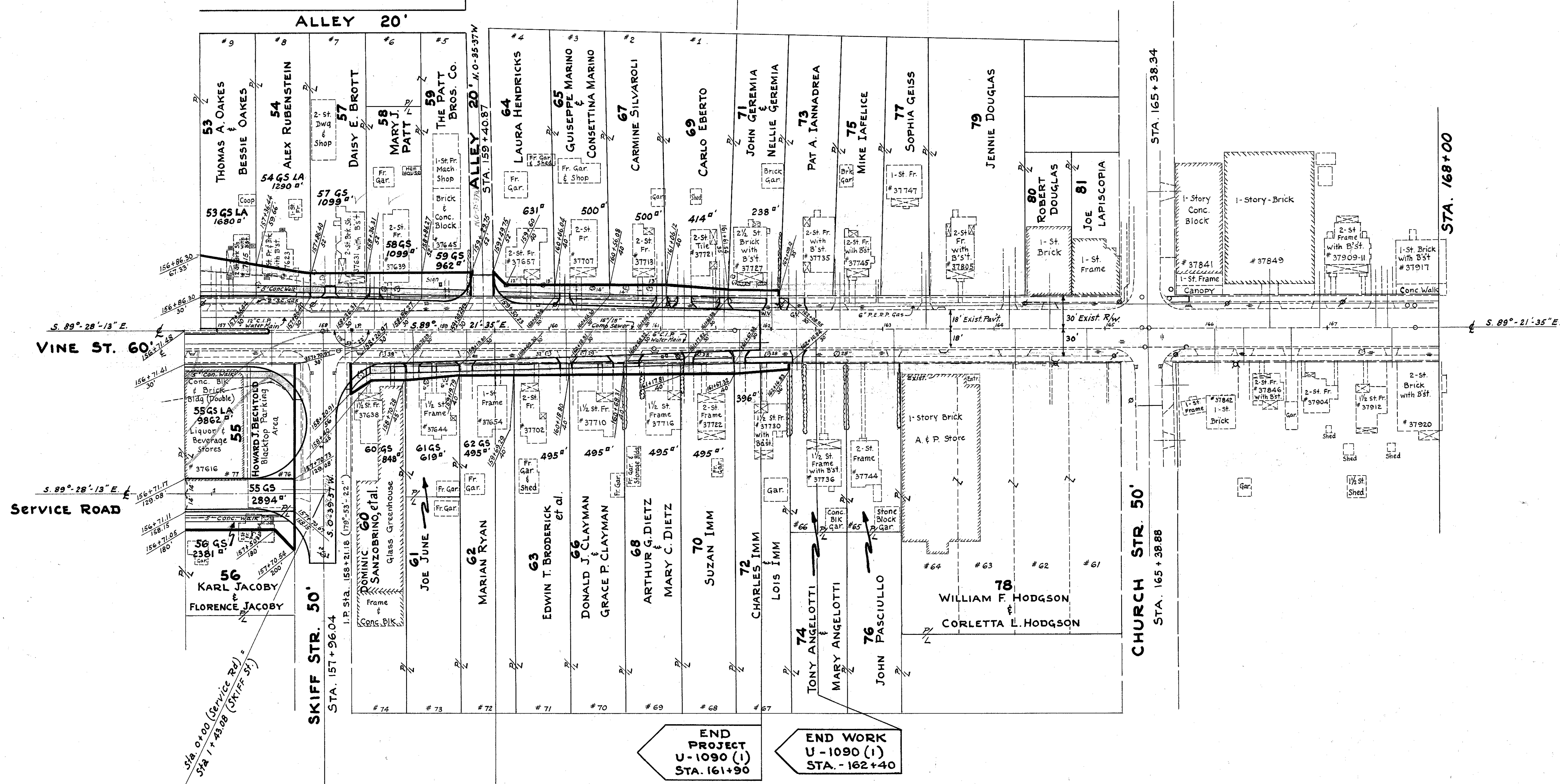


O.L. 109
MERCHANT'S SURVEY
DICKEY'S 2ND SURVEY

O.L. 86



END LIMITED ACCESS
STA. 157+96.04

END PROJECT
U-1090 (I)
STA. 161+90

END WORK
U-1090 (I)
STA. 162+40

END PROJECT
UG 1090 (I)
STA. 159+50

RESUME PROJECT
U-1090 (I)
STA. 159+50

ST. JOHN'S SURVEY

Scale: 1" = 50'

RIGHT-OF-WAY STA. 156+71.48 TO STA. 168+00