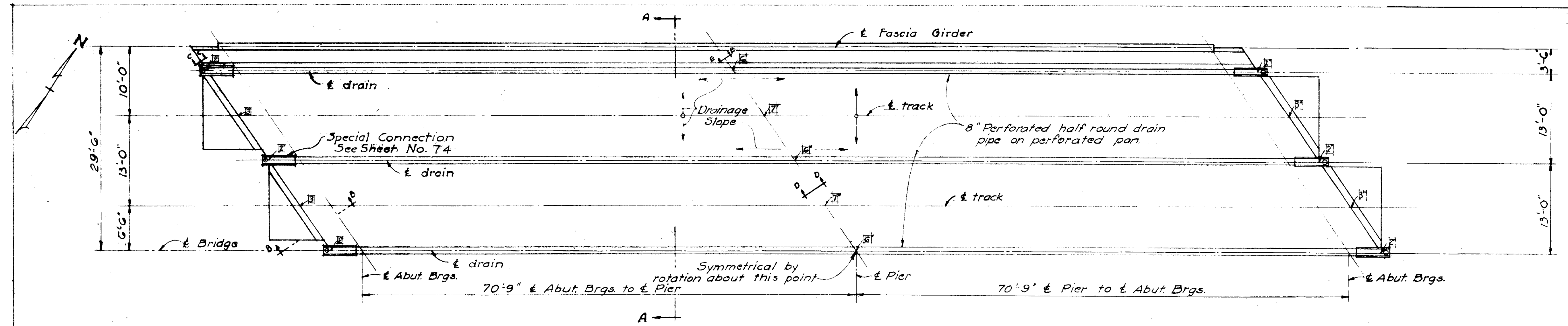
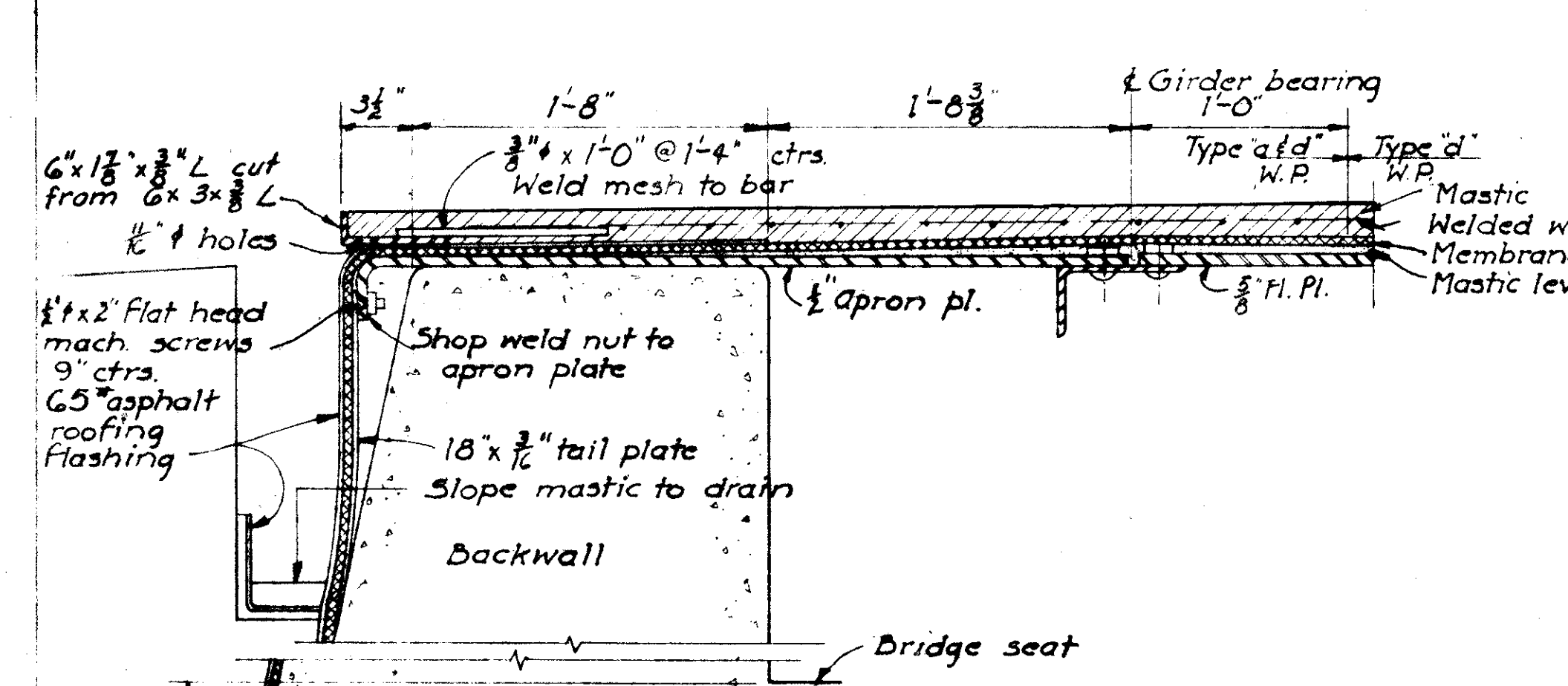


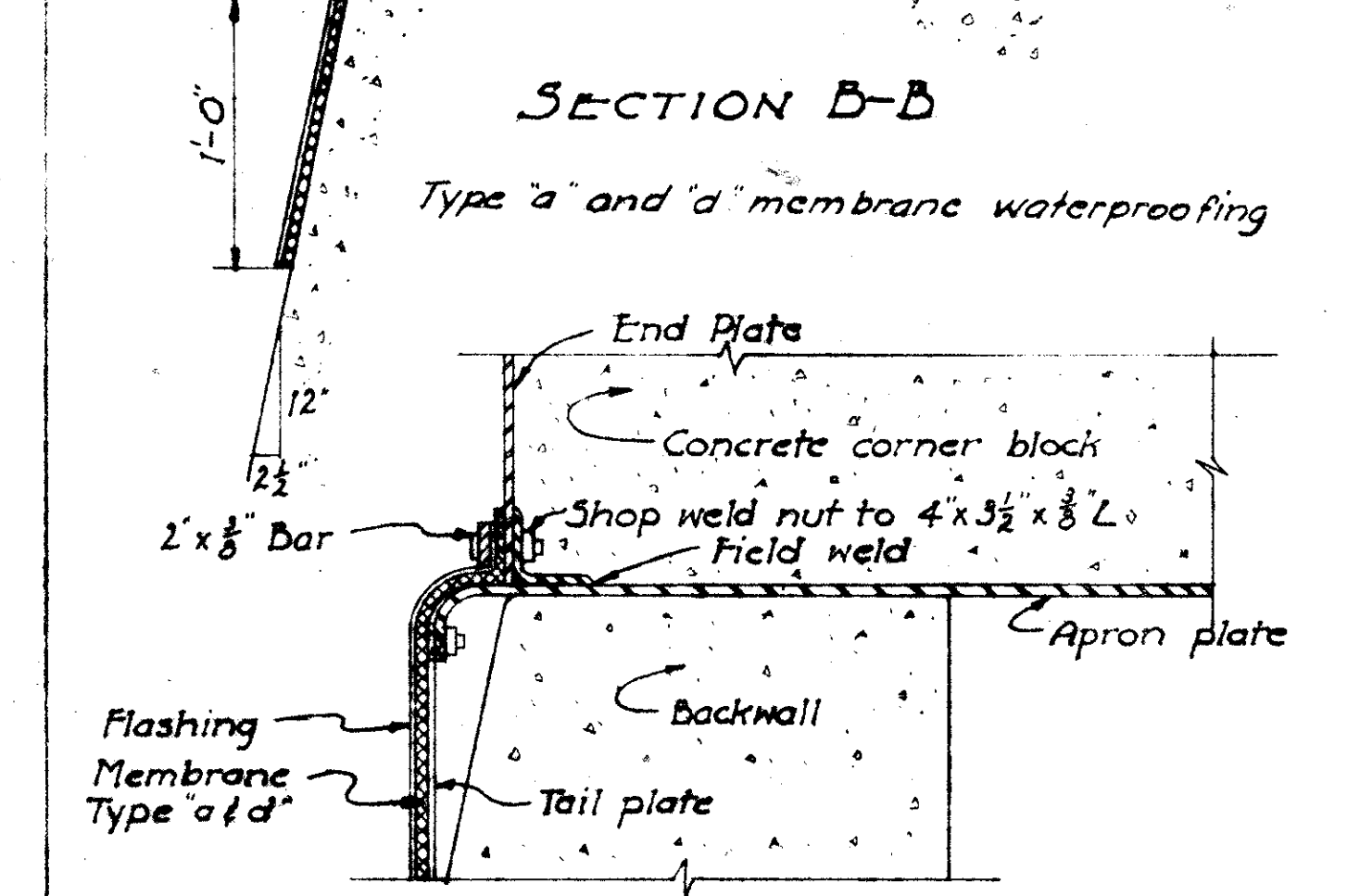
LAK-640-2.56



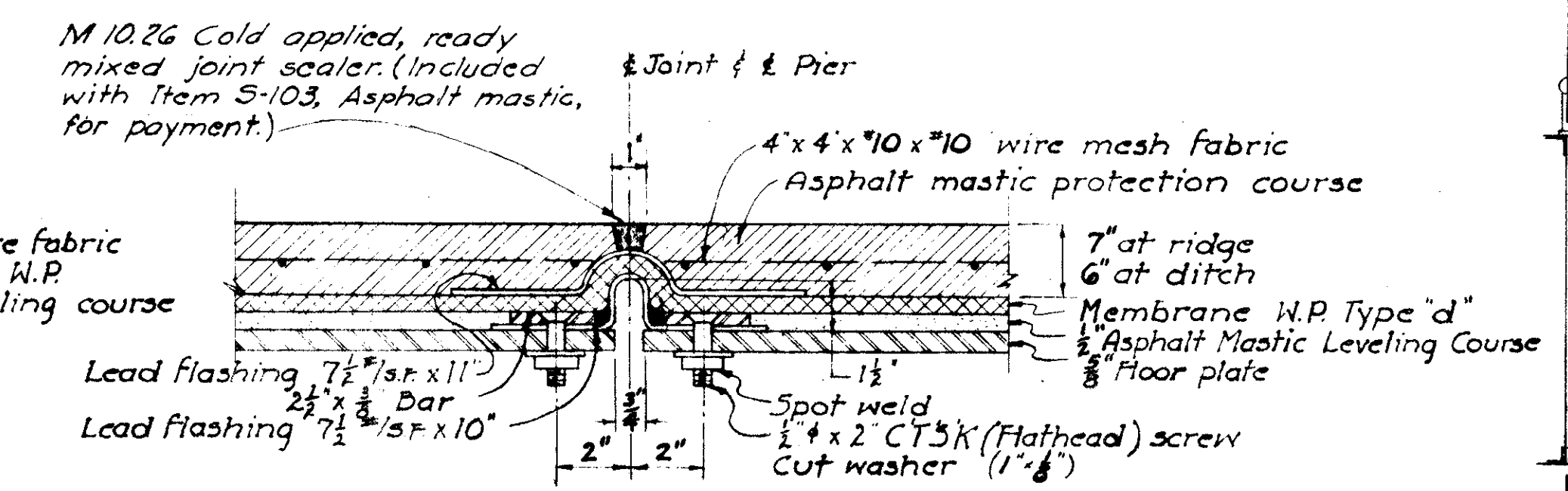
**HALF PLAN**  
 \*G indicates the thickness of the Asphalt Mastic Topping at locations shown.



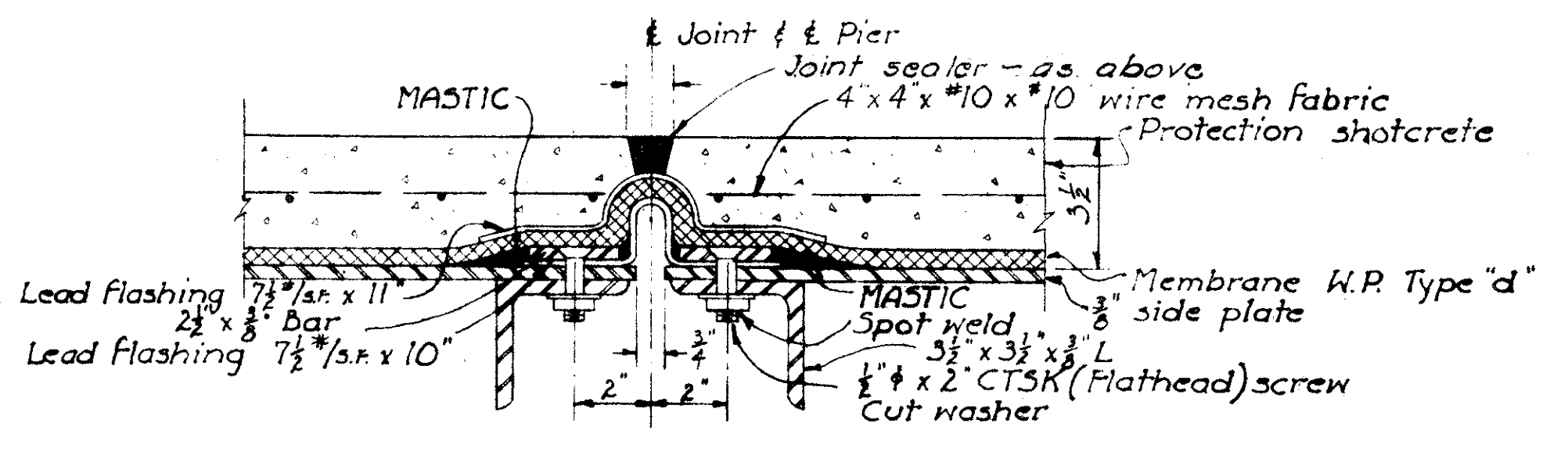
**SECTION B-B**  
 Type 'a' and 'd' membrane waterproofing



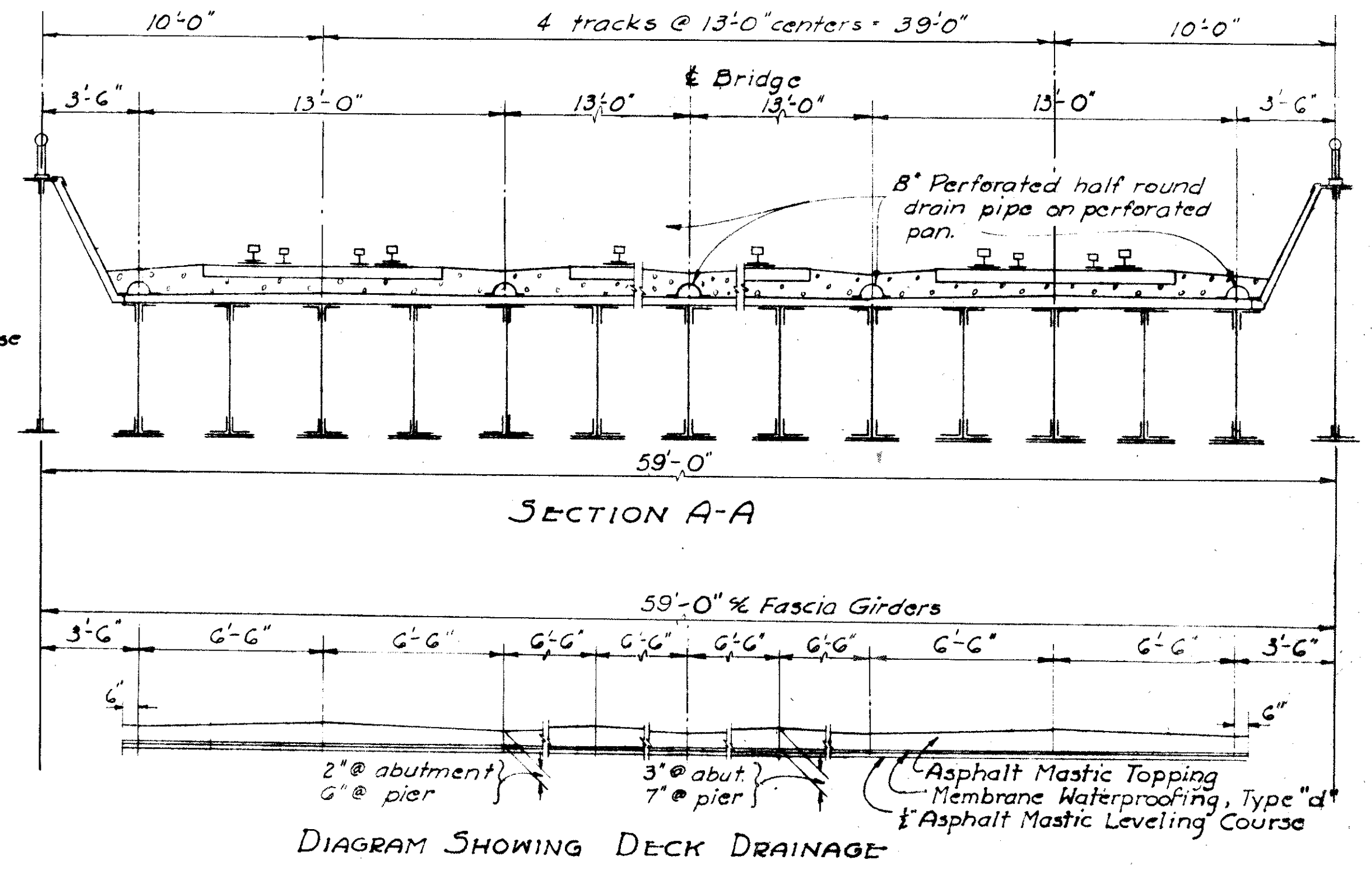
**SECTION C-C**



**SECTION D-D**



**SECTION E-E**



**DIAGRAM SHOWING DECK DRAINAGE**

STATE OF OHIO  
 DEPARTMENT OF HIGHWAYS  
 DIVISION OF DESIGN AND CONSTRUCTION  
 BUREAU OF BRIDGES

**WATERPROOFING AND DRAINAGE  
 DETAILS**  
 BRIDGE NO. LAK-640-0282  
 N.Y.C. RR. OVER SR. 640

Lake County Sta. 149+06.60

Grasselli	WCK	BEG
		7-8-59