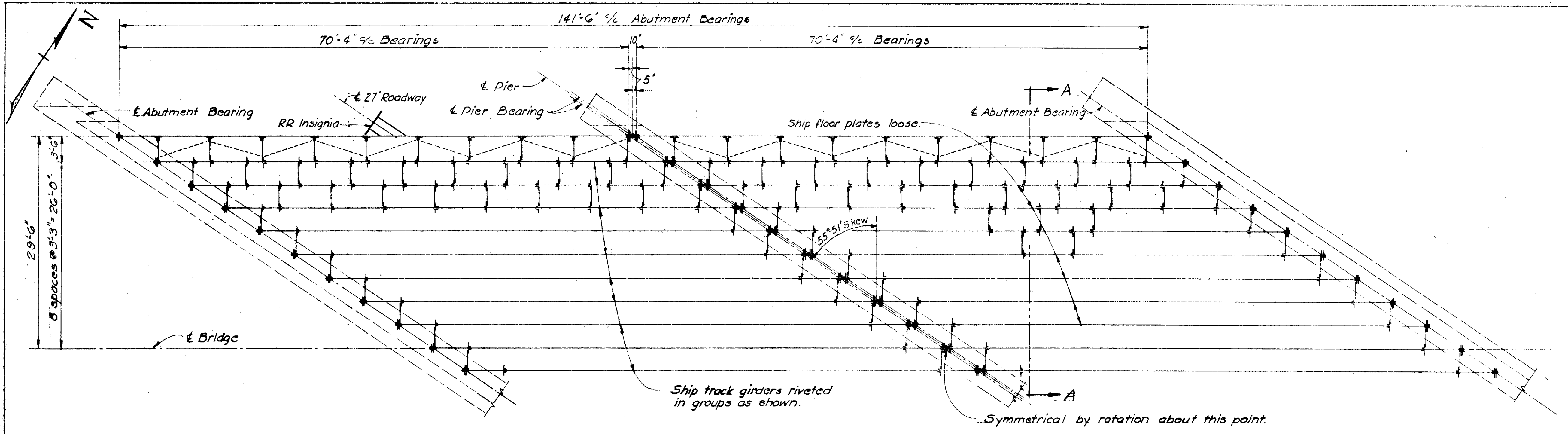
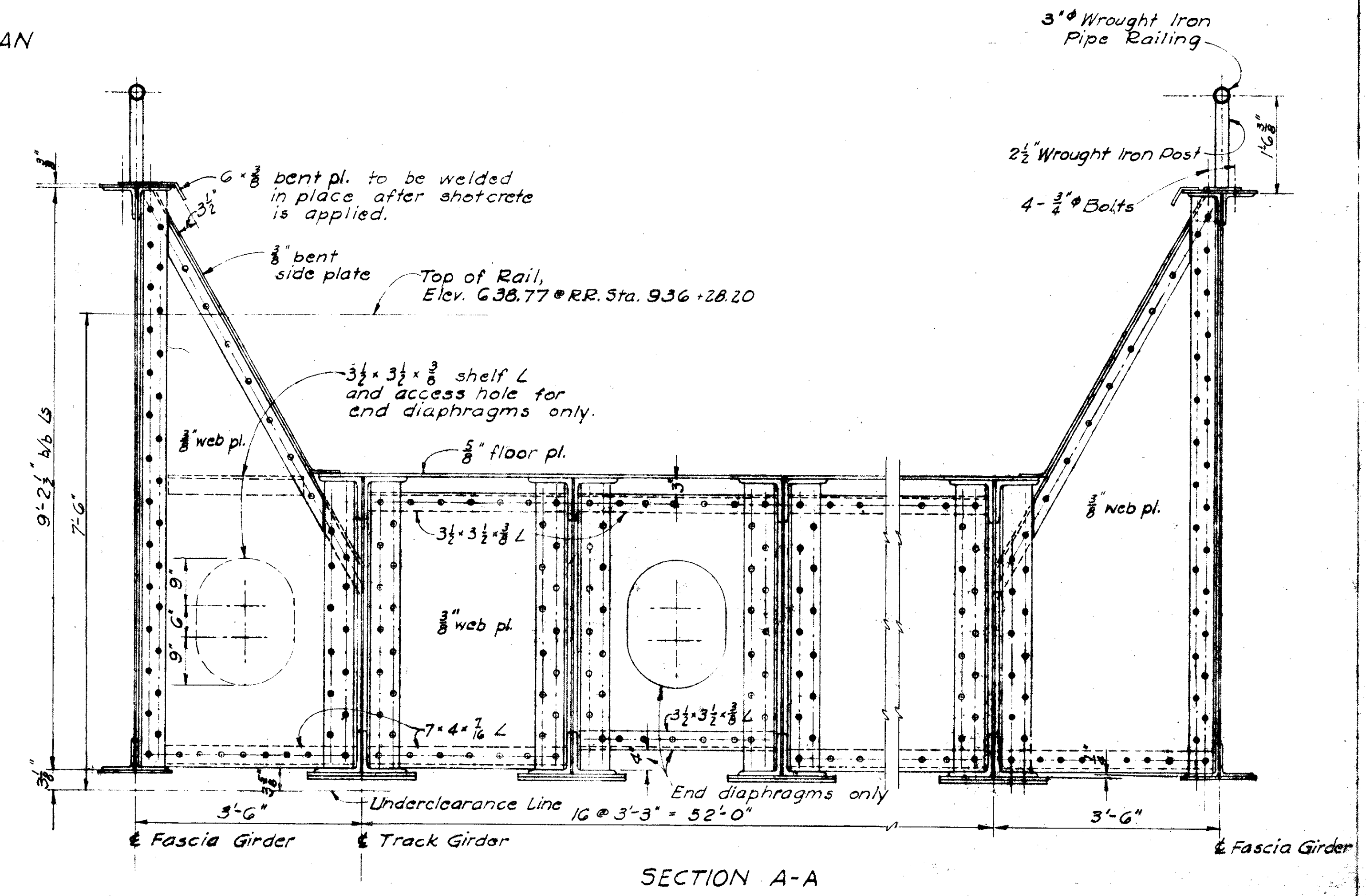


LAK-640-2.56

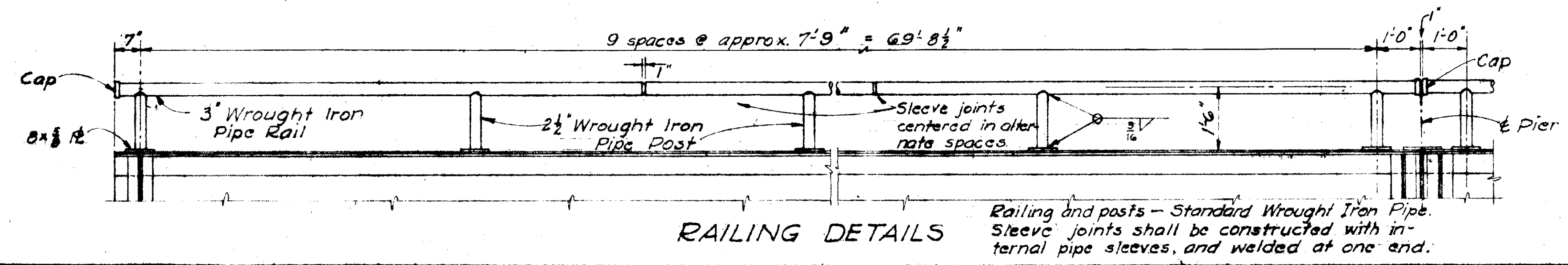


HALF STEEL FRAMING PLAN

DESIGN DATA			
LOADING: COOPER'S E-72		SPECIFICATIONS: AREA 1958	
DESIGN SPAN: 70.33'		TRACK GIRDER SPACING: 3.25'	
DEAD LOAD			
Track & Ballast	570	DL.	779
Waterproofing & Protection	20.5	L.L.	1546
Steel	485	IMR	894
TOTAL PER GIRDER	1260¹/₂		
GIRDER PROPERTIES		STRESSES	
Gross I	77,883 in ⁴	ACTUAL	ALLOWABLE
Net I	67,456 in ⁴	Flange Tension	16,664 %
Gross S.M.	2,683 in ³	Flange Compression	14,397 %
Net S.M.	2,318 in ³	Web Shear	7,214 %
			11,000 %
SPAN RATIO: 15			



SECTION A-A



STATE OF OHIO
DEPARTMENT OF HIGHWAYS
DIVISION OF DESIGN AND CONSTRUCTION
BUREAU OF BRIDGES

13

SUPERSTRUCTURE DETAILS

BRIDGE No. LAK-640-0282
NYCRR OVER SR 640
LAKE COUNTY

DESIGNED	DRAWN	TRACED	CHECKED	REVIEWED	DATE	REVISED
CPD	CPD		WPK	BPG	8-3-59	