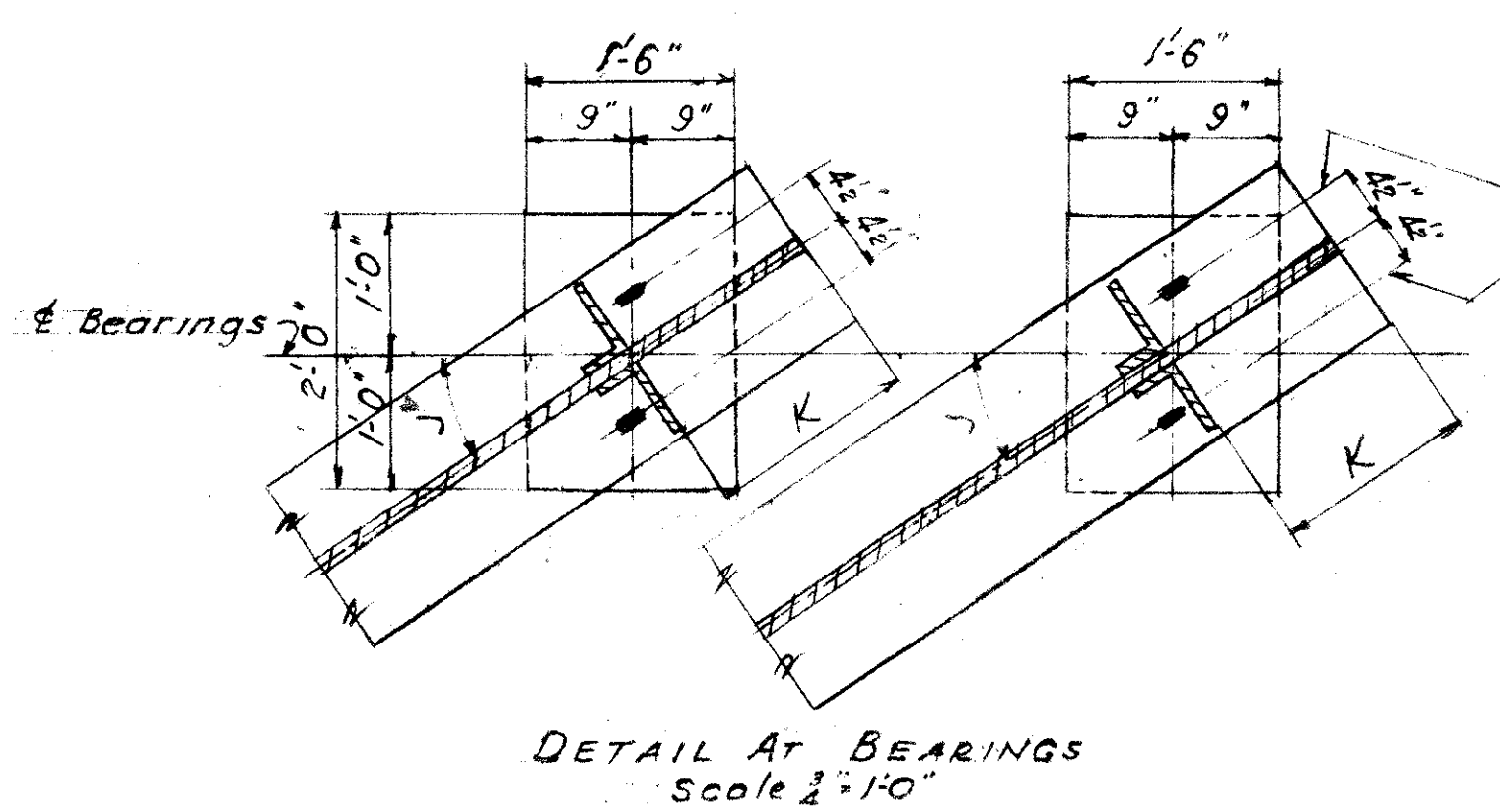
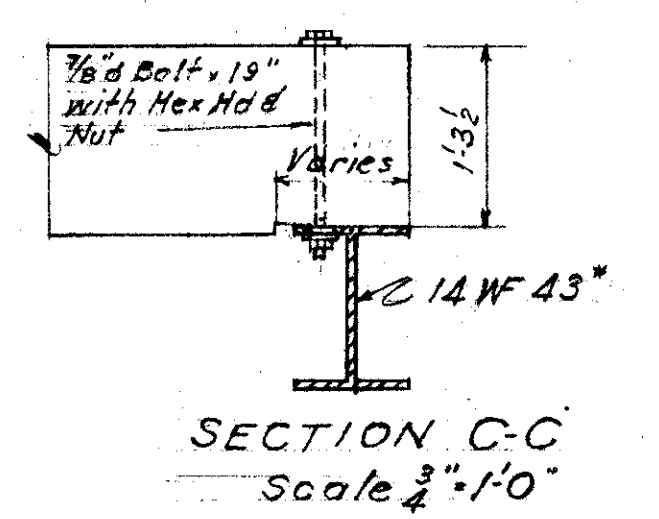
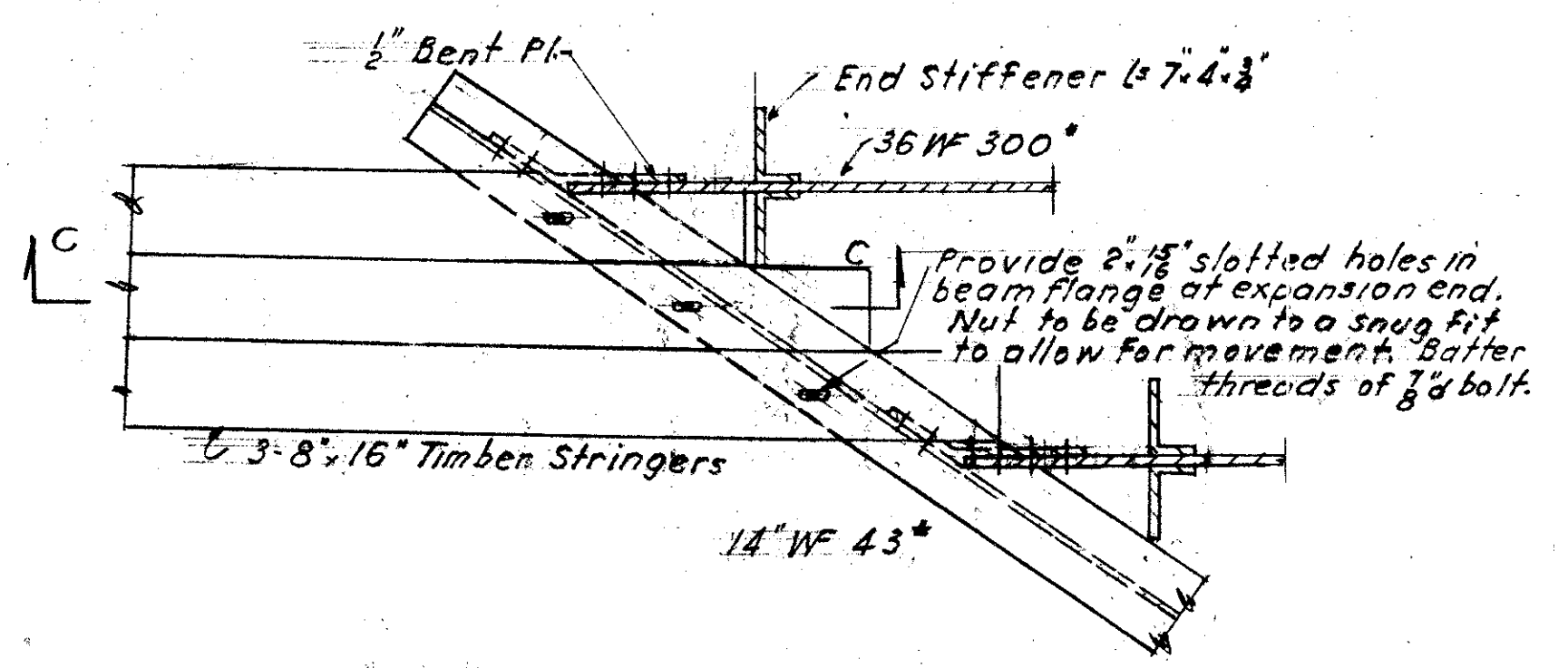
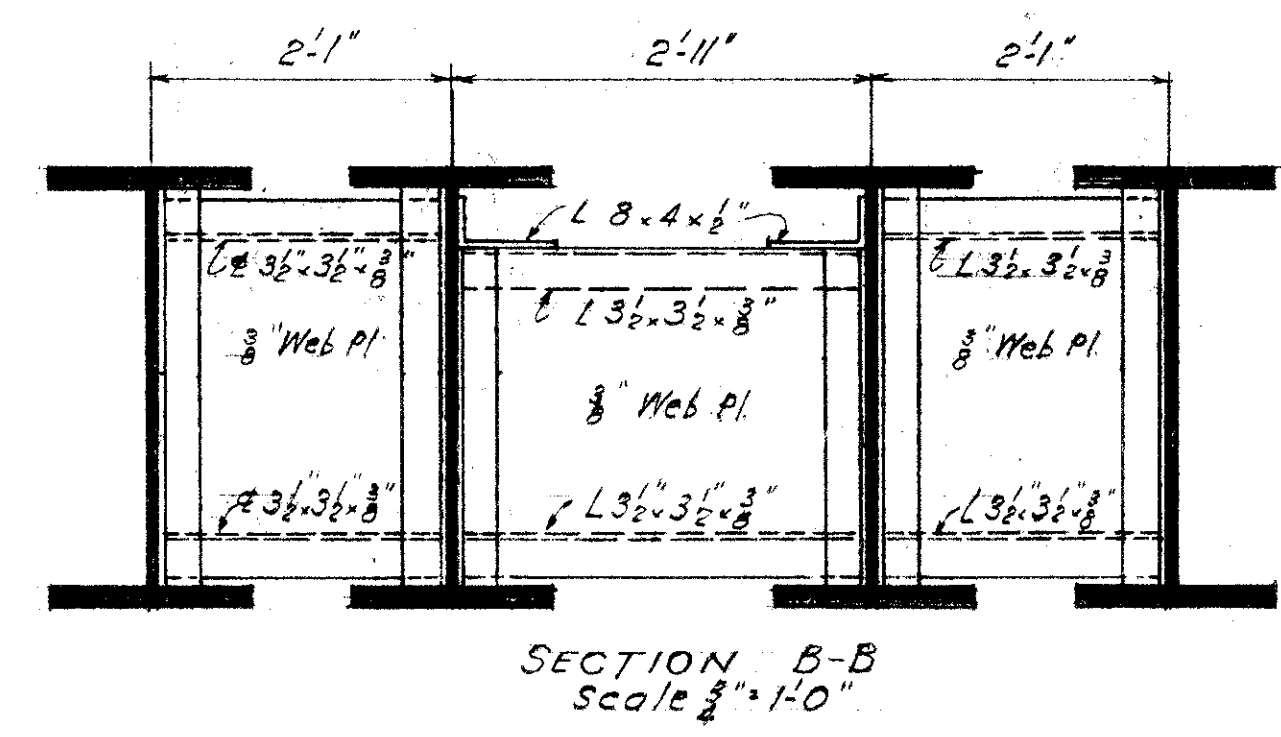
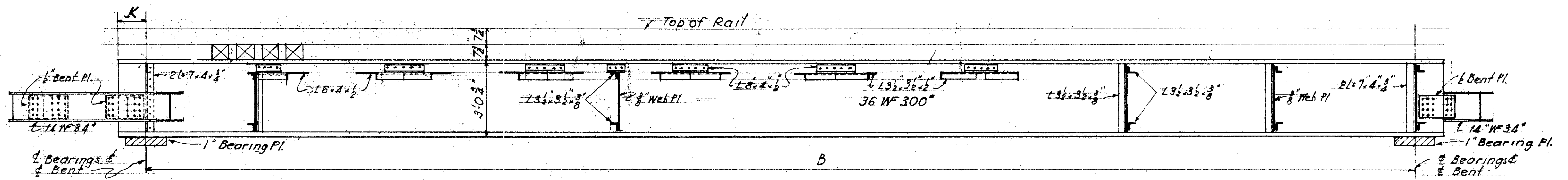
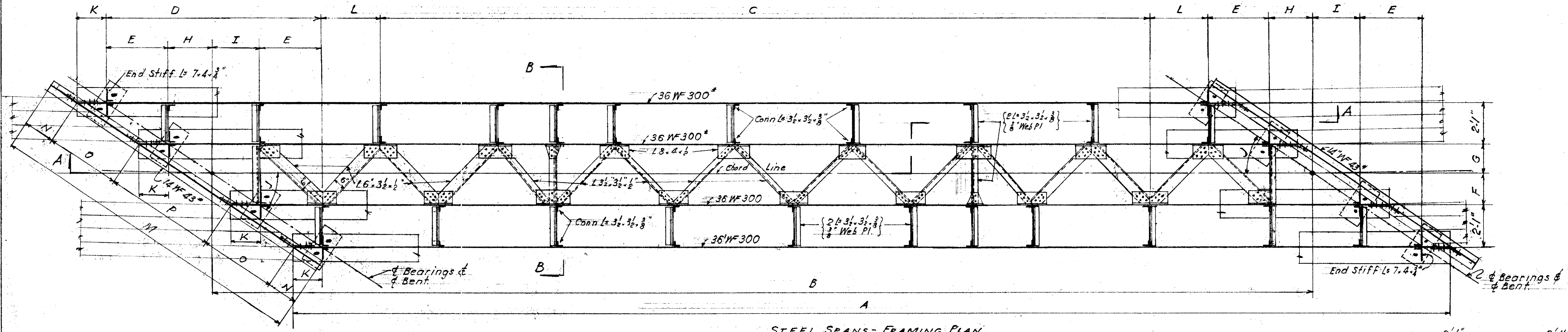


LAK-640-2.56



2 1/2\"/>

STRUCTURAL STEEL NOTES

State of Ohio Department of Highways.  
Supplemental Specifications No S-107 revised February 18, 1955, and No S-207 dated April 28, 1955.  
Rivets 3/4\"/>

LOCATION	A LENGTH o. to o.	B C to C Bearings	C	D	E	F	G	H	I	ANGLE J	K	L	M	N	O	P	BEARING PLATE
Bent 6-Bent 7-Track 30	56'-8"	53'-10 3/4"	13'-2 1/8"	10'-5 1/8"	3'-1 1/8"	1'-5 1/8"	1'-4 1/8"	2'-1 1/8"	2'-2 1/8"	33° 50' 42"	1'-5"	2'-10 3/8"	15'-9"	1'-6 1/8"	3'-8 3/8"	5'-2 3/8"	18" x 1" x 2'-0"
Bent 6-Bent 7-Track #1	56'-8"	53'-5 1/2"	13'-2 1/8"	10'-5 1/8"	3'-0 3/8"	1'-6 1/8"	1'-4 1/8"	2'-1 1/8"	2'-2 1/8"	34° 08' 04"	1'-7 1/4"	2'-10 3/8"	15'-9"	1'-6 1/8"	3'-8 3/8"	5'-2 3/8"	18" x 1" x 2'-0"
Bent 6-Bent 7-Track #2	56'-8"	53'-0 3/8"	13'-2 1/8"	10'-4 1/8"	3'-0 1/8"	1'-6 1/8"	1'-4 1/8"	2'-0 1/8"	2'-2 3/8"	34° 25' 13"	1'-9 3/8"	2'-9 3/8"	15'-9"	1'-7 1/4"	3'-8 3/8"	5'-2"	18" x 1" x 2'-0"
Bent 14-Bent 15-Track 30	52'-3"	49'-6 1/2"	13'-2 7/8"	9'-9 3/8"	2'-10 3/8"	1'-6"	1'-5"	1'-11 1/4"	2'-0 1/8"	35° 49' 48"	1'-4 1/4"	2'-7 3/4"	15'-2"	1'-6 1/8"	3'-6 1/8"	4'-11 1/2"	18" x 1" x 2'-0"
Bent 14-Bent 15-Track #1	52'-3"	49'-2 3/8"	13'-2 7/8"	9'-8 3/8"	2'-10 1/8"	1'-6"	1'-5"	1'-11 1/4"	2'-0 1/8"	36° 05' 58"	1'-6 3/8"	2'-7 3/8"	15'-2"	1'-6 1/8"	3'-6 1/8"	4'-11 1/8"	18" x 1" x 2'-0"
Bent 14-Bent 15-Track #2	52'-3"	48'-10 1/8"	13'-2 7/8"	9'-7 7/8"	2'-9 1/8"	1'-6"	1'-5"	1'-11 1/4"	2'-0 1/8"	36° 21' 54"	1'-8"	2'-7"	15'-2"	1'-7 5/8"	3'-6 1/8"	4'-11"	18" x 1" x 2'-0"

Correct  
*J. L. Beckel*  
 Engineer of Structures  
*Geo. C. Hoffman*  
 Assistant Chief Engineer  
 Approved: *C. E. O'Keefe*  
 Chief Engineer

Date	By	Description
10-16-59	JVP	Minor Revisions

Highway Bridge No. LAK-640-0282  
 N.Y.C. SYSTEM OFFICE OF CHIEF ENGINEER NEW YORK, N.Y.  
 BR #56 1/2 ERIE  
 GRADE SEPARATION  
 VINE STREET  
 WILLOUGHBY, OHIO  
 TEMPORARY TRESTLES-STEEL DETAILS  
 Western District Lake Division Sheet 5 of 7  
 Scale: As Shown Sept. 3, 1959 Vol. Sec. 203 File No. 93207