

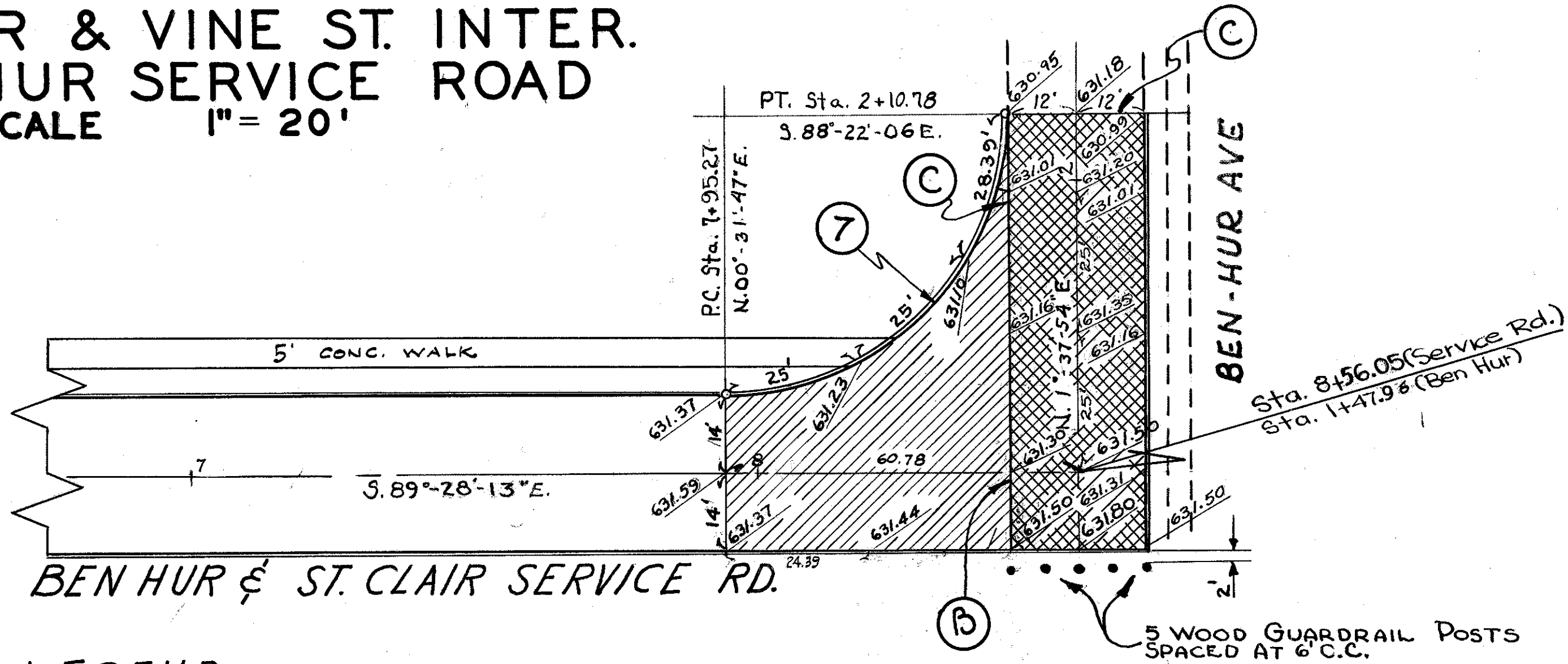
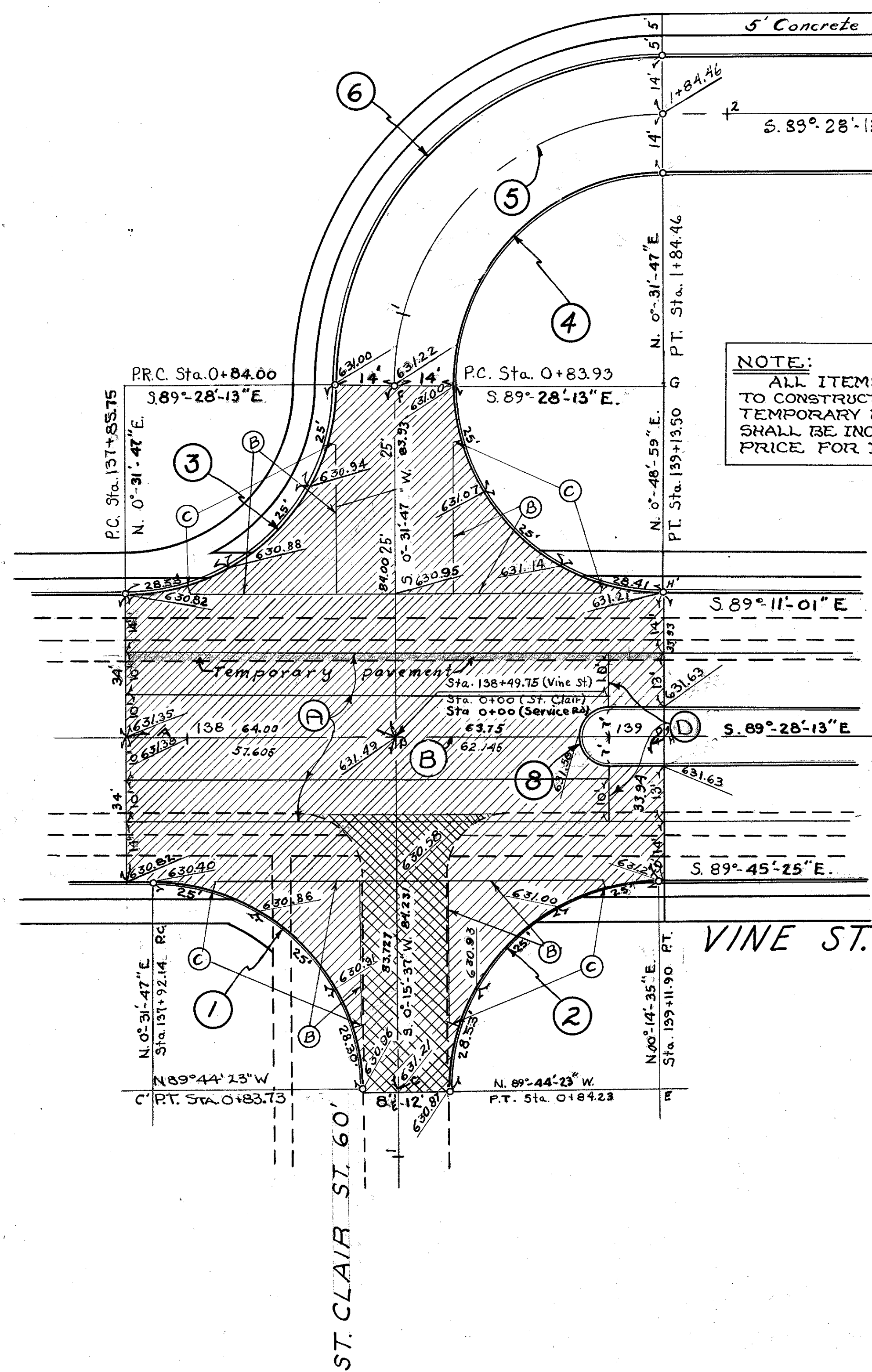
EXTRA AREA DETAIL

ST. CLAIR & VINE ST. INTER. BEN-HUR SERVICE ROAD

SCALE 1" = 20'

LAKE COUNTY
SEC. LAK. - 640-2.56

NOTE:
All Elevations Are To The Top of Finished Pavement



- LEGEND**
- (A) Standard Longitudinal Joint
 - (B) Standard Key Joint without Tie Bars
 - (C) Expansion Joint without Dowels
 - (D) Standard Expansion Joint with Dowels
- New Pavement
 - New Pavement & Pavement Removal
 - Class "13" Temporary Asphaltic Concrete Pavement, As Per Sec. 5-15.06

NOTE:
ALL ITEMS THAT ARE NEEDED TO CONSTRUCT AND REMOVE TEMPORARY PAVEMENT, AS PER PLAN, SHALL BE INCLUDED IN THE LUMP SUM PRICE FOR ITEM S-15.

- | | | |
|---|---|--|
| <p>①</p> <p>$R = 50.00'$
$\Delta = 89^\circ-43'-50''$
$T = 49.77'$
$L = 78.30'$
$Ch = 70.54'$</p> | <p>②</p> <p>$R = 50.00'$
$\Delta = 89^\circ-58'-58''$
$T = 50.00'$
$L = 78.53'$
$Ch = 70.71'$</p> | <p>③</p> <p>$R = 50.00'$
$\Delta = 90^\circ-00'-00''$
$T = 50.00'$
$L = 78.54'$
$Ch = 70.70'$</p> |
| <p>④</p> <p>$R = 50.00'$
$\Delta = 179^\circ-42'-48''$
$T = 50.00'$
$L = 156.83'$
$Ch = 100.00'$</p> | <p>⑤</p> <p>$R = 64.00'$
$\Delta = 90^\circ-00'-00''$
$T = 64.00'$
$L = 100.53'$
$Ch = 90.51'$</p> | <p>⑥</p> <p>$R = 78.00'$
$\Delta = 90^\circ-00'-00''$
$T = 78.00'$
$L = 122.52'$
$Ch = 110.31'$</p> |
| | <p>⑦</p> <p>$R = 50.00'$
$\Delta = 88^\circ-53'-53''$
$T = 49.05'$
$L = 77.58'$
$Ch = 70.03'$</p> | <p>⑧</p> <p>$R = 7.00'$
$\Delta = 180^\circ$
$L = 21.99'$</p> |

LOCATION	T-7/1 Reint. Concrete Pavement		I-22 Subbase		I-21 4" Port Cement Concrete Median	I-12 STD. CONC. CURB TYPE 2-A	I-11 Sandstone Curb 1" Bullnose 6"x18" Straight	I-15 Wood Guard Rail Posts w/ Rail	E-8 Removal and Disposal of Exst. Curb	E-8 Removal and Disposal of Exst. Pavement	
	Sq. Yds.	Sq. Yds.	Cu. Yds.	Cu. Yds.	Sq. Yds.	Lin. Ft.	Lin. Ft.	Lin. Ft.	Lin. Ft.	Sq. Yds.	
Sta. 135+85.75 to Sta. 139+13.50	1384		230.7				6.39				
Sta. 139+93 to Sta. 139+13.50			12.3		29.6	48.99					
Sta. 7+95.27 to Sta. 8+68.05		459.9		76.6							
Sta. 137+92.14 VINE to Sta. 0+83.73 ST. CLAIR						78.30					
Sta. 137+85.75 VINE to Sta. 0+84.00 ST. CLAIR						78.54					
Sta. 0+84.23 ST. CLAIR to Sta. 139+11.90 VINE						78.53					
Sta. 0+83.93 ST. CLAIR to Sta. 139+11.90 VINE						78.41					
Sta. 7+95.27 ST. CLAIR Serv. to Sta. 2+10.78 BEN HUR						77.58					
Sta. 7+95.27 ST. CLAIR Serv. to Sta. 8+68.05 ST. CLAIR Serv.						72.78					
Sta. 0+18 ST. CLAIR Ave. to Sta. 0+84.23 ST. CLAIR Ave.										160	
Sta. 1+33.96 Ben Hur to Sta. 2+10.78 Ben Hur						76.82			78.0	205	
Sta. 8+44.05 ST. CLAIR Serv. to Sta. 8+68.05								5			
TOTALS	1384	459.9	243.0	76.6	29.6	48.99	320.7	227.8	5	78.0	365