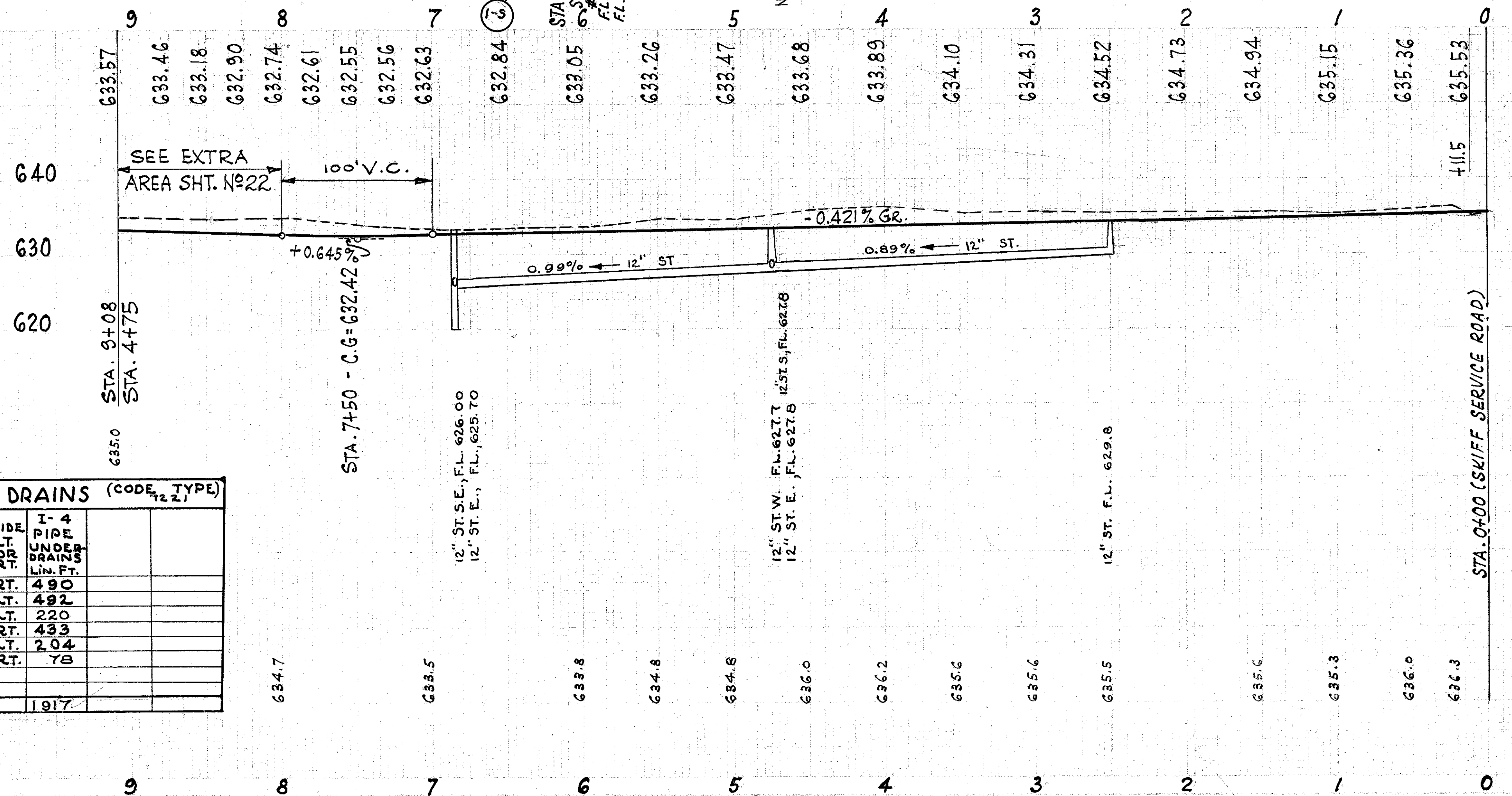
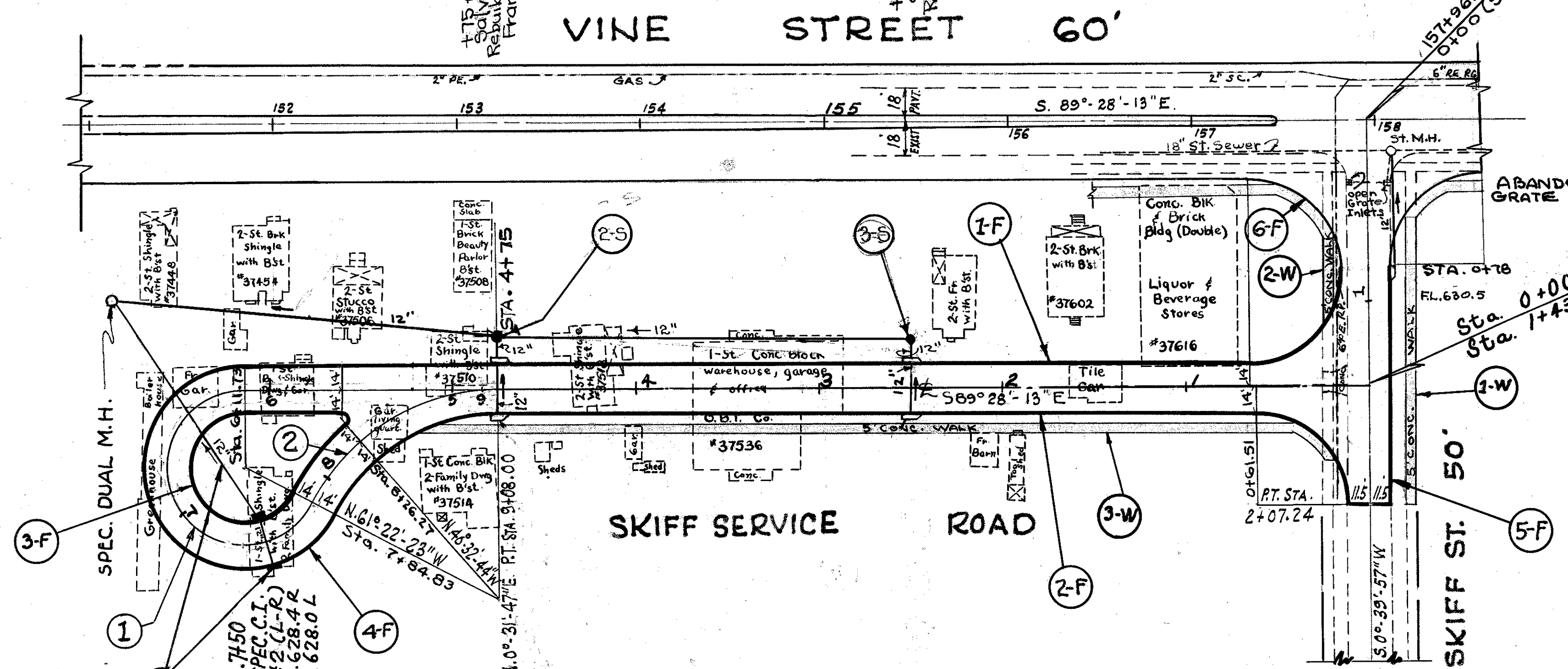
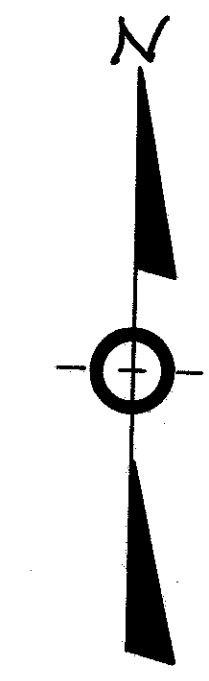


SKIFF SERVICE ROAD
CURVE DATA

①	②
R=41.00'	R=114.00'
Δ=241°54'10"	Δ=61°54'10"
T=68.37'	T=68.37'
L=173.10'	L=123.17'
Ch=70.37'	Ch=117.26'

B.M. # 6 - S.E. Cor. of Cap Bolt of fire Hydrant
 21' R of E Vine St. - Sta. 153+04 - Elev. 635.085

LAKE COUNTY
SEC. LAK.-640-2.56



UG-1090(I) 6" UNDER DRAINS (CODE TYPE 72.1)

REF. NO.	STATION FROM	STATION TO	SIDE	I-4 PIPE UNDER DRAINS LIN. FT.
1-F	0+79.24	4+75	RT.	490
2-F	2+07.24	4+75	LT.	492
3-F	5+60.41	8+26.11	LT.	220
4-F	4+75	9+08.0	RT.	433
5-F	18+15.89	2+07.24	LT.	204
6-F	0+79.24	5+31.31	RT.	78
TOTALS				1917

UG-109D(I) SIDEWALK (CODE TYPE 72.1)

Ref. No	Station		Side	ITEM E-8		ITEM I-13	
	From	To		Removal & Disposal of Exist. Walk	4" Portland Cement Conc. Walk	Width	Sq. Ft.
1-W	0+55	2+07.24	L.T.	608.36	5	760.00	
2-W	0+65	2+07.24	RT.	710.45	5	225.00	
3-W	0+20	5+10	LT.			2490.00	
TOTALS				1318.81		3475.00	

UG-1090(I) STORM SEWERS (CODE TYPE 72.1)

REF. NO.	STATION		SIDE	I-2 LIN. FT.		I-8 INLETS Standard #1		I-8 SPEC. C.I. Inlets		I-16 INLETS Abandoned	
	FROM	TO		CLASS "B" 12" UNDER PAVT.	ABANDONED	Each	Each	Each	Each	Each	Each
1-5	7+50	15+15 (Vine St.)	RT.	115	52			1	1		1
2-5	4+75		RT.					1	1		1
3-5	2+50		RT.					1	1		1
	SKIFF ST.	0+35	LT.			2					
TOTALS				115	52	2		2	2		2

PLAN & PROFILE - SKIFF ST. SERVICE RD. - STA. 0+00 TO STA. 9+20.56