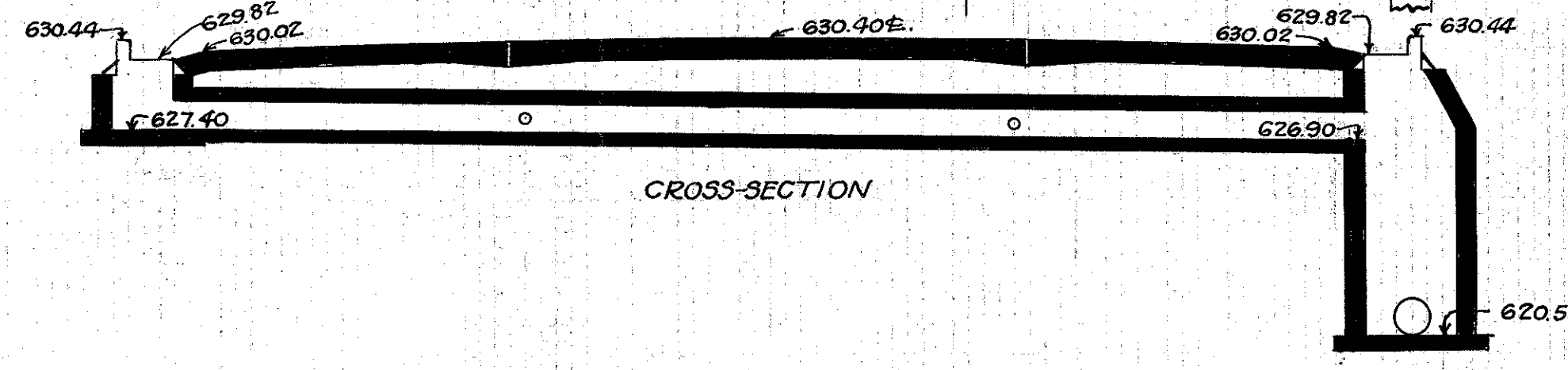
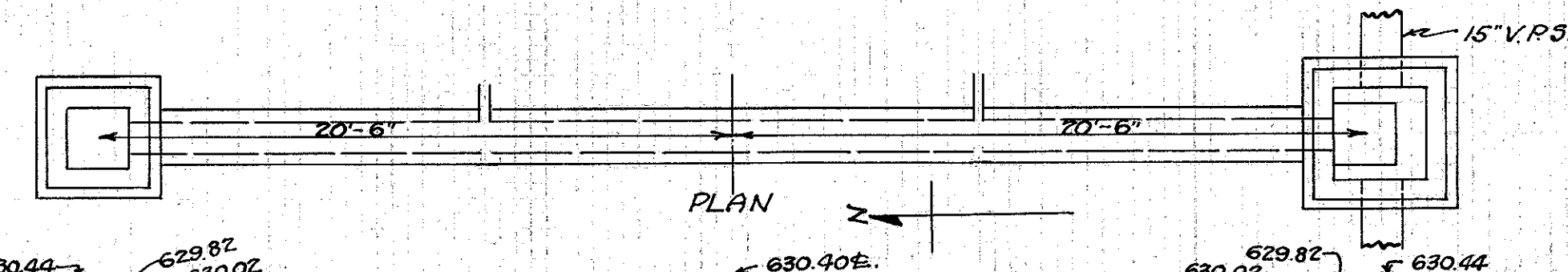


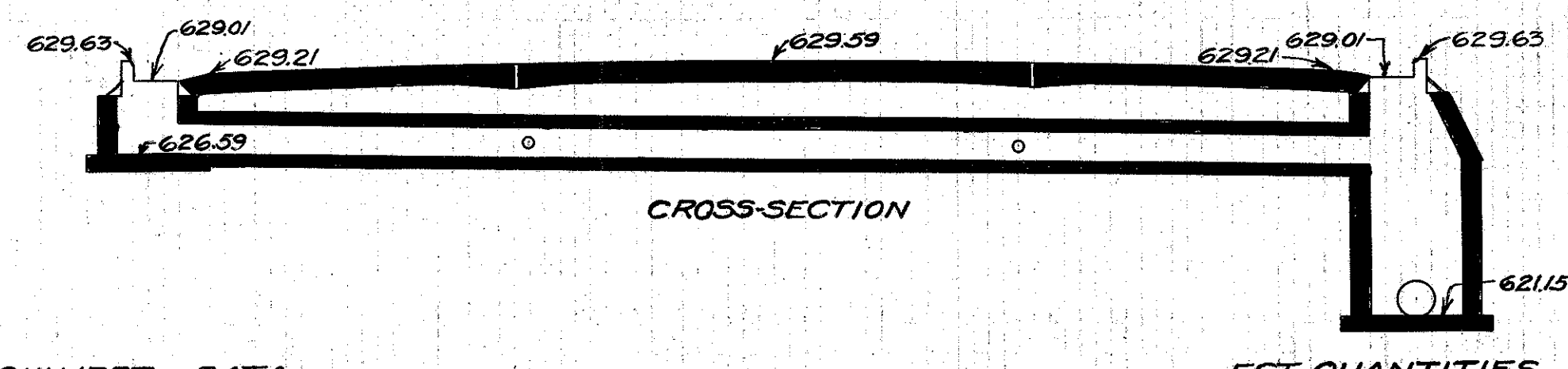
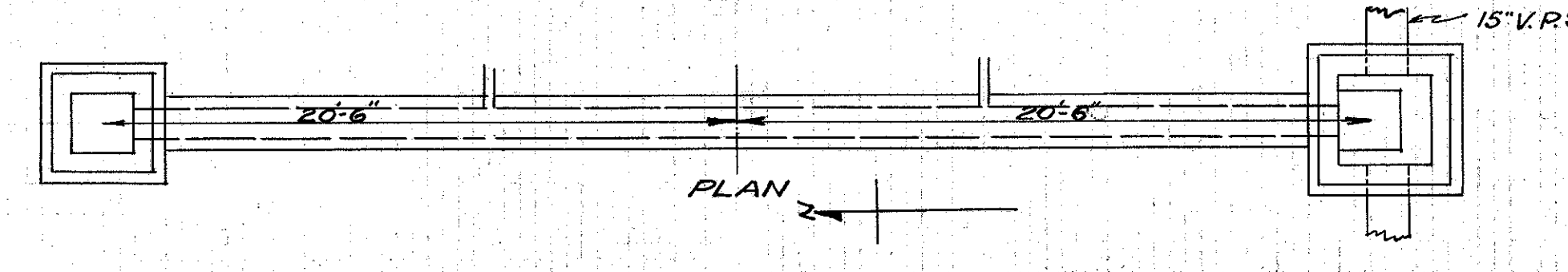
**CULVERT DATA**  
 Type: Std. V.P. enc. culvert Dr. #300  
 Size: 12' x 40'  
 Work Req.: Build 12' x 40' Std. V.P. enc. culvert with I.B. on L. & Inlet M.H. on R. Place 12' x 4' vit Ts 8' R+L of  $\pm$ .  
 Drawn by: Plummer  
 Date: 3/2/32

**EST. QUANTITIES**  
 Exc. 70 Cu.Yds.  
 12' V.P. enc. 36 Lin. ft.  
 12' x 4' Vit T enc. 2  
 I.B. comp. 1 (Rdw. Quant.)  
 Inlet M.H. 1 (Rdw. Quant.)  
 Sta. 136+0



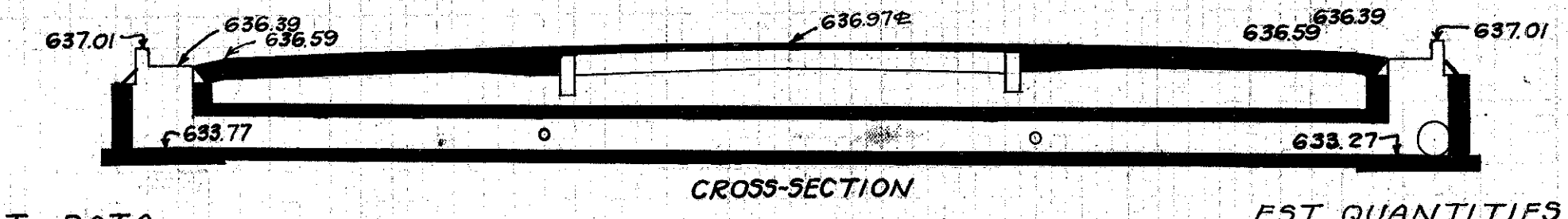
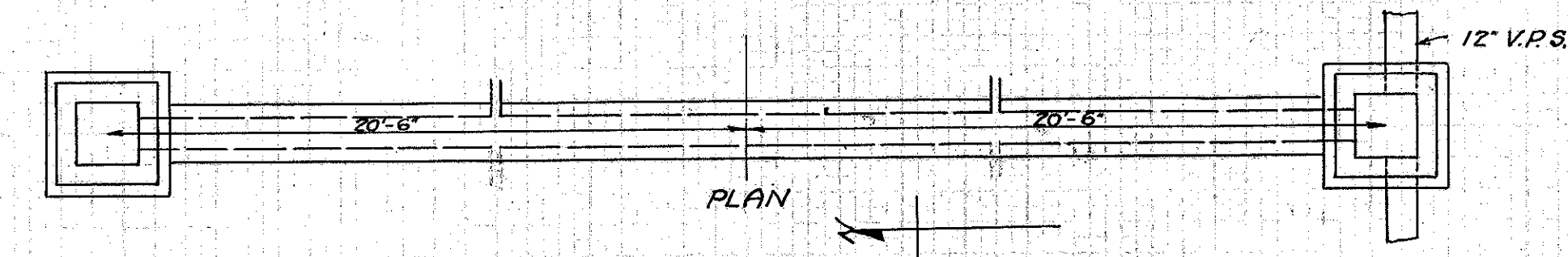
**CULVERT DATA**  
 Type: Std. V.P. enc. culvert Dr. #300  
 Size: 12' x 40'  
 Work Req.: Build 12' x 40' Std. V.P. enc. culvert with I.B. on L. & Inlet M.H. on R. Place 12' x 4' Vit. Ts 8' R+L of  $\pm$ .  
 Drawn by: Plummer  
 Date: 3/2/32

**EST. QUANTITIES**  
 Exc. 7.8 Cu.Yds.  
 12' V.P. enc. 36 Lin. ft.  
 12' x 4' Vit. Ts enc. 2  
 I.B. comp. 1 (Rdw. Quant.)  
 Inlet M.H. 1 (Rdw. Quant.)  
 Sta. 133+0



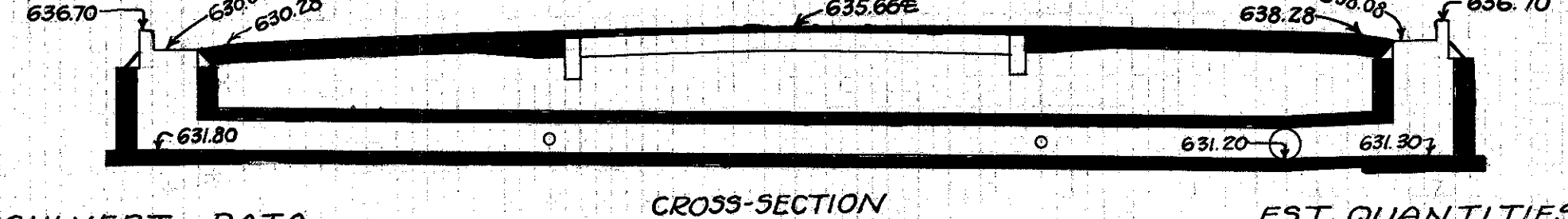
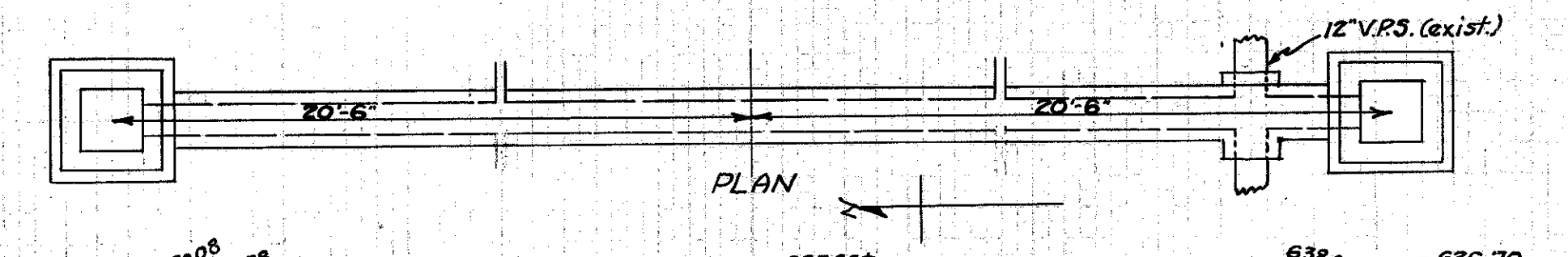
**CULVERT DATA**  
 Type: Std. V.P. enc. culvert Dr. #300  
 Size: 12' x 40'  
 Work Req.: Build 12' x 40' Std. V.P. enc. culvert with I.B. on L. & Inlet M.H. on R. Place 12' x 4' Vit Ts 8' R+L of  $\pm$ .  
 Drawn by: Plummer  
 Date: 3/2/32

**EST. QUANTITIES**  
 Exc. 7.4 Cu.Yds.  
 12' V.P. enc. 36 Lin. Ft.  
 12' x 4' Vit. Ts enc. 2  
 I.B. comp. 1 (Rdw. Quant.)  
 Inlet M.H. 1 (Rdw. Quant.)  
 Sta. 130+0



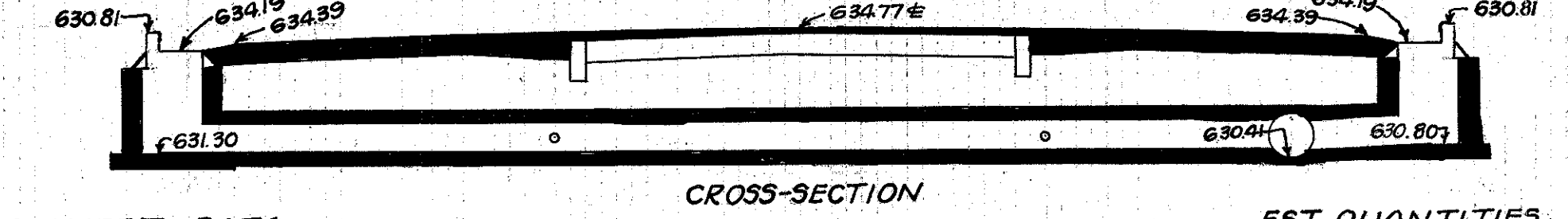
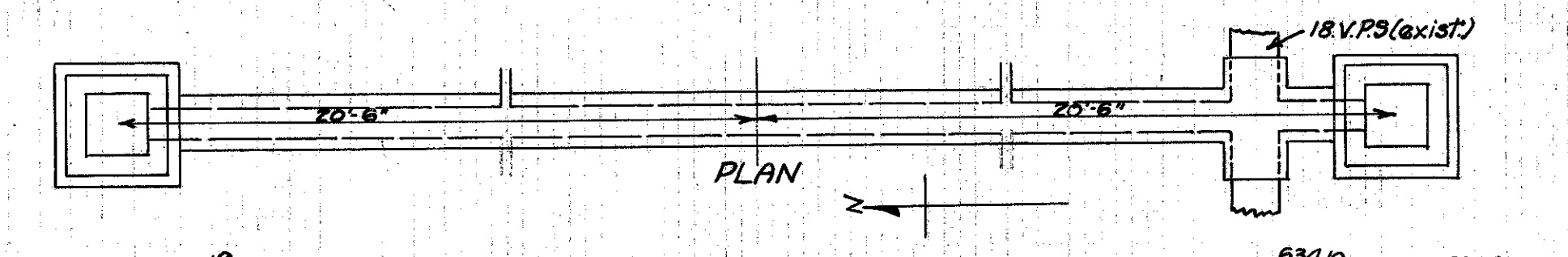
**CULVERT DATA**  
 Type: Std. V.P. enc. culvert Dr. #300  
 Size: 12' x 40'  
 Work Req.: Build 12' x 40' Std. V.P. enc. culvert with I.B. on R+L. Place 12' x 4' Vit Tee 8' R+L of  $\pm$ .  
 Drawn by: Plummer  
 Date: 3/3/32

**EST. QUANTITIES**  
 Exc. 10.0 Cu.Yds.  
 12' V.P. enc. 36 Lin. ft.  
 12' x 4' Vit T enc. 2  
 I.B.s comp. 2 (Rdw. Quant.)  
 Sta. 161+0



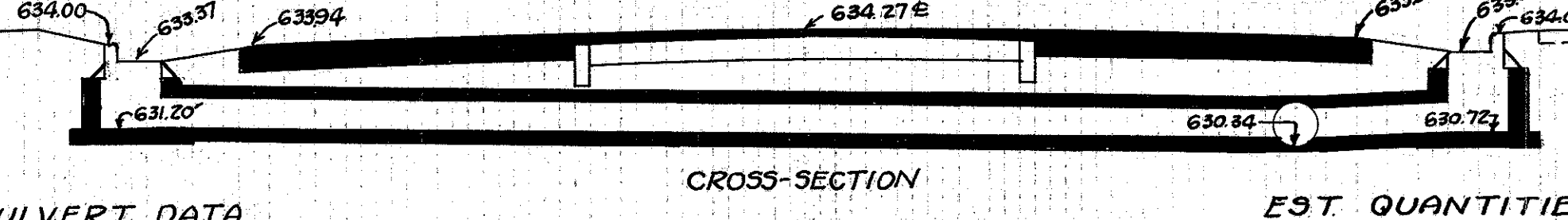
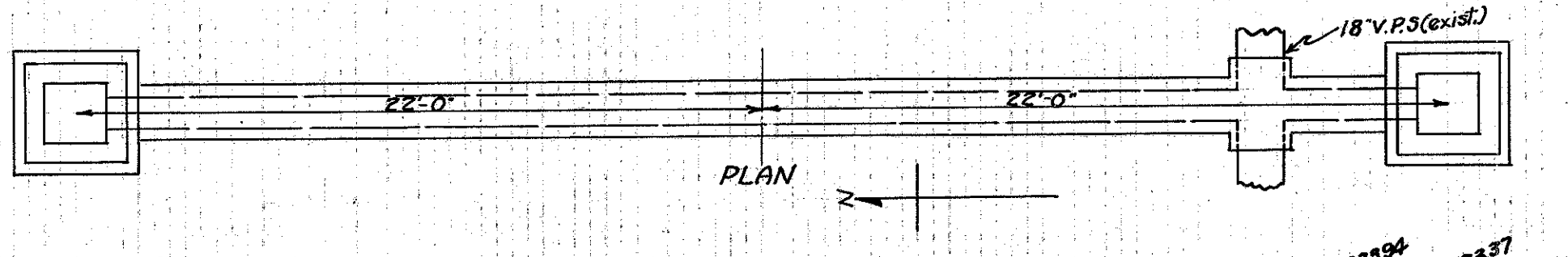
**CULVERT DATA**  
 Type: Std. V.P. enc. culvert Dr. #300  
 Size: 12' x 40'  
 Work Req.: Build 12' x 40' Std. V.P. enc. culvert with I.B. on R+L + connect to existing 12' V.P.S. with 12' x 12' Vit double T. Place 12' x 4' Vit T 8' R+L of  $\pm$ .  
 Drawn by: Plummer  
 Date: 3/3/32

**EST. QUANTITIES**  
 Exc. 9.6 Cu.Yds.  
 12' V.P. enc. 36 Lin. ft.  
 12' x 4' Vit T enc. 2  
 12' x 12' Vit double T enc. 1  
 I.B.s. Comp. 2 (Rdw. Quant.)  
 Sta. 158+38



**CULVERT DATA**  
 Type: Std. V.P. enc. culvert Dr. #300  
 Size: 12' x 40'  
 Work Req.: Build 12' x 40' Std. V.P. enc. culvert with I.B. on R+L. Place 12' x 4' Vit T 8' R+L of  $\pm$  and connect to exist. 18' V.P.S. with 18' x 12' Vit double T.  
 Drawn by: Plummer  
 Date: 3/3/32

**EST. QUANTITIES**  
 Exc. 12.0 Cu.Yds.  
 12' V.P. enc. 36 Lin. ft.  
 12' x 4' Vit T enc. 2  
 18' x 12' Vit double T enc. 1  
 I.B.s. comp. 2 (Rdw. Quant.)  
 Sta. 156+0



**CULVERT DATA**  
 Type: Std. V.P. enc. culvert Dr. #300  
 Size: 12' x 42'  
 Work Req.: Build 12' x 42' Std. V.P. enc. culvert with I.B. on R+L. Connect to exist. 18' V.P.S. 16' R of  $\pm$  with 18' x 12' Vit Double T.  
 Drawn by: Plummer  
 Date: 3/3/32

**EST. QUANTITIES**  
 Exc. 9.0 Cu.Yds.  
 12' V.P. enc. 42 Lin. ft.  
 I.B.s. comp. 2 (Rdw. Quant.)  
 18' x 12' Vit double T (rdw.)  
 Sta. 154+0