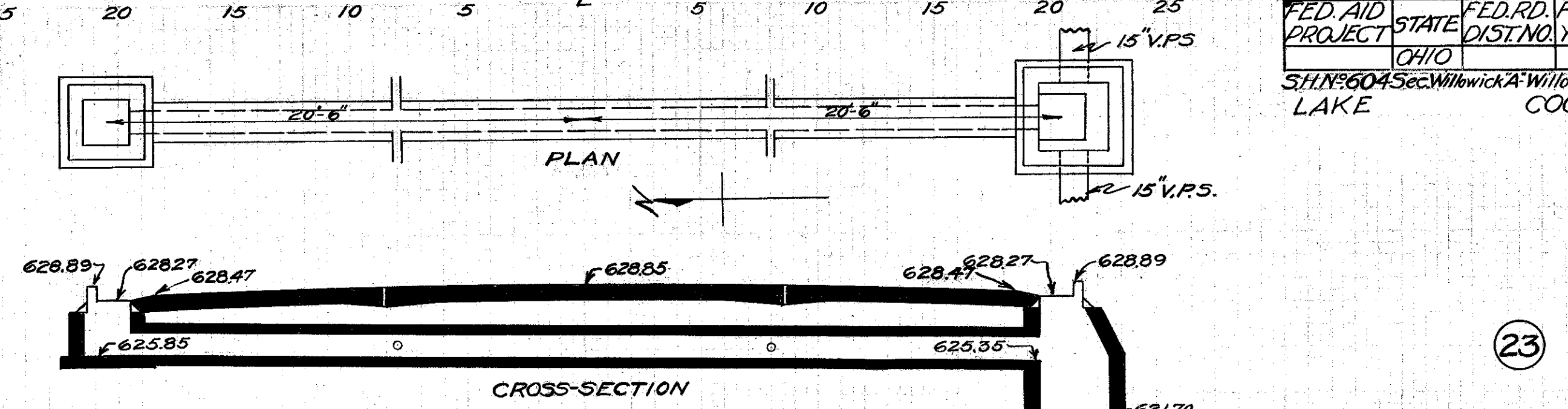


**CULVERT DATA**  
 Type: Std. V.P. enc. culvert Dr. #300  
 Size: 12"x40'  
 Work Req. Build 12"x40' Std. V.P. enc. culvert with I.B. on L. & Inlet M.H. on R. Place 12"x4" Vit. double Ts 8' R&L. of  $\Phi$ .  
 Drawn by Plummer  
 Date 3/1/32

**EST. QUANTITIES**  
 Exc. 7.8 Cu. Yds.  
 12" V.P. enc. 36 Lin. Ft.  
 12"x4" Vit. double Ts enc. 2  
 I.B.s Complete 1 } (Rdw. Quant.)  
 Inlet M.H.  
 Sta. 116+0

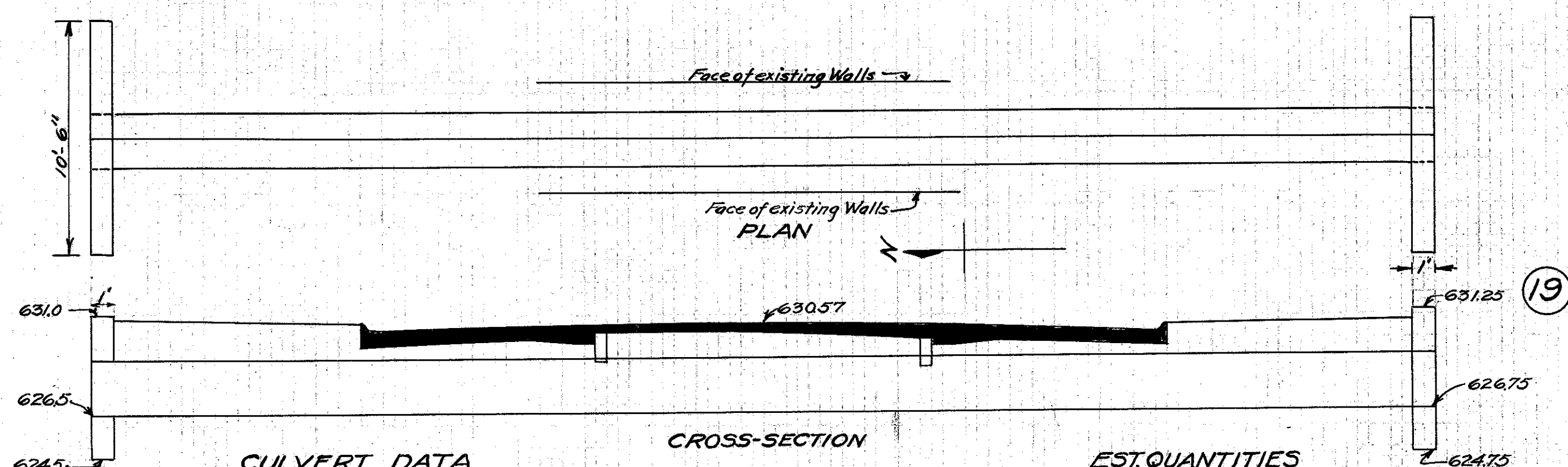
Checked by \_\_\_\_\_  
 Date \_\_\_\_\_  
 Div'n. Engr. \_\_\_\_\_



**CULVERT DATA**  
 Type: Std. V.P. enc. culvert Dr. #300  
 Size: 12"x40'  
 Work Req. Build 12"x40' Std. V.P. enc. culvert with I.B. on L. and Inlet M.H. on R. Place 12"x4" Vit. double Ts 8' R&L. of  $\Phi$ .  
 Drawn by Plummer  
 Date 3/2/32

**EST. QUANTITIES**  
 Exc. 7.8 Cu. Yds.  
 12" V.P. enc. 36 Lin. Ft.  
 12"x4" Vit. double Ts enc. 2  
 I.B.s Complete 1 } (Rdw. Quant.)  
 Inlet M.H. Complete  
 Sta. 127+25

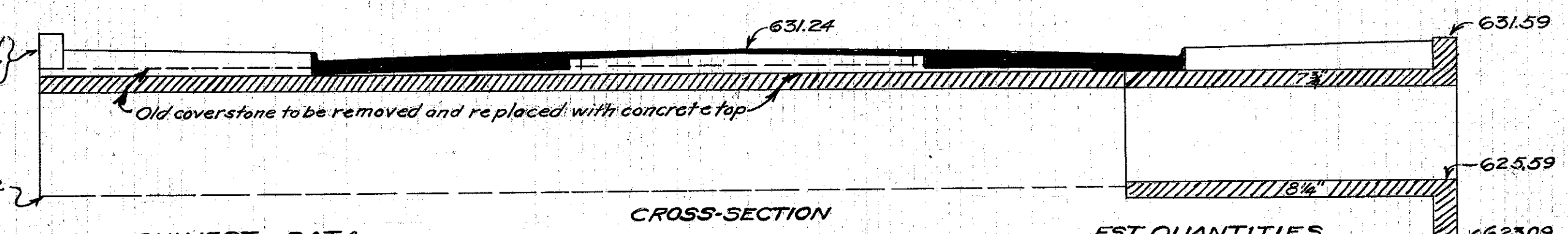
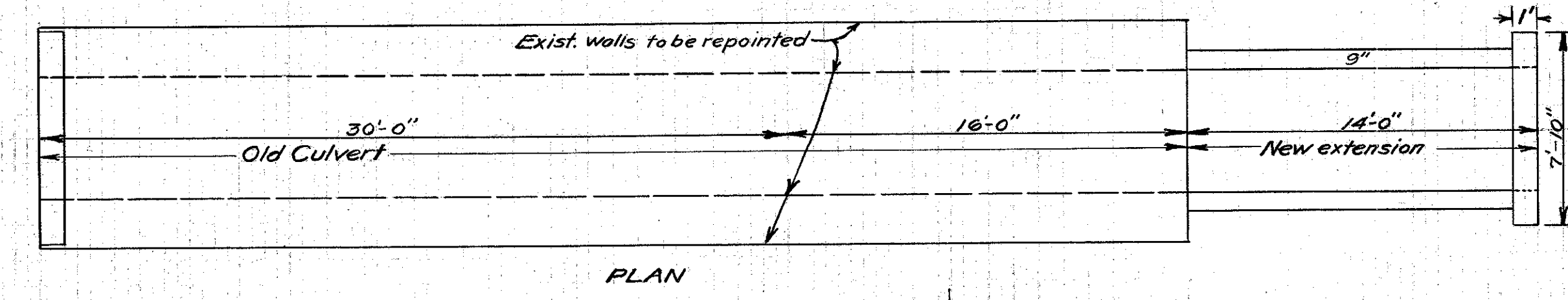
Checked by \_\_\_\_\_  
 Date \_\_\_\_\_  
 Div'n. Engr. \_\_\_\_\_



**CULVERT DATA**  
 Type: Std. Reinforced Concrete Pipe Culvert  
 Size: 30"x60'  
 Work Req. Remove existing cover stone and parapets, build 36"x60" R.C.P. culvert between existing walls of present culvert, H.W. R&L. Clean outlet 100' N. of  $\Phi$ .  
 Drawn by Plummer  
 Date 3/1/32

**EST. QUANTITIES**  
 Exc. 7.0 Cu. Yds.  
 30" R.C.P. for V.S. enc. 60 Lin. Ft.  
 Con. 1-5/2 4.6 Cu. Yds.  
 Reinf. Steel 125 Lbs.  
 Stone Mas. Removed 10 Cu. Yds.  
 Sta. 113+41

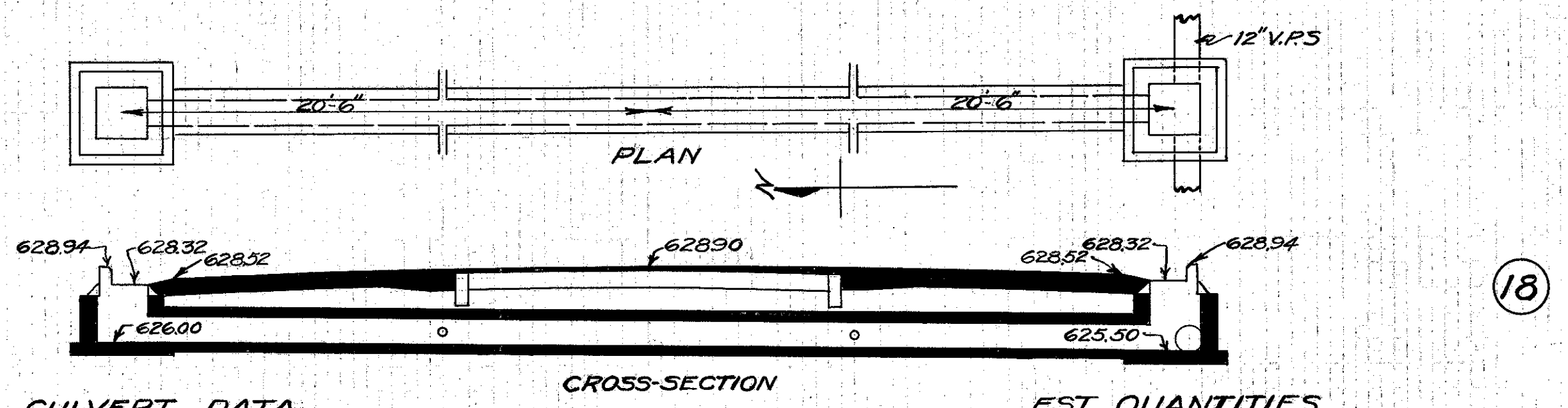
Checked by \_\_\_\_\_  
 Date \_\_\_\_\_  
 Div'n. Engr. \_\_\_\_\_



**CULVERT DATA**  
 Type: Std. 5'x4' Conc. Box Culvert Dr. B-C-A  
 Size: 5'x4' x 14'  
 Work Req. Extend exist. 5'x4' Stone box 14' to R. with Std. 5'x4' box culv. Dr. B-C-A omitting wing walls. Remove existing cover stone and replace with concrete top B-C-A. Repoint old walls.  
 Drawn by Plummer  
 Date 3/2/32

**EST. QUANTITIES**  
 Exc. 220 Cu. Yds.  
 Stone Masonry Rem. 15.0 "  
 Con. 1-5/2 16.0 "  
 Reinf. Steel 8570 Lbs.  
 Sta. 123+21

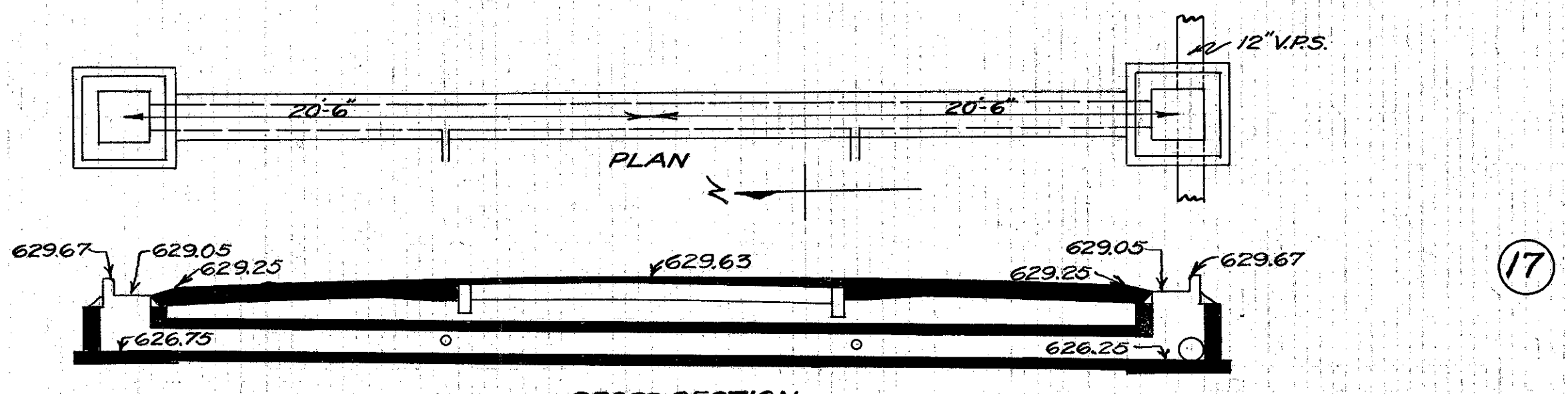
Checked by \_\_\_\_\_  
 Date \_\_\_\_\_  
 Div'n. Engr. \_\_\_\_\_



**CULVERT DATA**  
 Type: Std. V.P. enc. culvert Dr. #300  
 Size: 12"x40'  
 Work Req. Build 12"x40' Std. V.P. enc. culvert with I.B. on R&L. Place 12"x4" Vit. double Ts 8' R&L. of  $\Phi$ .  
 Drawn by Plummer  
 Date 3/1/32

**EST. QUANTITIES**  
 Exc. 8.4 Cu. Yds.  
 12" V.P. enc. 36 Lin. Ft.  
 12"x4" Vit. double Ts enc. 2  
 I.B.s Complete 2 (Rdw. Quant.)  
 Sta. 109+50

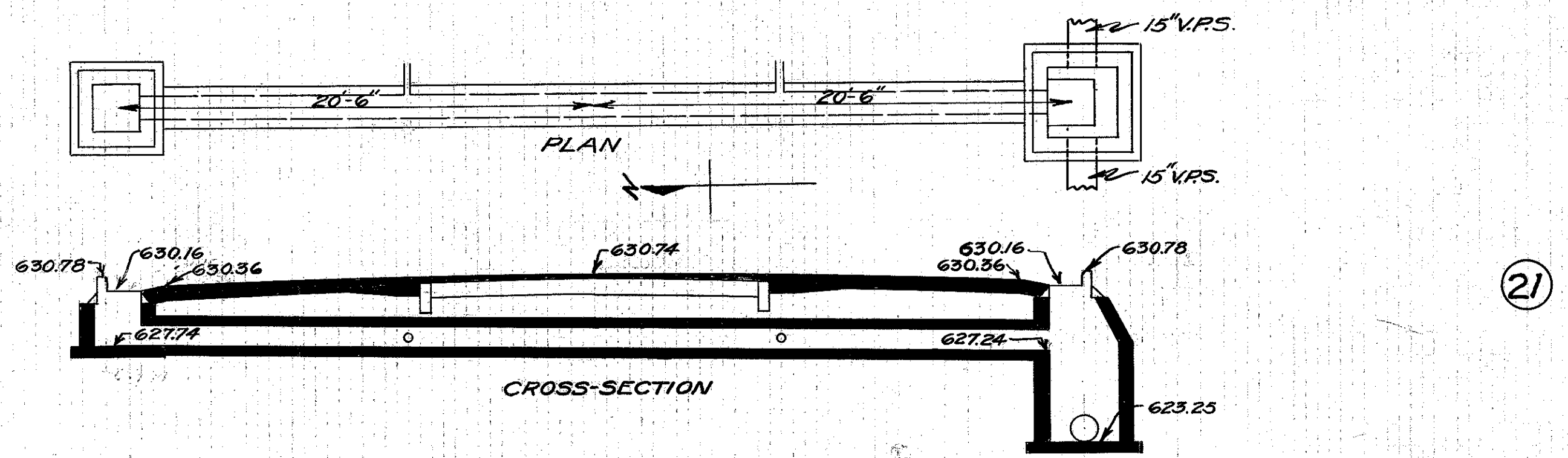
Checked by \_\_\_\_\_  
 Date \_\_\_\_\_  
 Div'n. Engr. \_\_\_\_\_



**CULVERT DATA**  
 Type: Std. V.P. enc. culvert Dr. #300  
 Size: 12"x40'  
 Work Req. Build 12"x40' Std. V.P. enc. culvert with I.B. on R&L. Place 12"x4" Vit. double Ts 8' R&L. of  $\Phi$ .  
 Drawn by Plummer  
 Date 3/1/32

**EST. QUANTITIES**  
 Exc. 8.2 Cu. Yds.  
 12" V.P. enc. 36 Lin. Ft.  
 12"x4" Vit. Ts enc. 2  
 I.B.s Complete 2 (Rdw. Quant.)  
 Sta. 105+75

Checked by \_\_\_\_\_  
 Date \_\_\_\_\_  
 Div'n. Engr. \_\_\_\_\_



**CULVERT DATA**  
 Type: Std. V.P. enc. culvert Dr. #300  
 Size: 12"x40'  
 Work Req. Build 12"x40' Std. V.P. enc. culvert with I.B. on L. & Inlet M.H. on R. Place 12"x4" Vit. double Ts 8' R&L. of  $\Phi$ .  
 Drawn by Plummer  
 Date 3/2/32

**EST. QUANTITIES**  
 Exc. 6.8 Cu. Yds.  
 12" V.P. enc. 36 Lin. Ft.  
 12"x4" Vit. Ts enc. 2  
 I.B. Complete 1 } (Rdw. Quant.)  
 Inlet M.H. Comp.  
 Sta. 119+50

Checked by \_\_\_\_\_  
 Date \_\_\_\_\_  
 Div'n. Engr. \_\_\_\_\_