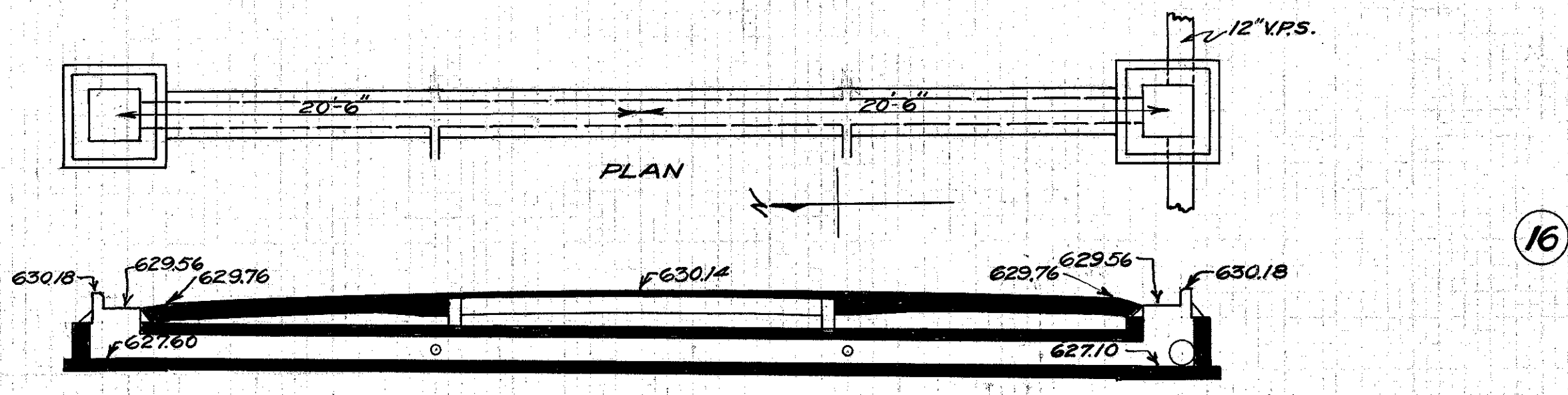


CULVERT DATA
 Type: Std. V.Penc. culvert Dr. #300
 Size: 12"x40"
 Work Req. Build 12"x40" Std. V.Penc. culvert with I.B. on R&L. Place 12"x4" Vit. Ts 8'R&L. of \pm .

EST. QUANTITIES
 Exc. 8.4 Cu. Yds.
 12" V.P. enc. 36 Lin. Ft.
 12"x4" Vit. Ts enc. 2
 I.B.'s Complete 2 (Rdw. Quant.)

Sta. 89+80

Drawn by Plummer Date 2/29/32 Checked by Date Div'n. Engr.

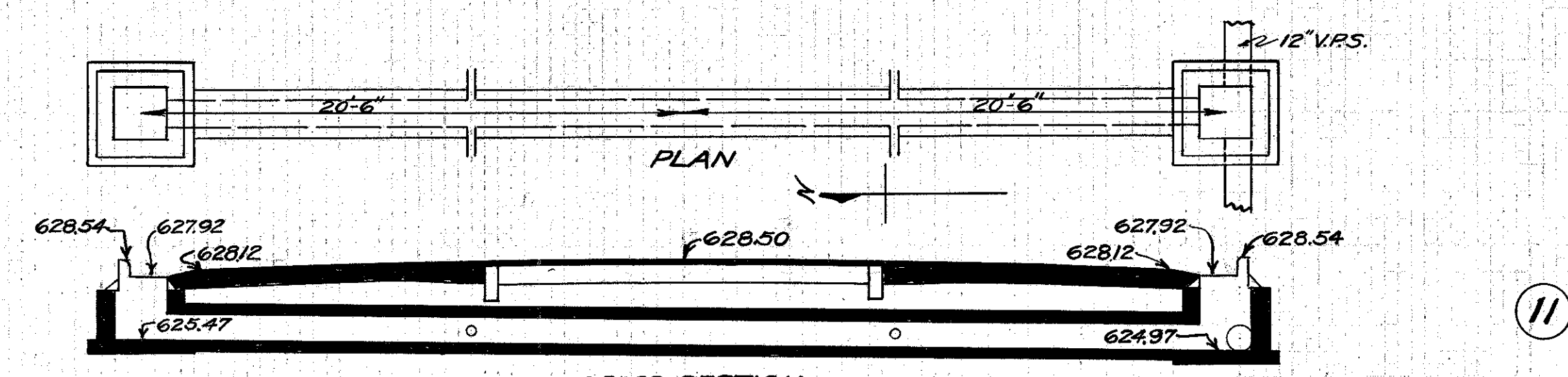


CULVERT DATA
 Type: Std. V.Penc. culvert Dr. #300
 Size: 12"x40"
 Work Req. Build 12"x40" Std. V.Penc. culvert with I.B. on R&L. Place 12"x4" Vit. Ts 8'R&L. of \pm .

EST. QUANTITIES
 Exc. 7.4 Cu. Yds.
 12" V.P. enc. 36 Lin. Ft.
 12"x4" Vit. Ts enc. 2
 I.B.'s Complete 2 (Rdw. Quant.)

Sta. 101+50

Drawn by Plummer Date 3/1/32 Checked by Date Div'n. Engr.

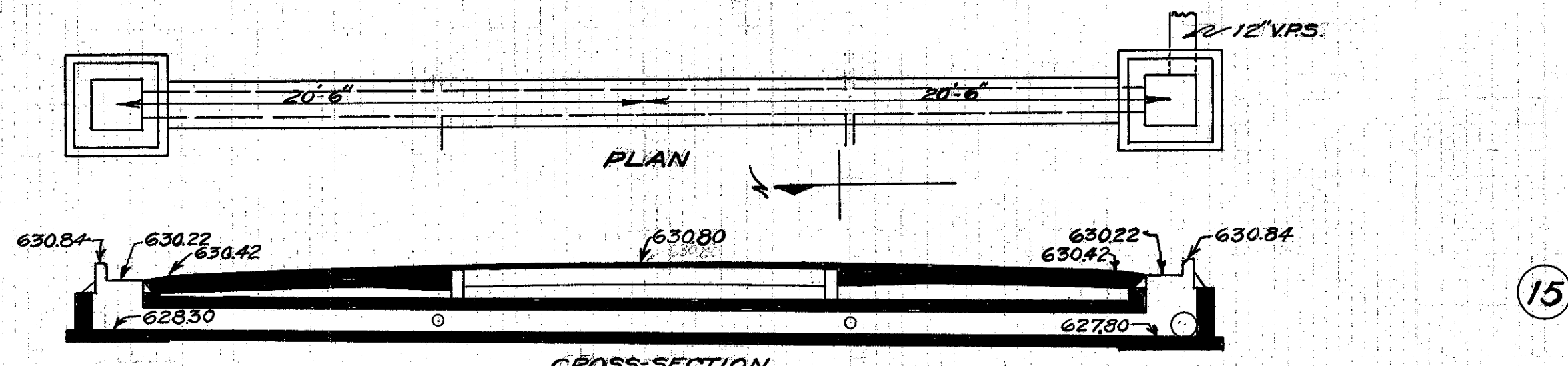


CULVERT DATA
 Type: Std. V.Penc. culvert Dr. #300
 Size: 12"x40"
 Work Req. Build 12"x40" Std. V.Penc. culvert with I.B. R&L. Place 12"x4" Vit. double Ts 8'R&L. of \pm .

EST. QUANTITIES
 Exc. 8.0 Cu. Yds.
 12" V.P. enc. 36 Lin. Ft.
 12"x4" Vit. Double Ts enc. 2
 I.B.'s Complete 2 (Rdw. Quant.)

Sta. 87+50

Drawn by Plummer Date 2/29/32 Checked by Date Div'n. Engr.

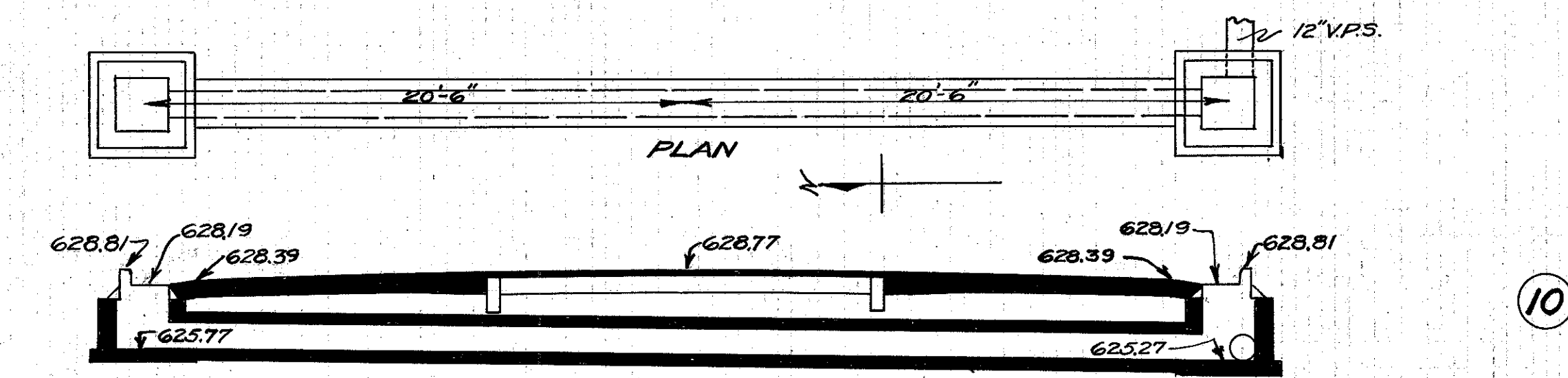


CULVERT DATA
 Type: Std. V.Penc. culvert Dr. #300
 Size: 12"x40"
 Work Req. Build 12"x40" Std. V.Penc. culvert with I.B. R&L. Place 12"x4" Vit. Ts 8'R&L. of \pm .

EST. QUANTITIES
 Exc. 7.8 Cu. Yds.
 12" V.P. enc. 36 Lin. Ft.
 12"x4" Vit. Ts enc. 2
 I.B. Complete 2 (Rdw. Quant.)

Sta. 98+0

Drawn by Plummer Date 2/29/32 Checked by Date Div'n. Engr.

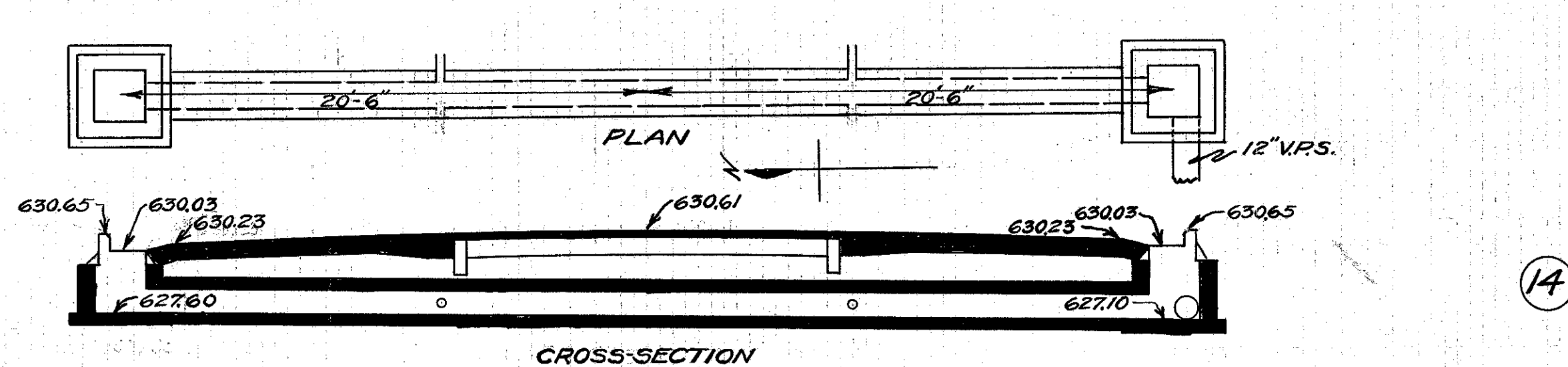


CULVERT DATA
 Type: Std. V.Penc. culvert Dr. #300
 Size: 12"x40"
 Work Req. Build 12"x40" Std. V.Penc. culvert with I.B. R&L.

EST. QUANTITIES
 Exc. 8.8 Cu. Yds.
 12" V.P. enc. 40 Lin. Ft.
 12"x4" Vit. Ts enc. 2
 I.B.'s Complete 2 (Rdw. Quant.)

Sta. 86+0

Drawn by Plummer Date 2/29/32 Checked by Date Div'n. Engr.

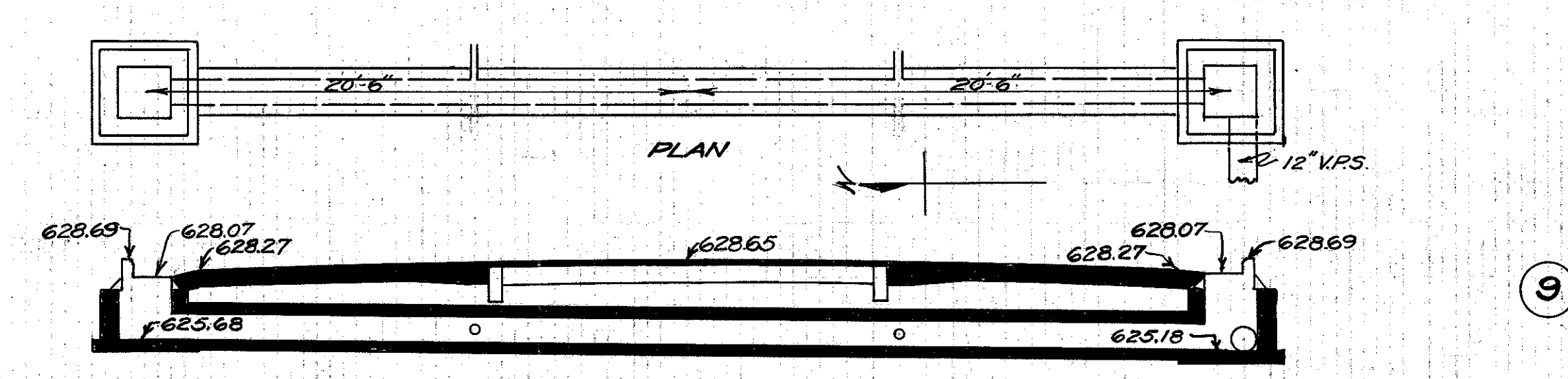


CULVERT DATA
 Type: Std. V.Penc. culvert Dr. #300
 Size: 12"x40"
 Work Req. Build 12"x40" Std. V.Penc. culvert with I.B. R&L. Place 12"x4" Vit. Ts 8'R&L. of \pm .

EST. QUANTITIES
 Exc. 8.4 Cu. Yds.
 12" V.P. enc. 36 Lin. Ft.
 12"x4" Vit. Ts enc. 2
 I.B.'s Complete 2 (Rdw. Quant.)

Sta. 96+0

Drawn by Plummer Date 2/29/32 Checked by Date Div'n. Engr.

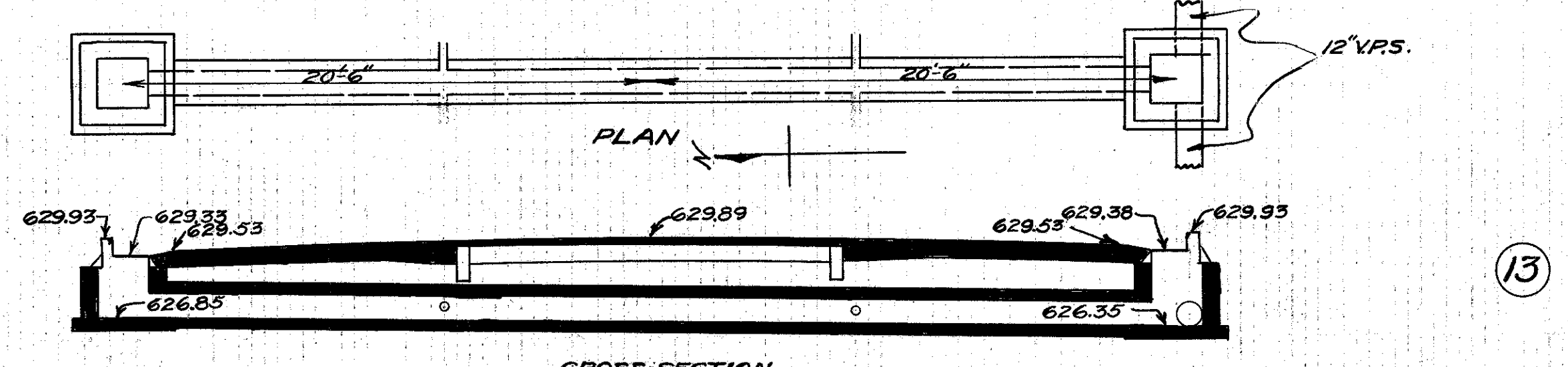


CULVERT DATA
 Type: Std. V.Penc. culvert Dr. #300
 Size: 12"x40"
 Work Req. Build 12"x40" Std. V.Penc. culvert with I.B. R&L. Place 12"x4" Vit. Ts 8'R&L. of \pm .

EST. QUANTITIES
 Exc. 9.2 Cu. Yds.
 12" V.P. enc. 36 Lin. Ft.
 12"x4" Vit. Ts enc. 2
 I.B.'s Complete 2 (Rdw. Quant.)

Sta. 80+75

Drawn by Plummer Date 2/29/32 Checked by Date Div'n. Engr.



CULVERT DATA
 Type: Std. V.Penc. culvert Dr. #300
 Size: 12"x40"
 Work Req. Build 12"x40" Std. V.Penc. culvert with I.B. R&L. Place 12"x4" Vit. Ts 8'R&L. of \pm .

EST. QUANTITIES
 Exc. 8.2 Cu. Yds.
 12" V.P. enc. 36 Lin. Ft.
 12"x4" Vit. Ts enc. 2
 I.B.'s Complete 2 (Rdw. Quant.)

Sta. 93+0

Drawn by Plummer Date 2/29/32 Checked by Date Div'n. Engr.