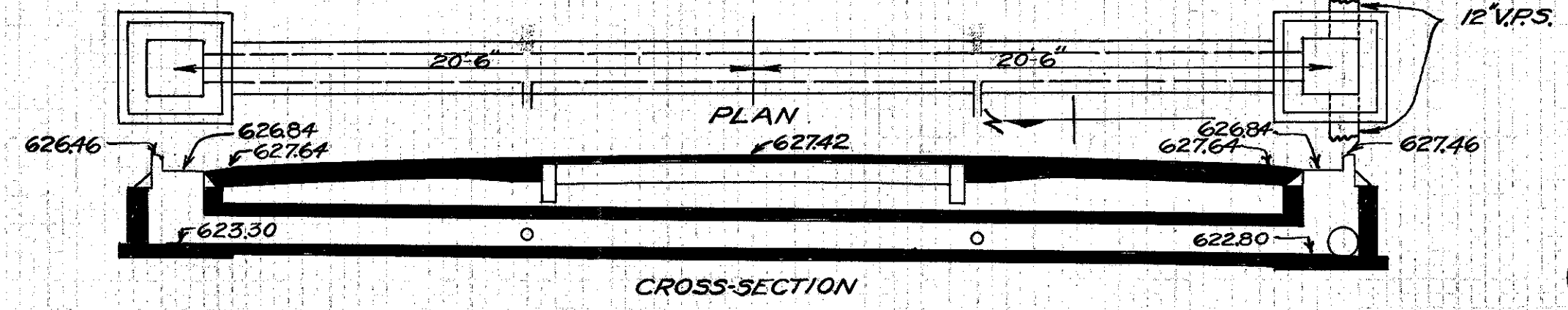


CULVERT DATA
 Type: Std. V.P. enc. culvert Dr. #300
 Size: 12' x 40'
 Work Req: Build 12' x 40' Std. V.P. enc. culvert with 1.8' R&L. Place 12' x 4' Vit. double Ts 8' R&L of \pm .

EST. QUANTITIES
 Exc. 8.0 Cu.Yds.
 12' V.P. enc. 36 Lin.Ft.
 12' x 4' Vit. Double Ts enc. 2
 1.8's Complete 2 (Rdw. Quant.)

Drawn by: Plummer
 Date: 2/26/32

Checked by: _____
 Date: _____
 Div'n Engr: _____
 Sta. 58+50

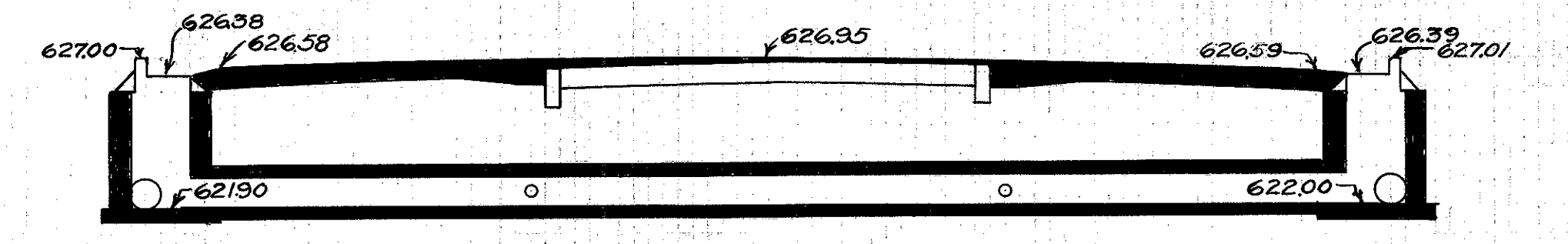
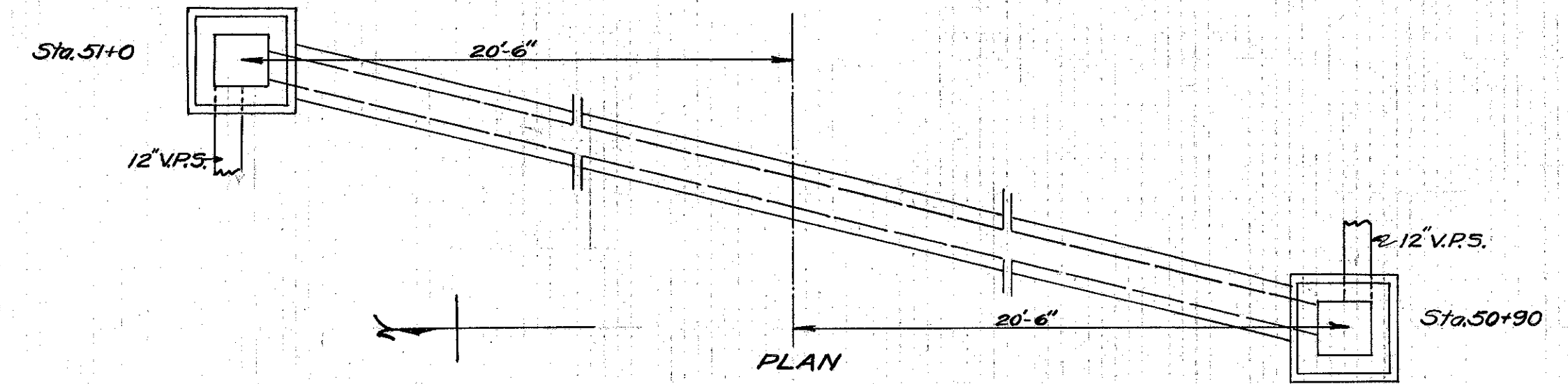


CULVERT DATA
 Type: Std. V.P. enc. Culvert Dr. #300
 Size: 12' x 40'
 Work Req: Build 12' x 40' Std. V.P. enc. culvert with 1.8' on R&L. Place 12' x 4' Vit. double Ts 8' R&L of \pm .

EST. QUANTITIES
 Exc. 8.5 Cu.Yds.
 12' V.P. enc. 36 Lin.Ft.
 12' x 4' Vit. Ts enc. 2
 1.8's Complete 2 (Rdw. Quant.)

Drawn by: Plummer
 Date: 2/26/32

Checked by: _____
 Date: _____
 Div'n Engr: _____
 Sta. 55+00

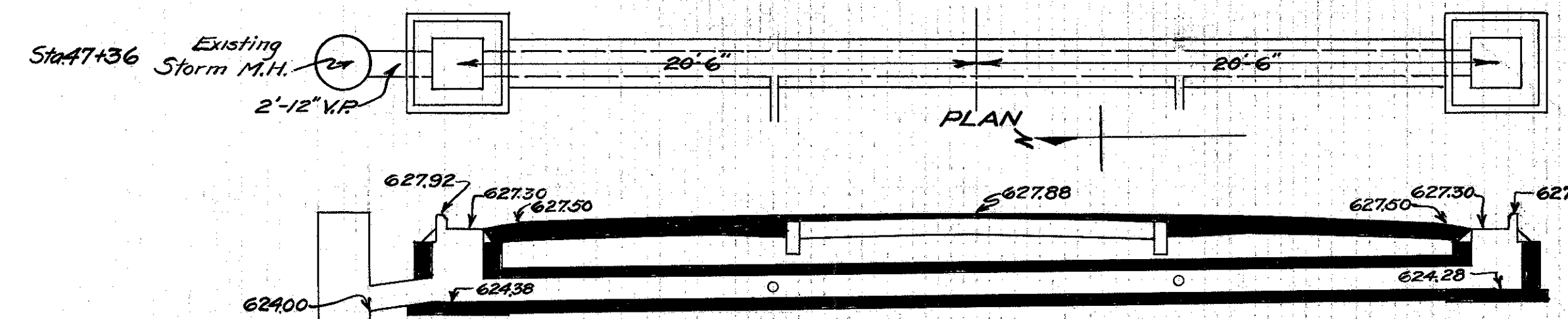


CULVERT DATA
 Type: Std. V.P. enc. culvert Dr. #300
 Size: 12' x 40'
 Work Req: Build 12' x 40' Std. V.P. enc. culvert with 1.8' on L. at Sta. 51+0 & 1.8' on R. at Sta. 50+90. Place 12' x 4' Vit. double Ts 8' R&L of \pm .

EST. QUANTITIES
 Exc. 15.0 Cu.Yds.
 12' V.P. enc. 36 Lin.Ft.
 12' x 4' Vit. Double Ts enc. 2
 1.8's Complete 2 (Rdw. Quant.)

Drawn by: Plummer
 Date: 2/26/32

Checked by: _____
 Date: _____
 Div'n Engr: _____
 Sta. 50+95

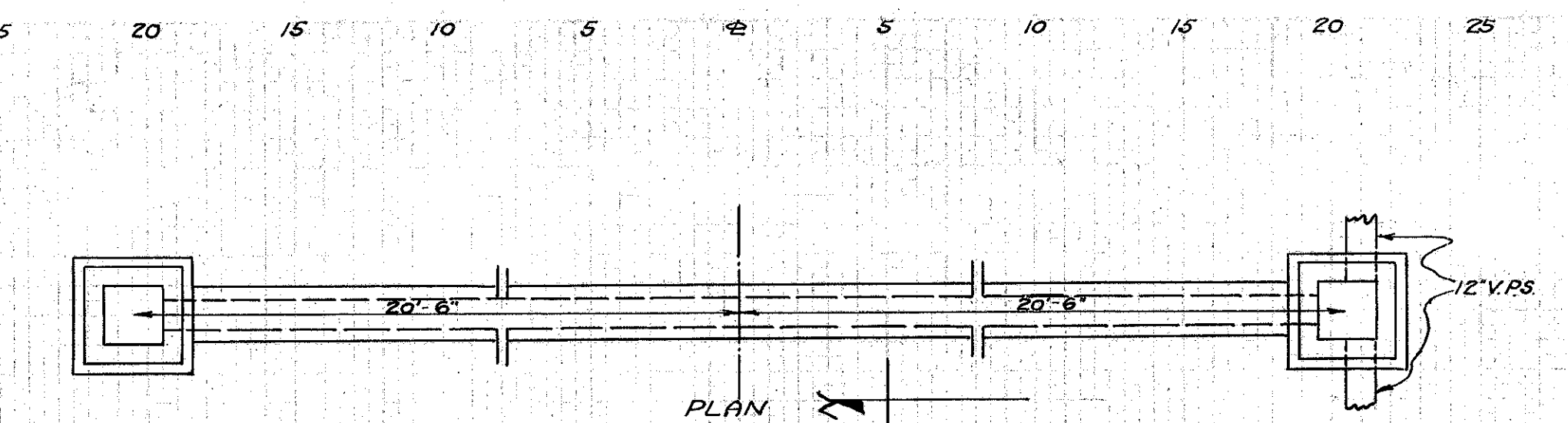


CULVERT DATA
 Type: Std. V.P. enc. culvert Dr. #300
 Size: 12' x 40'
 Work Req: Build 12' x 40' Std. V.P. enc. culvert with 1.8' R&L. Connect 1.8' on L. into existing M.H. by laying 2' 12" V.P. Place 12' x 4' Ts 8' R&L of \pm .

EST. QUANTITIES
 Exc. 9.0 Cu.Yds.
 12' V.P. enc. 36 Lin.Ft.
 12' x 4' Ts enc. 2
 12' V.P. 2 Lin.Ft.
 1.8's Complete 2 (Rdw. Quant.)

Drawn by: Plummer
 Date: 2/26/32

Checked by: _____
 Date: _____
 Div'n Engr: _____
 Sta. 47+38

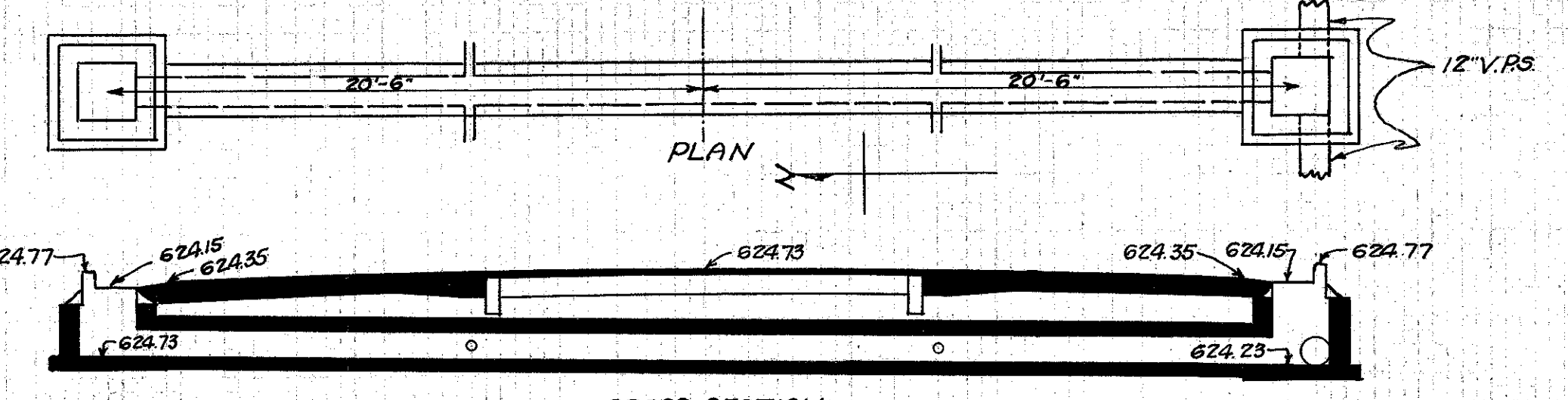


CULVERT DATA
 Type: Std. V.P. enc. culvert Dr. #300
 Size: 12' x 40'
 Work Req: Build 12' x 40' Std. V.P. enc. culvert with 1.8' on R&L. Place 12' x 4' Vit. double Ts 8' R&L of \pm .

EST. QUANTITIES
 Exc. 7.6 Cu.Yds.
 12' V.P. enc. 36 Lin.Ft.
 12' x 4' Vit. double Ts enc. 2
 1.8's Complete 2 (Rdw. Quant.)

Drawn by: Plummer
 Date: 2/27/32

Checked by: _____
 Date: _____
 Div'n Engr: _____
 Sta. 78+0

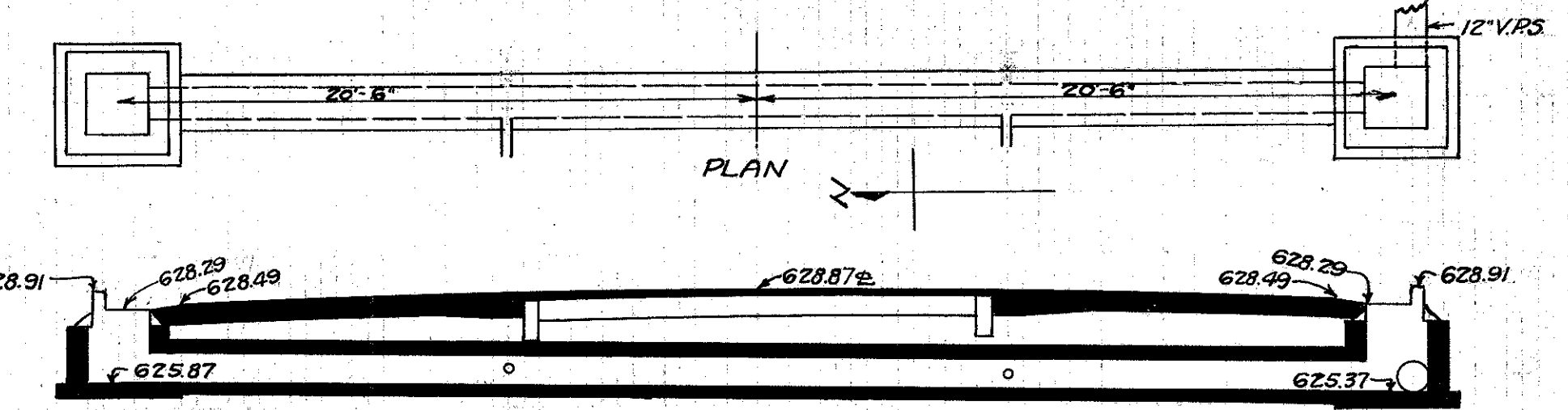


CULVERT DATA
 Type: Std. V.P. enc. culvert Dr. #300
 Size: 12' x 40'
 Work Req: Build 12' x 40' Std. V.P. enc. culvert with 1.8' R&L. Place 12' x 4' Vit. double Ts 8' R&L of \pm .

EST. QUANTITIES
 Exc. 9.4 Cu.Yds.
 12' V.P. enc. 36 Lin.Ft.
 12' x 4' Vit. double Ts enc. 2
 1.8's Complete 2 (Rdw. Quant.)

Drawn by: Plummer
 Date: 2/27/32

Checked by: _____
 Date: _____
 Div'n Engr: _____
 Sta. 73+50

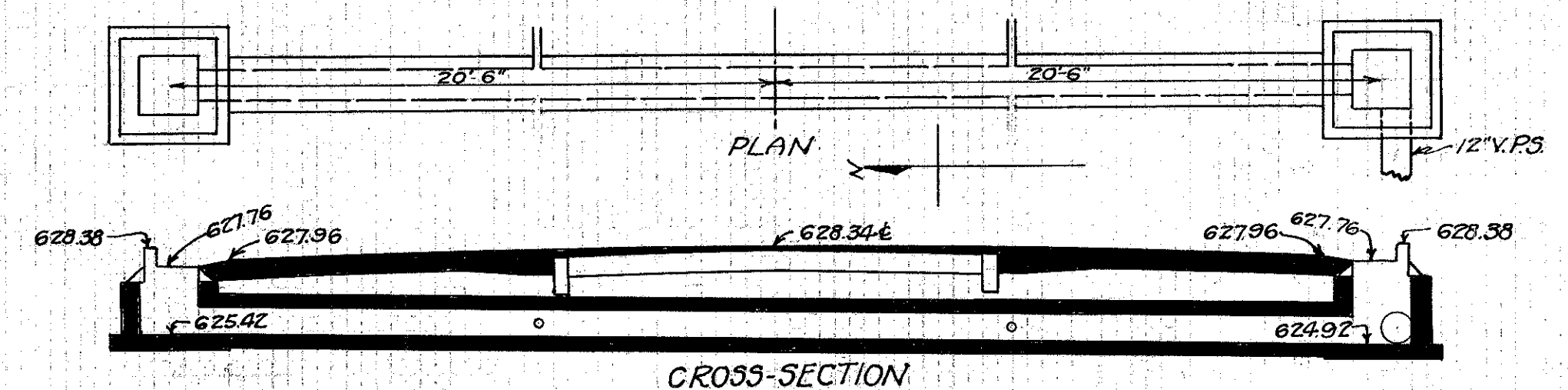


CULVERT DATA
 Type: Std. V.P. enc. culvert Dr. #300
 Size: 12' x 40'
 Work Req: Build 12' x 40' Std. V.P. enc. culvert with 1.8' R&L. Place 12' x 4' Vit. double Ts 8' R&L of \pm .

EST. QUANTITIES
 Exc. 9.5 Cu.Yds.
 12' V.P. enc. 36 Lin.Ft.
 12' x 4' Vit. Ts enc. 2
 1.8's Complete 2 (Rdw. Quant.)

Drawn by: Plummer
 Date: 2/27/32

Checked by: _____
 Date: _____
 Div'n Engr: _____
 Sta. 69+70



CULVERT DATA
 Type: Std. V.P. enc. culvert Dr. #300
 Size: 12' x 40'
 Work Req: Build 12' x 40' Std. V.P. enc. culvert with 1.8' R&L. Place 12' x 4' Vit. double Ts 8' R&L of \pm .

EST. QUANTITIES
 Exc. 8.0 Cu.Yds.
 12' V.P. enc. 36 Lin.Ft.
 12' x 4' Vit. Ts enc. 2
 1.8's Complete 2 (Rdw. Quant.)

Drawn by: Plummer
 Date: 2/26/32

Checked by: _____
 Date: _____
 Div'n Engr: _____
 Sta. 63+25