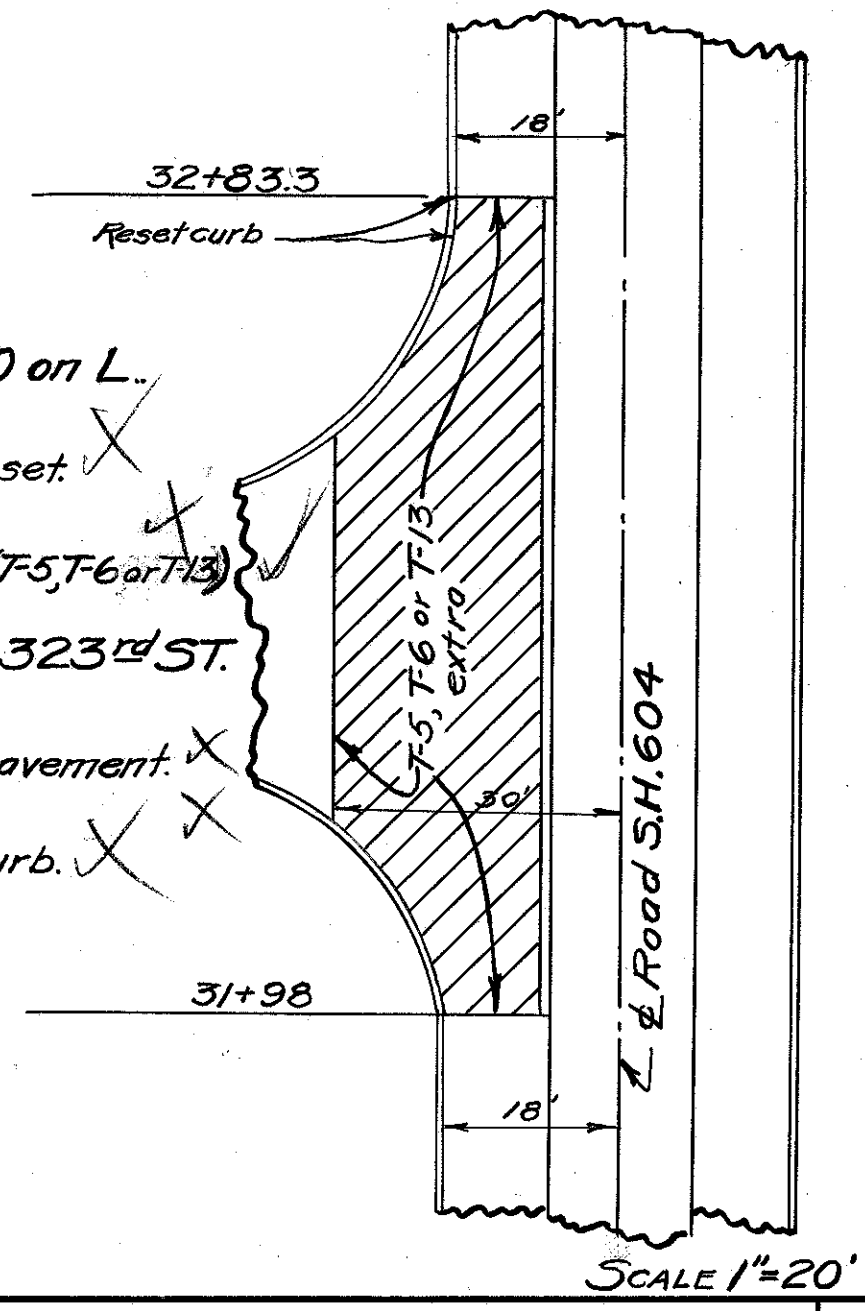


Intersection at Sta. 32+00 on L.

6 lin. ft. concrete raised curb to be reset.
 Additions 31+98 to 32+83.3
 162.4 sq. yds. bituminous resurfacing (T-5, T-6 or T-13)

E. 323rd ST.

Deductions 31+98 to 32+83.3
 94.8 sq. yds. 10'x8'x8" rein. concrete pavement.
 9.5 sq. yds. 8" concrete (12" strip).
 85.0 lin. ft. integral concrete raised curb.

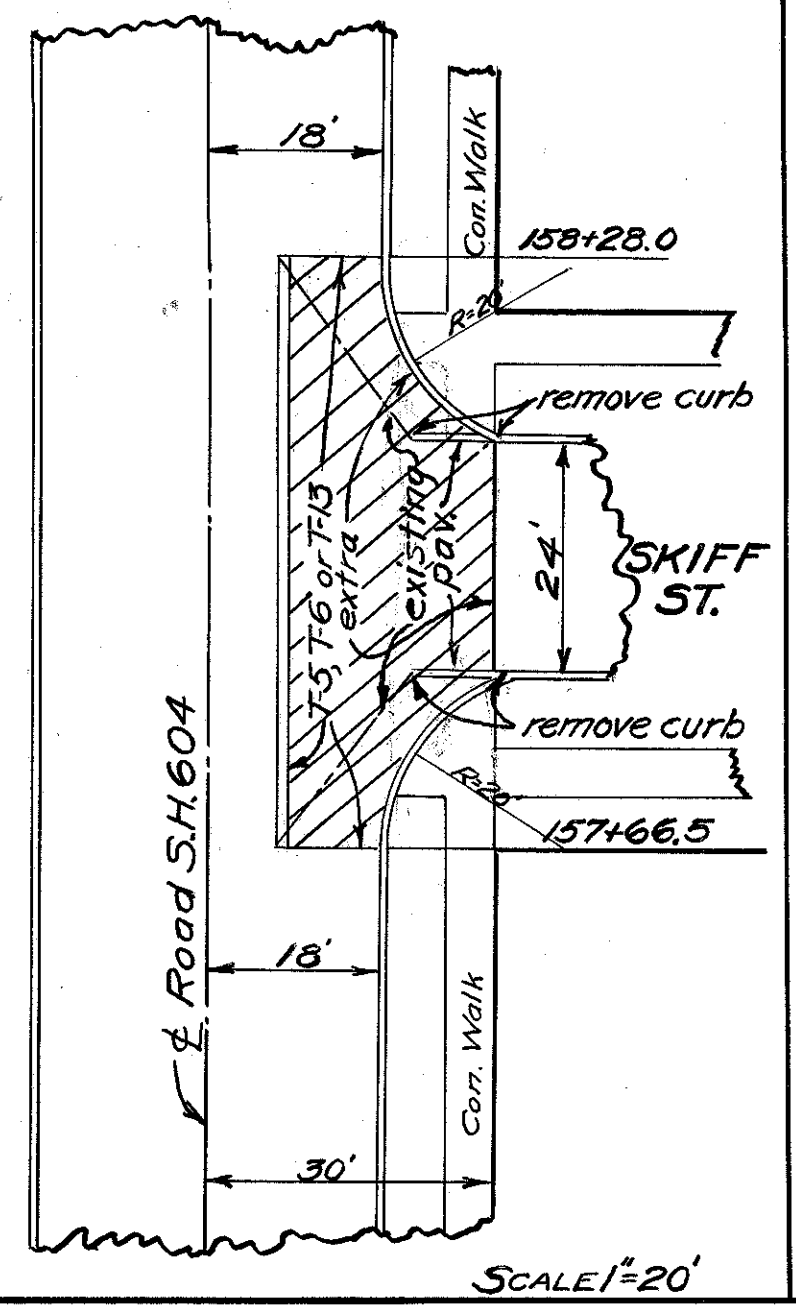


SCALE 1"=20'

Intersection at Sta. 157+99.12 on R.

150 sq. ft. 4" concrete walk.
 16 lin. ft. existing conc. raised curb removed
 Additions 157+66 to 158+28
 108.0 sq. yds. bituminous resurfacing (T-5, T-6 or T-13)

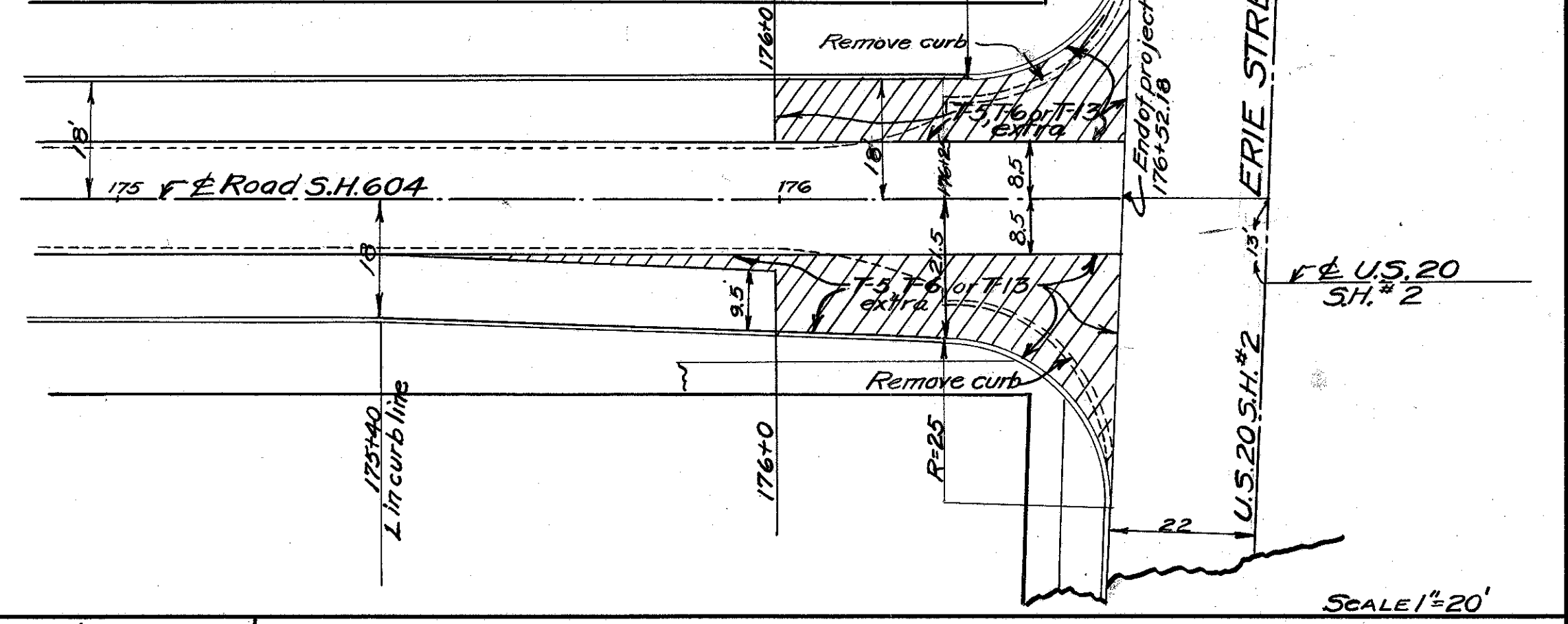
Deductions 157+66.51 to 158+28
 39.1 sq. yds. 10'x8'x8" rein. concrete pavement.
 6.8 sq. yds. 8" concrete (12" strip)
 14.0 lin. ft. integral concrete raised curb.



SCALE 1"=20'

Intersection at Sta. 176+

92 lin. ft. concrete raised curb to be removed
 Additions 175+40 to 176+52.18
 29 lin. ft. integral concrete raised curb.
 166.0 sq. yds. bituminous resurfacing (T-5, T-6 or T-13)
 89.0 sq. yds. 8" concrete (12" strip)
 Deductions 176+0 to 176+52.18
 116 sq. yds. 10'x8'x8" rein. concrete pavement.



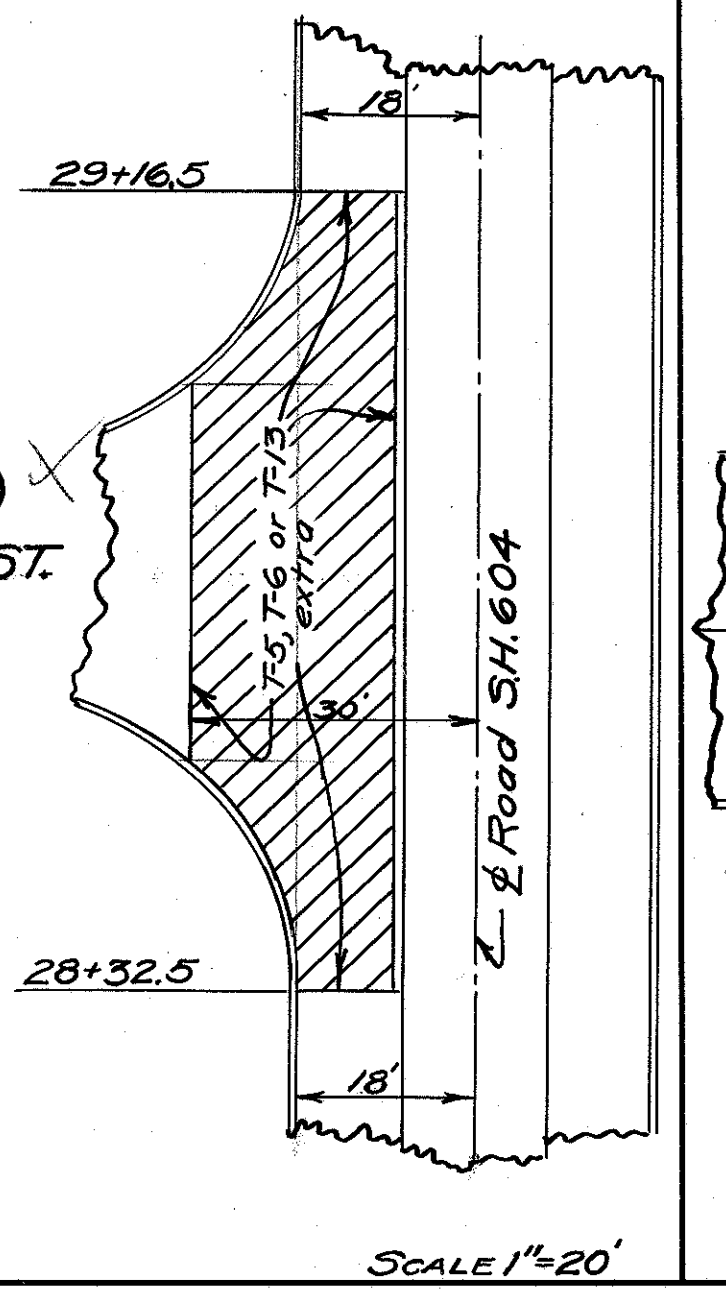
SCALE 1"=20'

Intersection at Sta. 28+ on L.

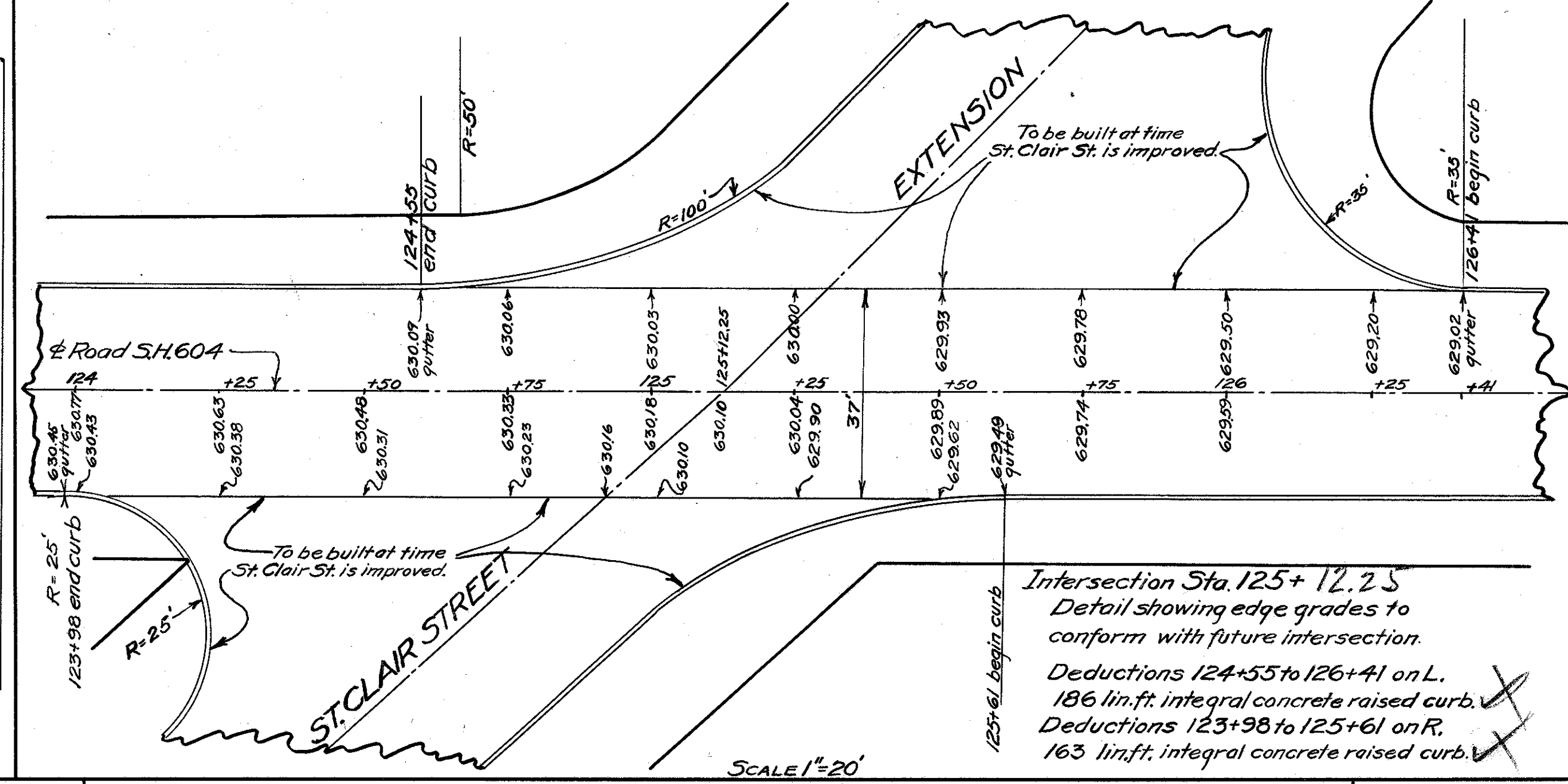
Additions 28+32.5 to 29+16.5
 163.0 sq. yds. bituminous resurfacing (T-5, T-6 or T-13)

E. 322nd ST.

Deductions 28+32.5 to 29+16.5
 93.3 sq. yds. 10'x8'x8" rein. concrete pavement.
 9.5 sq. yds. 8" concrete (12" strip).
 84.0 lin. ft. integral concrete raised curb.



SCALE 1"=20'



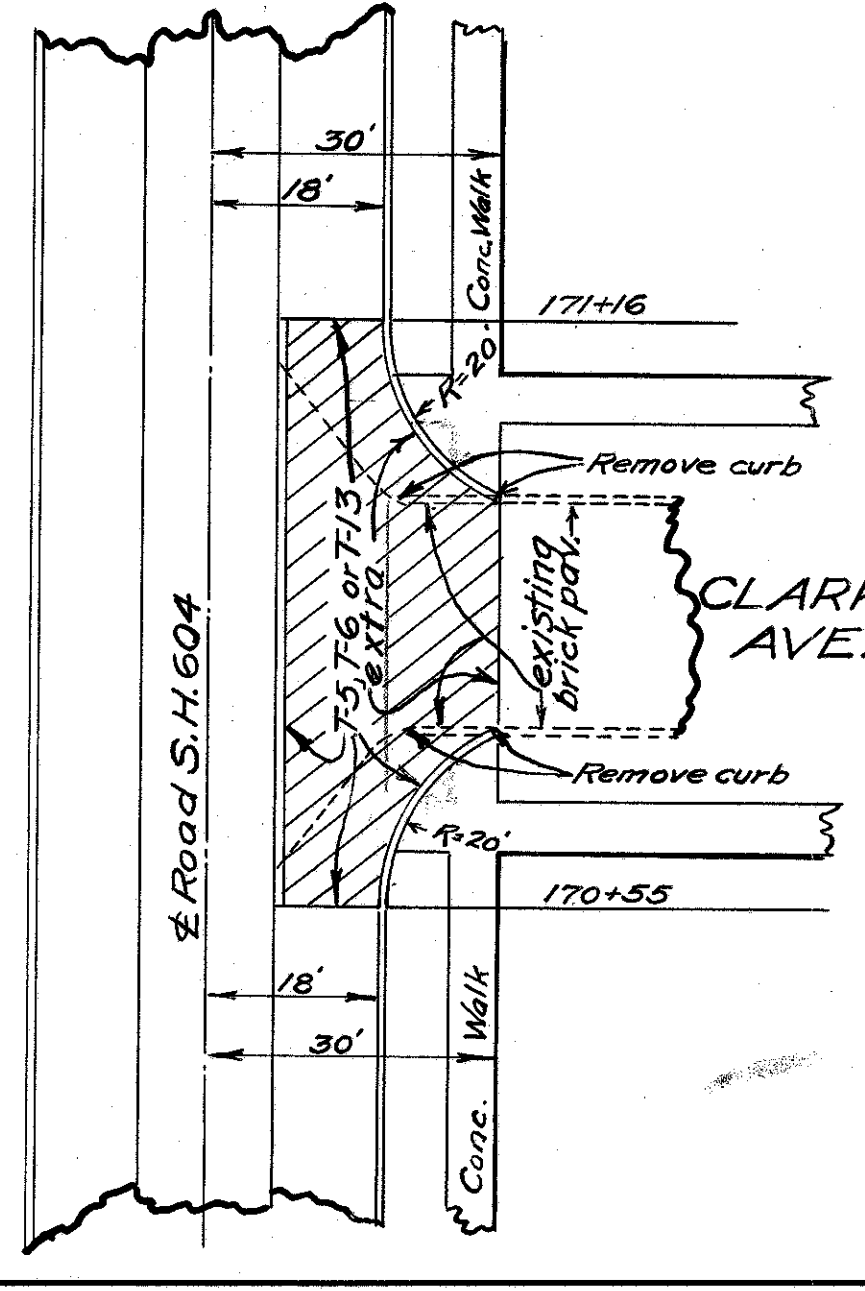
SCALE 1"=20'

Intersection at Sta. 170+ on R.

16 lin. ft. existing concrete raised curb to be removed.
 150 sq. ft. 4" conc. sidewalk to be built.

Additions 170+55 to 171+16
 109.7 sq. yds. bituminous resurfacing (T-5, T-6 or T-13)

Deductions 170+55 to 171+16
 30.0 sq. yds. 10'x8'x8" rein. concrete pavement.
 6.8 sq. yds. 8" concrete (12" strip)
 14 lin. ft. integral concrete raised curb.

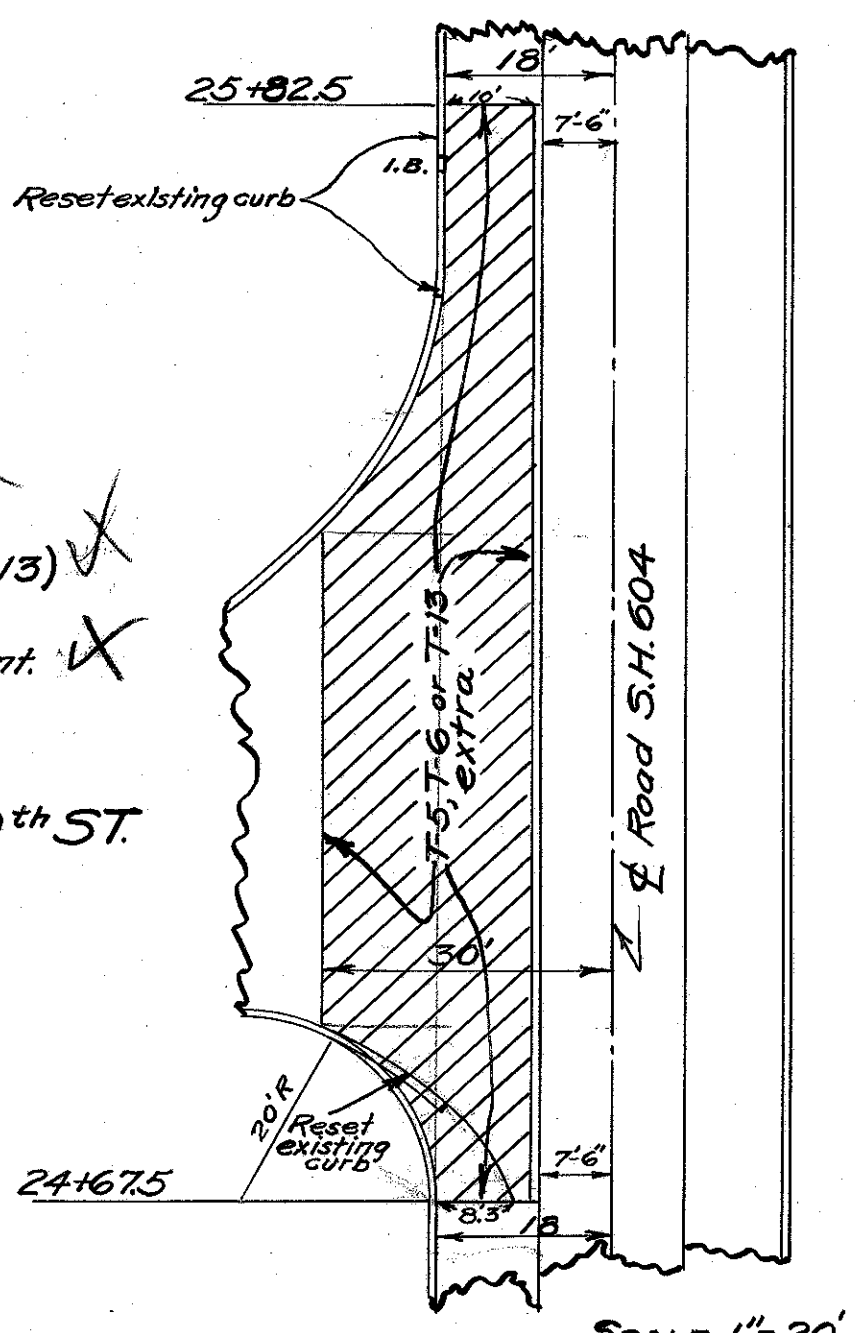


SCALE 1"=20'

Intersection at Sta. 25+ on L.

30 lin. ft. concrete raised curb to be reset
 Additions 24+67.5 to 25+82.5
 2098 Sq. Yds. bituminous resurfacing (T-5, T-6, or T-13)
 116.7 sq. yds. 10'x8'x8" rein. concrete pavement.
 12.8 sq. yds. 8" concrete (12" strip)
 105.0 lin. ft. integral concrete raised curb.

E. 320th ST.



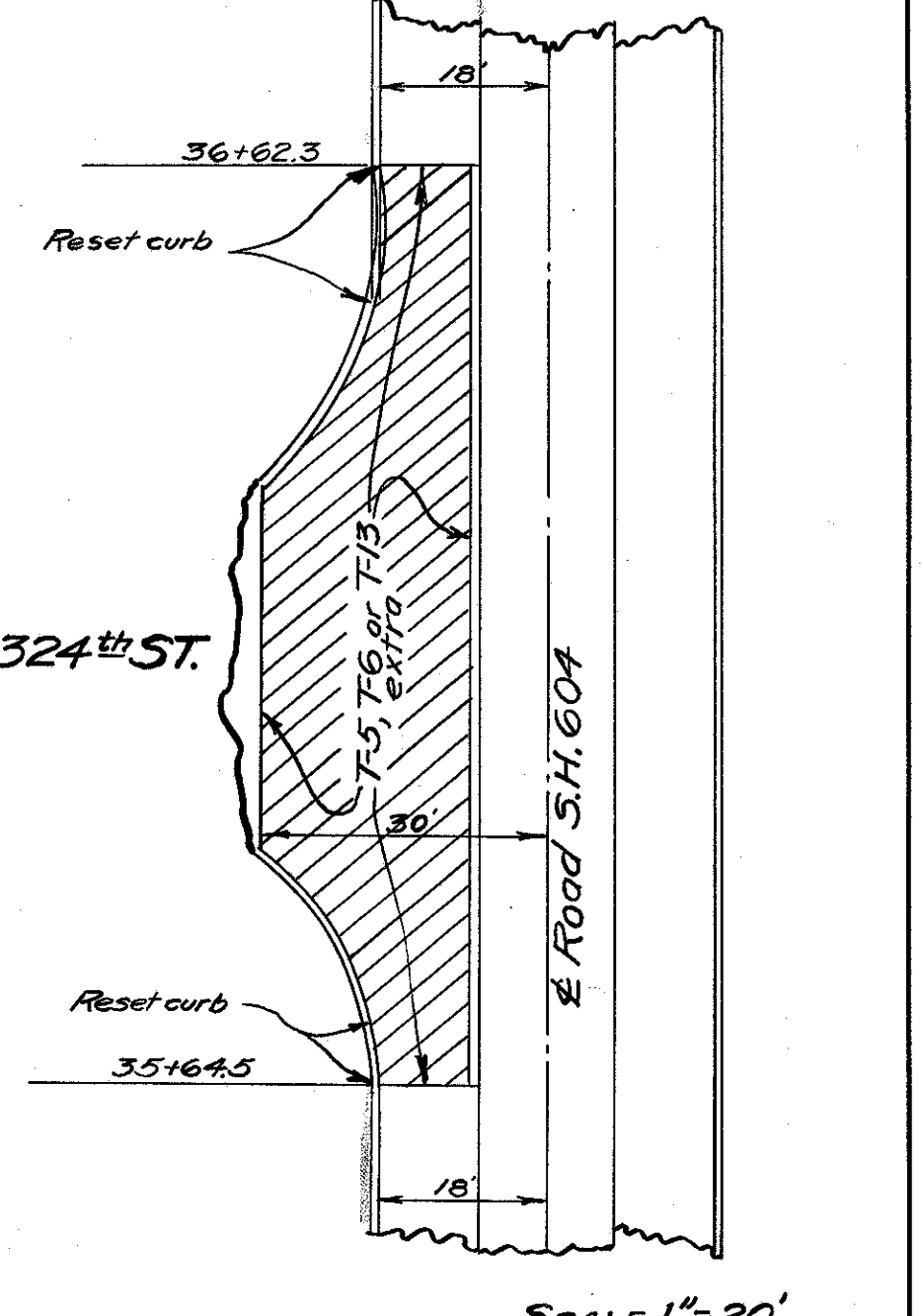
SCALE 1"=20'

Intersection at Sta. 36+ on L.

23 lin. ft. concrete raised curb to be reset
 Additions 35+64.5 to 36+62.3
 173.5 sq. yds. bituminous resurfacing (T-5, T-6 or T-13)

Deductions 35+64.5 to 36+62.3
 108.7 sq. yds. 10'x8'x8" rein. concrete pavement.
 10.3 sq. yds. 8" concrete (12" strip)
 98 lin. ft. integral concrete raised curb

E. 324th ST.

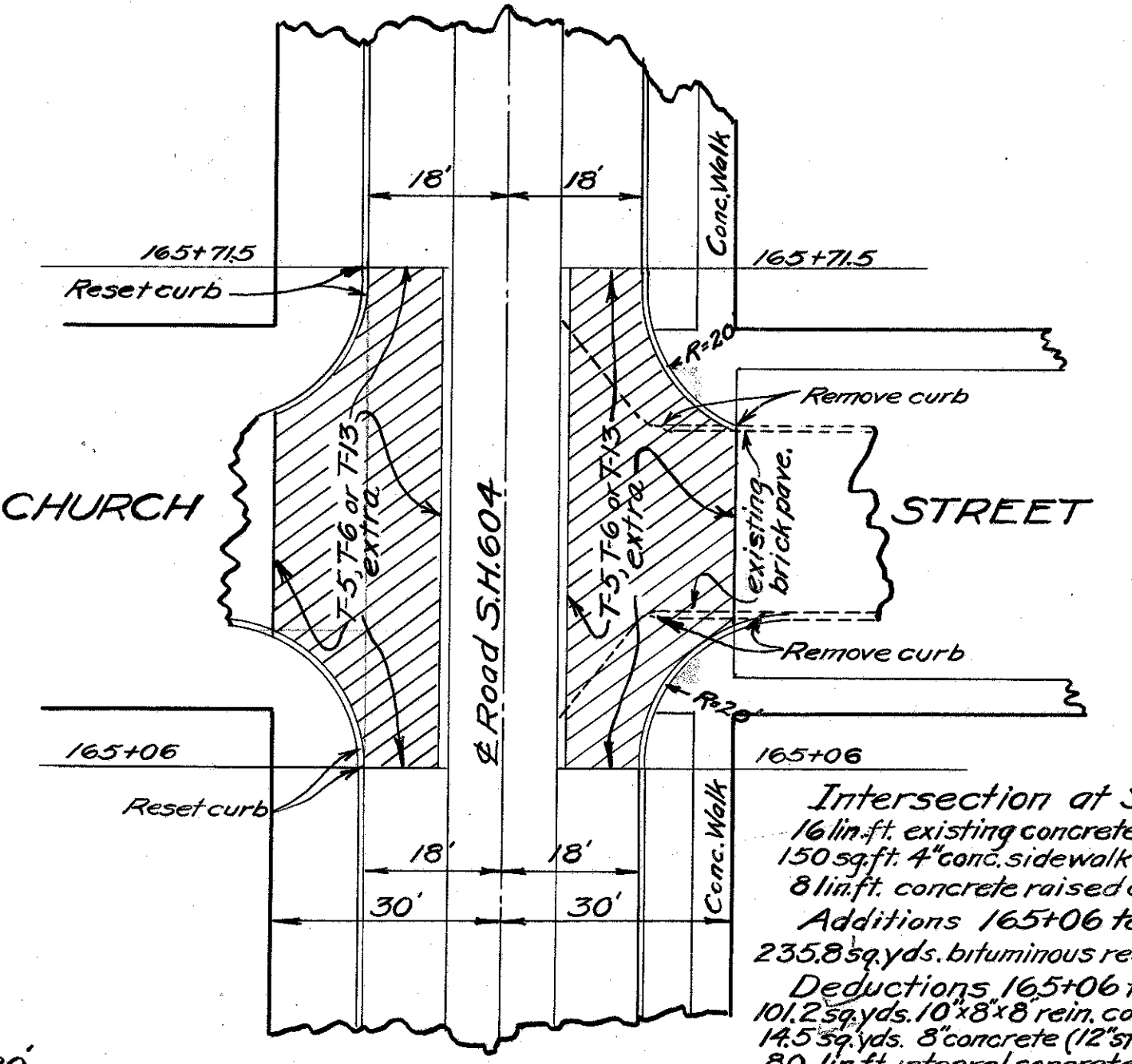


SCALE 1"=20'

Intersection at Sta. 165+

16 lin. ft. existing concrete raised curb to be removed.
 150 sq. ft. 4" conc. sidewalk to be built.
 8 lin. ft. concrete raised curb reset
 Additions 165+06 to 165+71.5
 235.8 sq. yds. bituminous resurfacing (T-5, T-6 or T-13)
 101.2 sq. yds. 10'x8'x8" rein. concrete pavement.
 14.5 sq. yds. 8" concrete (12" strip)
 80 lin. ft. integral concrete raised curb.

CHURCH STREET



SCALE 1"=20'