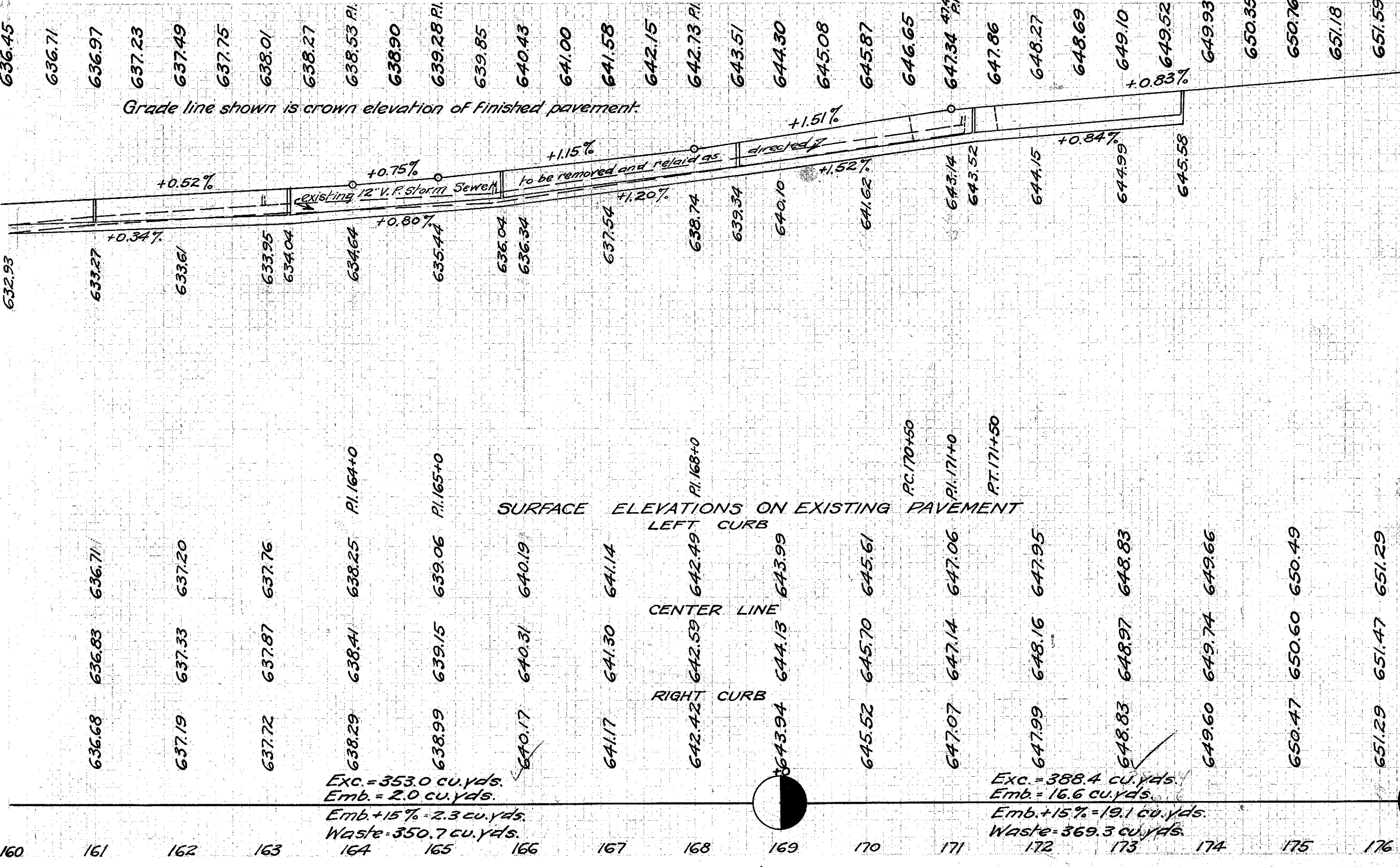


From Sta. 173+70 to Sta. 176+25, 18'-9" to R. of C., Lay 254 lin. ft. 6" drain tile, 30" deep, stone backfill (connect with I.B.)
 From Sta. 160+0 to Sta. 176+25, 7'-9" to L. of C., Lay 1545 lin. ft. 4" drain tile, 24" deep, stone backfill (connect with culvert)
 From Sta. 160+0 to Sta. 176+25, 7'-9" to R. of C., Lay 1480 lin. ft. 4" drain tile, 24" deep, stone backfill (connect with culvert)
 From Sta. 160+0 to Sta. 176+25, 18'-9" to L. of C., Lay 1545 lin. ft. 6" drain tile, 30" deep, stone backfill (connect with I.B.s)

Raise M.H. Tops to grade at sta.: 161+67, 165+92, 165+99, 165+53R, 170+87, 170+99R, 173+79.
 Raise or lower Valve box to grade at sta. 162+01 L.

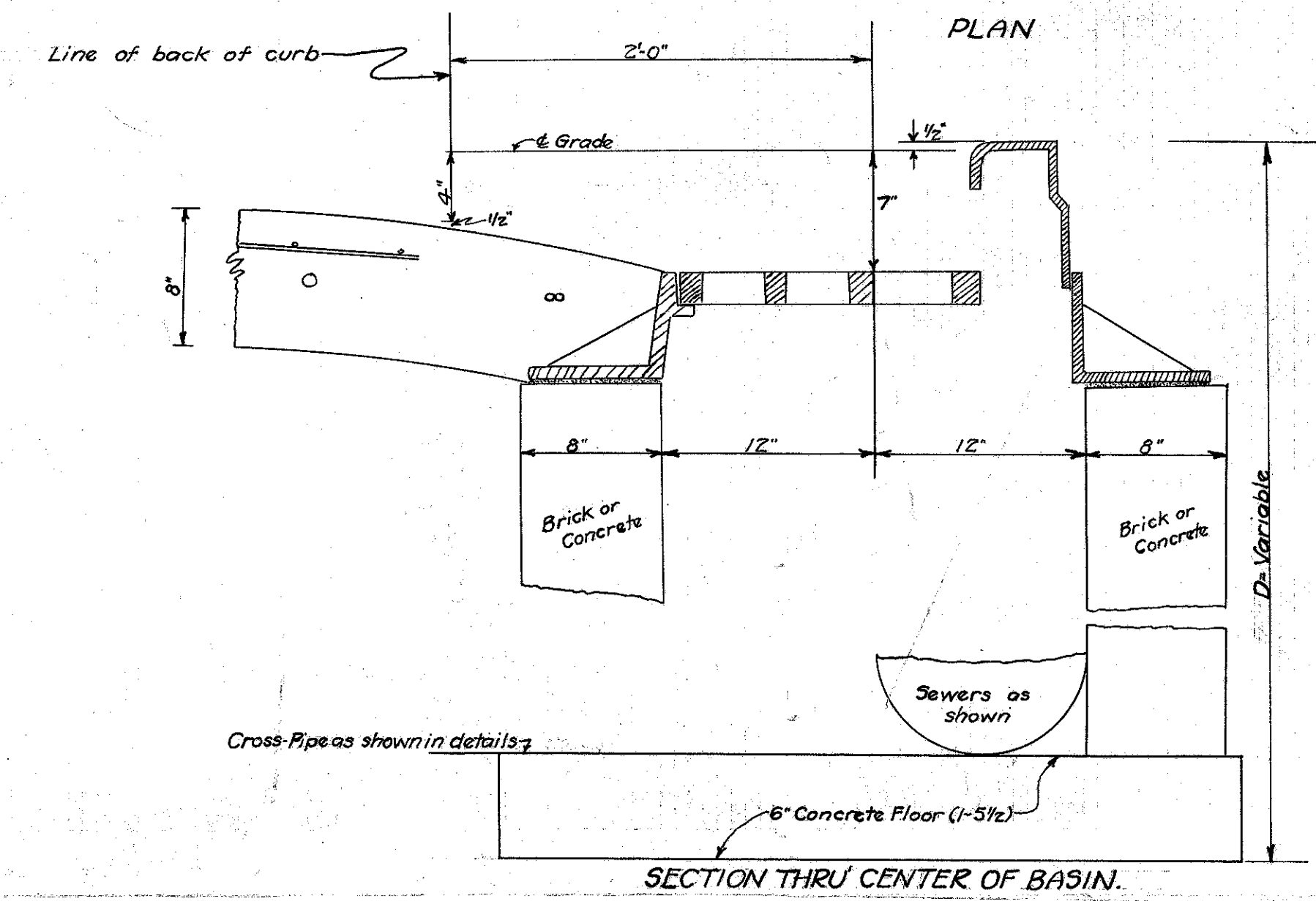
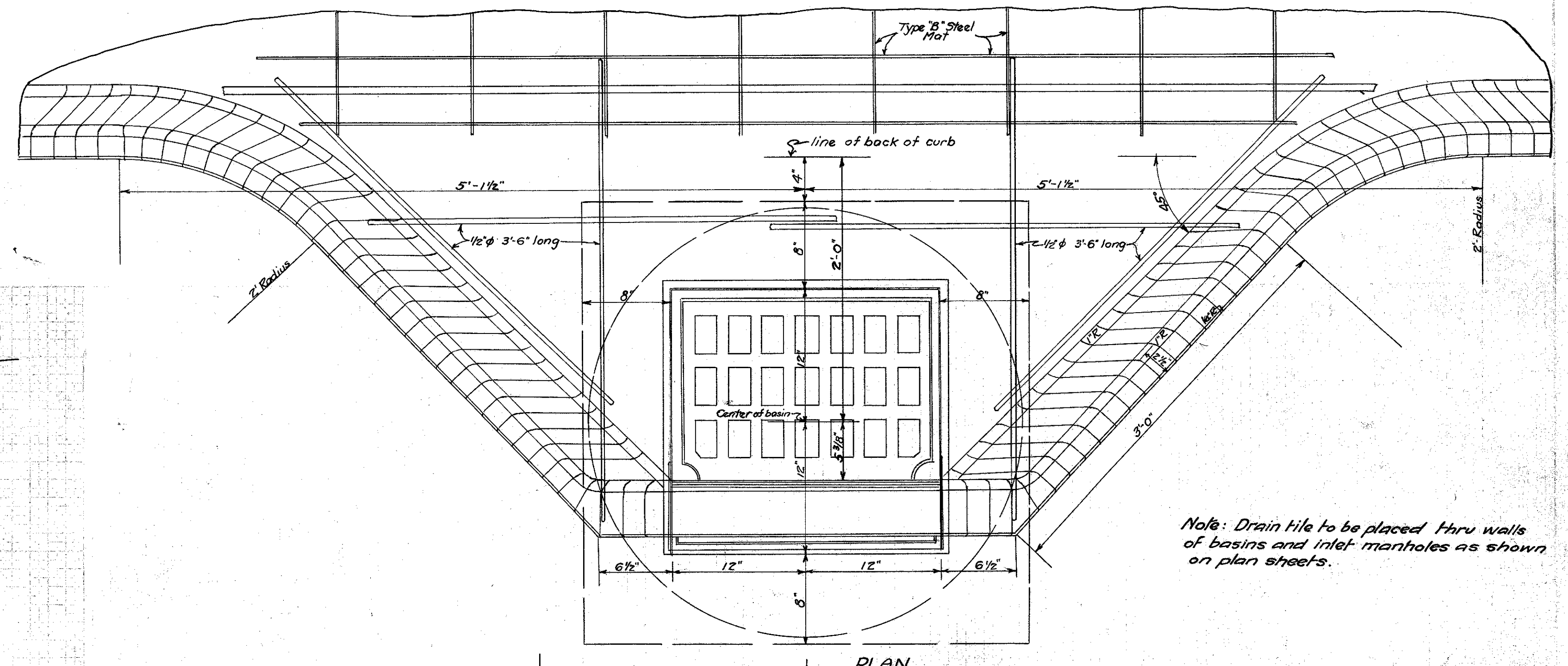
Note: V = Remove Tree
 From Sta. 160+0 to Sta. 173+70, 21' to R. of C. Lay 1360 lin. ft. of 12" vit. pipe sewer.
 From Sta. 160+0 to Sta. 171+14, Remove 1108 lin. ft. of 12" vit. pipe sewer and relay as directed.

B.M. # 24 Sta. 164+46 Spike in root of 20" M. Elev. = 639.07
 B.M. # 25 Sta. 170+49 Spike in root of 30" M. Elev. = 646.58
 B.M. # 26 Sta. 176+04 Spike in west roof of 36" alm 20' to R. of C. Elev. = 652.13



Exc. = 353.0 cu. yds.
 Emb. = 2.0 cu. yds.
 Emb. + 15% = 2.3 cu. yds.
 Waste = 350.7 cu. yds.

Exc. = 358.4 cu. yds.
 Emb. = 16.6 cu. yds.
 Emb. + 15% = 19.1 cu. yds.
 Waste = 369.3 cu. yds.



DETAIL OF INLET BASINS
 Note: All concrete, reinf. steel and excavation over 18'-6" from & included in basin price.
 Note: Inlet Manholes to have similar castings & top shall be the same as for Inlet Basins. The Manhole, be 3' Square, inside dimensions, and shall be corbelled in from a point 2' below top of walls to fit detail of Inlet Basins. Other details to be similar to Inlet Basin detail. All excavation, concrete & reinforcing steel over 18'-6" from & included in Inlet Manhole price. (Steps 15" c/s. included)
 Note: Manholes to be 3' Round or Square, inside dimension with 8" walls, 6" bottom and shall be corbelled in from a point 2' below top of walls to accommodate Std. 22" Cover Diameter 225" Manhole Casting. Suitable steps at 15" spacing to be provided. Excavation included in price of Manhole.