

Sta. 130+0
Build sht. 12"x40" enc. vit. pipe culvert. Inlet manhole on E. side. Place 12"x4" vit. T branch at 8' to R. of L. 1.8" x 1.1" M.H. in Roadway

Sta. 133+0
Build sht. 12"x40" enc. vit. pipe culvert. Inlet manhole on E. side. Place 12"x4" vit. T branch at 8' to R. of L. 1.8" x 1.1" M.H. in Roadway

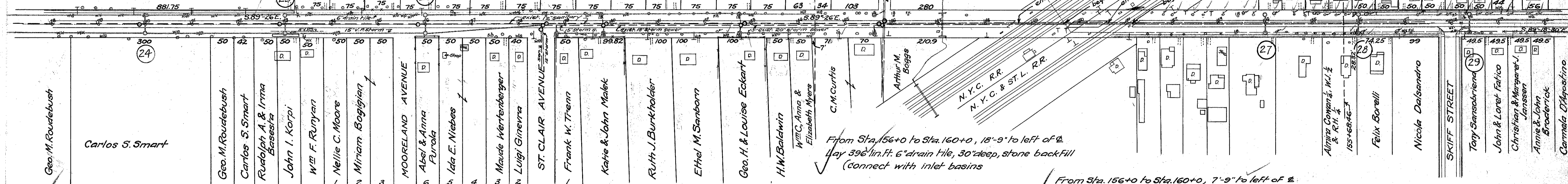
Sta. 136+0
Build sht. 12"x40" enc. vit. pipe culvert. Inlet manhole on E. side. Place 12"x4" vit. T branch at 8' to R. of L. 1.8" x 1.1" M.H. in Roadway

The Andrews Institute for Girls

Raise M.H. Tops to grade at following: 129+80E, 132+80E, 135+85E, 138+77R, 138+50R, 138+58L, 139+80R, 139+88L, 142+75R, 142+83L, 145+72L, 145+79R, 145+83L, 157+97E, 158+11R.

Reset F.H. at following: 130+93L, 135+86L, 139+59L.

Raise or lower Valve boxes to grade at: 130+93L, 135+86L, 139+59L, 142+23L, 157+09L, 158+39L, 158+06L, 158+20L, 159+73L.



From Sta. 138+82 to Sta. 144+35, 18'-9" to right of Φ
Lay 544 lin. ft. 6" drain tile, 30" deep, stone backfill (Connect with 1.8s)

From Sta. 128+0 to Sta. 144+35, 18'-9" to left of Φ
Lay 1614 lin. ft. 6" drain tile, 30" deep, stone backfill (connect with 1.8s)

From Sta. 156+0 to Sta. 160+0, 18'-9" to left of Φ
Lay 396 lin. ft. 6" drain tile, 30" deep, stone backfill (connect with inlet basins)

From Sta. 156+0 to Sta. 160+0, 7'-9" to left of Φ
Lay 398 lin. ft. 4" drain tile, 24" deep, stone backfill (connect with culverts)

From Sta. 156+0 to Sta. 160+0, 7'-9" to right of Φ
Lay 330 lin. ft. 4" drain tile, 24" deep, stone backfill (connect with culverts)

B.M. #19 Sta. 134+23
Spike in roof of 15" M.
19' to L of Φ
Elev. = 631.10

B.M. #20 Sta. 140+68
Spike in roof of 24" M.
19' to R of Φ
Elev. = 634.02

B.M. #21 Sta. 145+45
Spike in roof of 12" M.
21' to L of Φ
Elev. = 632.94

B.M. #22 Sta. 153+12
3" cap bolt to Fire hydrant
21' to R of Φ
Elev. = 635.77

B.M. #23 Sta. 159+18
Spike in roof of 20" M.
18' to L of Φ
Elev. = 636.46

