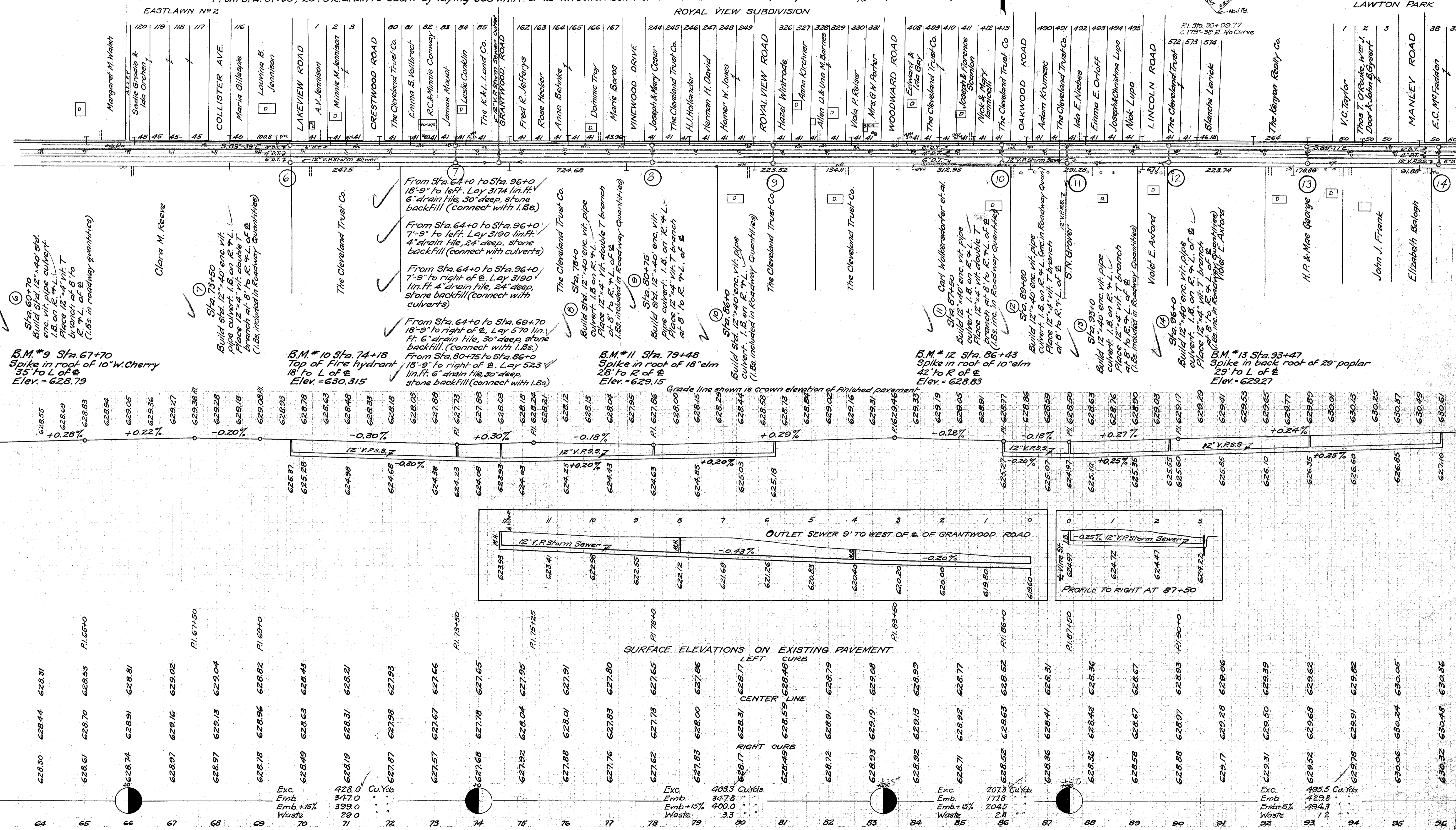


S.H. No. 604 Sec. Willowick, Willowick County

Reset F.H. at following sta: 71+22L, 74+18L, 77+31L, 80+13L, 82+70L, 86+16L, 89+05L, 94+88L.  
 Raise or lower Valve boxes at following sta: 65+69L, 67+75L, 69+56L, 71+22L, 74+18L, 77+31L, 80+13L, 82+70L, 86+16L, 86+64L, 89+05L, 94+88L.

From Sta. 69+70 to 80+75, 21' to R. of E, Lay 1098 lin. ft. of 12" Vit. Pipe Sewer.  
 From Sta. 86+0 to 96+0, 21' to R. of E, Lay 992 lin. ft. of 12" Vit. Pipe Sewer.  
 From Sta. 74+50, 20' to R. build outlet sewer to left on Grantwood Road by Laying 1222 lin. ft. of 12" Vit. pipe sewer (upper 40' to be encased) 1182 lin. ft. not encased.  
 3 manholes required. Build Std. headwall at outlet end, 1 cu. yd. 1:5 1/2 conc. (See profile below)  
 From Sta. 87+50, 20' to R. drain to south by laying 308 lin. ft. of 12" V.P. sewer. Build Std. headwall at outlet end, 1 cu. yd. 1:5 1/2 conc. (See profile below)

Raise Men. Cast to grade at Sta. 90+09.77E.



Sta. 69+70  
 Build Std. 12" x 40' sht. enc. vit. pipe culvert 1.8 on R. 9' L. Place 12" x 4" vit. T branch at 8' to R. 9' L. of E. (1.85 in roadway quantities)

Clara M. Reeve  
 Sta. 73+50  
 Build sht. 12" x 40' enc. vit. pipe culvert 1.8 on R. 9' L. Place 12" x 4" vit. double T branch at 8' to R. 9' L. of E. (1.85 included in Roadway Quantities)

B.M. #10 Sta. 74+18  
 Top of Fire hydrant 18' to L of E  
 Elev. = 630.315

From Sta. 64+0 to Sta. 96+0 18'-9" to left. Lay 3174 lin. ft. 6" drain tile, 30" deep, stone backfill (connect with 1.85).  
 From Sta. 64+0 to Sta. 96+0 7'-9" to left. Lay 3190 lin. ft. 4" drain tile, 24" deep, stone backfill (connect with culverts)  
 From Sta. 64+0 to Sta. 96+0 7'-9" to right of E. Lay 3190 lin. ft. 4" drain tile, 24" deep, stone backfill (connect with culverts)

The Cleveland Trust Co.  
 Sta. 78+0  
 Build sht. 12" x 40' enc. vit. pipe culvert 1.8 on R. 9' L. Place 12" x 4" vit. double T branch at 8' to R. 9' L. of E. (1.85 included in Roadway Quantities)

B.M. #11 Sta. 79+48  
 Spike in root of 18" elm 28' to R of E  
 Elev. = 629.15

From Sta. 64+0 to Sta. 69+70 18'-9" to right of E. Lay 570 lin. ft. 6" drain tile, 30" deep, stone backfill (connect with 1.85).  
 From Sta. 80+75 to Sta. 86+0 18'-9" to right of E. Lay 523 lin. ft. 6" drain tile, 30" deep, stone backfill (connect with 1.85)

B.M. #12 Sta. 86+43  
 Spike in root of 10" elm 42' to R of E  
 Elev. = 628.83

B.M. #13 Sta. 93+47  
 Spike in back root of 29" poplar 29' to L of E  
 Elev. = 629.27

Sta.	Grade Line (Crown)	Surface Elevations (Existing Pavement)	Exc. Emb. Waste
64	628.55	628.50, 628.44, 628.31	428.0
65	628.69	628.61, 628.70, 628.53	347.8
66	628.83	628.74, 628.91, 628.81	399.0
67	628.94	628.97, 629.16, 629.02	29.0
68	629.05	628.97, 629.13, 629.04	
69	629.36	628.78, 628.96, 628.82	
70	629.27	628.49, 628.63, 628.45	
71	629.38	628.19, 628.31, 628.21	
72	629.28	627.87, 627.98, 627.93	
73	629.18	627.57, 627.67, 627.66	
74	628.63	627.68, 627.78, 627.65	
75	628.48	627.92, 628.04, 627.95	
76	628.33	627.88, 628.01, 627.91	
77	628.18	627.76, 627.83, 627.80	
78	628.03	627.62, 627.73, 627.65	
79	627.88	627.83, 628.00, 627.86	
80	627.73	628.17, 628.31, 628.17	
81	627.58	628.49, 628.59, 628.49	
82	627.43	628.72, 628.91, 628.79	
83	627.28	628.93, 629.19, 629.08	
84	627.13	628.92, 629.13, 628.99	
85	626.98	628.71, 628.92, 628.77	
86	626.83	628.52, 628.63, 628.52	
87	626.68	628.36, 628.41, 628.31	
88	626.53	628.36, 628.42, 628.36	
89	626.38	628.58, 628.67, 628.67	
90	626.23	628.88, 628.97, 628.83	
91	626.08	629.17, 629.28, 629.06	
92	625.93	629.31, 629.50, 629.39	
93	625.78	629.52, 629.68, 629.62	
94	625.63	629.78, 629.91, 629.82	
95	625.48	630.06, 630.24, 630.05	
96	625.33	630.32, 630.48, 630.36	