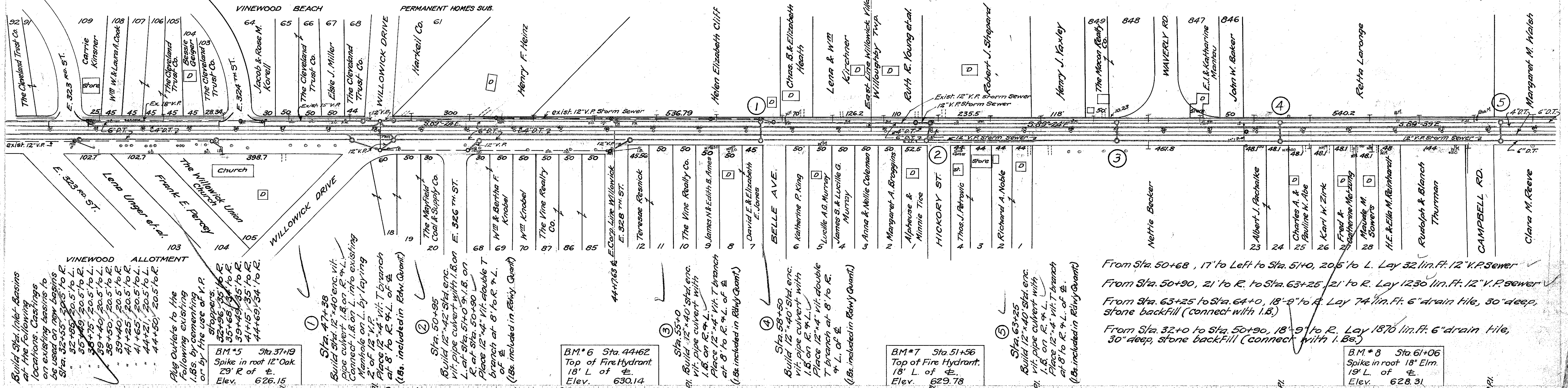
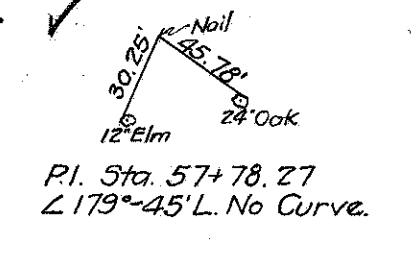


From M.H. at Sta. 32+49 23' to R. to I.B. at Sta. 32+55, 20.5' to R. Lay 4' of 12" V.P. sewer
 From M.H. at Sta. 32+80 18' to L. to I.B. at Sta. 32+85, 20.5' to L. Lay 4' of 12" V.P. sewer
 From M.H. at Sta. 35+44 23' to R. to I.B. at Sta. 35+49, 20.5' to R. Lay 4' of 12" V.P. sewer
 From I.B. at Sta. 38+50 20.5' to R. to M.H. at Sta. 39+10, 43' to R. Lay 64' of 12" V.P. sewer
 From I.B. at Sta. 38+75 20.5' to L. to M.H. at Sta. 39+10, 19' to L. Lay 34' of 12" V.P. sewer
 From M.H. at Sta. 39+10 19' to L. to I.B. at Sta. 39+40, 20.5' to L. Lay 30' of 12" V.P. sewer
 From M.H. at Sta. 39+10 43' to R. to I.B. at Sta. 39+40, 20.5' to R. Lay 36' of 12" V.P. sewer
 From M.H. at Sta. 41+03 43' to R. to I.B. at Sta. 41+25, 20.5' to R. Lay 30' of 12" V.P. sewer
 From M.H. at Sta. 43+98 41' to R. to I.B. at Sta. 44+50, 20.5' to R. Lay 56' of 12" V.P. sewer

From Sta. 52+85 to Sta. 64+0, 18'-9" to left of Φ
 Lay 2988 lin. ft. 6" drain tile, 30" deep, stone backfill (connect with I.B.s.)
 From Sta. 32+85 to Sta. 64+0, 7'-9" to left
 Lay 3016 lin. ft. 4" drain tile, 24" deep, stone backfill (connect with I.B.s. and culverts)
 From Sta. 32+0 to Sta. 64+0, 7'-9" to right
 Lay 3200 lin. ft. 4" drain tile, 24" deep, stone backfill (connect with I.B.s. and culverts)

Raise M.H. Tops to grade at following sta.: 32+80L, 36+2L, 36+7L.
 Reset Fire Hydrants at following: 44+62L, 47+90L, 51+96L, 56+85L, 62+49L.
 Raise or lower Valve boxes to grade at following: 33+80L, 38+37L, 41+75L, 43+94L, 44+62L, 47+90L, 51+96L, 56+85L, 62+49L.
 Raise Man. Casting to grade at Sta. 39+08.41 E, 57+78.27 E



Station	Left Curb	Center Line	Right Curb	Grade (%)	Notes
32	624.19	624.36	624.26	+0.40%	Exc. Emb. Waste
33	624.62	624.77	624.57	-0.17%	
34	625.11	625.17	625.01		
35	625.42	625.49	625.38		
36	625.84	626.03	625.95		
37	626.21	626.25	626.15	+0.30%	
38	626.19	626.28	626.17	-0.25%	
39	626.98	626.08	626.02	+0.34%	
40	626.26	626.30	626.19	-0.17%	
41	626.53	626.64	626.57	+0.32%	
42	626.93	627.05	626.94	+0.30%	
43	627.16	627.32	627.17		
44	627.49	627.63	627.49		
45	627.68	627.92	627.81		
46	627.94	628.09	627.95		
47	627.64	627.84	627.74		
48	627.43	627.55	627.44		
49	627.09	627.25	627.21		
50	626.82	626.95	626.80		
51	626.74	626.84	626.65		
52	627.03	627.17	627.07		
53	627.36	627.52	627.41		
54	627.31	627.44	627.36		
55	627.06	627.15	627.08		
56	626.79	626.89	626.80		
57	626.74	626.86	626.71		
58	626.65	626.74	626.61		
59	626.76	626.81	626.77		
60	627.01	627.08	627.09		
61	627.27	627.38	627.28		
62	627.66	627.78	627.66		
63	628.02	628.08	627.94		
64	628.30	628.44	628.25	+0.28%	

SURFACE ELEVATIONS ON EXISTING PAVEMENT.
LEFT CURB
CENTER LINE
RIGHT CURB

Exc. Emb. Waste
 556.3
 483.3
 555.0
 0.5
 Cu. Yds.
 4030
 3295
 3789
 241

Exc. Emb. Waste
 610.6
 212.5
 244.4
 366.2
 Cu. Yds.
 610.6
 177.3
 203.9
 150

Exc. Emb. Waste
 218.9
 177.3
 203.9
 150
 Cu. Yds.
 218.9
 177.3
 203.9
 150