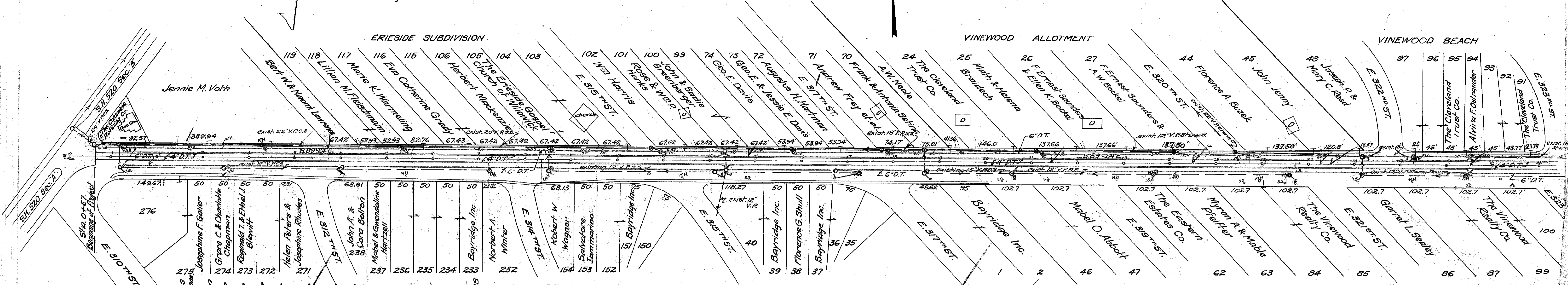


From M.H. at Sta. 1+20, 24' to R. to I.B. at Sta. 1+30, 20.5' to R. Lay 8' of 12" V.P. sewer
 From M.H. at Sta. 3+45, 26' to R. to I.B. at Sta. 3+54, 20.5' to R. Lay 8' of 12" V.P. sewer
 From M.H. at Sta. 5+94, 28' to R. to I.B. at Sta. 6+00, 20.5' to R. Lay 8' of 12" V.P. sewer
 From M.H. at Sta. 10+51, 23' to R. to I.B. at Sta. 10+60, 20.5' to R. Lay 8' of 12" V.P. sewer
 From M.H. at Sta. 14+08, 23' to R. to I.B. at Sta. 14+32, 20.5' to R. Lay 22' of 12" V.P. sewer
 From I.B. at Sta. 16+75, 20.5' to R. to M.H. at Sta. 17+19, 23' to R. Lay 42' of 12" V.P. sewer
 From M.H. at Sta. 18+62, 23' to R. to I.B. at Sta. 18+70, 20.5' to R. Lay 8' of 12" V.P. sewer
 From M.H. at Sta. 20+54, 23' to R. to I.B. at Sta. 20+65, 20.5' to R. Lay 8' of 12" V.P. sewer
 From M.H. at Sta. 23+55, 23' to R. to I.B. at Sta. 23+63, 20.5' to R. Lay 8' of 12" V.P. sewer
 From M.H. at Sta. 30+30, 23' to R. to I.B. at Sta. 30+50, 20.5' to R. Lay 18' of 12" V.P. sewer

Raise M.H. Tops to grade at following stations: 25+40 L., 28+15 L., 29+19 L.
 Raise or lower Valve Boxes to grade at following sta.: 2+69 L., 5+73 L., 14+97 L., 21+44 L., 24+49 L., 27+30 L., 27+56 L., 30+62 L.



B.M.#1 Sta. 3+35
Spike in roof of 10' oak
33' to L of ϕ
Elev. = 621.49

B.M.#2 Sta. 5+73
Top of Fire Hydrant
20' to L of ϕ
Elev. = 623.04

B.M.#2a Sta. 12+25
Spike in roof 12' poplar
35' to L of ϕ
Elev. = 621.12

B.M.#3 Sta. 21+44
Top of Fire Hydrant
20' to L of ϕ
Elev. = 625.17

B.M.#4 Sta. 30+84
Spike in back roof 26' elm
29' to L of ϕ
Elev. = 624.23

Build Stk. Inlet Basins at the following locations: Castings on existing new basins. Sta. 1+30 to R. 1+37, 1+54, 4+34, 6+00, 7+35, 10+60, 12+90, 14+32, 15+78, 16+75, 17+80, 18+70, 20+65, 25+70, 30+50. Total = 20 LBS.
 Build Inlet Manhole at Sta. 30+50 20.5' to L.
 Place low cone type castings on the following existing inlet basins: Sta. 6+06 on R. 9+36 on R. 10+50 on R. 14+30 on R. 16+73 on R. 18+70 on R. 28+08 on R. Total 6 LBS.
 Plug outlets to the following existing 1.85 piping or by placing V.P. stoppers. Sta. 0+75 on R. 20+62 on R. 23+60 on R.

From Sta. 1+27 to Sta. 32+0, 18'-9" to left, Lay 2960 lin. Ft. 6" drain tile, 30" deep, stone backfill (connect with I.B.s.)
 From Sta. 1+30 to Sta. 32+0, 18'-9" to right, Lay 3046 lin. Ft. 6" drain tile, 30" deep, stone backfill (connect with I.B.s.)
 From Sta. 1+27 to Sta. 32+0, 7'-9" to left, Lay 3100 lin. Ft. 4" drain tile, 24" deep, stone backfill (connect with I.B.s.)
 From Sta. 1+30 to Sta. 32+0, 7'-9" to right, Lay 3220 lin. Ft. 4" drain tile, 24" deep, stone backfill (connect with I.B.s.)

Station	Left Curve	Center Line	Right Curve	Grade (%)	Notes
617.93	617.61	617.93	617.59	+0.76%	
618.18	617.86	618.01	617.89	+0.58%	
618.56	618.69	618.69	618.65	+0.53%	
618.94	619.29	619.38	619.23	+0.465%	
619.23	619.47	619.59	619.41		
619.52	619.75	619.87	619.75		
619.78	619.90	620.06	619.90		
620.05	620.24	620.45	620.24		
620.31	620.78	620.91	620.78		
620.58	621.20	621.31	621.24		
620.81	621.68	621.83	621.60		
621.04	622.02	622.32	622.02		
621.27	622.77	622.82	622.77		
621.51	623.15	623.46	623.15		
621.74	623.58	623.88	623.58		
621.97	623.99	624.32	623.99		
622.20	624.15	624.62	624.15		
622.44	624.43	624.94	624.43		
622.31	624.54	625.00	624.54		
622.18	624.80	625.36	624.80		
622.05	624.94	625.57	624.94		
621.92	625.07	625.71	625.07		
621.79	625.23	625.85	625.23		
621.66	625.36	625.99	625.36		
621.53	625.51	626.13	625.53		
621.40	625.65	626.27	625.65		
621.27	625.80	626.41	625.80		
621.14	625.94	626.55	625.94		
621.08	626.08	626.69	626.08		
621.24	626.22	626.83	626.24		
621.39	626.36	626.97	626.39		
621.53	626.50	627.11	626.53		
621.67	626.64	627.25	626.67		
621.83	626.78	627.39	626.83		
621.67	626.92	627.53	626.67		
622.16	627.06	627.67	627.16		
622.00	627.20	627.81	627.00		
622.49	627.34	627.95	627.49		
622.35	627.48	628.09	627.35		
622.78	627.62	628.23	627.78		
622.64	627.76	628.37	627.64		
623.07	627.90	628.51	623.07		
622.93	628.04	628.65	622.93		
623.36	628.18	628.79	623.36		
623.22	628.32	628.93	623.22		
623.65	628.46	629.07	623.65		
623.51	628.60	629.21	623.51		
623.94	628.74	629.35	623.94		
623.80	628.88	629.49	623.80		
624.23	629.02	629.63	624.23		
624.30	629.16	629.77	624.30		
624.34	629.30	629.91	624.34		
624.43	629.44	630.05	624.43		
624.52	629.58	630.19	624.52		
624.61	629.72	630.33	624.61		
624.70	629.86	630.47	624.70		
624.43	629.99	630.61	624.43		
624.54	630.13	630.75	624.54		
624.30	630.27	630.89	624.30		
624.25	630.41	631.03	624.25		
624.17	630.55	631.17	624.17		
624.08	630.69	631.31	624.08		
624.00	630.83	631.45	624.00		
624.20	630.97	631.59	624.20		
624.40	631.11	631.73	624.40		
624.60	631.25	631.87	624.60		

Grade line shown is crown elevation of Finished pavement

SURFACE ELEVATIONS ON EXISTING PAVEMENT

Exc. Emb. +15% Waste
481.3 Cu. Yds.
206.6
329.6
151.7

Exc. Emb. +15% Waste
164.1 Cu. Yds.
125.2
144.0
20.1

Exc. Emb. +15% Waste
584.6 Cu. Yds.
493.0
572.7
11.9

Exc. Emb. +15% Waste
171.2 Cu. Yds.
145.1
166.9
4.3