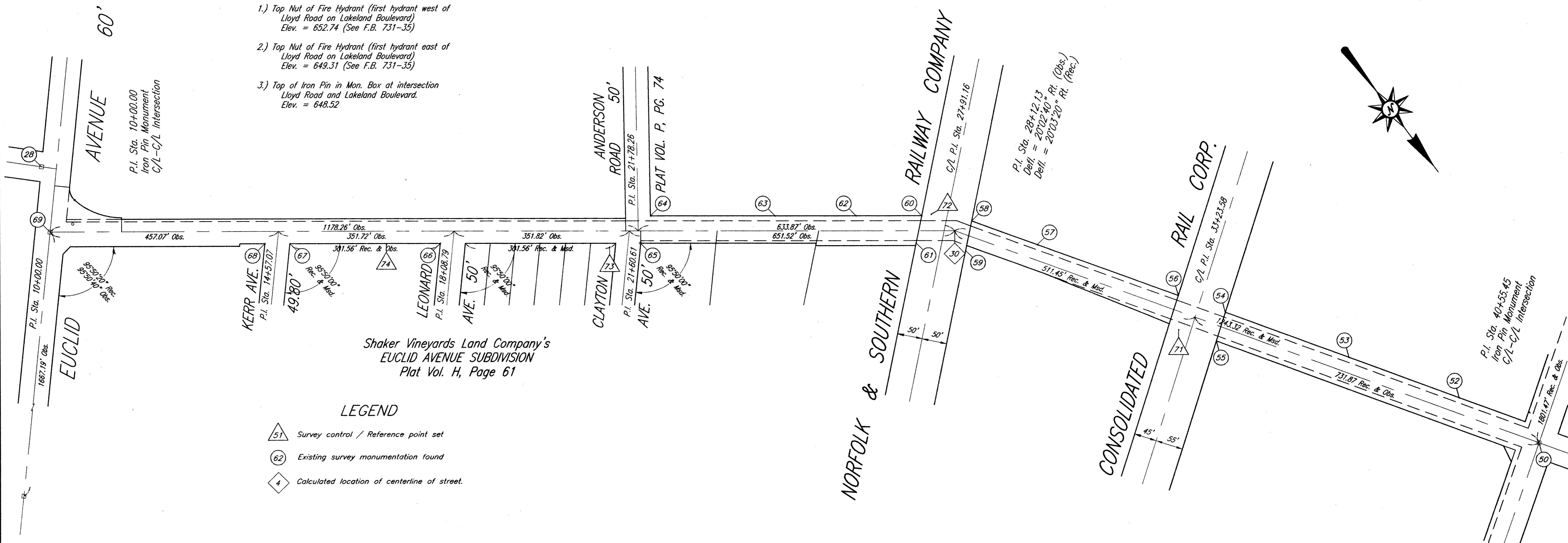


30	709058.4165	2247416.7440		28+12.13	0.00'	Iron Pin in Mon. Box
50	710106.87938	2246748.48500		40+55.45	0.00'	Iron Pin in Mon. Box
51	709114.44666	2245245.03182				Iron Pin Found
52	709938.53595	2246820.36320		38+74.86	29.87' Lt.	Iron Pin Found
53	709740.68958	2246946.36357		36+40.30	29.95' Lt.	Iron Pin Found
54	709519.04745	2247087.81312		33+77.36	29.80' Lt.	Iron Pin Found
55	709553.09938	2247136.52707		33+79.90	29.58' Rt.	Iron Pin Found
56	709434.25746	2247141.50424		32+77.00	30.10' Lt.	Iron Pin Found
57	709181.31152	2247302.78054		29+77.02	30.05' Lt.	Iron Pin Found
58	709063.68711	2247377.76742		28+37.52	30.04' Lt.	Iron Pin Found
59	709103.45027	2247423.68028		28+46.38	30.05' Rt.	Iron Pin Found
60	708994.59227	2247450.76397		27+46.32	29.99' Lt.	Iron Pin Found
61	709030.99358	2247493.17442		27+34.78	24.70' Rt.	Iron Pin Found
62	708914.59325	2247555.17192		26+14.78	30.03' Lt.	Iron Pin Found
63	708816.15853	2247683.82916		24+52.79	29.96' Lt.	Iron Pin Found
64	708664.18413	2247882.29622		22+02.82	29.96' Lt.	Iron Pin Found
65	708695.25305	2247931.73887		21+82.45	24.77' Rt.	Drill Hole Found
66	708451.21792	2248250.32972		17+81.14	24.71' Rt.	Iron Pipe Found
67	708268.01657	2248489.86006		14+79.58	24.89' Rt.	Iron Pipe Found
68	708237.63738	2248529.41315		14+29.71	24.81' Rt.	Iron Pipe Found
69	707956.68529	2248855.49517		10+00.00	0.00'	Iron Pin in Mon. Box
70	710047.57437	2246726.61320	649.42	40+17.20	50.32' Lt.	CT Ref. Pin Set
71	709489.62769	2247183.29341	657.02	33+01.24	34.90' Rt.	CT Ref. Pin Set
72	709003.68501	2247434.02406	657.21	27+65.14	32.95' Lt.	CT Ref. Pin Set
73	708663.93119	2247985.39591	654.70	21+20.81	32.52' Rt.	CT Ref. Pin Set
74	708387.57293	2248338.26091	660.65	16+72.63	27.64' Rt.	CT Ref. Pin Set
75	707971.35973	2248809.88119	691.87	10+45.14	16.08' Lt.	Ref. Drill Hole Set
76	709623.36587	2246061.55159				

BENCHMARKS

- 1.) Top Nut of Fire Hydrant (first hydrant west of Lloyd Road on Lakeland Boulevard)
Elev. = 652.74 (See F.B. 731-35)
- 2.) Top Nut of Fire Hydrant (first hydrant east of Lloyd Road on Lakeland Boulevard)
Elev. = 649.31 (See F.B. 731-35)
- 3.) Top of Iron Pin in Mon. Box at intersection Lloyd Road and Lakeland Boulevard.
Elev. = 648.52



LEGEND

- △ 51 Survey control / Reference point set
- 62 Existing survey monumentation found
- ◇ 4 Calculated location of centerline of street.

CT Consultants, Inc.
Engineers • Architects • Planners
Willoughby • Mentor • Columbus • North Canton • Youngstown



REV. NO.	DESCRIPTION	DATE	BY	CHK'D.

LLOYD ROAD IMPROVEMENTS
CITY OF WICKLIFFE, LAKE COUNTY, OHIO

DATE: 2-2-00
DRAWN BY: T.P.H.
CHECKED BY: P.J.F.
APPROVED BY: T.P.H.
F.B. No. 1140, PG. 1-32

SURVEY CONTROL

SCALE	
1"=100'	
CONTRACT NO.	
98367	
SHEET NO.	OF
20	20