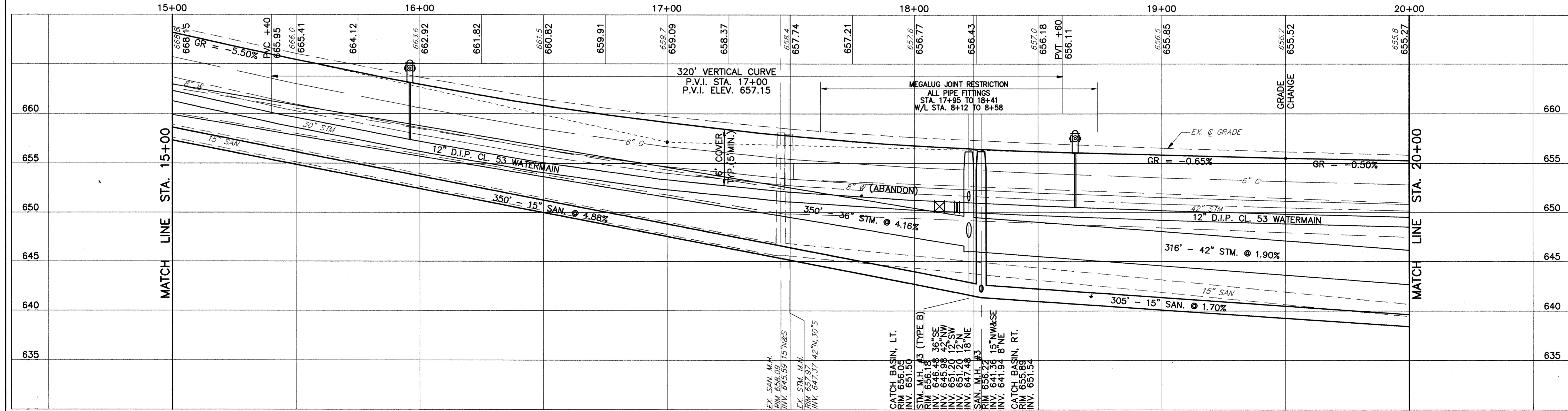
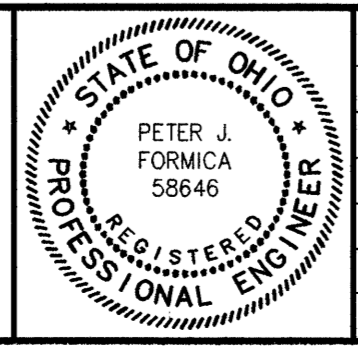


- LEGEND**
- 8" DRIVE REPLACEMENT
 - 6" DRIVE REPLACEMENT
 - 4" CONC. WALK REPLACEMENT
 - CURB RAMP REPLACEMENT
 - M.H. - ADJUST TO GRADE
 - M.H. - PROPOSED SANITARY
 - M.H. - PROPOSED STORM
 - I.B. - PROPOSED
 - I.B. - ADJUST TO GRADE



CT Consultants, Inc.
 Engineers • Architects • Planners
 Willoughby • Mentor • Columbus • North Canton • Youngstown



REV. NO.	DESCRIPTION	DATE	BY	CH'K'D.

LLOYD ROAD IMPROVEMENTS
 CITY OF WICKLIFFE, LAKE COUNTY, OHIO

DATE: 2-15-00
 DRAWN BY: M.F.L.
 CHECKED BY: P.J.F.
 APPROVED BY: P.J.F.
 F.B. No. 1140 Pg. 1-32

PLAN & PROFILE LLOYD ROAD
 STA. 15+00 TO 20+00

SCALE	
HORIZ.	1"=20'
VERT.	1"=5'
CONTRACT No.	
98367	
SHEET NO.	OF
4	20