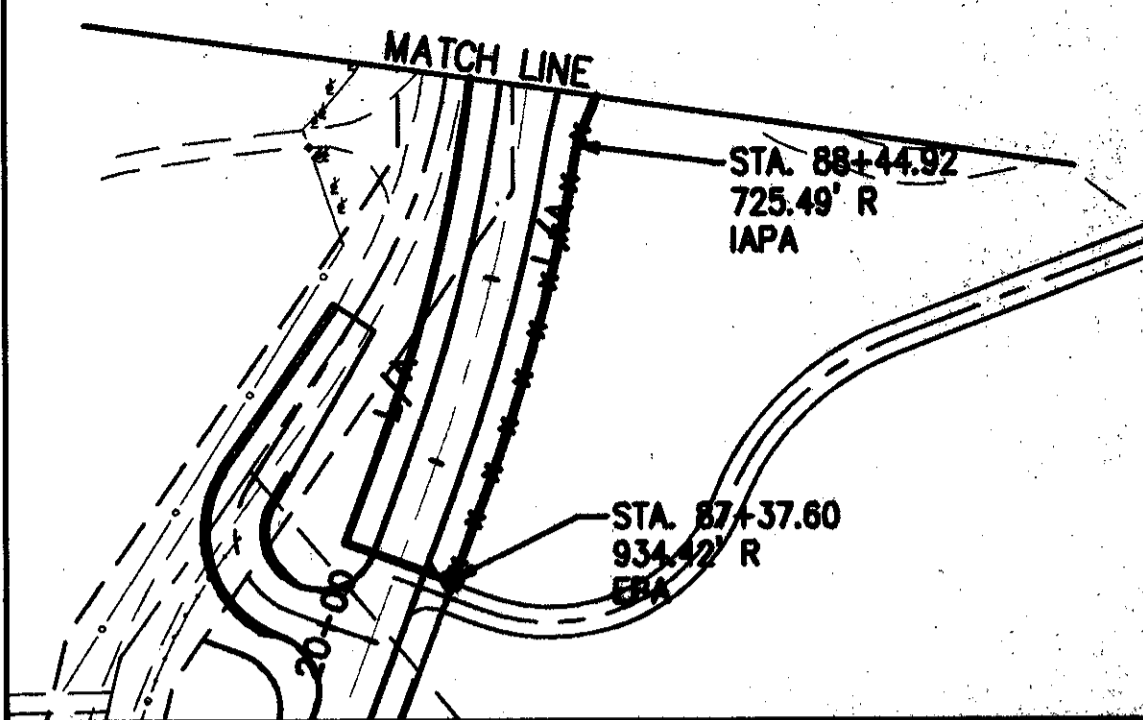
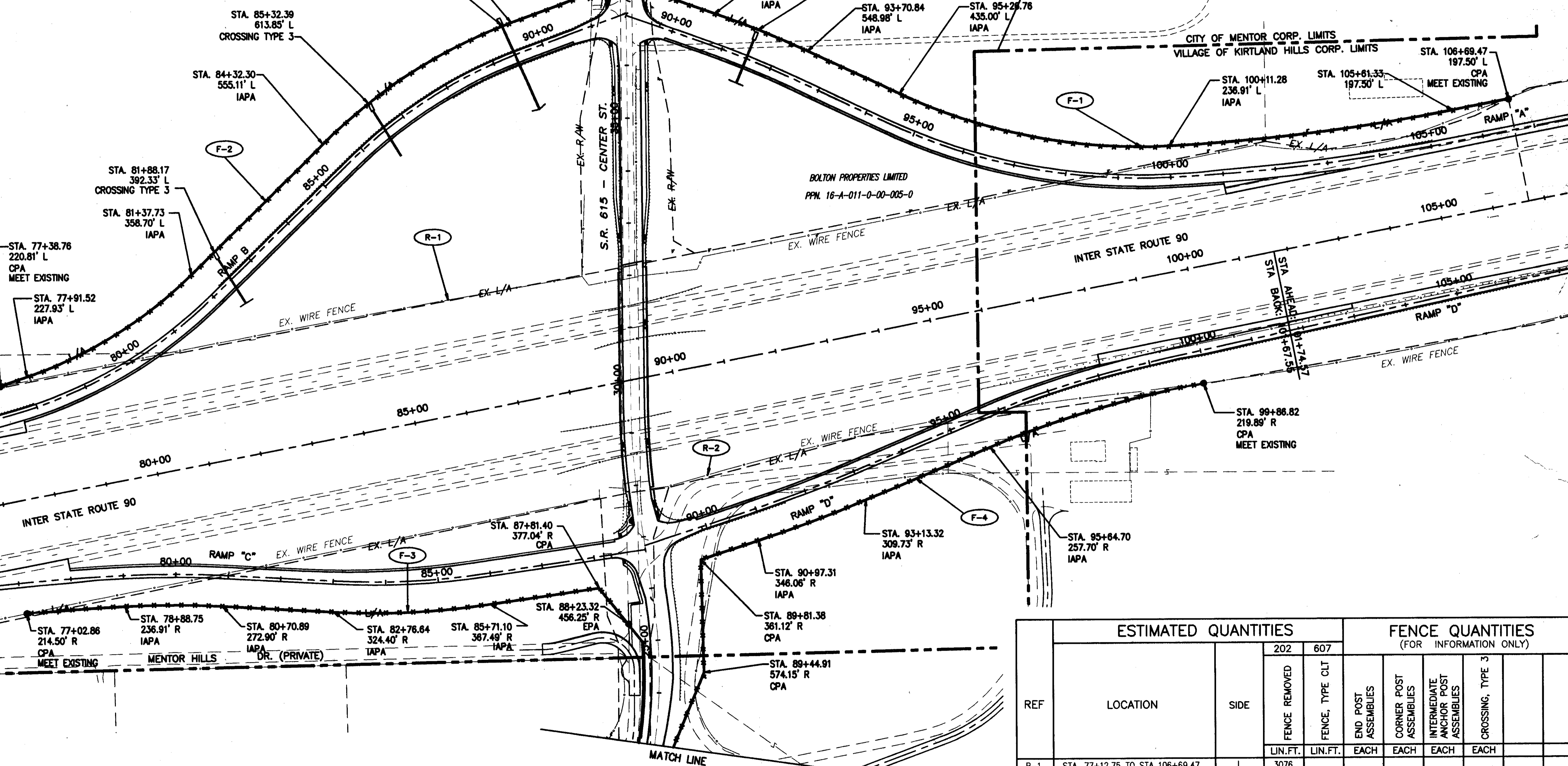


LEGEND
 EPA - END POST ASSEMBLY
 CPA - CORNER POST ASSEMBLY
 IAPA - INTERMEDIATE ANCHOR POST ASSEMBLY

1' TYPICAL L/A

TYPICAL FENCE LOCATION

DAVID Z. NORTON COMPANY
 PPN. 16-A-001-0-00-012-0



COPYRIGHT - DATE: 10-16-01 08:26 CT CONSULTANTS, INC. H:\CT\971725\SDSK\Fence01.dwg

FENCE PLAN STA. 77+12.75 TO STA 106+69.47

LAK-IR90/SR615-9.26/1.51

REF	LOCATION	SIDE	ESTIMATED QUANTITIES		FENCE QUANTITIES (FOR INFORMATION ONLY)			
			202	607	END POST ASSEMBLIES	CORNER POST ASSEMBLIES	INTERMEDIATE ANCHOR POST ASSEMBLIES	CROSSING, TYPE 3
			FENCE REMOVED	FENCE, TYPE CLT				
LIN.FT.	LIN.FT.	EACH	EACH	EACH	EACH			
R-1	STA. 77+12.75 TO STA 106+69.47	L	3076					
R-2	STA. 77+12.75 TO STA 106+69.47	R	2190					
F-1	STA. 91+64.52 TO STA 106+69.47	L		2067	1	3	5	1
F-2	STA. 77+38.76 TO STA 90+90.80	L		1806	1	3	5	3
F-3	STA. 77+02.86 TO STA 88+23.32	R		1183	1	2	4	
F-4	STA. 87+81.80 TO STA 99+86.82	R		1650	1	4	2	
SHEET TOTAL			5266	6706	4	12	16	4