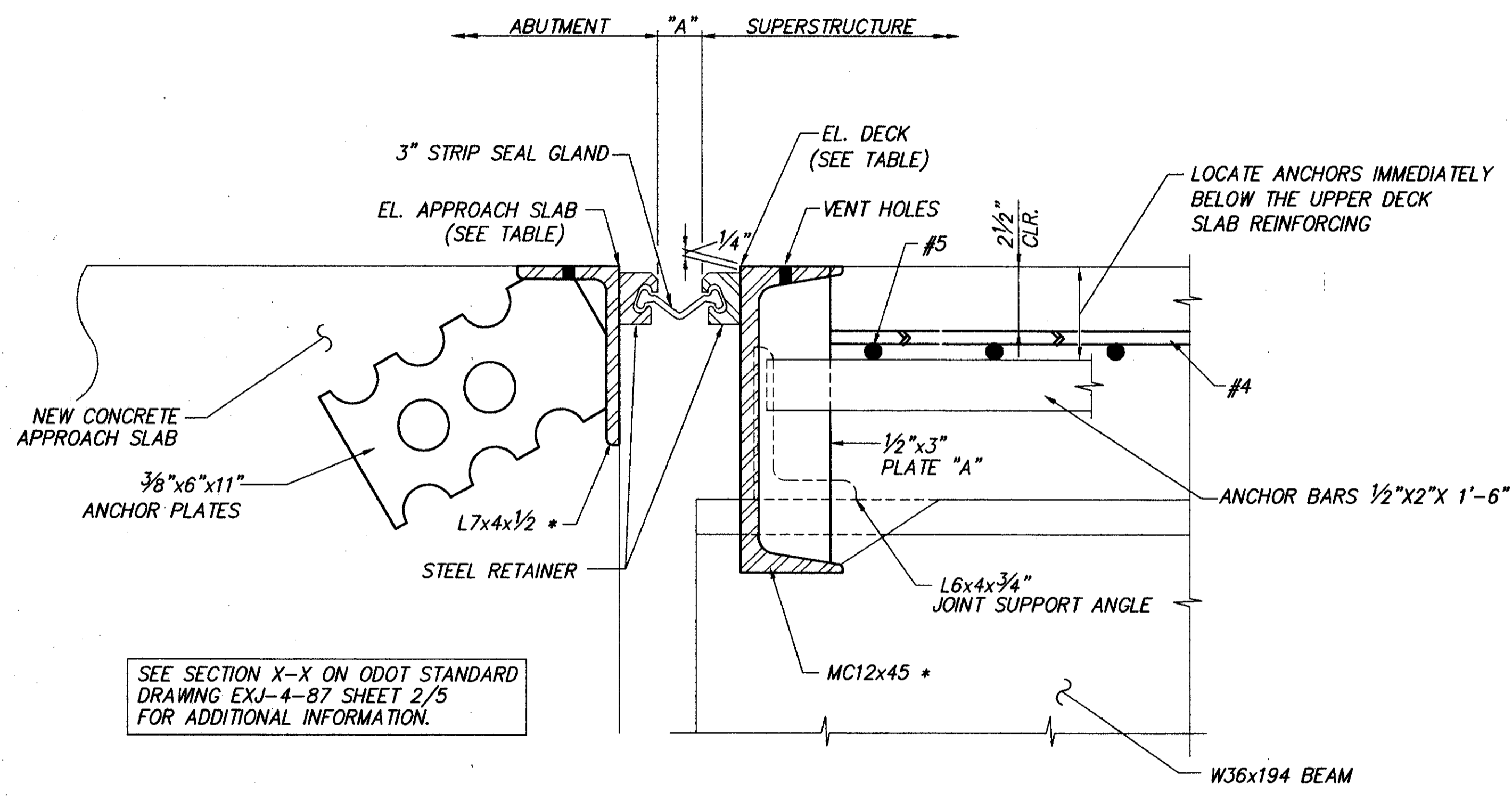


JOINT SETTING TABLE							
TEMPERATURE (° F)	30°	40°	50°	60°	70°	80°	90°
"A" (INCHES AT REAR ABUTMENT)	2	1 3/4	1 1/6	1 1/2	1 1/2	1 1/4	1 1/8
"A" (INCHES AT FORWARD ABUTMENT)	2	1 3/4	1 1/6	1 1/2	1 1/2	1 1/4	1 1/8

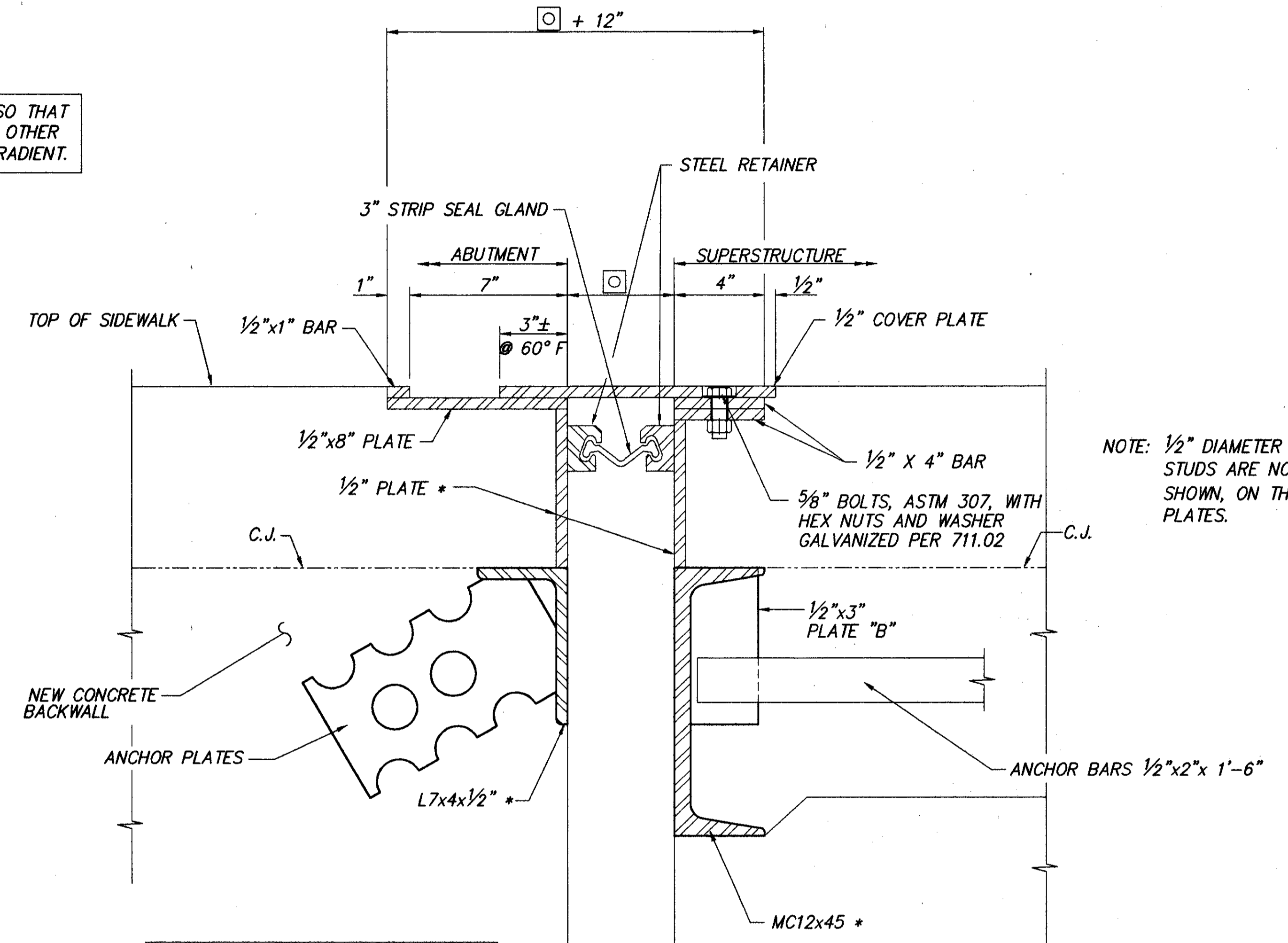
⊖ - THIS DIMENSION IS THE SUM OF
(2 x STEEL RETAINER WIDTH + DIMENSION "A")

* THE JOINT ASSEMBLY SHALL BE PLACED SO THAT JOINT ARMOR REMAIN PARALLEL TO EACH OTHER AND PERPENDICULAR TO THE ROADWAY GRADIENT.



SEE SECTION X-X ON ODOT STANDARD DRAWING EXJ-4-87 SHEET 2/5 FOR ADDITIONAL INFORMATION.

STRIP SEAL EXPANSION JOINT DETAIL
(AT BOTH ABUTMENTS)



SEE SECTION Y-Y ON ODOT STANDARD DRAWING EXJ-4-87 SHEET 4/5 FOR ADDITIONAL INFORMATION.

STRIP SEAL EXPANSION JOINT DETAIL @ SIDEWALK
(AT BOTH ABUTMENTS)

NOTE: 1/2" DIAMETER STUDS ARE NOT SHOWN, ON THE PLATES.

- NOTES:
- FOR JOINT PLAN VIEWS, ADDITIONAL SECTIONS AND NOTES, SEE EXJ-4-87 SHEETS FOR 3 OF 5 THRU 5 OF 5.
 - INSTALLATION OF SEAL: DURING INSTALLATION OF THE SUPPORT/ARMOR FOR THE SUPERSTRUCTURE SIDE OF THE EXPANSION JOINT SEAL, THE SEATING OF BEAMS ON BEARINGS SHALL BE CAREFULLY OBSERVED TO ASSURE THAT POSITIVE BEARING IS MAINTAINED. PROPER ELEVATION OF THE SUPPORT/ARMOR SHALL BE ACHIEVED BY ADJUSTING THE CONNECTION ANGLES AND BOLTS BETWEEN BEAM AND EXPANSION JOINT.
 - THE 3" STRIP SEAL GLAND SHALL BE FURNISHED IN ONE CONTINUOUS PIECE.
 - NOTATION: EL.-ELEVATION; C.J.-CONSTRUCTION JOINT; A.S.-APPROACH SLAB.

ELEVATION TABLE - TOP OF JOINT ARMOR				
POINT	STATION REAR A.S.	STATION REAR DECK	STATION FORWARD DECK	STATION FORWARD A.S.
LEFT CURB LINE	28+03.94 804.36	28+04.28 804.37	31+93.07 802.87	31+93.40 802.86
PROFILE GRADE & CROWN POINT	28+05.11 804.60	28+05.48 804.61	31+95.69 803.00	31+96.02 802.99
RIGHT CURB LINE	28+07.33 804.23	28+07.68 804.23	32+00.56 802.43	32+00.89 802.41