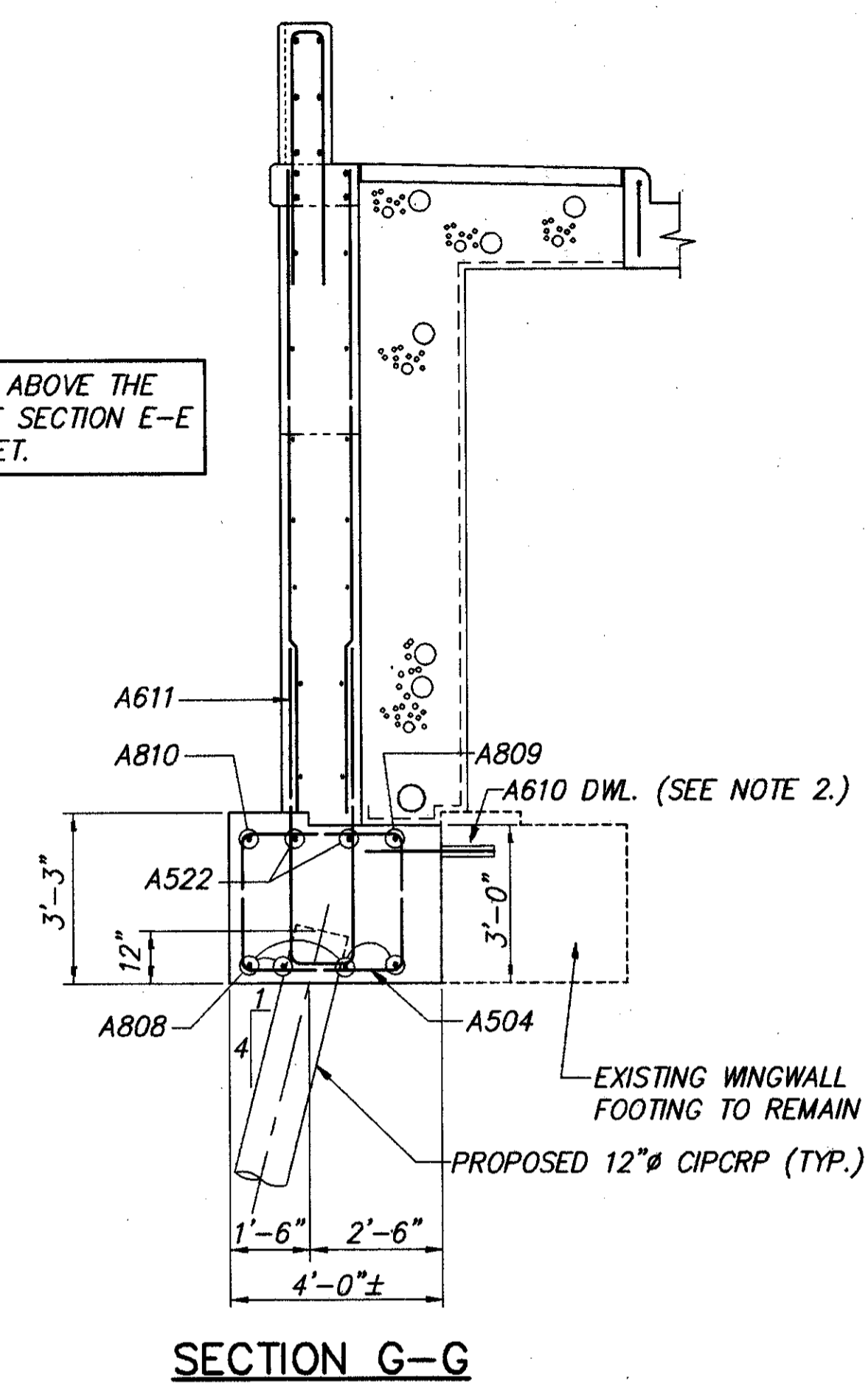
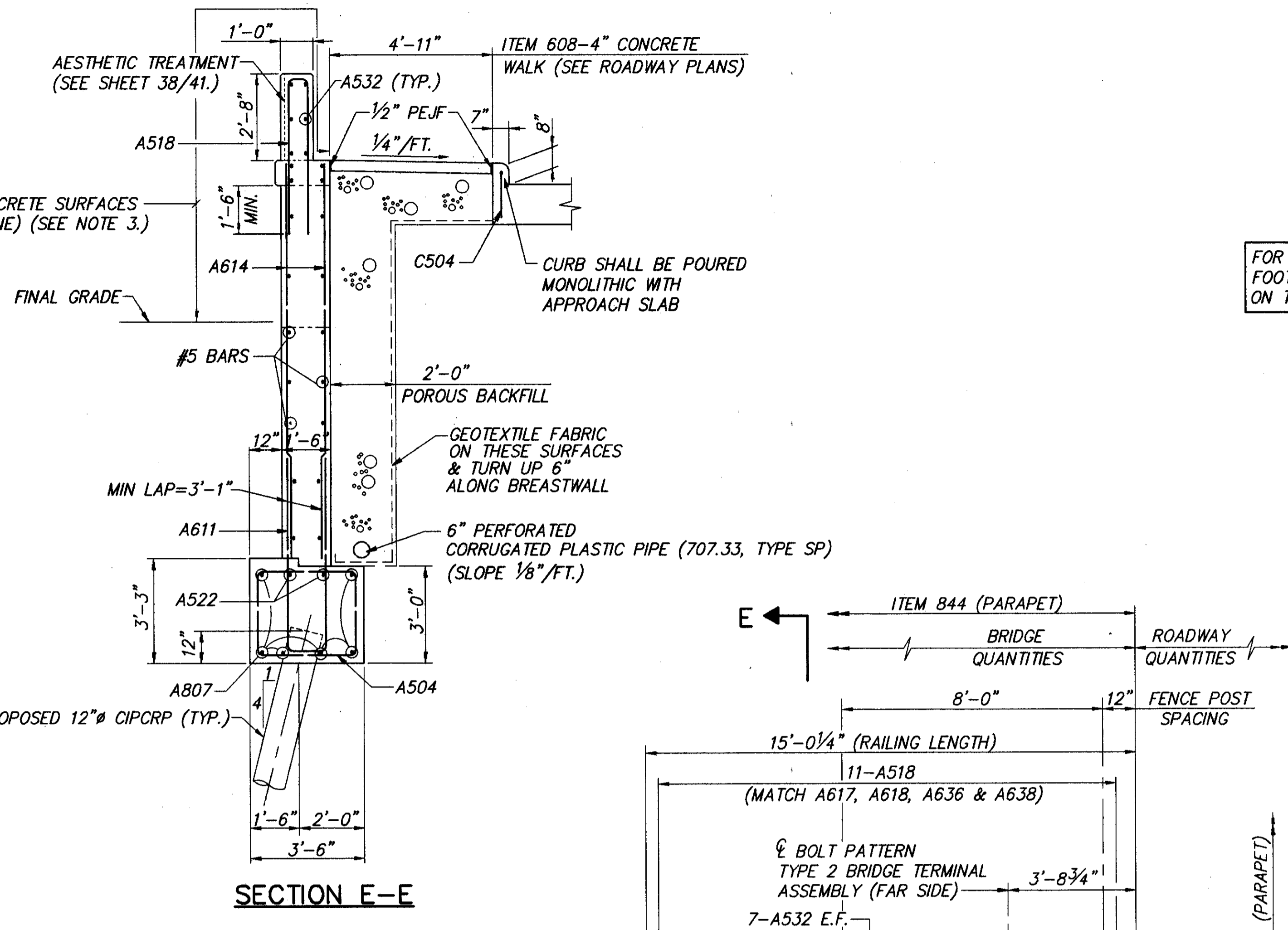


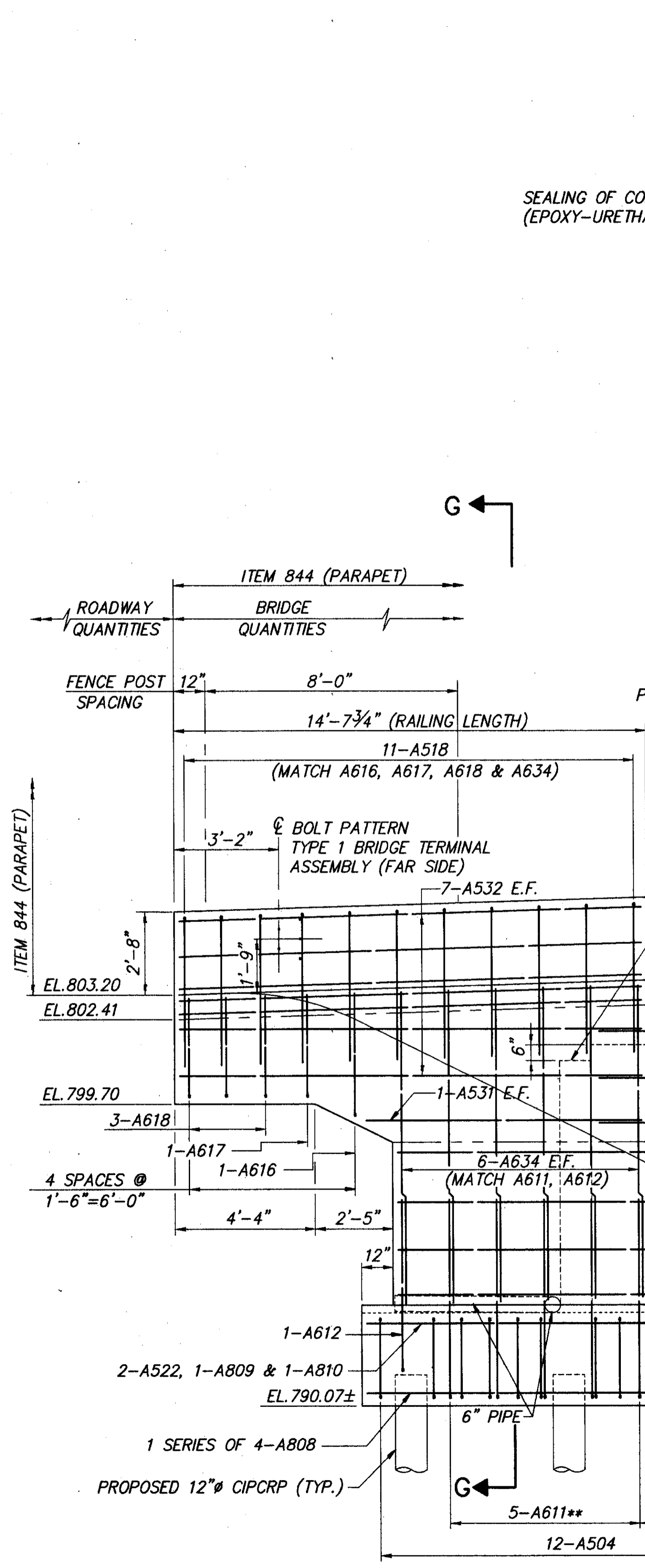
FOR DETAILS ABOVE THE FOOTING, SEE SECTION E-E ON THIS SHEET.



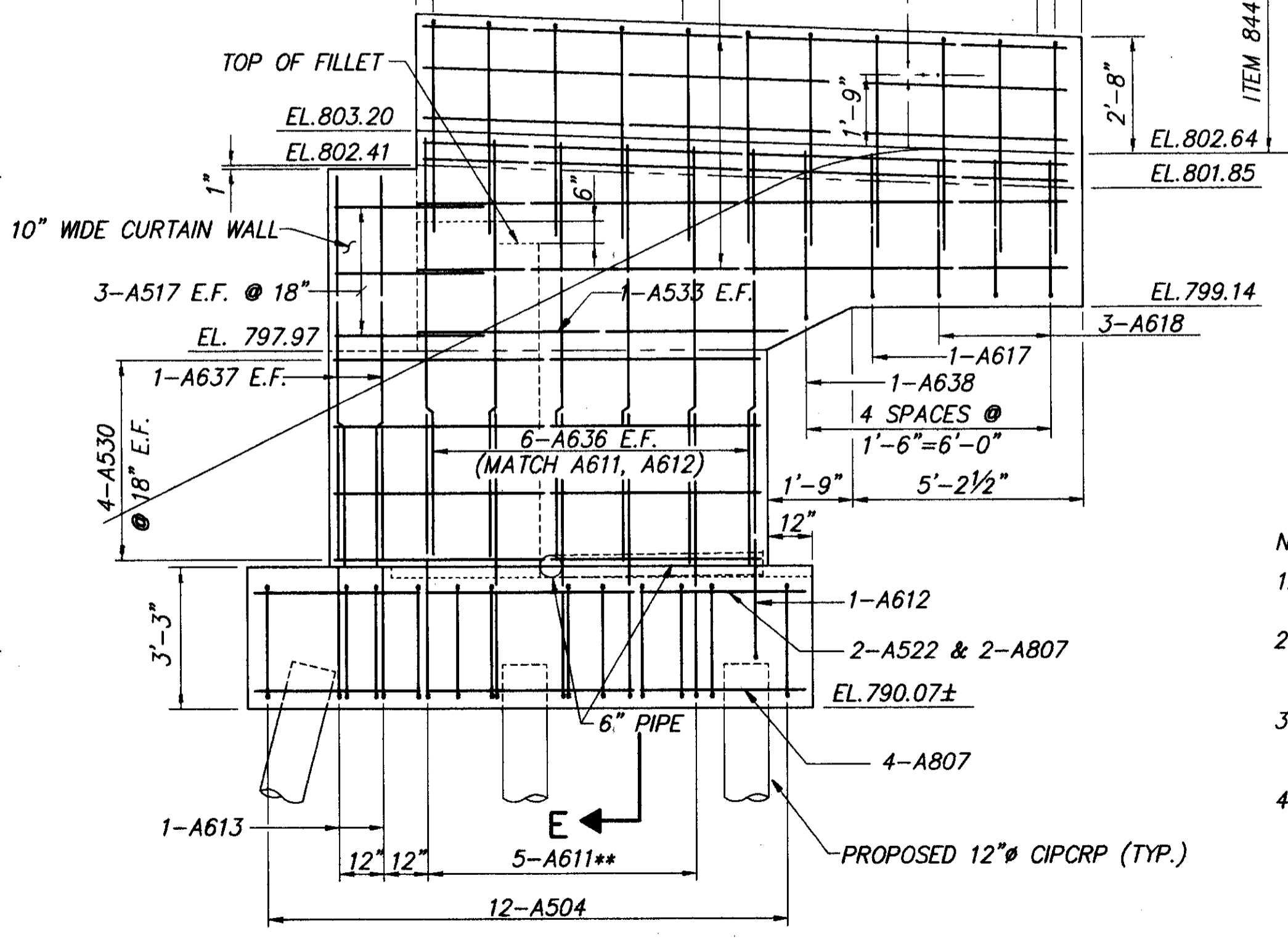
SECTION G-G



SECTION E-E



LEFT FORWARD WINGWALL



RIGHT FORWARD WINGWALL

** - BARS SHALL BE EQUALLY SPACED BETWEEN PILES AT 18" MAXIMUM.

- NOTES:
- FOR FORWARD ABUTMENT PLAN AND ELEVATION, SEE SHEET 19/41.
 - SEE "DOWEL HOLES" GENERAL NOTE ON SHEET 4/41 FOR INSTALLATION AND PAYMENT INFORMATION.
 - THE SECOND SEALING COAT ONLY SHALL BE TINTED TO FEDERAL COLOR STANDARD 59B-25630 SEMI-GLOSS.
 - NOTATION: EL.-ELEVATION; E.F.-EACH FACE; TYP.-TYPICAL CIPCRP-CAST-IN-PLACE REINFORCED CONCRETE PILES; SPA.-SPACES; PEJF-PREFORMED EXPANSION JOINT FILLER.