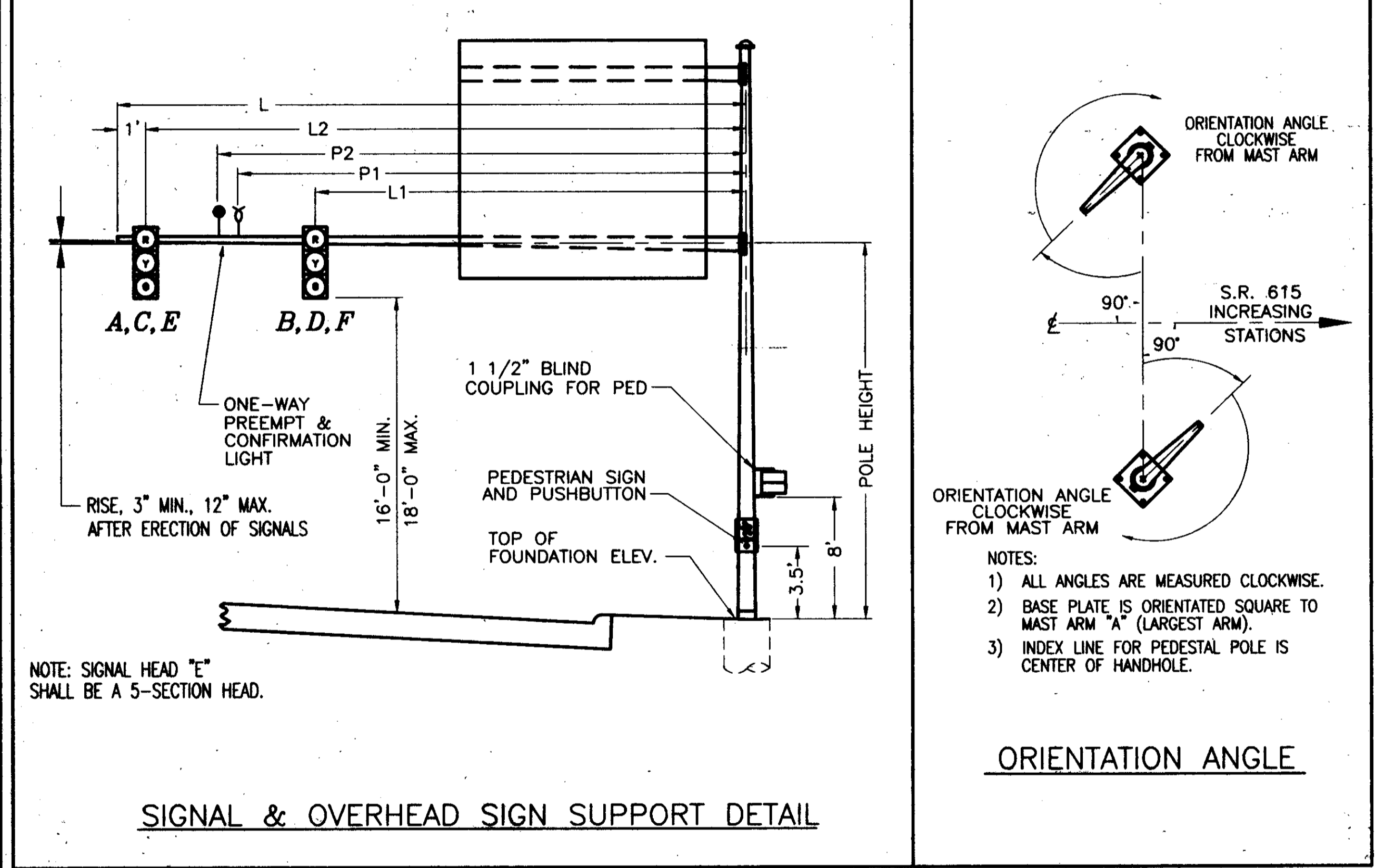
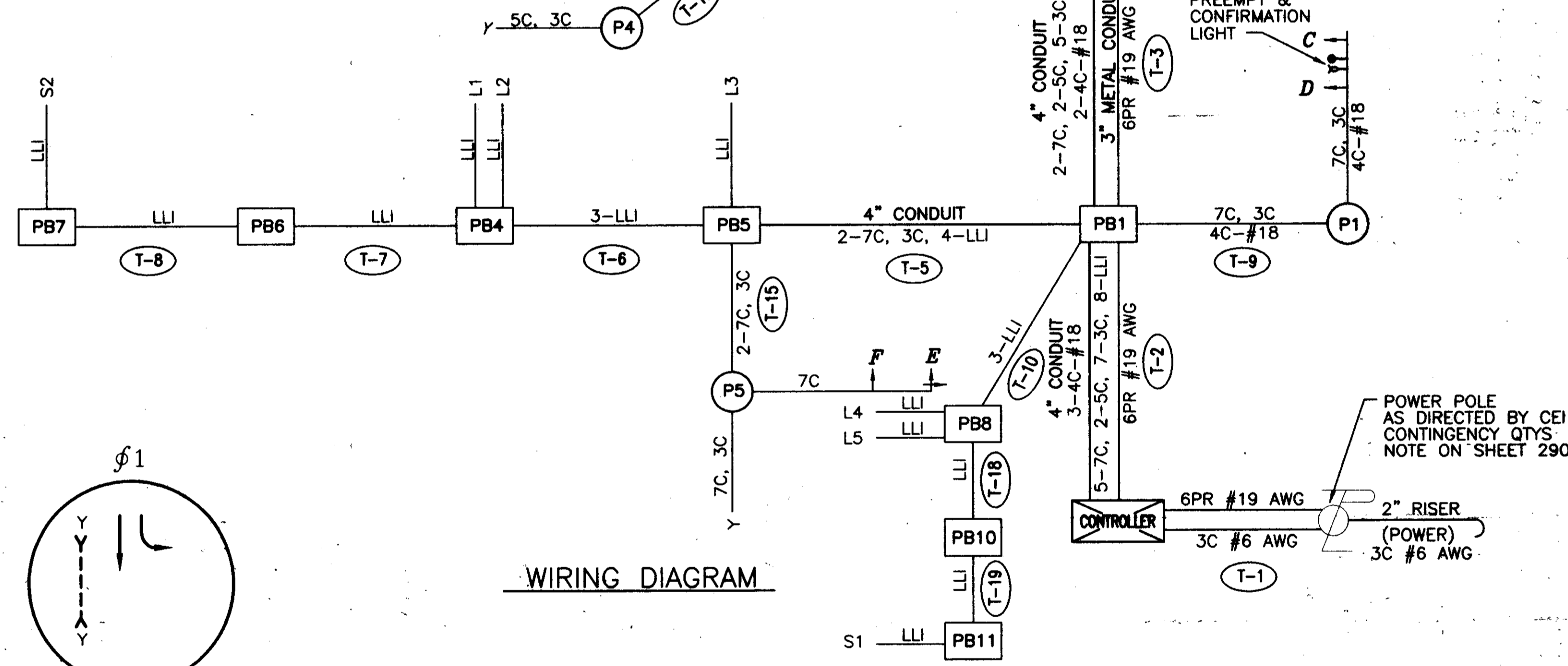


COMBINATION POLE		LOCATION		SUPPORT TYPE & DESIGN NUMBER		POLE HEIGHT (Feet)	TOP OF FOUNDATION ELEV.	MAST ARM		SIGNALS			SIGNS		PREEMPT		ORIENTATION ANGLE FROM MAST ARM "A" (DEGREES)											
NO	P1	STATION	OFFSET	PEDESTAL TC-12.30	TC-81.20			LENGTH "L"	DESIGN	LENGTH "L"	DESIGN	L1	L2	L3	S1	S2	P1 (1-WAY PREEMPT)	P2 (CONFIRMATION LIGHT)	MAST ARM "A" ORIENTATION ANGLE (DEGREES)	MAST ARM "B" ORIENTATION ANGLE (DEGREES)	HANDHOLE (PED POLE ANGLE REFERENCE)	PEDESTRIAN SIGNALS	PEDESTRIAN PUSHBUTTON	POWER SERV. 1-1/2" BLIND W/IF COUPLING 3" FROM BASE	CABLE ENTRANCE	LUMINAIRE BRACKET	2" CONDUIT ELL.	2" CAPPED CONDUIT ELL. (FOR FUTURE USE)
NO	P1	26+60	43' RT	-	3	22.5'	MATCH EXIST.	33'	3	-	22'	32'	-	-	-	27'	28'	90°	-	90°	-	-	-	-	-	-	270°	-
*YES	P2	27+32	38' RT	-	5	24.5'	-	32'	4	-	21'	31'	-	-	-	26'	27'	0°	-	180°	90°	90°	-	-	-	-	290°	-
NO	P3	27+24	22' LT	YES	-	8'	MATCH EXIST.	-	-	-	-	-	-	-	-	-	-	-	-	180°	90°	90°	-	-	-	-	270°	-
NO	P4	27+13	40' LT	YES	-	8'	MATCH EXIST.	-	-	-	-	-	-	-	-	-	-	-	-	270°	270°	270°	-	-	-	-	45°	-
NO	P5	26+48	45' LT	-	12	22.5'	MATCH EXIST.	46'	12	-	35	45	-	-	-	-	0°	-	90°	180°	0°	-	-	-	-	315°	-	

* SIGNAL AND OVERHEAD SIGN SUPPORT. SEE ELEVATION VIEW 26 FOR DETAIL.



NOTES:
 ALL CONDUIT SHALL BE 2", UNLESS NOTED OTHERWISE.
 A SEPARATE 2" CONDUIT SHALL BE PROVIDED FOR POWER.
 PREEMPT - 4C-#18
 Y - PREEMPT DETECTOR
 T - CONFIRMATION LIGHT
 (T-00) - SUBSUMMARY SIGNAL REFERENCE NO.



FUNCTION	φ1	φ2	φ3	φ4	φ5	φ6	φ7	φ8
INITIAL GREEN	5.0	20.0	-	15.0	-	-	-	-
MINIMUM GREEN	-	-	-	-	-	-	-	-
VEHICLE EXTENSION	3.0	-	-	4.5	-	-	-	-
MAXIMUM GREEN	12	40	-	30	-	-	-	-
PEDESTRIAN WALK	-	7.0	-	7.0	-	-	-	-
PEDESTRIAN CLEARANCE	-	11.0	-	12.0	-	-	-	-
VEHICLE YELLOW CLEARANCE	3.5	3.5	-	4.8	-	-	-	-
VEHICLE ALL RED CLEARANCE	1.2	2.5	-	2.5	-	-	-	-
RECALL	OFF	MIN	-	OFF	-	-	-	-
MEMORY	N.L.	ON	-	N.L.	-	-	-	-

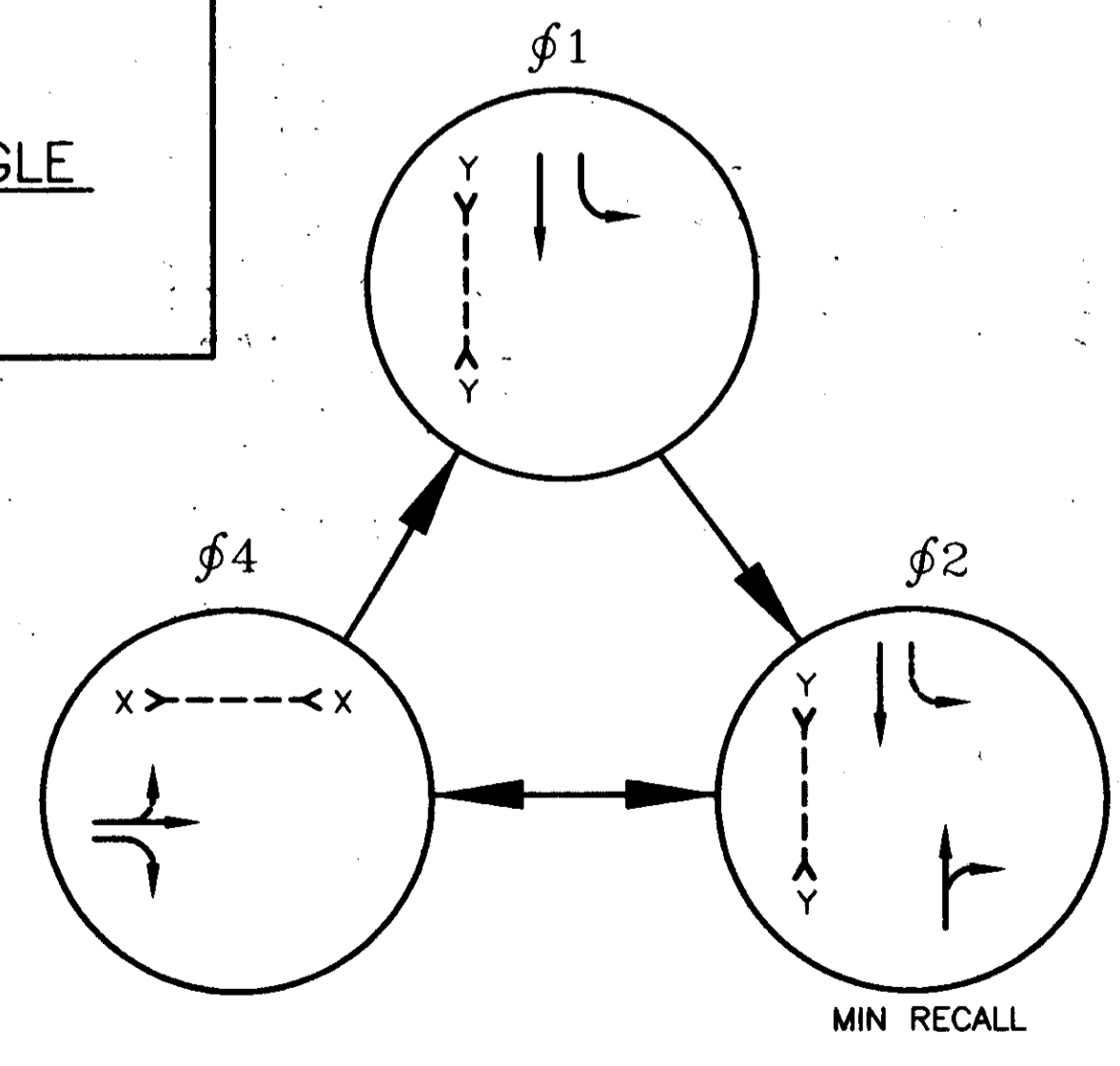
SIGNAL TIMING CHART

TO OVERHEAD SIGN LIGHTING CONDUIT RUNS.

CONSTRUCT 3" METAL CONDUIT ACROSS EAST SIDE OF BRIDGE TO PB14 (13"x24") @ STA. 32+50± (LENGTH = 523'±). CONSTRUCT 2" CONDUIT FROM STA. 32+50±, EAST SIDE OF S.R. 615, TO EXISTING PB6 AT JOHNNYCAKE RIDGE RD. INTERSECTION (LENGTH = 4378'). PULL BOXES (13"x24") SHALL BE PLACED AT MAXIMUM 250' INTERVALS.

- NOTES:
 1) ALL ANGLES ARE MEASURED CLOCKWISE.
 2) BASE PLATE IS ORIENTATED SQUARE TO MAST ARM "A" (LARGEST ARM).
 3) INDEX LINE FOR PEDESTAL POLE IS CENTER OF HANDHOLE.

ORIENTATION ANGLE



PHASING DIAGRAM

OMIT φ1 WHEN φ2 IS ON

LOOP	SIZE	TURNS	MODE	DELAY	PHASE	REMARK	INHIBITED DELAY	LOCATION 1st FRONT CORNER	LOCATION 2nd FRONT CORNER
L-1	6X27	2	PRESENCE	-	φ4	STANDARD	-	STA. 26+89, 44.5' LT	STA. 26+95, 44.5' LT
L-2	6X35	2	PRESENCE	8.0	φ4	STANDARD	φ4	STA. 26+78, 36.5' LT	STA. 26+84, 36.5' LT
L-3	6X15	2	PRESENCE	8.0	φ4	STANDARD	φ4	STA. 26+57, 24' LT	STA. 26+62, 21' LT
L-4	6X27	2	PRESENCE	-	φ2	STANDARD	-	STA. 26+46, 4' RT	STA. 26+46, 10' RT
L-5	6X27	2	PRESENCE	8.0	φ2	STANDARD	φ2	STA. 26+46, 17' RT	STA. 26+46, 23' RT
S-1	6X16	3	PULSE	-	φ2	SYSTEM	-	STA. 23+88, 4' RT	STA. 23+88, 20' RT
S-2	6X14	3	PULSE	-	φ4	SYSTEM	-	STA. 84+00, 2' LT	STA. 84+00, 16' LT
S-3	6X6	3	PULSE	-	φ1	SYSTEM	-	STA. 27+70, 4' LT	STA. 27+70, 10' LT

LOOP DETECTOR CHART

SIGNAL DIRECTION	SIGNAL HEAD	φ4		φ1		φ2		FLASH	DWELL					
		R/W	CLEAR	R/W	CLEAR	R/W	CLEAR							
NORTHBOUND	A	R	R	R	R	R	R	G	G	Y	R	Y	G	
	B	R	R	R	R	R	R	R	G	G	Y	R	Y	G
EASTBOUND	C	G	G	Y	R	R	R	R	R	R	R	R	R	
	D	G	G	Y	R	R	R	R	R	R	R	R	R	
SOUTHBOUND	E	R	R	R	R	G	G	G	G	G	Y	R	Y	G
	F	R	R	R	R	G	G	G	G	G	Y	R	Y	G
WEST	Y-Y	DW	DW	DW	DW	W	W	W	W	W	DW	DW	DW	DW
NORTH	X-X	W	DW	DW	DW	DW	DW	DW	DW	DW	DW	DW	DW	DW

* ONLY UPON PEDESTRIAN PUSHBUTTON ACTUATION

SIGNAL SEQUENCE CHART

DATE: 07-06-01 - H:\CT\97125\SDSK\TRAFFIC\97125T02.DWG - PLOT SCALE = 1:1

CALCULATED A.E.P. CHECKED I.M.H.

S.R. 615 - INTERSTATE 90 EASTBOUND EXIT SIGNAL PLAN

LAK-IR90/SR615-9.26/1.51