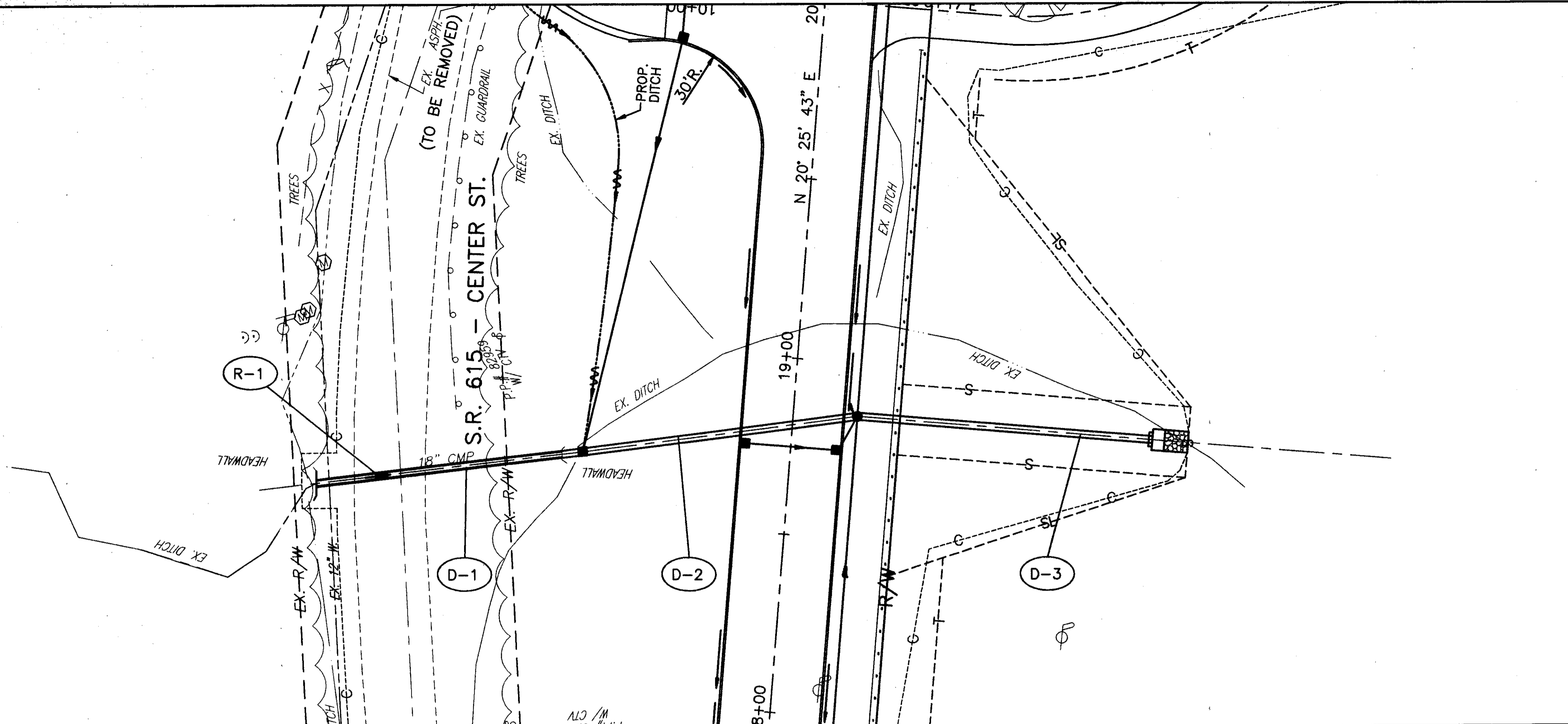
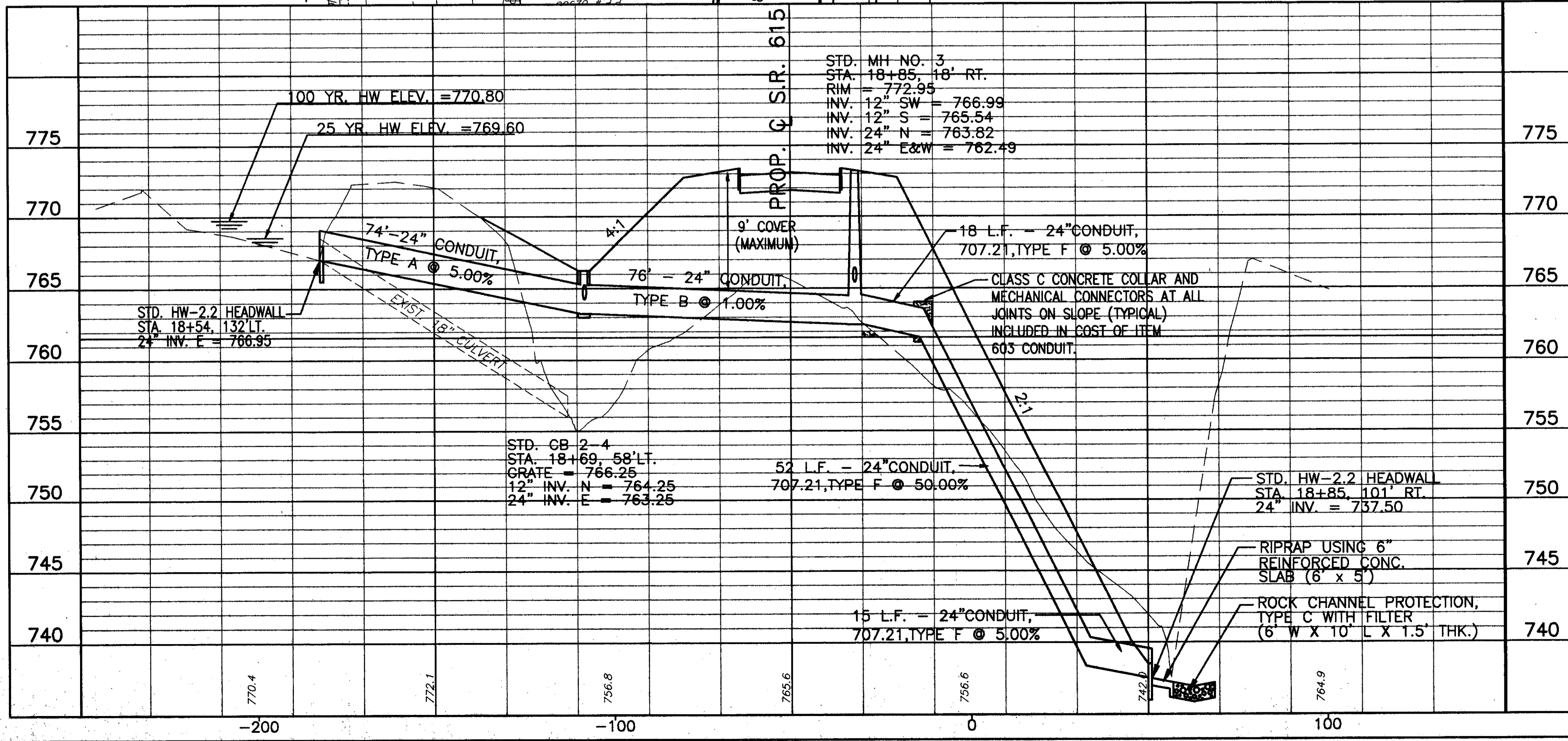
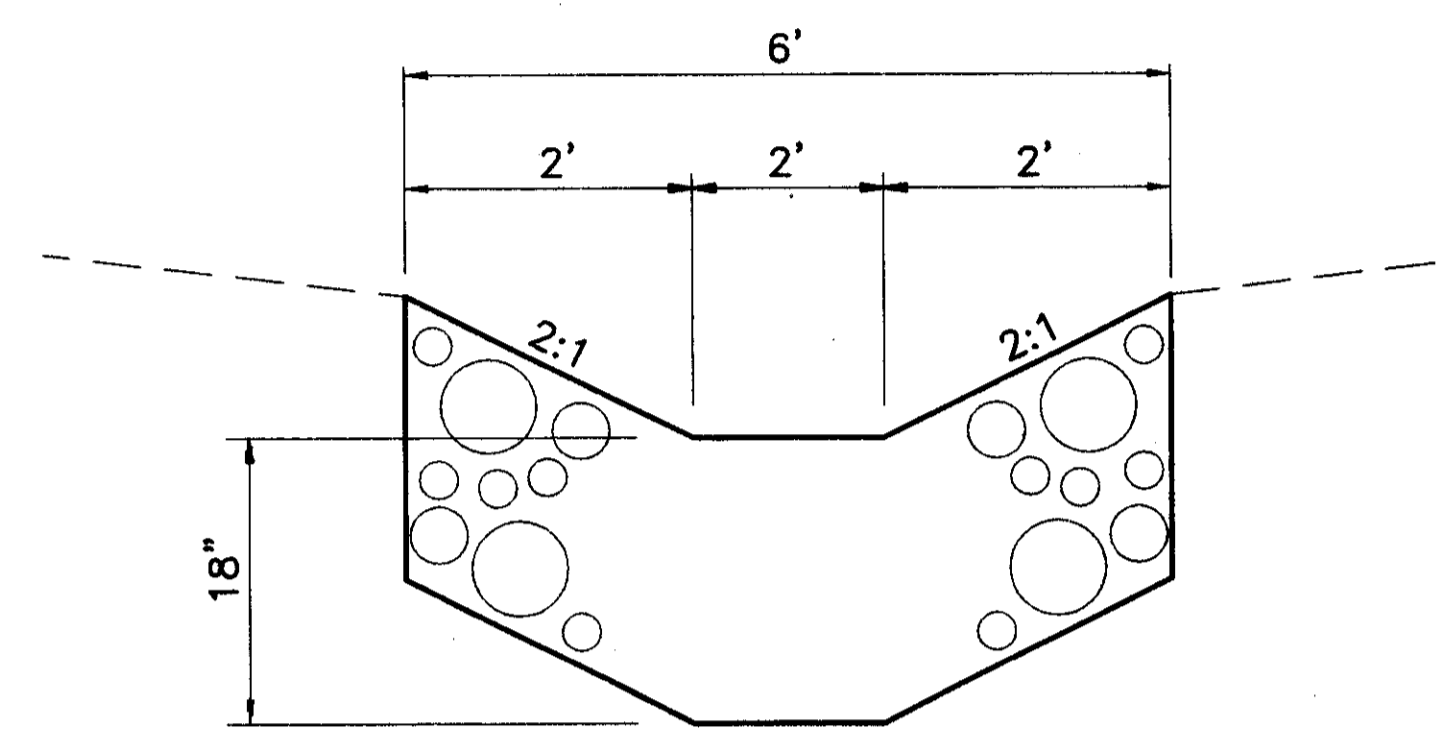


H:\ACT\97125\SDSK\71250703.DWG - PLOT SCALE = 1 : 1



PROPOSED STRUCTURE DATA	
TYPE	= 24" CONDUIT, TYPE B, 706.02
DRAINAGE AREA	= 9.0 AC.
Q ₂₅	= 20 C.F.S.
Q ₁₀₀	= 28 C.F.S.
HW ₂₅	= 769.60
HW ₁₀₀	= 770.80
V ₂₅	= 14.60 F.P.S.
V ₁₀₀	= 16.20 F.P.S.

EXISTING STRUCTURE DATA	
TYPE	= CORRUGATED METAL
SIZE	= 18"
ALIGNMENT	= TANGENT



ITEM	DESCRIPTION	EACH	UNITS	QUANTITY	UNIT PRICE	TOTAL
603	24" CONDUIT, TYPE F, AS PER PLAN		LN.F.T.			85
603	24" CONDUIT, TYPE B, AS PER PLAN		LN.F.T.	76		76
603	24" CONDUIT, TYPE A, AS PER PLAN		LN.F.T.	74		74
602	CONCRETE MASONRY		CU.YD.	0.43	0.43	0.86
601	ROCK CHANNEL PROTECTION, TYPE C WITH FILTER		CU.YD.	3.3	3.3	3.3
601	RIPRAP 6" REINFORCED CONCRETE SLAB		SQ.YD.	3.33	3.33	3.33
202	PIPE REMOVED, 24" AND UNDER		LN.F.T.	70		70
202	STRUCTURE REMOVED			2		2
				TOTALS		85

REF	LOCATION
D-1	STA. 18+54 TO STA. 18+69, LT.
D-2	STA. 18+69, LT. TO STA. 18+85, RT.
D-3	STA. 18+85, 18' RT. TO 10' RT.
R-1	STA. 18+54 TO STA. 18+88±, LT.

LAK-IR90/SR615-9.26/1.51
 CULVERT DETAIL
 PLAN AND PROFILE STA. 19+36.05
 265
 393