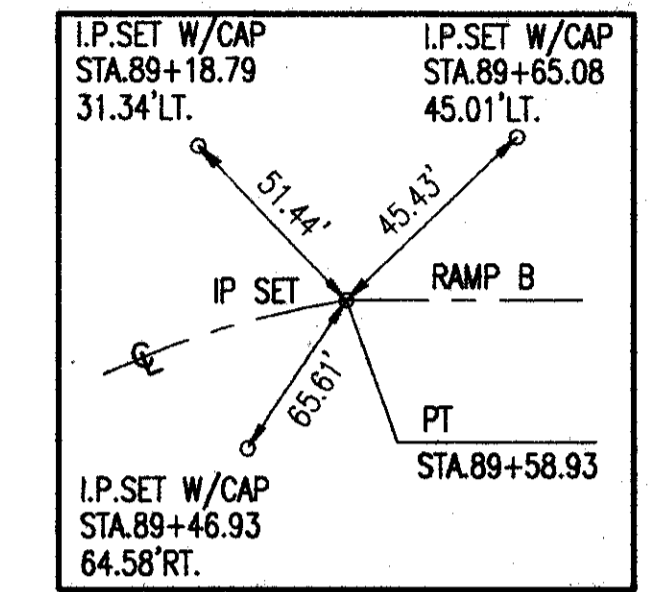
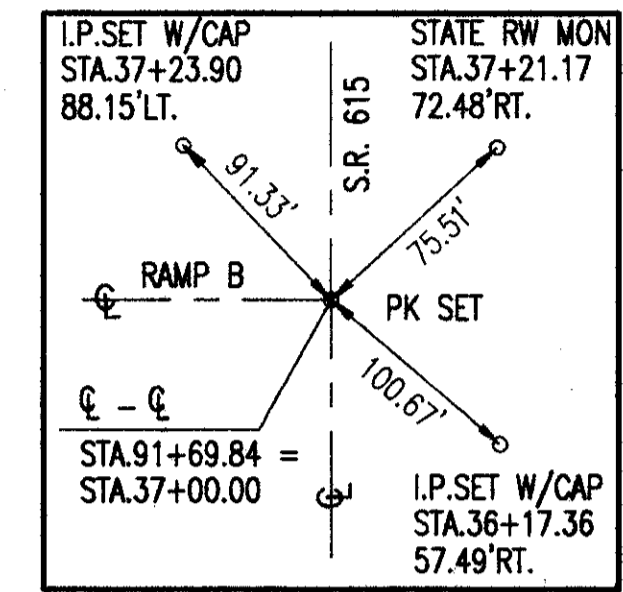


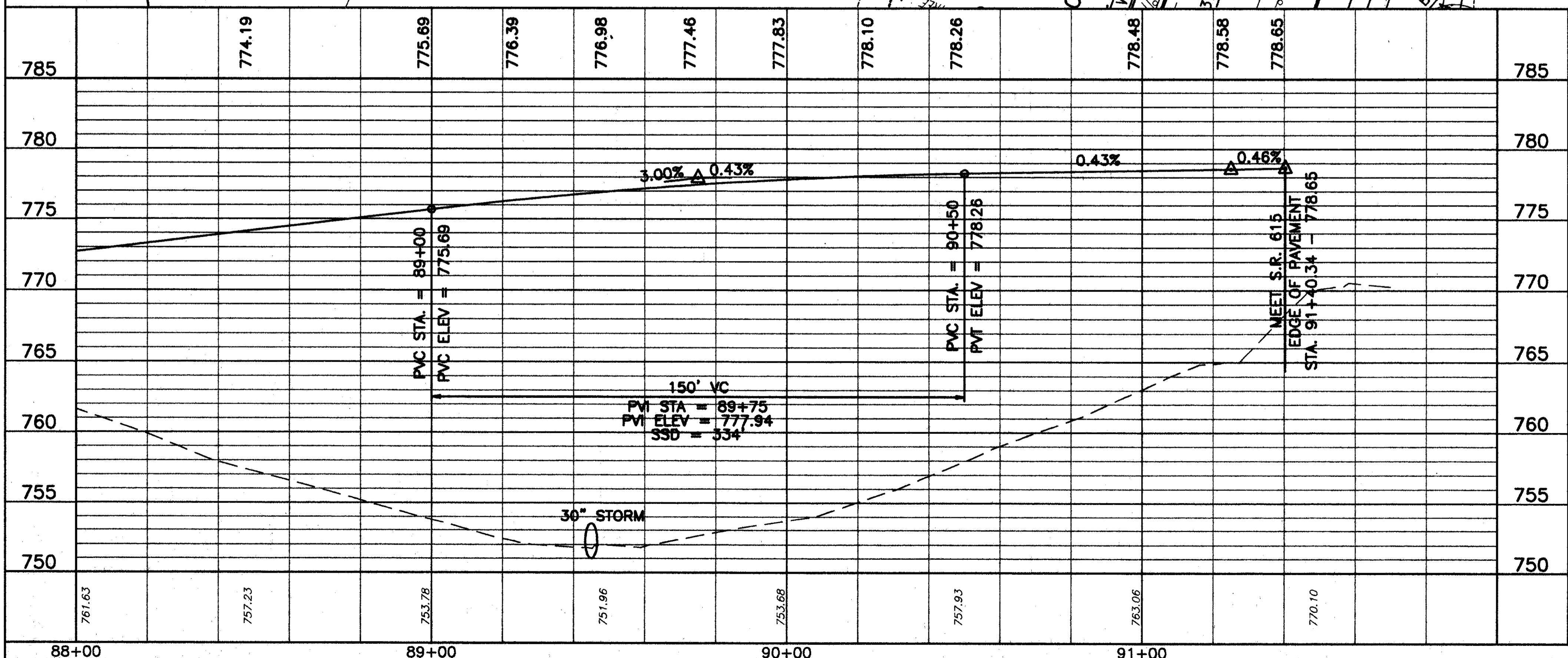
PROPOSED STRUCTURE DATA - STA. 89+43.75

TYPE	= 30" CONDUIT, TYPE A, 706.02
DRAINAGE AREA	= 2.1 AC.
Q ₂₅	= 5.00 C.F.S.
Q ₁₀₀	= 7.00 C.F.S.
HW ₂₅	= 751.60
HW ₁₀₀	= 751.89
V ₂₅	= 4.71 F.P.S.
V ₁₀₀	= 5.38 F.P.S.



FOR TYPICAL SECTIONS, SEE SHEETS 5 THRU 15
 FOR CROSS SECTIONS AND PIPE PROFILES, SEE SHEETS 194 THRU 210
 FOR SUPERELEVATION TABLES, SEE SHEETS 246 THRU 254
 FOR INTERSECTION DETAILS, SEE SHEETS 255 THRU 262
 FOR SIGNING AND PAVEMENT MARKING PLAN, SEE SHEETS 308 THRU 310

EROSION CONTROL WITH TURF REINFORCING MAT (8' WIDE)



SPECIAL	DESCRIPTION	QTY.	UNIT	AMOUNT	PRICE	TOTAL
604	EROSION CONTROL WITH TURF REINFORCING MAT	1	SQ. YD.	40.00	31.11	1244.40
603	CATCH BASIN NO. 5, AS PER PLAN	1	EACH			1
602	30" CONDUIT, TYPE A, 706.02, 2250 D-LOAD OR 30" CONDUIT, TYPE A, 707.09, (0.109), AS PER PLAN	132	LINEAL FT.			132
601	CONCRETE MASONRY	0.56	CU. YD.			0.56
601	ROCK CHANNEL PROTECTION, TYPE C WITH FILTER	2.7	CU. YD.			2.7
601	RIPRAP 6" REINFORCED CONCRETE SLAB	3.33	SQ. YD.			3.33
TOTALS						1244.40