

M1 CURVE DATA
 P.I. STA. = 3+43.75
 $\Delta = 12^\circ 36' 15''$
 $R = 150.00'$
 $T = 16.57'$
 $L = 33.00'$
 $E = 0.91'$

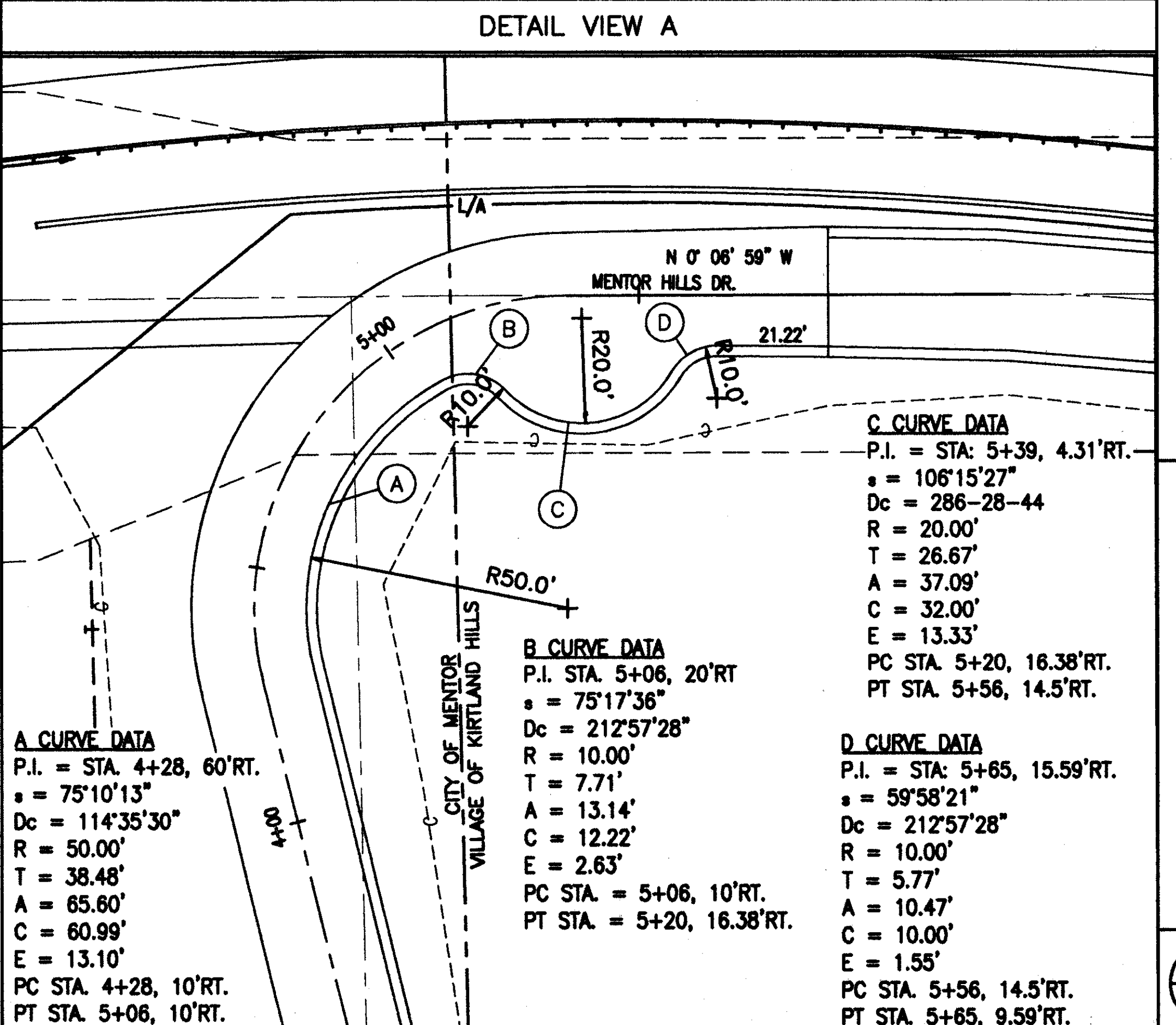
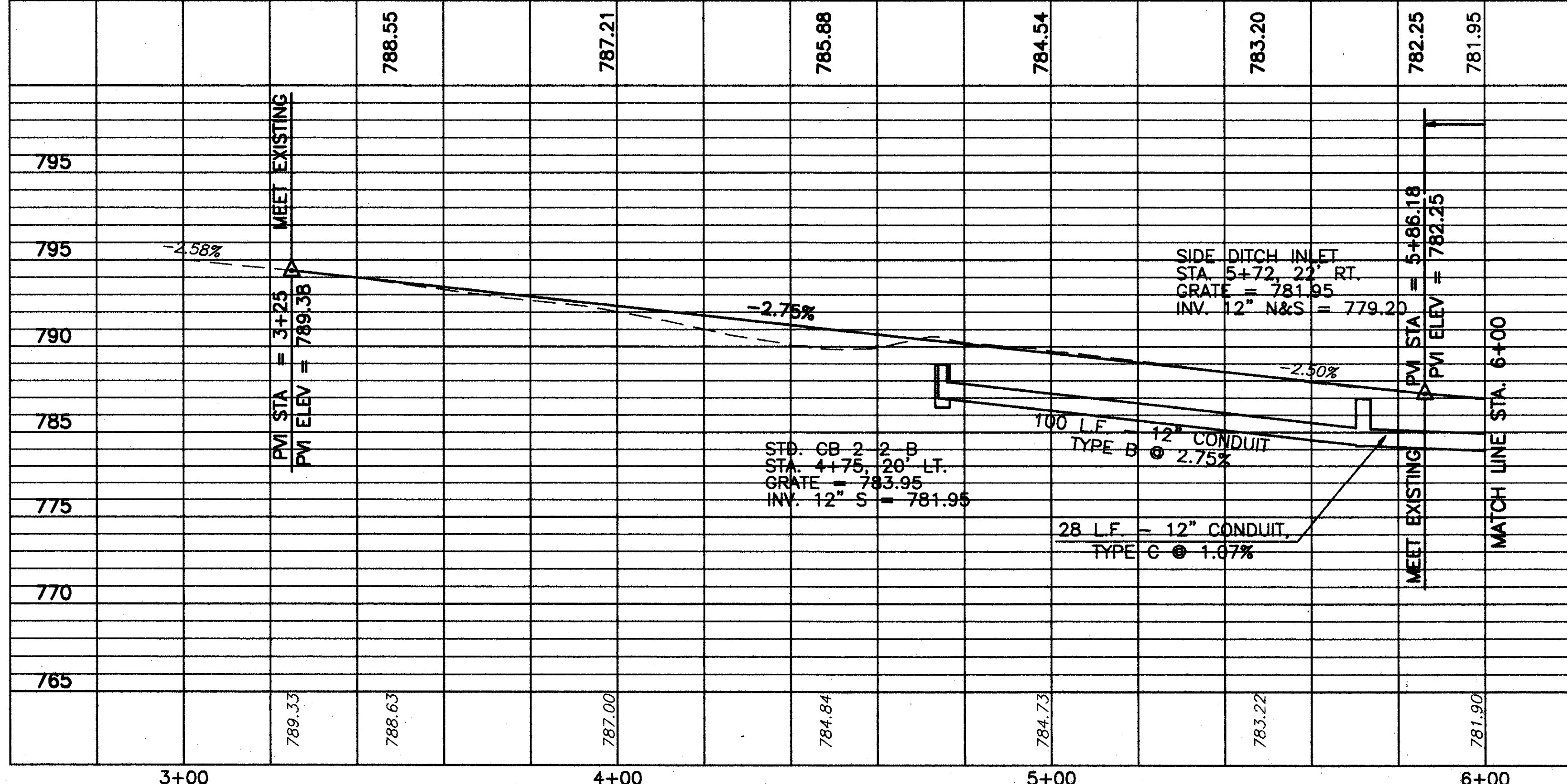
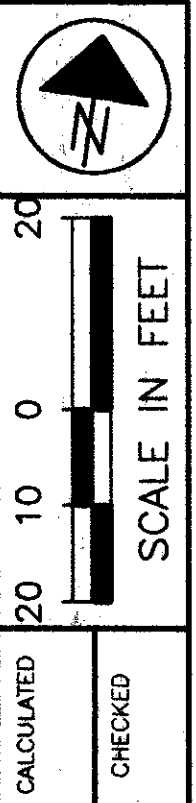
M2 CURVE DATA
 P.I. STA. = 5+03.97
 $\Delta = 103^\circ 35' 25''$
 $D_c = 95^\circ 29' 35''$
 $R = 60.00'$
 $T = 76.23'$
 $L = 108.48'$
 $E = 37.04'$
 $e_{max} = 0.020$
 PC STA. = 4+27.70
 PT STA. = 5+36.18

**BEGIN WORK
 STA. 3+25.32**

FOR TYPICAL SECTIONS, SEE SHEETS 5 THRU 15
 FOR CROSS SECTIONS AND PIPE PROFILES, SEE SHEETS 164 THRU 168
 FOR INTERSECTION DETAILS, SEE SHEETS 255 THRU 262
 FOR SIGNING AND PAVEMENT MARKING PLAN, SEE SHEETS 299 THRU 3

NO.	DESCRIPTION	UNIT	QUANTITY
604	INLET, SIDE DITCH	EACH	1
604	CATCH BASIN NO. 2-2B, AS PER PLAN	EACH	1
603	12" CONDUIT, TYPE C, AS PER PLAN	LINEAL FT.	28
603	12" CONDUIT, TYPE B, AS PER PLAN	LINEAL FT.	12
		TOTALS	40

REF.	LOCATION	LINEAL FT.	INLET	CATCH BASIN	CONDUIT
D-1	STA. 4+75, LT. TO STA. 5+72, LT.	100	1	1	28
D-2	STA. 5+72, RT. TO STA. 5+76, RT.	100	1	1	12
D-3	STA. 4+85, RT. TO STA. 4+98, RT.	100	1	1	12
TOTALS		300	3	3	52



MENTOR HILLS DRIVE (PRIVATE)
 PLAN AND PROFILE STA. 3+00 TO STA. 6+00

LAK-1R90/SR615-9.26/1.51

MENTOR HILLS DRIVE (PRIVATE) PLAN AND PROFILE STA. 3+00 TO STA. 6+00