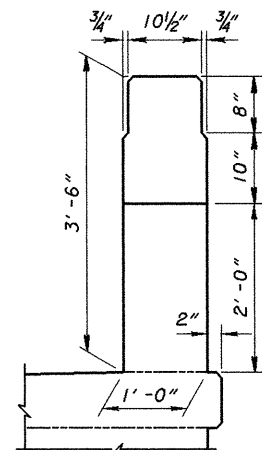
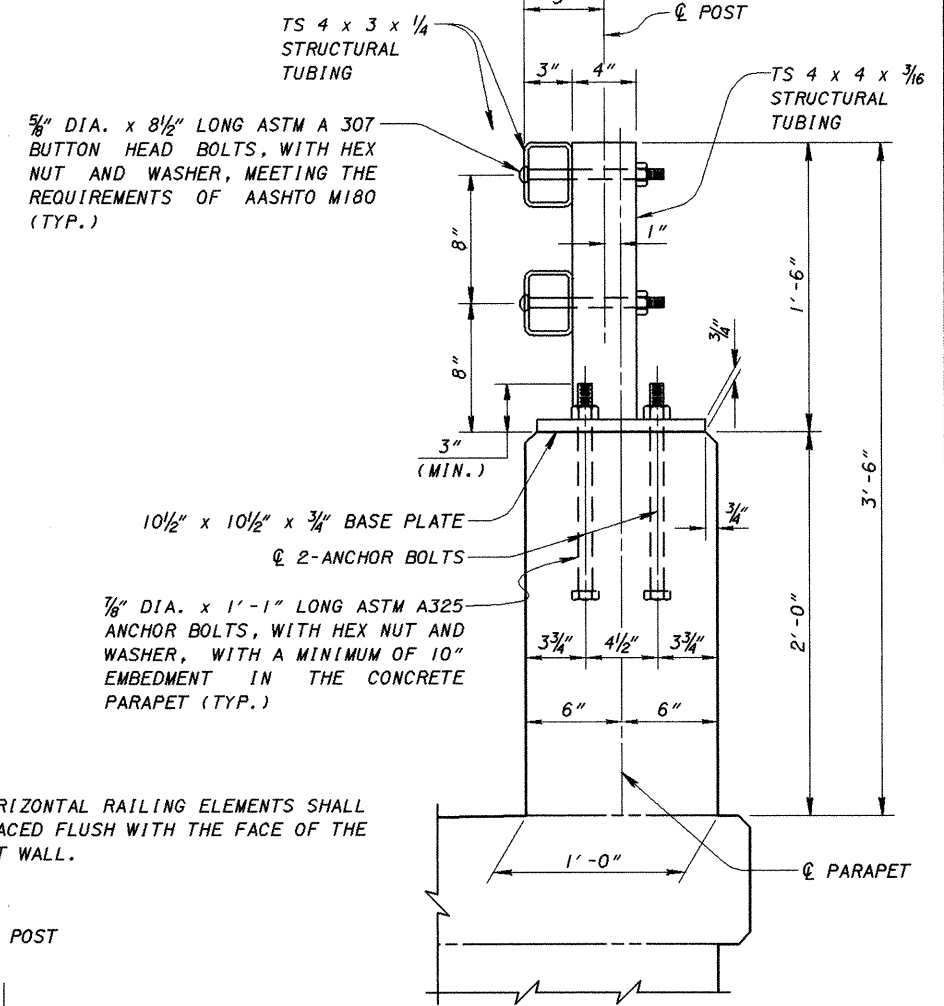


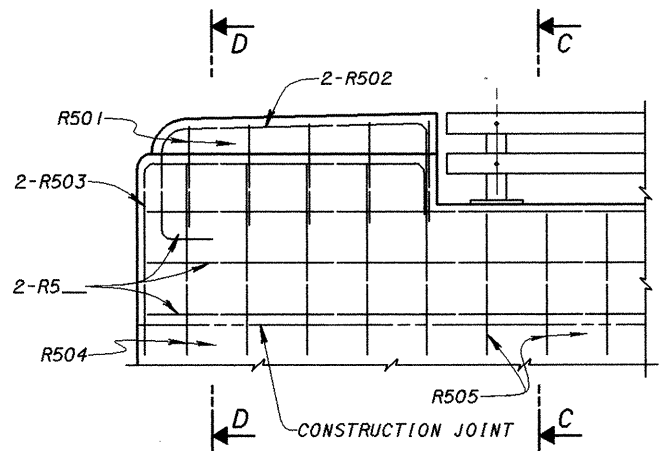
BRIDGE SIDEWALK RAILING WITH NO APPROACH RAILING



SECTION B-B

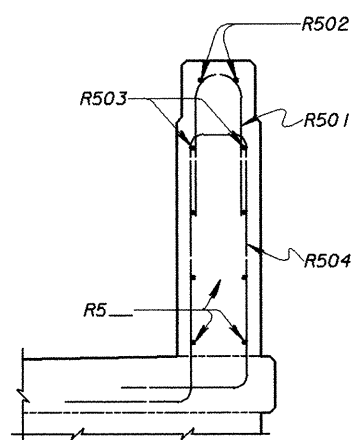


SECTION A-A

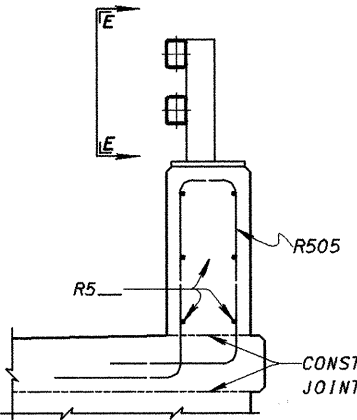


ELEVATION

VERTICAL BARS SHALL BE SPACED AT 1'-0" MAXIMUM. (see project plans)

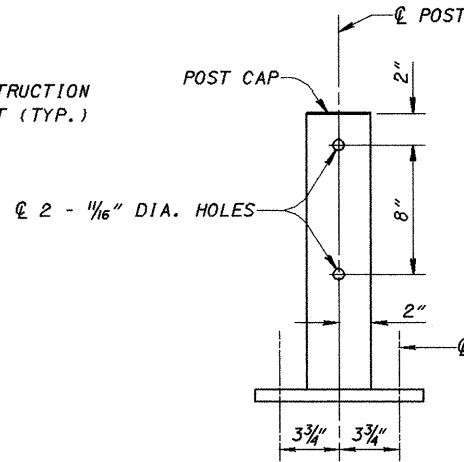


SECTION D-D



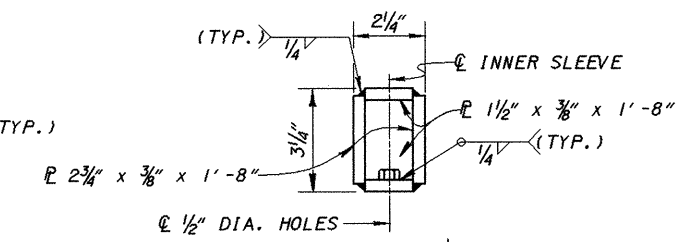
SECTION C-C

NOTE: THE HORIZONTAL RAILING ELEMENTS SHALL BE PLACED FLUSH WITH THE FACE OF THE PARAPET WALL.



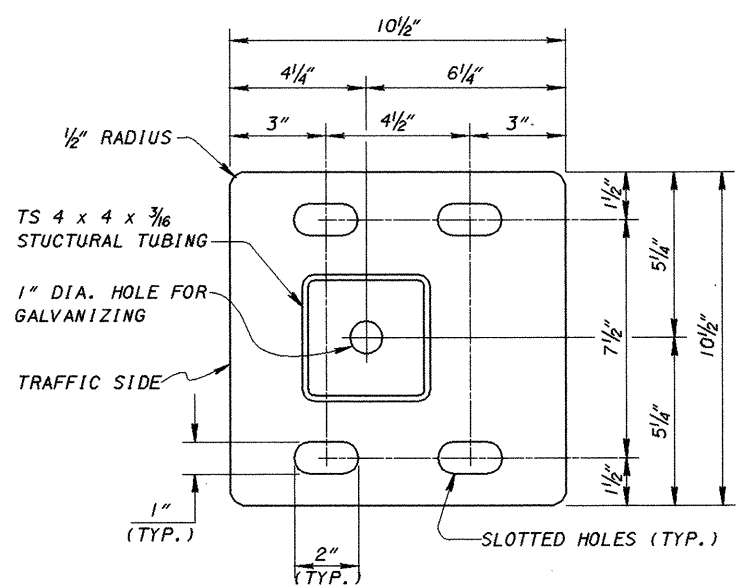
VIEW E-E

(Tube rail not shown for clarity) (SEE SHEET 2/3 FOR POST CAP DETAILS)

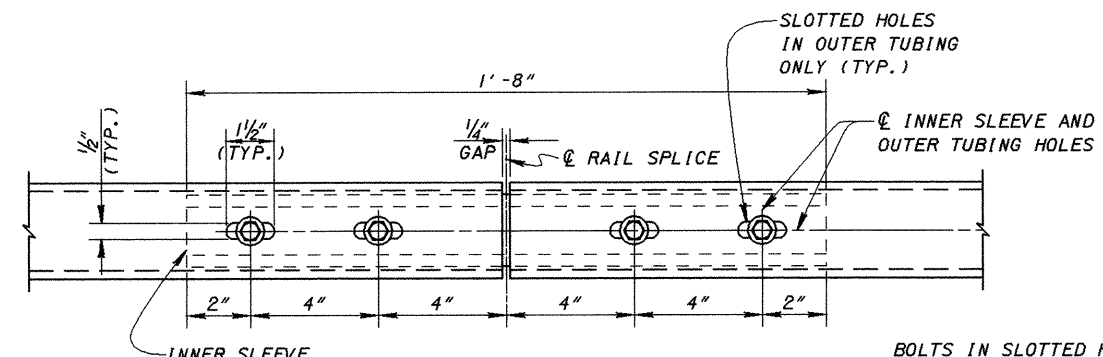


INNER SLEEVE

(FINISHED DIMENSIONS)

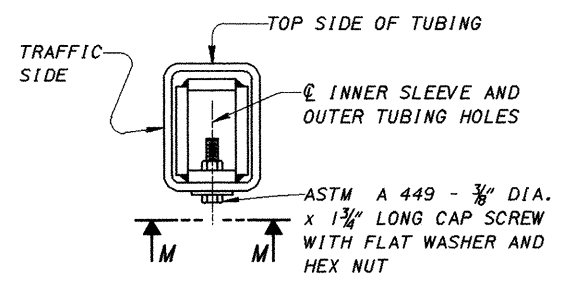


BASE PLATE DETAIL



VIEW M-M

BOLTS IN SLOTTED HOLES SHALL NOT BE DRAWN UP SO TIGHT AS TO PREVENT SLIDING BETWEEN THE OUTER TUBE AND THE INNER SLEEVE.



INTERNAL SPLICE

RAIL SPLICE DETAILS

DESIGN AGENCY	OFFICE OF	STRUCTURAL ENGINEERING
STATE OF OHIO DEPARTMENT OF TRANSPORTATION	12-29-98	DATE
ADMINISTRATOR	Brad Fogwell	
REVISIONS	DESIGNED JS	DRAWN SAM
CHECKED SDS	BR-2-98	
REVIEWED WTL		
STANDARD	BRIDGE SIDEWALK RAILING WITH CONCRETE PARAPETS	
	1/3	