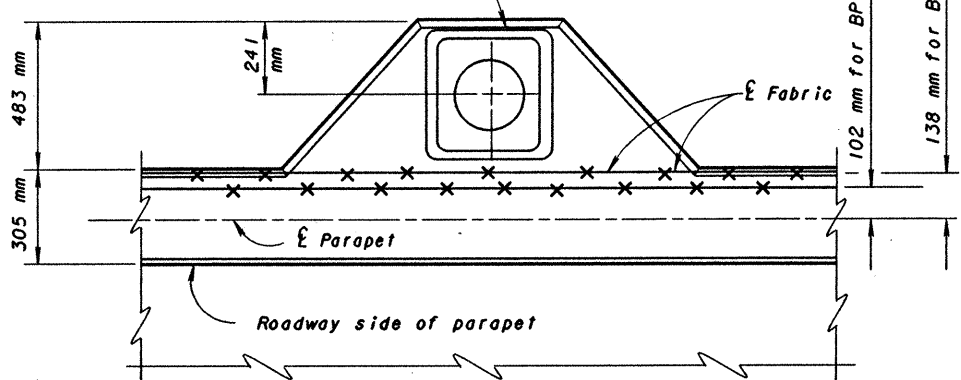


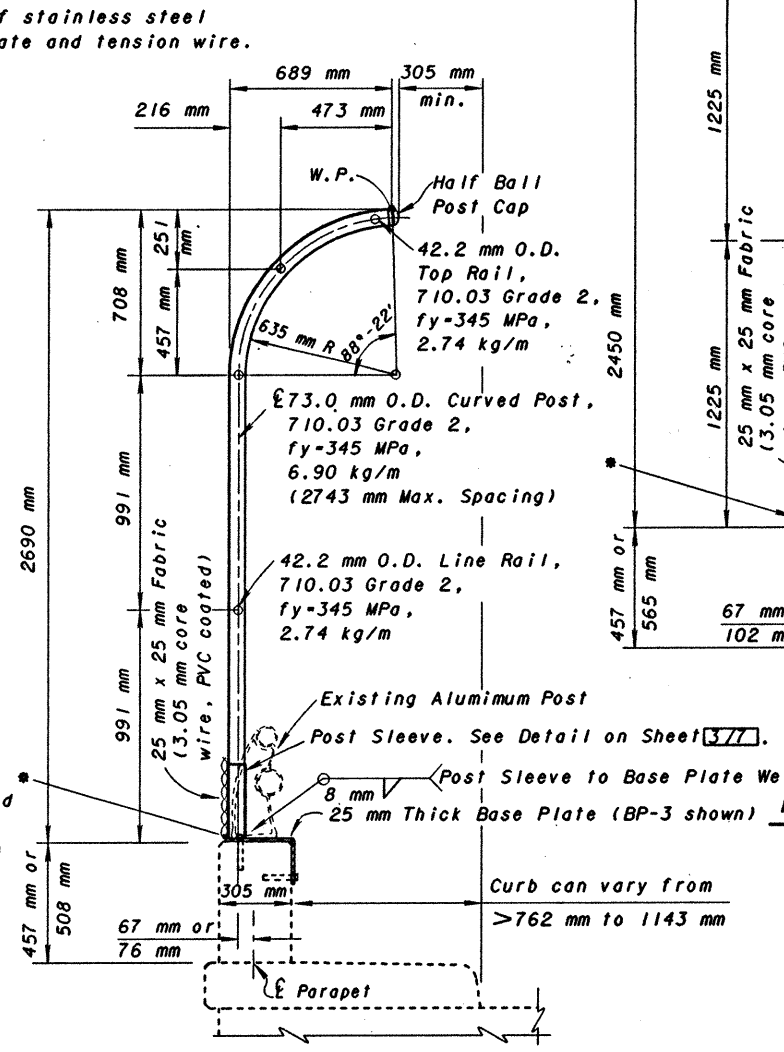
POST SECTION PS-1
(3650 mm CURVED FENCE)

Notes: For Post Sections PS-1 and PS-2, see project plans for sidewalk, parapet and fence post dimensions. Begin fabric at Base Plate. (Maximum gap between fabric and concrete parapet = 25 mm)

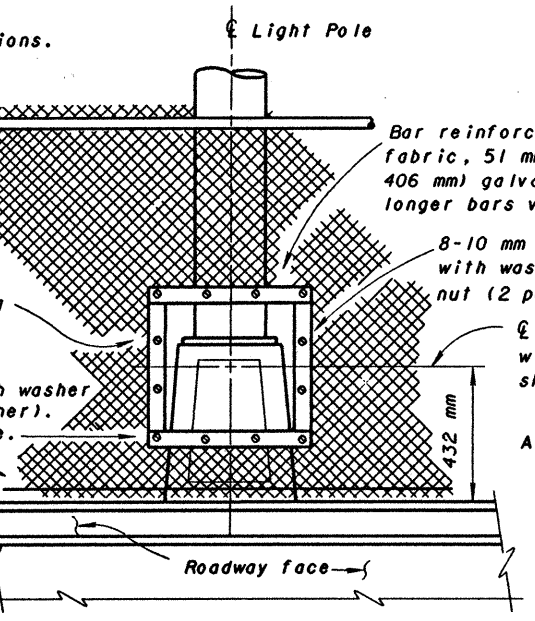
Light pole transformer base, 406 mm square. For additional details see Std. Drwgs. HL-10.13 and HL-20.14. If base exceeds 406 mm square, a special fence design may be required.



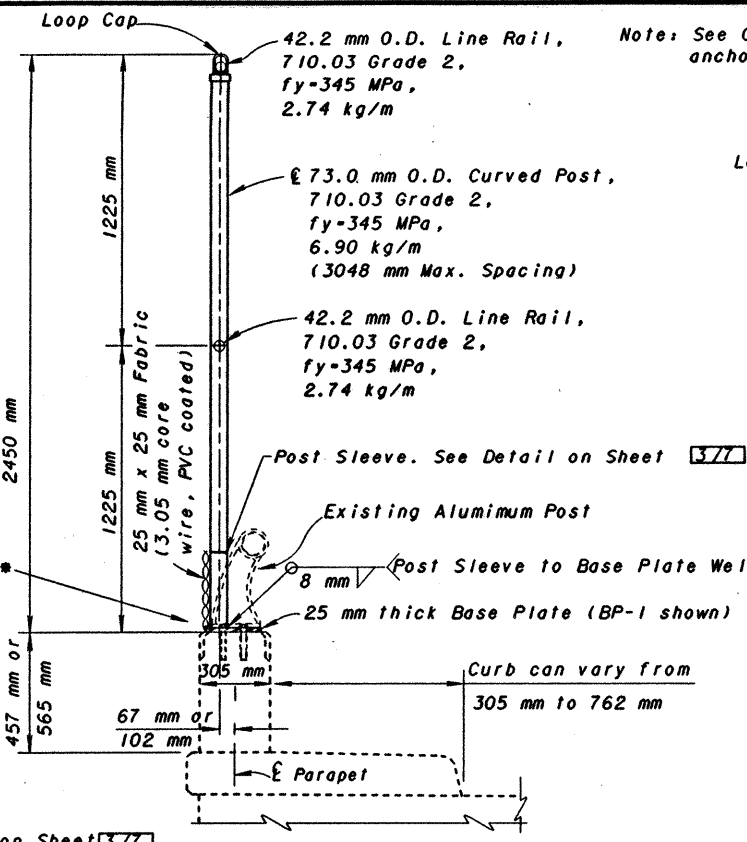
FENCE DETAILS AT TYPICAL LIGHT POLE PILASTER
(EXISTING ALUMINUM RAIL(S) NOT SHOWN)



POST SECTION PS-2
(3050 mm CURVED FENCE)

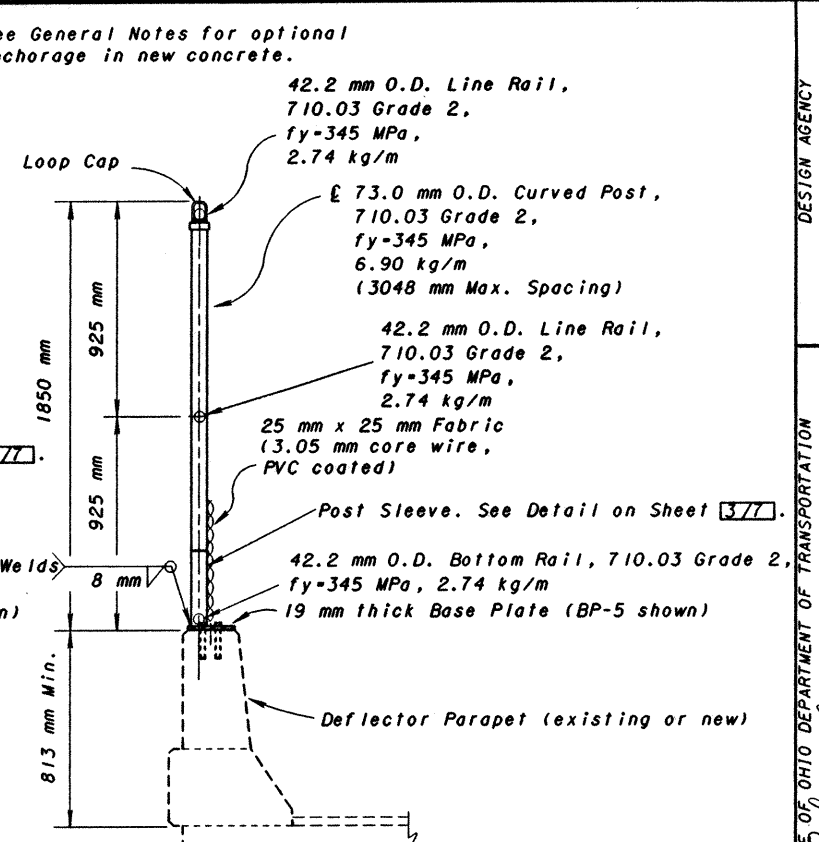


ACCESS OPENING AT LIGHT POLE
(COVER NOT SHOWN)

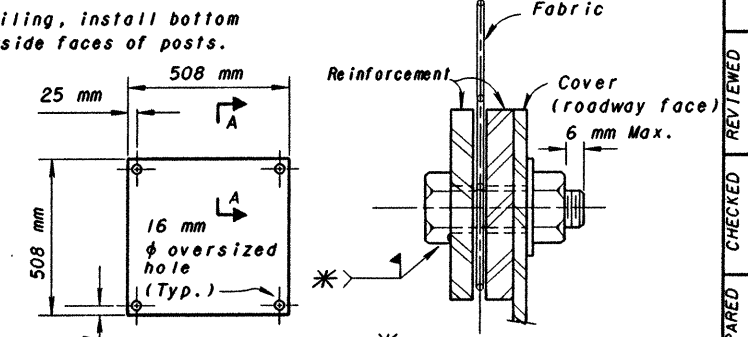


POST SECTION PS-3
(2450 mm STRAIGHT FENCE)

Note: For new parapet without aluminum railing, install bottom rail and locate fence fabric along inside faces of posts.



POST SECTION PS-4
(1850 mm STRAIGHT FENCE)



SECTION A-A
ACCESS COVER
(Showing corner bolt)

All hardware shall be galvanized as per 711.02

DESIGN AGENCY: BUREAU OF BRIDGES AND STRUCTURAL DESIGN
 STATE OF OHIO DEPARTMENT OF TRANSPORTATION
 REVIEWED: WTF/LMW
 CHECKED: RLD
 DRAWING NO.: VPF-1-90M
 PREPARED: JCR
 DRAWN: GFJ/RJS
 REVISIONS: [None]
 STANDARD DRAWING: VANDAL PROTECTION FENCE POST SECTIONS AND DETAILS
 DATE: 5-20-95
 ENGINEER OF BRIDGES: [Signature]