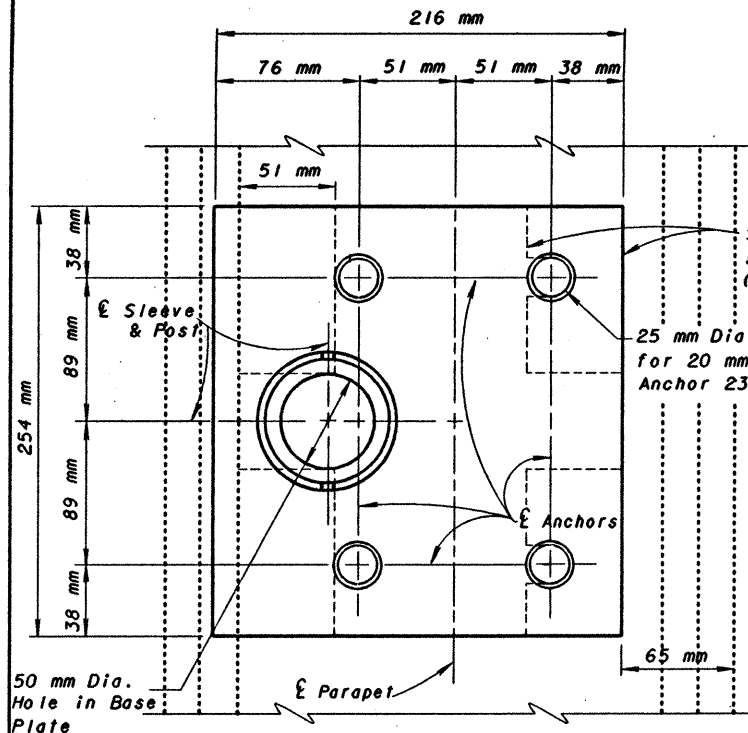
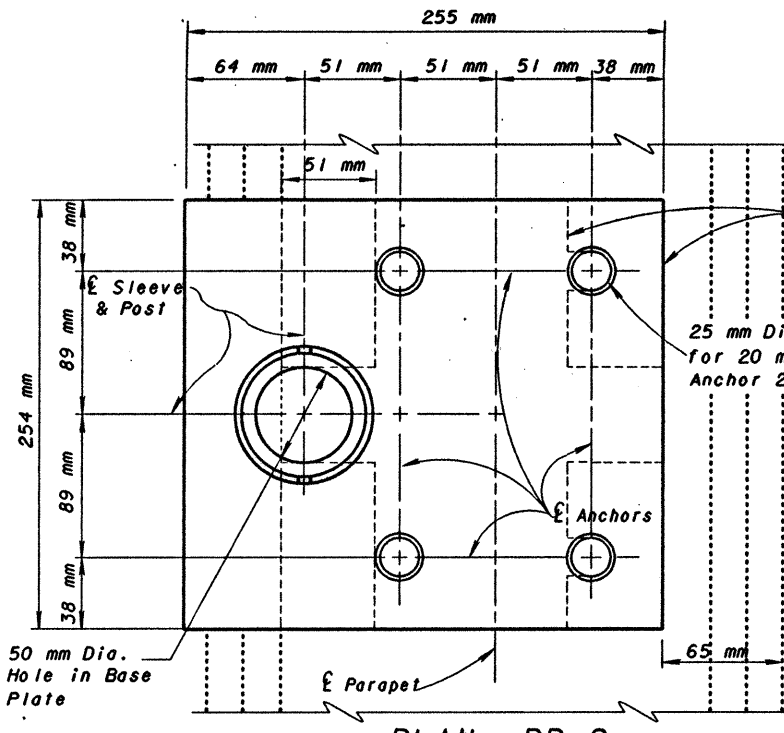


RETROFIT BASE PLATES FOR FENCE POSTS



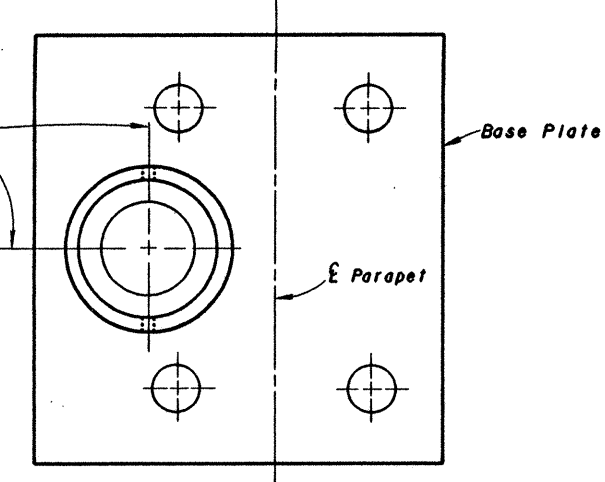
PLAN BP-1

SHIM POSITIONS ARE SHOWN, POST AND SET SCREWS NOT SHOWN



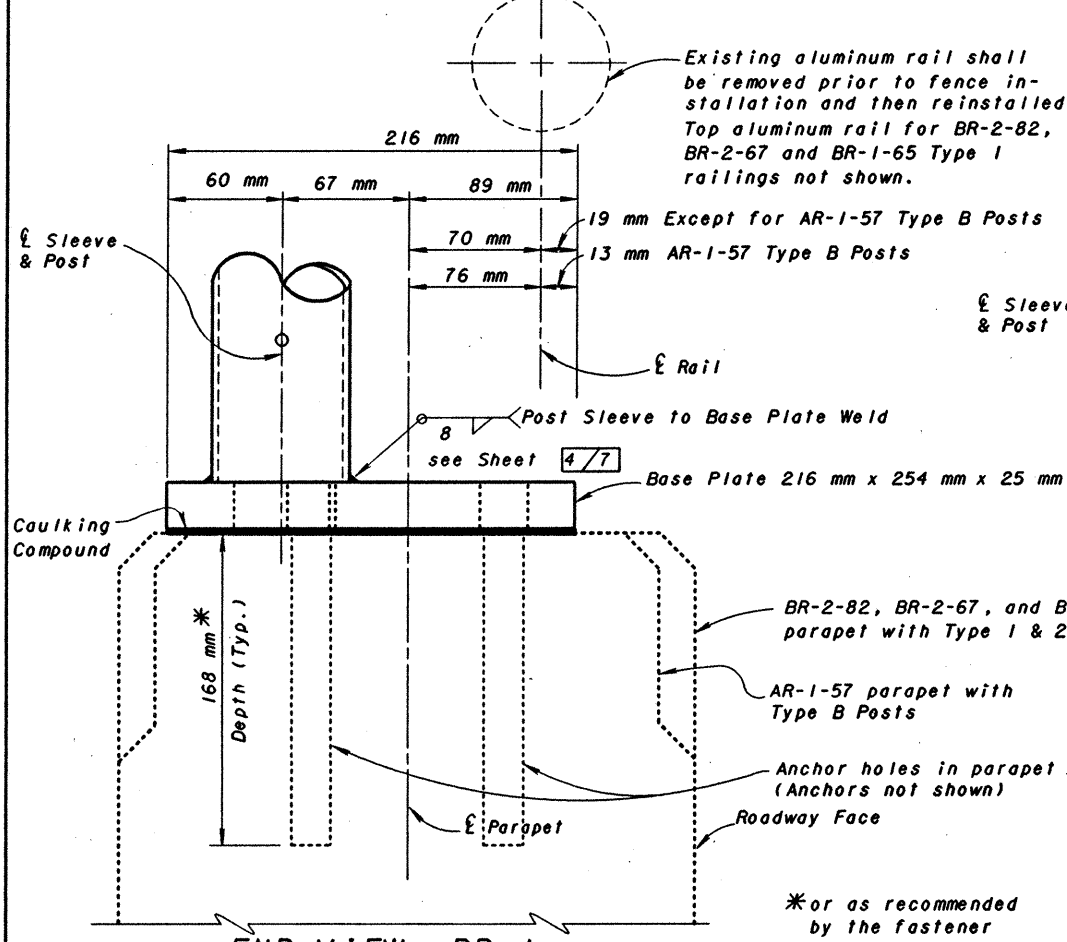
PLAN BP-2

SHIM POSITIONS ARE SHOWN, POST AND SET SCREWS NOT SHOWN

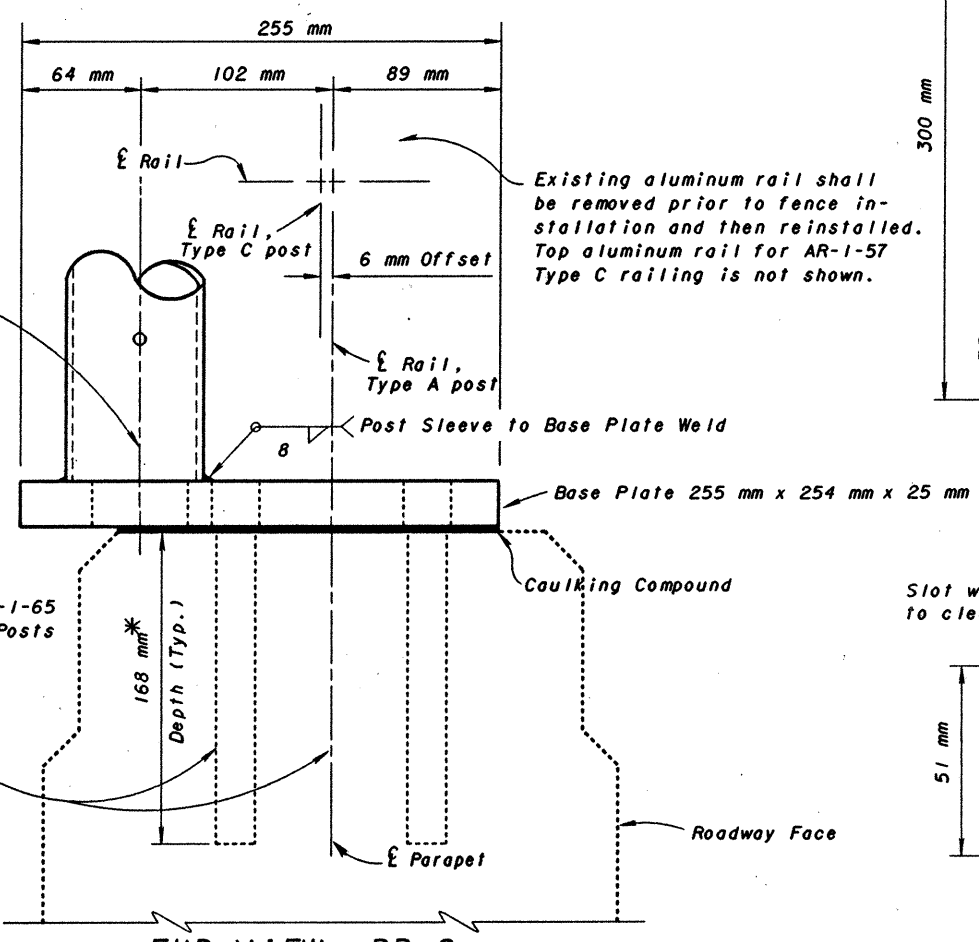


POST SLEEVE PLAN

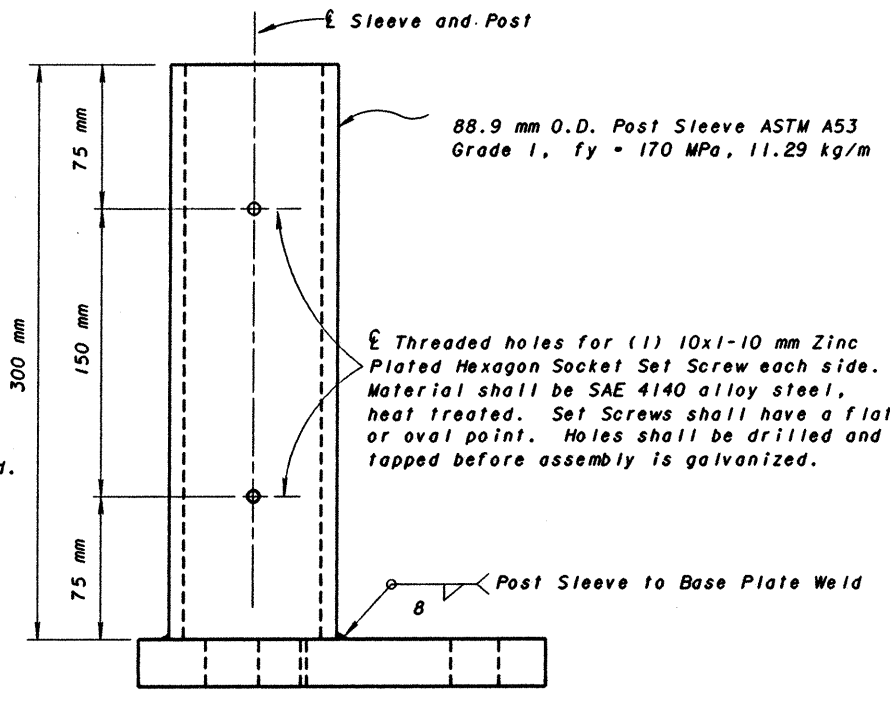
POST AND SET SCREWS NOT SHOWN



END VIEW BP-1

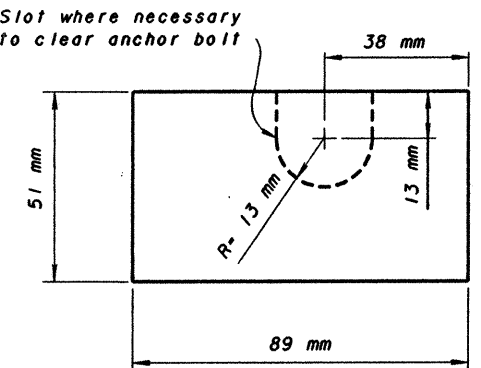


END VIEW BP-2



POST SLEEVE ELEVATION

POST AND SET SCREWS NOT SHOWN



BASE PLATE SHIMS

2 mm, 3 mm and 6 mm thick

Fence shall be installed by removing and reinstalling the aluminum rail(s). Base Plate shall be used on parapets having aluminum railing as shown on Standard Drawings BR-2-82, BR-2-67, BR-1-65 with Types 1 & 2 Posts and AR-1-57 with Type B Posts. Base Plate requires a sleeve. See Post Sleeve Detail on this sheet.

Fence shall be installed by removing and reinstalling the aluminum rail(s). Base Plate shall be used on parapets having aluminum railing as shown on Standard Drawing AR-1-57 with Types A and C posts. Base Plate requires a sleeve. See Post Sleeve Details on this sheet.

Existing aluminum rail shall be removed prior to fence installation and then reinstalled. Top aluminum rail for BR-2-82, BR-2-67 and BR-1-65 Type 1 railings not shown.

Existing aluminum rail shall be removed prior to fence installation and then reinstalled. Top aluminum rail for AR-1-57 Type C railing is not shown.

88.9 mm O.D. Post Sleeve ASTM A53 Grade 1, fy = 170 MPa, 11.29 kg/m

Threaded holes for (1) 10x1-10 mm Zinc Plated Hexagon Socket Set Screw each side. Material shall be SAE 4140 alloy steel, heat treated. Set Screws shall have a flat or oval point. Holes shall be drilled and tapped before assembly is galvanized.

*or as recommended by the fastener manufacturer.

DESIGN AGENCY	BUREAU OF BRIDGES AND STRUCTURAL DESIGN
STATE OF OHIO DEPARTMENT OF TRANSPORTATION	DATE
REVIEWED	8-20-95
CHECKED	
PREPARED	
REVISIONS	
STANDARD DRAWING	
VANDAL PROTECTION FENCE RETROFIT BASE PLATES WHEN RAILS ARE REMOVED AND REINSTALLED	
3/7	