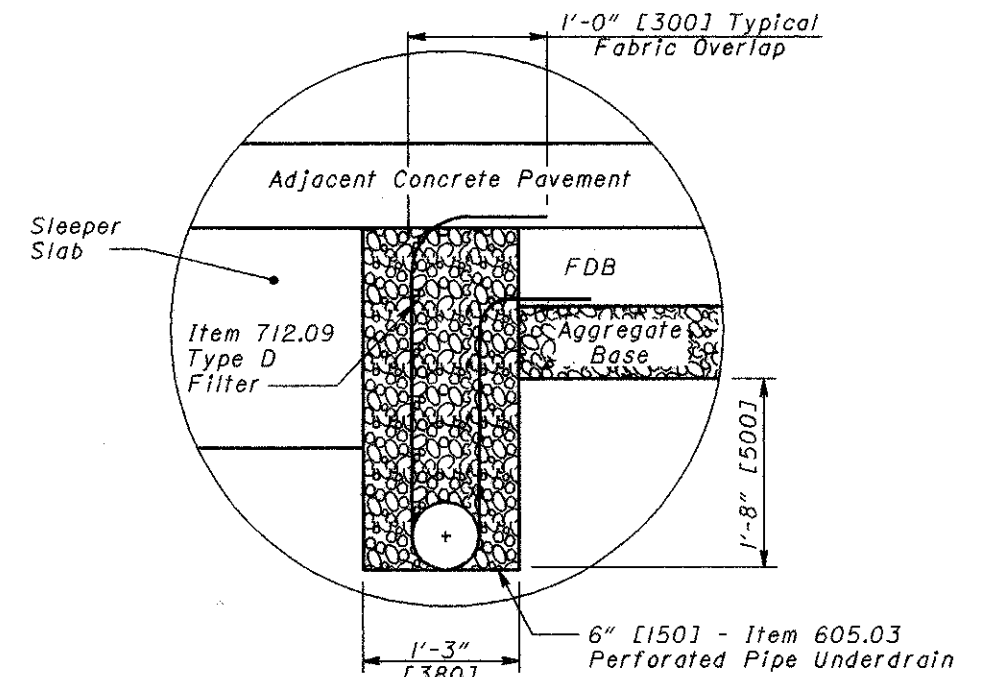


**PLAN VIEW
PRESSURE RELIEF JOINT - TYPE A
AT NEW APPROACH SLAB**
(Concrete Shoulders shown)

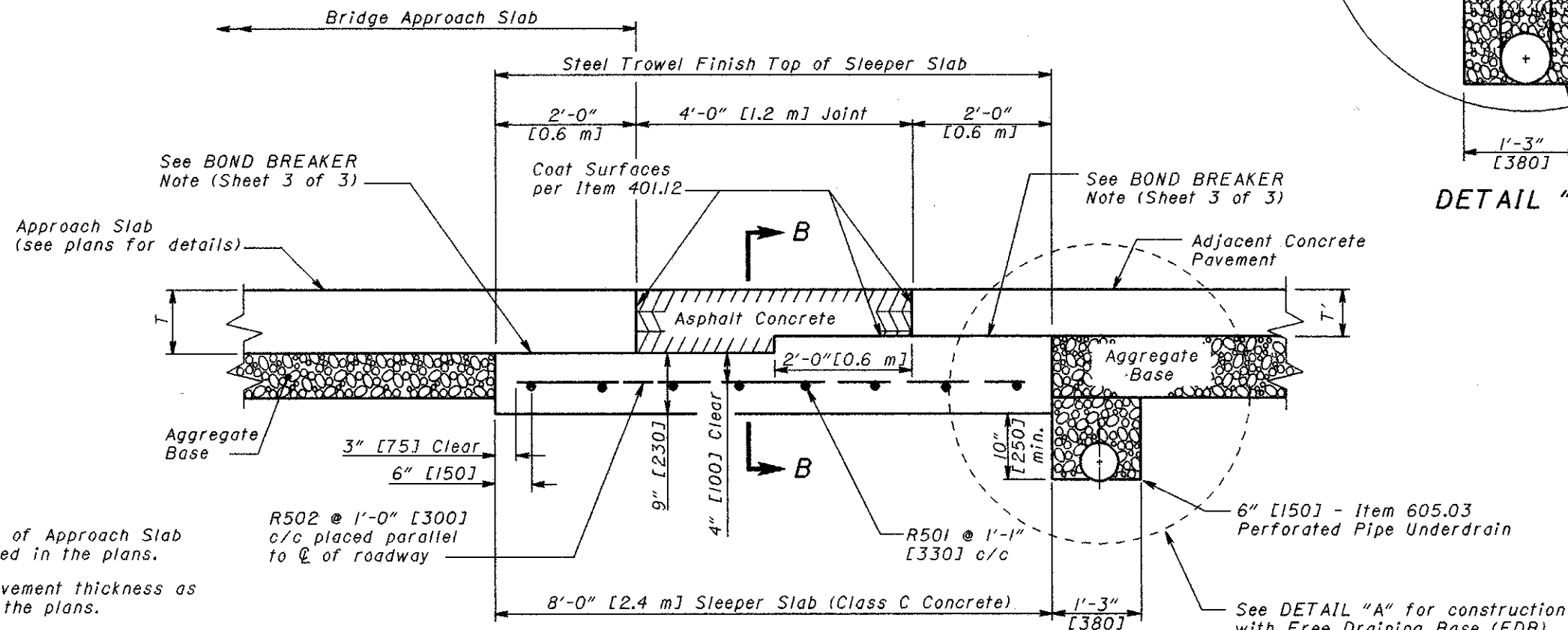
REINFORCING STEEL LIST					
Mark	Shape	Number		Length	
		English	Metric	English	Metric
R501 [#16M] [I]	Straight	8	8	S-0.5 ft.	S-0.15 m
R502 [#16M]	Straight	$N = \frac{S}{1 \text{ ft.}}$	$N = \frac{S}{0.3 \text{ m}}$	$\frac{8}{\cos \theta} \text{ ft.}$	$\frac{2.25}{\cos \theta} \text{ m}$

S = Length of sleeper slab in feet [meters]

[I] R501 bars may be furnished in segments with a 1'-7" [485] bar lap between segments.



DETAIL "A"



SECTION A-A AT NEW APPROACH SLAB

T = Thickness of Approach Slab as required in the plans.

T' = Design Pavement thickness as shown in the plans.

STANDARD ROADWAY CONSTRUCTION DRAWING
 PRESSURE RELIEF JOINT TYPE A
 (at New Approach Slab)
 NUMBER BP-2.3
 1/3
 ROADWAY ENGINEERING SERVICES
 ALL metric dimensions (in brackets []) are in millimeters unless otherwise noted.
 STDS. ENGR. M. EVANS
 REVISIONS 7-28-00
 QMS DEPARTMENT OF TRANSPORTATION
 ROADWAY DESIGN ENGINEER
 DATE 29-99