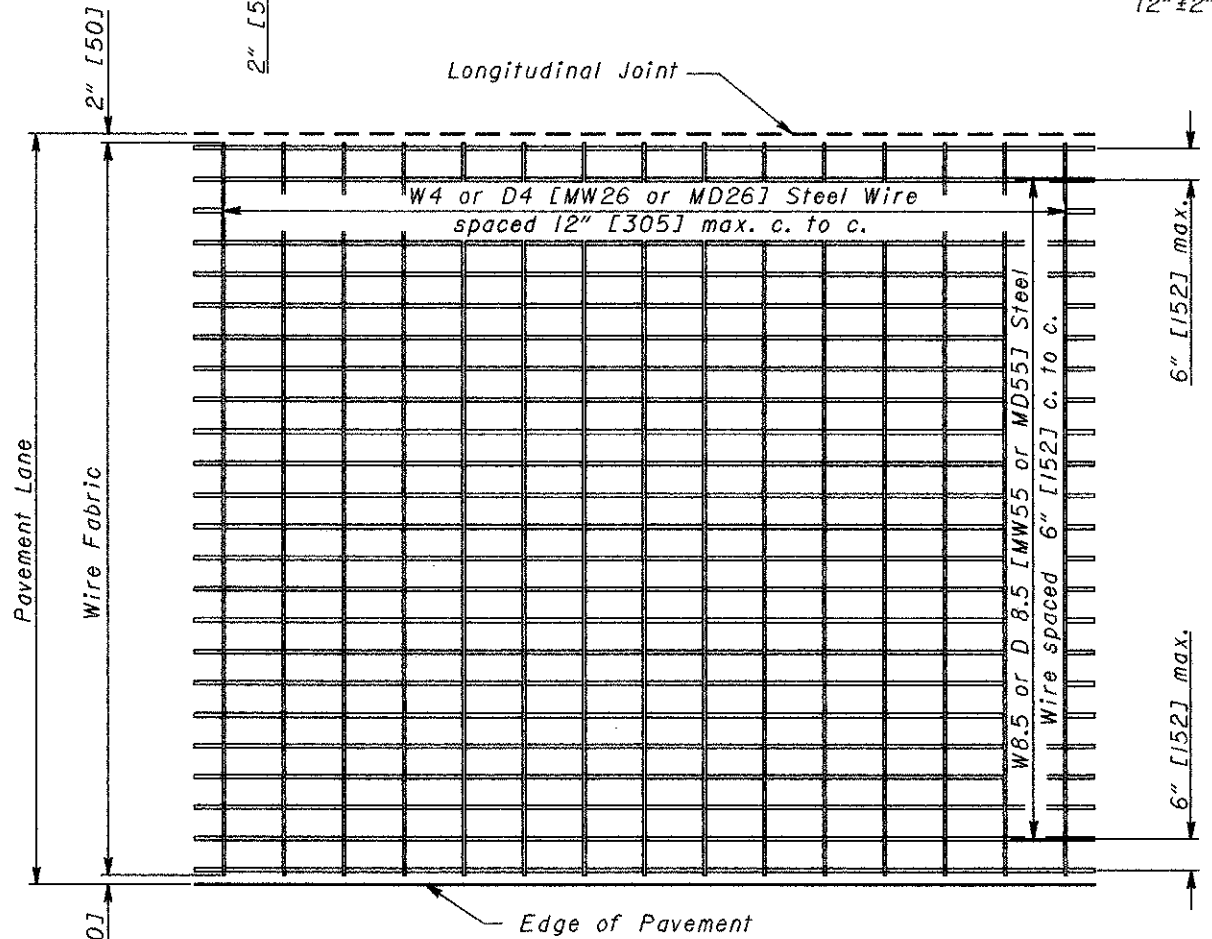
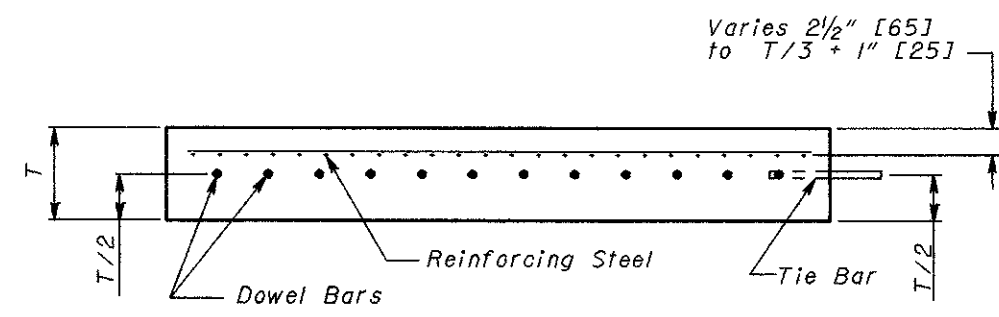


PLAN



WIRE FABRIC DETAIL



SECTION A-A

NOTES

STEEL REINFORCING: In normal or wider lane widths, reinforcing may consist of two units with an approved longitudinal hinge. The hinge shall consist of W4 or D4 [MW26 or MD26] steel wires connecting the two units such that the longitudinal members on either side of the hinge will be properly spaced when the reinforcing is in the final position.

Reinforcing steel in final position shall not touch either the dowels or tie bars.

THIS DRAWING REPLACES BP-1.1M DATED 10-28-94.

NUMBER BP-1.1	STANDARD ROADWAY CONSTRUCTION DRAWING	ROADWAY ENGINEERING SERVICES	STDS. ENGR. M. EVGINS	REVISIONS	OHIO DEPARTMENT OF TRANSPORTATION
			DRAWN D. Focke		DATE 10-28-00