

LAKE COUNTY  
 CITY OF MENTOR & VILLAGE OF KIRTLAND HILLS  
 T = 9&10 N, R = 9 W



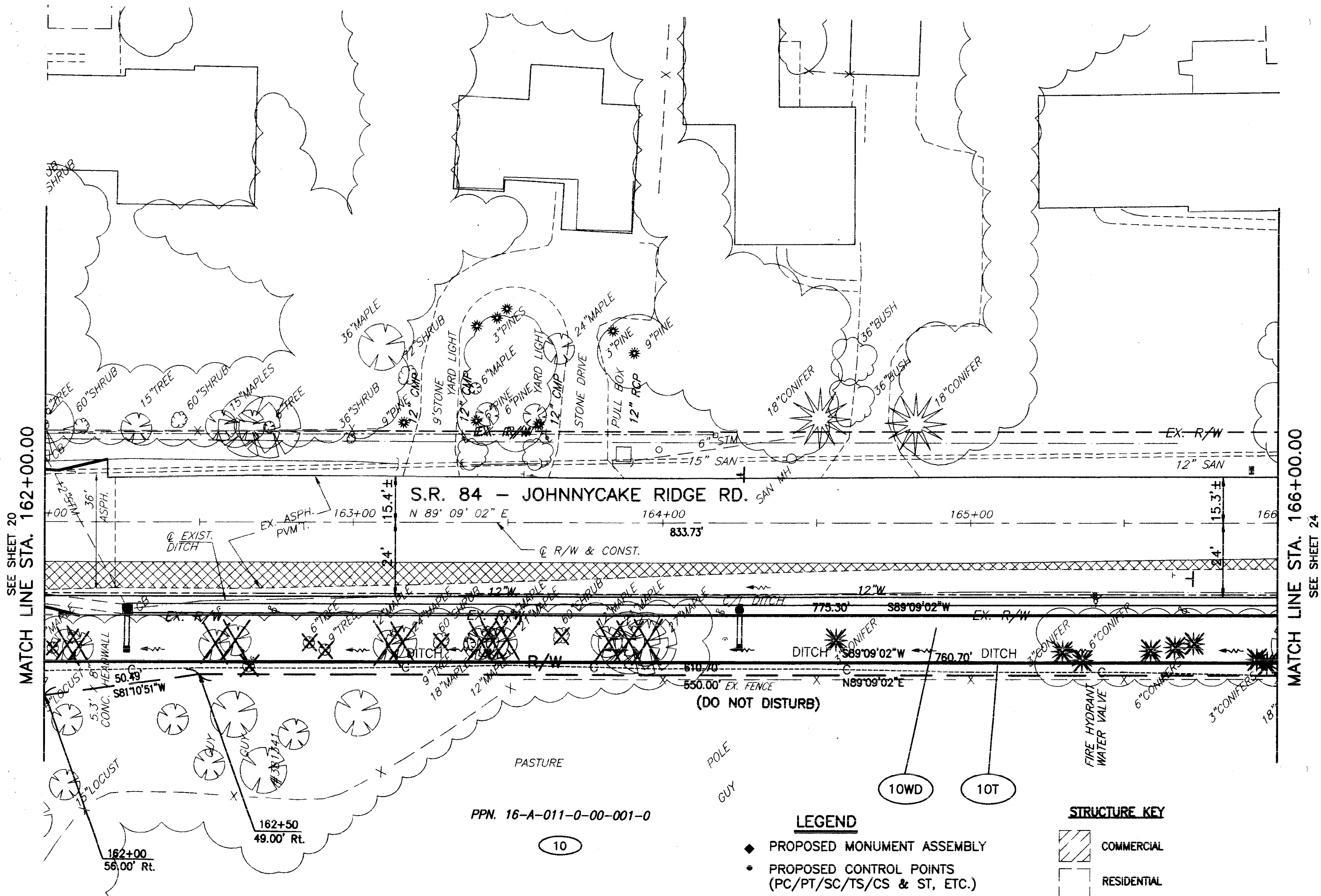
R/W DESIGNER  
P.S.L.  
R/W REVIEWER  
W.D.B.

PID NO.  
**9331**

RIGHT OF WAY PLAN  
 STA. 161+16.27 TO STA. 166+00.00

LAK-IR90/SR615-9.26/1.51

23/24  
 392  
 393



- LEGEND**
- ◆ PROPOSED MONUMENT ASSEMBLY
  - PROPOSED CONTROL POINTS (PC/PT/SC/TS/CS & ST, ETC.)

- STRUCTURE KEY**
- COMMERCIAL
  - RESIDENTIAL

THE LOCATION & WIDTH OF THE EXISTING LIMITED ACCESS & RIGHT OF WAY LINES WERE ESTABLISHED USING ODOT PROJECT LAK-1-6.97 (1960) & COUNTY RECORDS.

ALL BEARINGS FOR THIS PROJECT ARE BASED ON THE ODOT PROJECT LAK-1-6.97 ( APRIL 1960 )

REV	DATE	DESCRIPTION

DATE COMPLETED:

H:\CT\97125\SDSK\RW\PRERW6.dwg 08/23/2000 09:40:04 AM EDT