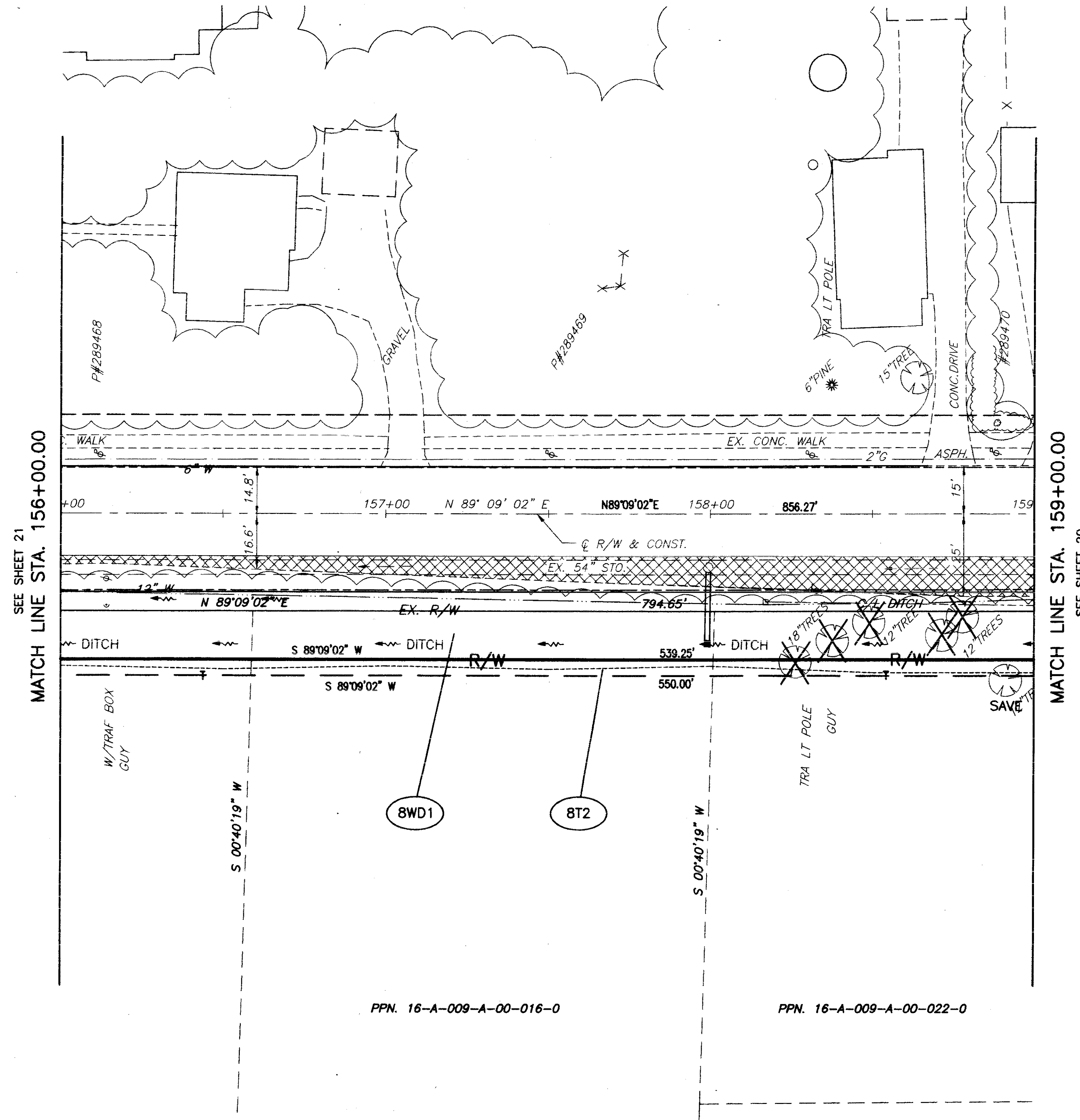


LAKE COUNTY
 CITY OF MENTOR & VILLAGE OF KIRTLAND HILLS
 T = 9&10 N, R = 9 W



SEE SHEET 21
 MATCH LINE STA. 156+00.00

MATCH LINE STA. 159+00.00
 SEE SHEET 20

STRUCTURE KEY
 COMMERCIAL
 RESIDENTIAL

THE LOCATION & WIDTH OF THE EXISTING LIMITED ACCESS & RIGHT OF WAY LINES WERE ESTABLISHED USING ODOT PROJECT LAK-1-6.97 (1960) & COUNTY RECORDS.

ALL BEARINGS FOR THIS PROJECT ARE BASED ON THE ODOT PROJECT LAK-1-6.97 (APRIL 1960)

REV	DATE	DESCRIPTION



PID NO. 9331
 R/W DESIGNER P.S.L.
 R/W REVIEWER W.D.B.

RIGHT OF WAY PLAN
 STA. 156+00.00 TO STA. 159+00.00

LAK-IR90/SR615-9.26/1.51

22/24

392
 393