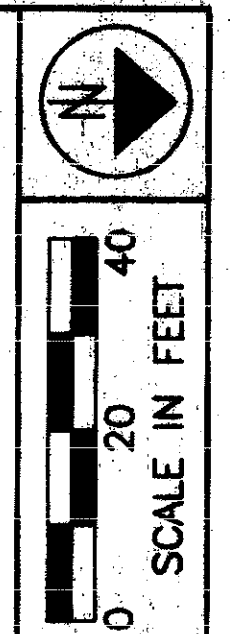


LAKE COUNTY
 CITY OF MENTOR & VILLAGE OF KIRTLAND HILLS
 T = 9&10 N, R = 9 W



PID NO. 9331

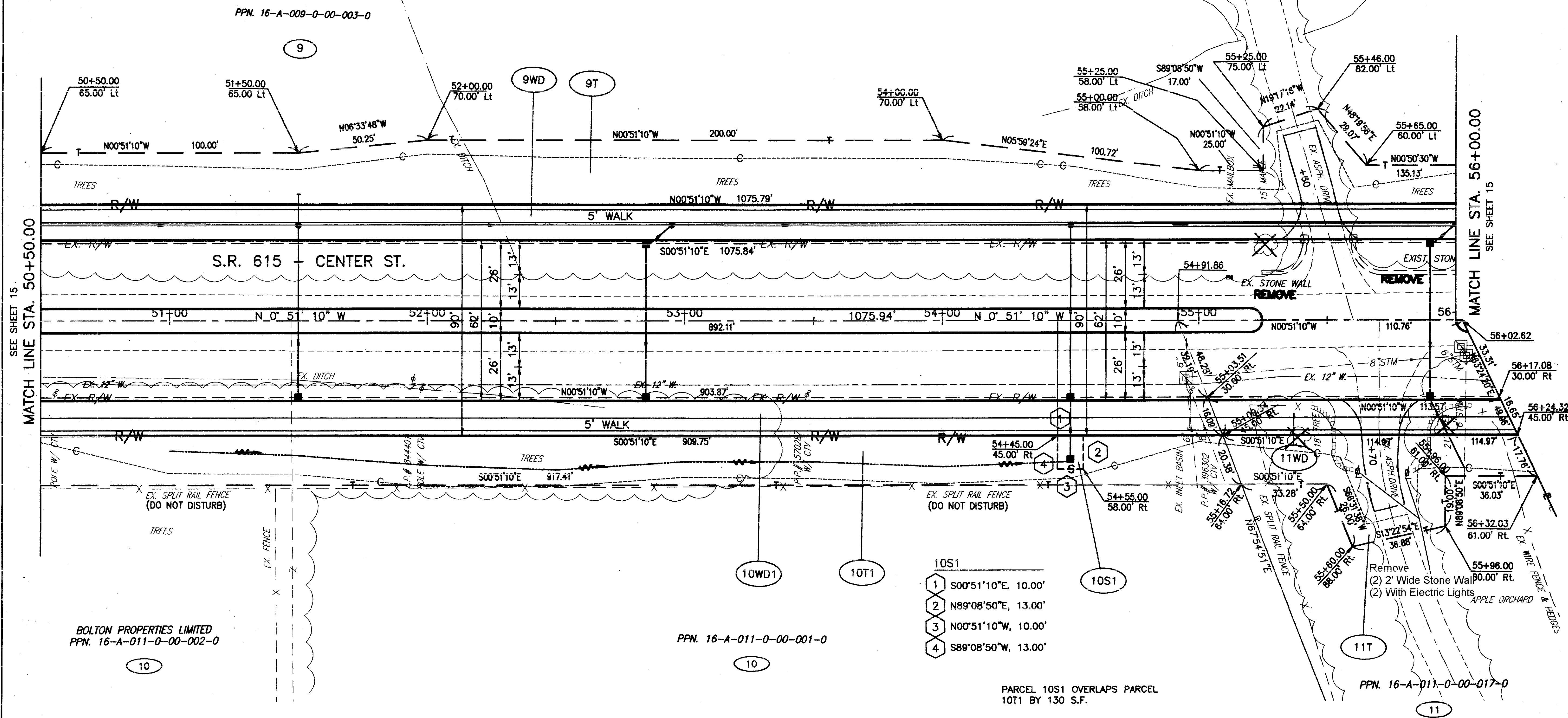
R/W DESIGNER P.S.L.
 R/W REVIEWER W.D.B.

RIGHT OF WAY PLAN
 STA. 50+50.00 TO STA. 56+00.00

LAK-IR90/SR615-9.26/1.51

16/24

386
393



H:\CT\97125\SDSK\RW\PRERW4.dwg 08/21/2000 02:23:06 PM EDT

BOLTON PROPERTIES LIMITED
 PPN. 16-A-011-0-00-002-0

PPN. 16-A-011-0-00-001-0

PPN. 16-A-011-0-00-017-0

- 10S1
- 1 S00°51'10"E, 10.00'
 - 2 N89°08'50"E, 13.00'
 - 3 N00°51'10"W, 10.00'
 - 4 S89°08'50"W, 13.00'

PARCEL 10S1 OVERLAPS PARCEL 10T1 BY 130 S.F.

THE LOCATION & WIDTH OF THE EXISTING LIMITED ACCESS & RIGHT OF WAY LINES WERE ESTABLISHED USING ODOT PROJECT LAK-1-6.97 (1960) & COUNTY RECORDS.

ALL BEARINGS FOR THIS PROJECT ARE BASED ON THE ODOT PROJECT LAK-1-6.97 (APRIL 1960)

REV	DATE	DESCRIPTION
1	3/6/2001	Added the two lights at the end of the two stone walls. Added the note "Remove, (2) 2' Wide Stone Walls (2) With Electric Lights"
DATE COMPLETED:		