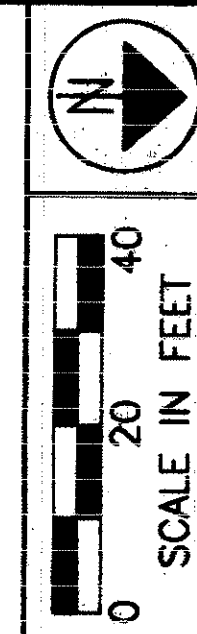


LAKE COUNTY
 CITY OF MENTOR & VILLAGE OF KIRTLAND HILLS
 T = 9&10 N, R = 9 W



PID NO.
9331

R/W DESIGNER
P.S.L.
R/W REVIEWER
W.D.B.

RIGHT OF WAY PLAN
 STA. 45+00.00 TO STA. 50+50.00

LAK-1R90/SR615-9.26/1.51

15 / 24

385
393

PPN. 16-A-009-0-00-004-0

9

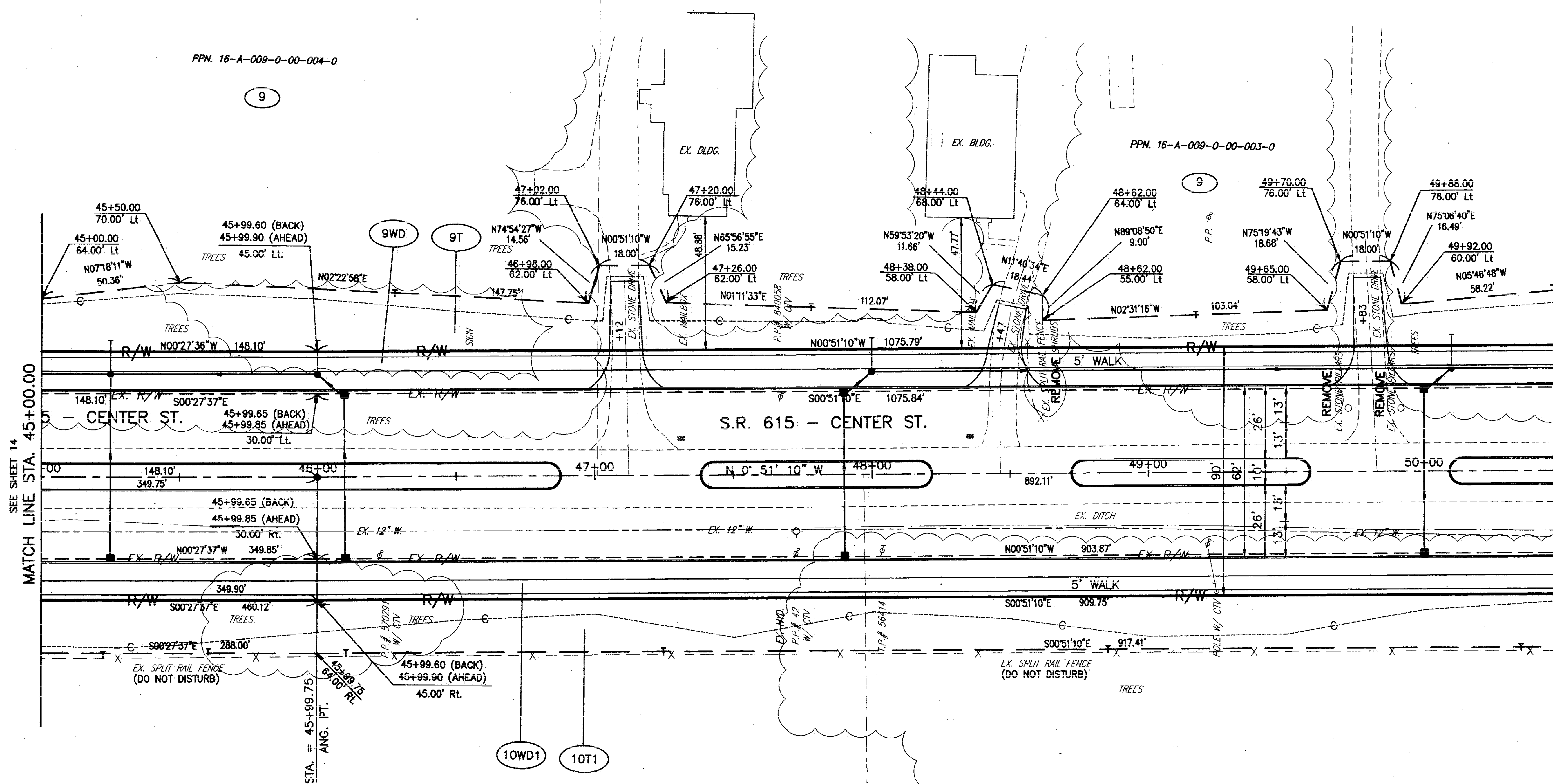
PPN. 16-A-009-0-00-003-0

9

PPN. 16-A-011-0-00-002-0

10

THE LOCATION & WIDTH OF THE EXISTING LIMITED ACCESS & RIGHT OF WAY LINES WERE ESTABLISHED USING ODOT PROJECT LAK-1-6.97 (1960) & COUNTY RECORDS.



- LEGEND**
- ◆ PROPOSED MONUMENT ASSEMBLY
 - PROPOSED CONTROL POINTS (PC/PT/SC/TS/CS & ST, ETC.)

- STRUCTURE KEY**
- COMMERCIAL
 - RESIDENTIAL

ALL BEARINGS FOR THIS PROJECT ARE BASED ON THE ODOT PROJECT LAK-1-6.97 (APRIL 1960)

REV	DATE	DESCRIPTION
1	5/2001	REVISIONS TO PARCEL 10
DATE COMPLETED:		

H:\CT\97125\SDSK\RW\PRERW3.dwg 05/09/2001 01:57:22 PM PM EDT