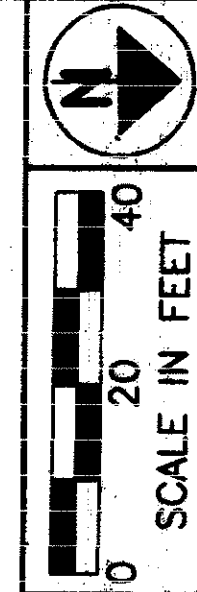


LAKE COUNTY
 CITY OF MENTOR & VILLAGE OF KIRTLAND HILLS
 T = 9&10 N, R = 9 W



PID NO. 9331
 R/W DESIGNER P.S.L.
 R/W REVIEWER W.D.B.

RIGHT OF WAY PLAN
 STA. 39+50 TO STA. 45+00

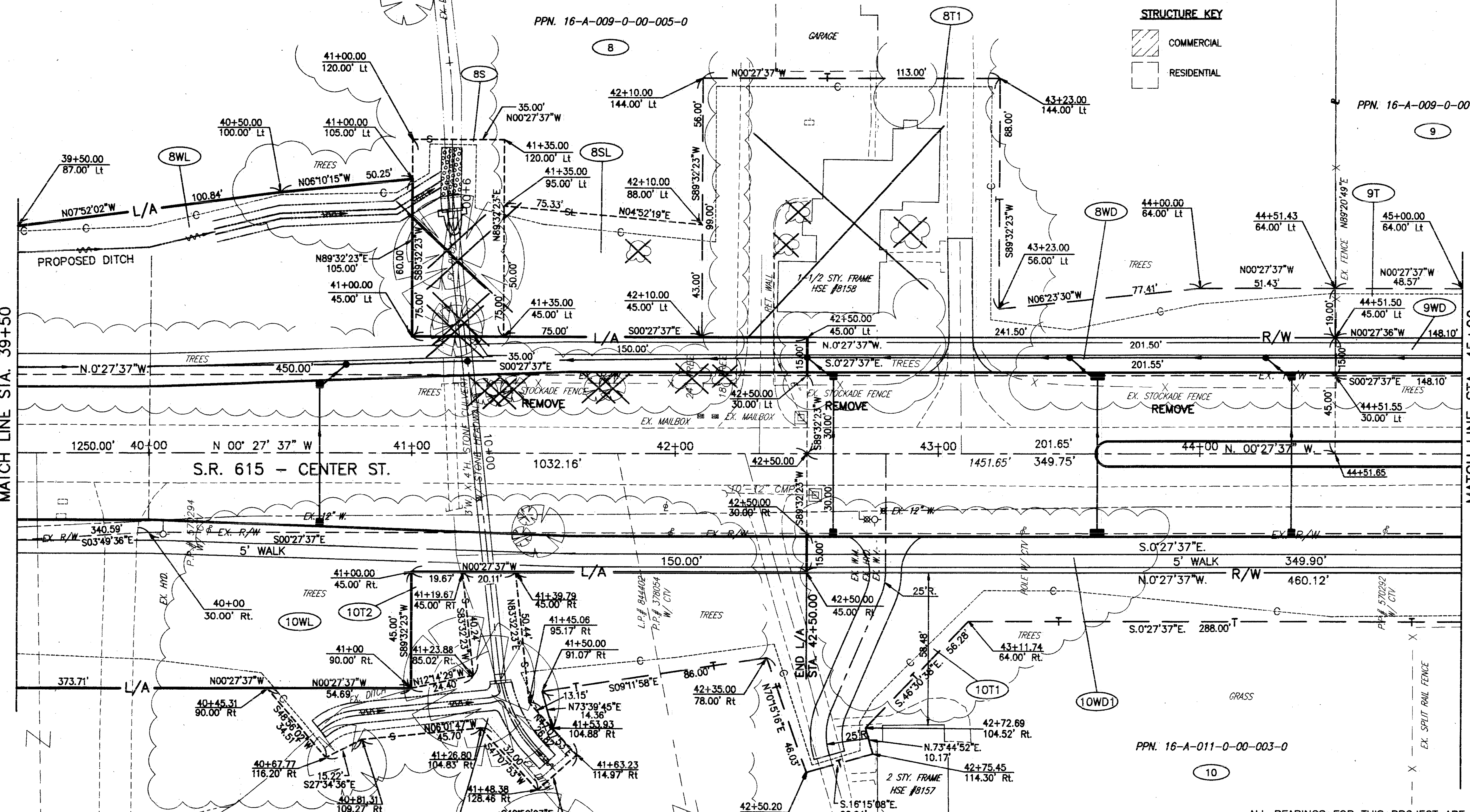
LAK-IR90/SR615-9.26/1.51

14/24
 384
 393

STRUCTURE KEY

COMMERCIAL

RESIDENTIAL



SEE SHEET 13
 MATCH LINE STA. 39+50

MATCH LINE STA. 45+00
 SEE SHEET 15

S.R. 615 - CENTER ST.

ALL BEARINGS FOR THIS PROJECT ARE BASED ON THE ODOT PROJECT LAK-1-6.97 (APRIL 1960)

REV	DATE	DESCRIPTION
1	5/2001	REVISED LIMITS OF L/A, REVISED PARCELS
		8WL, 8WD, 10WL & 10WD
		COMBINED PARCEL 10T1 & 10T2
		RENAMED PARCEL 10T3 TO 10T2
		ELIMINATED PARCEL 10V & IT'S PROPOSED
		PROPERTY LINE
		DATE COMPLETED:

THE LOCATION & WIDTH OF THE EXISTING LIMITED ACCESS & RIGHT OF WAY LINES WERE ESTABLISHED USING ODOT PROJECT LAK-1-6.97 (1960) & COUNTY RECORDS.

H:\CT\97125\SDSK\PRERW2.DWG 5/06/01 (model space/no xref)