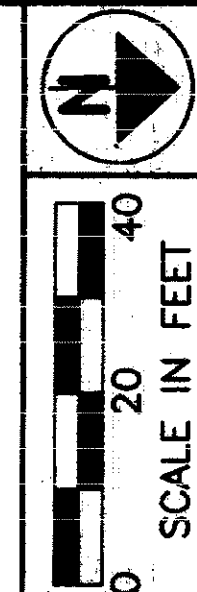


LAKE COUNTY  
 CITY OF MENTOR & VILLAGE OF KIRTLAND HILLS  
 T = 9 & 10 N, R = 9 W



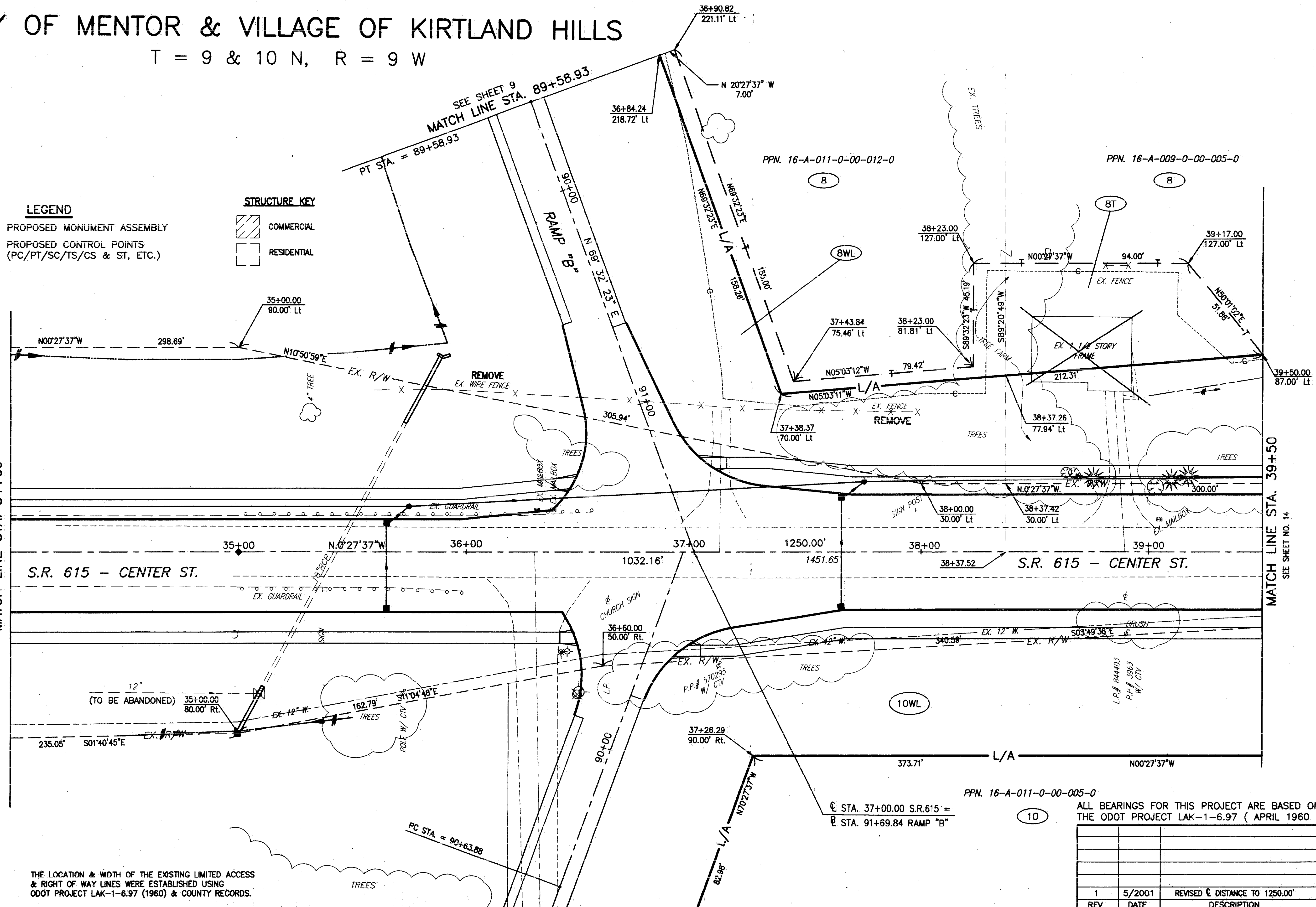
PID NO. 9331  
 R/W DESIGNER P.S.L.  
 R/W REVIEWER W.D.B.

RIGHT OF WAY PLAN  
 STA. 34+00 TO STA. 39+50

LAK-IR90/SR615-9.26/1.51

13/24  
 383  
 393

- LEGEND**
- ◆ PROPOSED MONUMENT ASSEMBLY
  - PROPOSED CONTROL POINTS (PC/PT/SC/TS/CS & ST, ETC.)
- STRUCTURE KEY**
- ▨ COMMERCIAL
  - RESIDENTIAL



THE LOCATION & WIDTH OF THE EXISTING LIMITED ACCESS & RIGHT OF WAY LINES WERE ESTABLISHED USING ODOT PROJECT LAK-1-6.97 (1960) & COUNTY RECORDS.

PPN. 16-A-011-0-00-005-0  
 STA. 37+00.00 S.R.615 =  
 STA. 91+69.84 RAMP "B"

ALL BEARINGS FOR THIS PROJECT ARE BASED ON THE ODOT PROJECT LAK-1-6.97 (APRIL 1960)

REV	DATE	DESCRIPTION
1	5/2001	REVISED E DISTANCE TO 1250.00'
DATE COMPLETED:		

H:\CT\97125\SDSK\PRRW.DWG 5/09/01