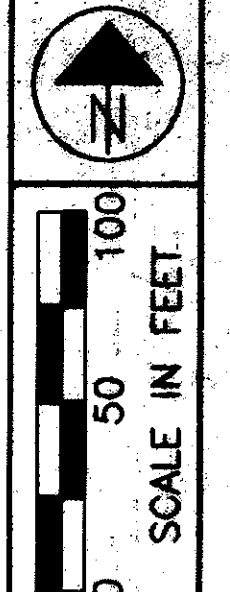


LAKE COUNTY
 CITY OF MENTOR & VILLAGE OF KIRTLAND HILLS
 T = 9 & 10 N, R = 9 W



PID NO. 9331
 R/W DESIGNER P.S.L.
 R/W REVIEWER W.D.B.

RIGHT OF WAY PLAN

LAK-IR90/SR615-9.26/1.51

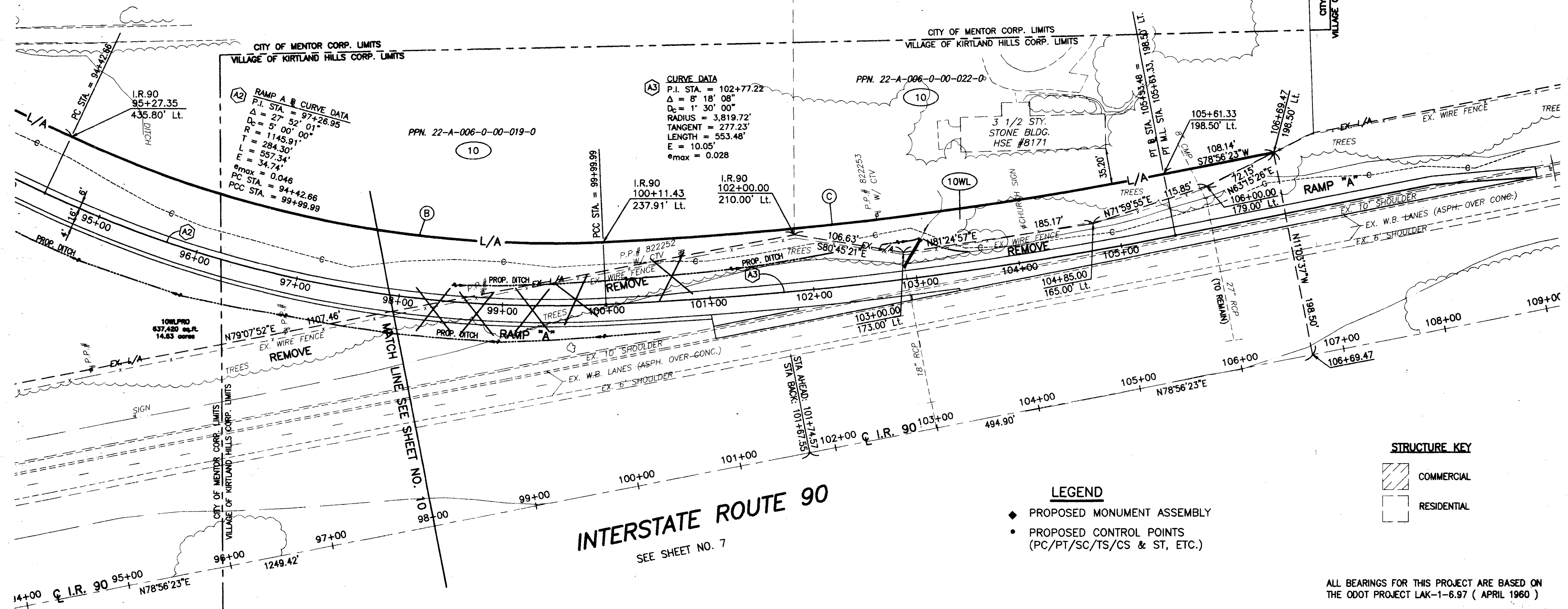
11/24

382
 393

BOLTON PROPERTIES LIMITED
 PPN. 16-A-011-0-00-005-0

10

- (B) CURVE DATA
 R = 1085.91'
 Δ = 27°52'01"
 L = 528.15'
 T = 269.41'
 C = 522.96'
 N.78°49'29"W
- (C) CURVE DATA
 R = 3759.72'
 Δ = 08°18'08"
 L = 544.79'
 T = 272.87'
 C = 544.31'
 S.83°05'27"W



(A3) CURVE DATA
 P.I. STA. = 102+77.22
 Δ = 8° 18' 08"
 Dc = 1' 30' 00"
 RADIUS = 3,819.72'
 TANGENT = 277.23'
 LENGTH = 553.48'
 E = 10.05'
 e_{max} = 0.028

(A2) RAMP A & B CURVE DATA
 P.I. STA. = 97+26.95
 Δ = 27° 52' 01"
 R = 1145.91'
 T = 284.30'
 L = 557.34'
 E = 34.74'
 e_{max} = 0.046
 PC STA. = 94+42.66
 PCC STA. = 99+99.99

INTERSTATE ROUTE 90
 SEE SHEET NO. 7

- LEGEND**
- ◆ PROPOSED MONUMENT ASSEMBLY
 - PROPOSED CONTROL POINTS (PC/PT/SC/TS/CS & ST, ETC.)

STRUCTURE KEY

- COMMERCIAL
- RESIDENTIAL

ALL BEARINGS FOR THIS PROJECT ARE BASED ON THE ODOT PROJECT LAK-1-6.97 (APRIL 1960)

NOTE: ALL STATION & OFFSETS USED FOR RIGHT OF WAY TAKES ARE BASED OFF OF I.R. 90 & S.R. 615. RAMP A STATIONING DOES NOT APPLY.

THE LOCATION & WIDTH OF THE EXISTING LIMITED ACCESS & RIGHT OF WAY LINES WERE ESTABLISHED USING ODOT PROJECT LAK-1-6.97 (1960) & COUNTY RECORDS.

REV	DATE	DESCRIPTION

DATE COMPLETED:

H:\CT\97125\SDSK\RW\10LA2.dwg 08/17/2000 03:03:52 PM EDT