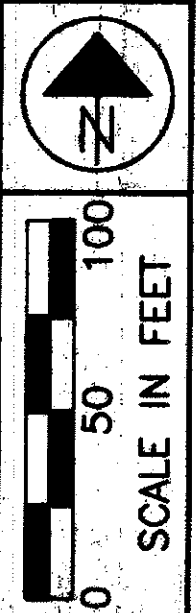


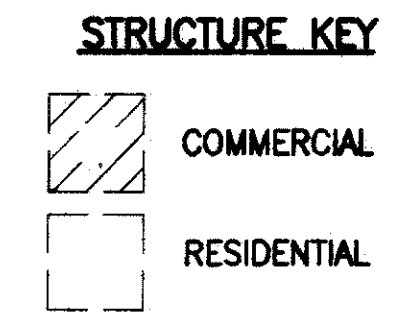
LAKE COUNTY  
**CITY OF MENTOR & VILLAGE OF KIRTLAND HILLS**  
 T = 9 & 10 N, R = 9 W



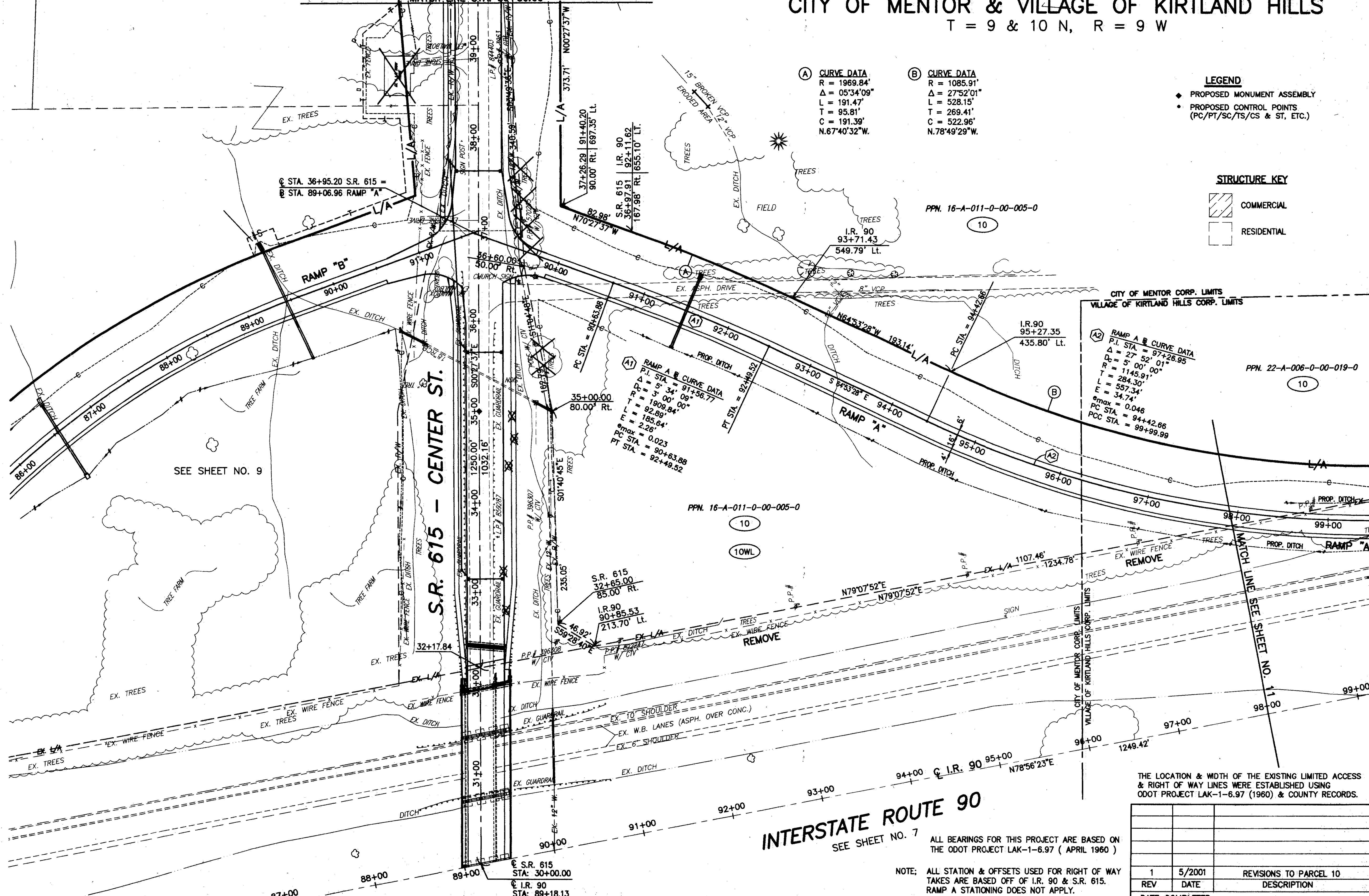
SEE SHEET NO. 14  
 MATCH LINE STA. 39+50.00

- (A) CURVE DATA**  
 R = 1969.84'  
 Δ = 05°34'09"  
 L = 191.47'  
 T = 95.81'  
 C = 191.39'  
 N.67°40'32"W.
- (B) CURVE DATA**  
 R = 1085.91'  
 Δ = 27°52'01"  
 L = 528.15'  
 T = 269.41'  
 C = 522.96'  
 N.78°49'29"W.

- LEGEND**
- ◆ PROPOSED MONUMENT ASSEMBLY
  - PROPOSED CONTROL POINTS (PC/PT/SC/TS/CS & ST, ETC.)



PID NO. **9331**  
 R/W DESIGNER P.S.L. R/W REVIEWER W.D.B.



**CITY OF MENTOR CORP. LIMITS**  
**VILLAGE OF KIRTLAND HILLS CORP. LIMITS**

**(A2) RAMP A & B CURVE DATA**  
 P.I. STA. = 97+26.95  
 Δ = 27°52'01"  
 R = 1145.91'  
 T = 284.30'  
 L = 557.34'  
 E = 34.74'  
 e<sub>max</sub> = 0.046  
 PC STA. = 94+42.66  
 PCC STA. = 99+99.99

PPN. 22-A-006-0-00-019-0 (10)

**(A1) RAMP A CURVE DATA**  
 P.I. STA. = 91+56.77  
 Δ = 5°34'09"  
 R = 1909.84'  
 T = 185.64'  
 L = 185.64'  
 E = 2.26'  
 e<sub>max</sub> = 0.023  
 PC STA. = 90+63.88  
 PT STA. = 92+49.52

S.R. 615  
 STA. 32+65.00  
 85.00' Rt.

I.R. 90  
 STA. 90+85.53  
 213.70' Lt.

**INTERSTATE ROUTE 90**  
 SEE SHEET NO. 7

NOTE: ALL STATION & OFFSETS USED FOR RIGHT OF WAY TAKES ARE BASED OFF OF I.R. 90 & S.R. 615. RAMP A STATIONING DOES NOT APPLY.

ALL BEARINGS FOR THIS PROJECT ARE BASED ON THE ODOT PROJECT LAK-1-6.97 (APRIL 1960)

THE LOCATION & WIDTH OF THE EXISTING LIMITED ACCESS & RIGHT OF WAY LINES WERE ESTABLISHED USING ODOT PROJECT LAK-1-6.97 (1960) & COUNTY RECORDS.

REV	DATE	DESCRIPTION
1	5/2001	REVISIONS TO PARCEL 10
DATE COMPLETED:		

RIGHT OF WAY PLAN

LAK-IR90/SR615-9.26/1.51

10 / 24

381  
 393

H:\CT\97125\SDSK\RW\10A.dwg 05/09/2001 02:04:56 PM EDT