

LAKE COUNTY
 CITY OF MENTOR & VILLAGE OF KIRTLAND HILLS
 T = 9 & 10 N, R = 9 W

CURVE DATA (A)	CURVE DATA (B)	CURVE DATA (C)	CURVE DATA (D)
R = 821.47'	R = 1014.93'	R = 1035.93'	R = 1014.93'
Δ = 26°00'12"	Δ = 24°17'37"	Δ = 1°41'38"	Δ = 1°41'38"
L = 372.82'	L = 430.33'	L = 30.63'	L = 30.01'
T = 189.68'	T = 218.45'	T = 15.31'	T = 15.00'
C = 369.63'	C = 427.12'	C = 30.62'	C = 30.00'
S.58°14'52"W.	S.57°23'34"W.	S.68°41'34"W.	N.68°41'34"E.

(B1) RAMP B @ CURVE DATA

P.I. STA. 79+53.91
Δ = 26° 00' 12" LT.
D _c = 6° 30' 00"
R _c = 881.47'
L _c = 199.89'
T _c = 6° 29' 48"
LT = 133.35'
ST = 68.71'
L ₆ = 400.05'
T ₁ = 353.87'
T ₂ = 280.44'
SC = 37.67'
ε _{max} = 0.057
TS STA. 76+00.05
SC STA. 77+99.94
PT STA. 81+99.99

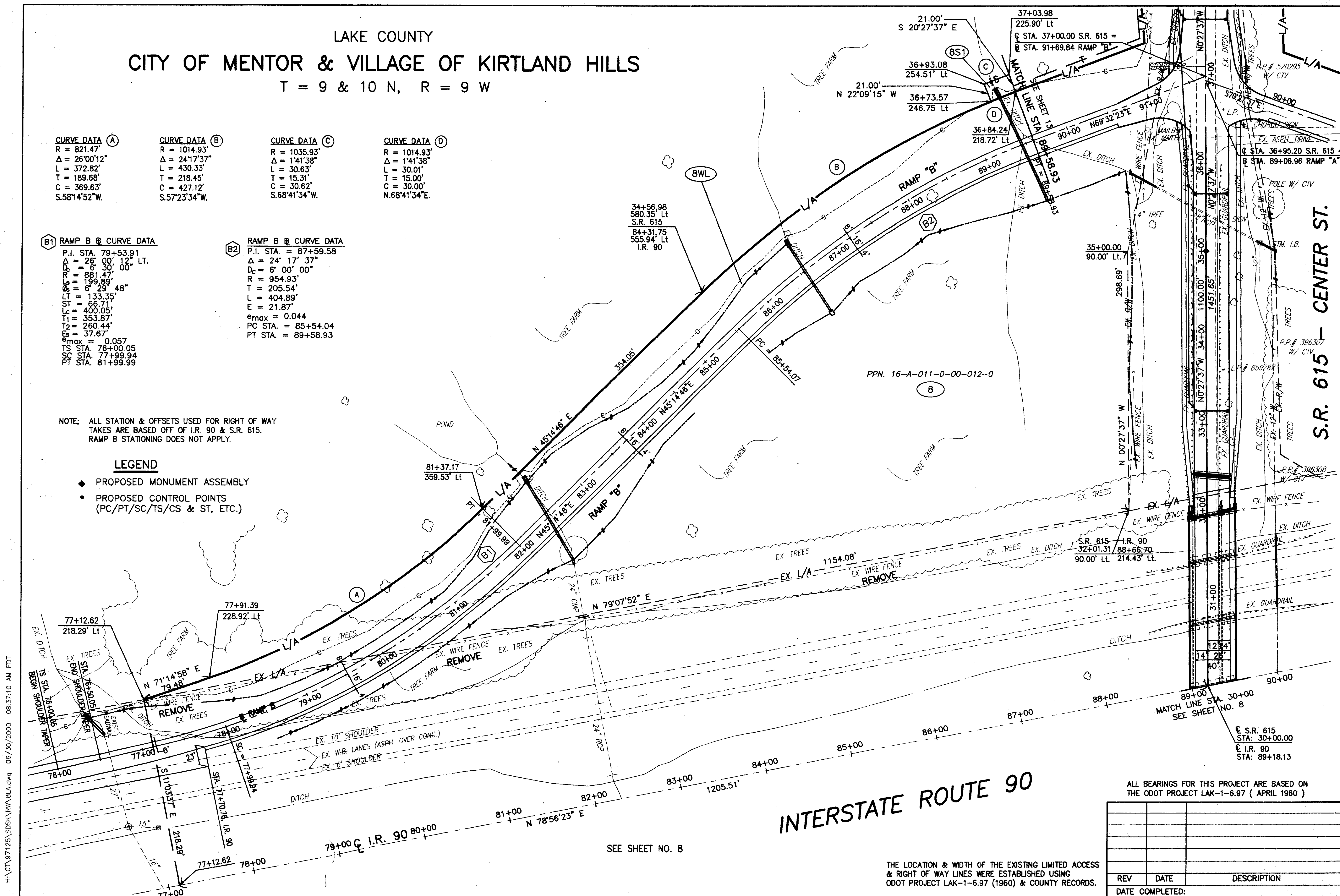
(B2) RAMP B @ CURVE DATA

P.I. STA. = 87+59.58
Δ = 24° 17' 37"
D _c = 6° 00' 00"
R = 954.93'
T = 205.54'
L = 404.89'
E = 21.87'
ε _{max} = 0.044
PC STA. = 85+54.04
PT STA. = 89+58.93

NOTE: ALL STATION & OFFSETS USED FOR RIGHT OF WAY TAKES ARE BASED OFF OF I.R. 90 & S.R. 615. RAMP B STATIONING DOES NOT APPLY.

LEGEND

- ◆ PROPOSED MONUMENT ASSEMBLY
- PROPOSED CONTROL POINTS (PC/PT/SC/TS/CS & ST, ETC.)



INTERSTATE ROUTE 90

SEE SHEET NO. 8

THE LOCATION & WIDTH OF THE EXISTING LIMITED ACCESS & RIGHT OF WAY LINES WERE ESTABLISHED USING ODOT PROJECT LAK-1-6.97 (1960) & COUNTY RECORDS.

ALL BEARINGS FOR THIS PROJECT ARE BASED ON THE ODOT PROJECT LAK-1-6.97 (APRIL 1960)

REV	DATE	DESCRIPTION

DATE COMPLETED:

N

SCALE IN FEET
0 50 100

R/W DESIGNER P.S.L. R/W REVIEWER W.D.B.

PID NO. 9331

RIGHT OF WAY PLAN

S.R. 615 - CENTER ST.

LAK-IR90/SR615-9.26/1.51

9 / 24

(380)
(393)

H:\CT\97125\SDSK\RW\BLA.dwg 06/30/2000 08:37:10 AM EDT