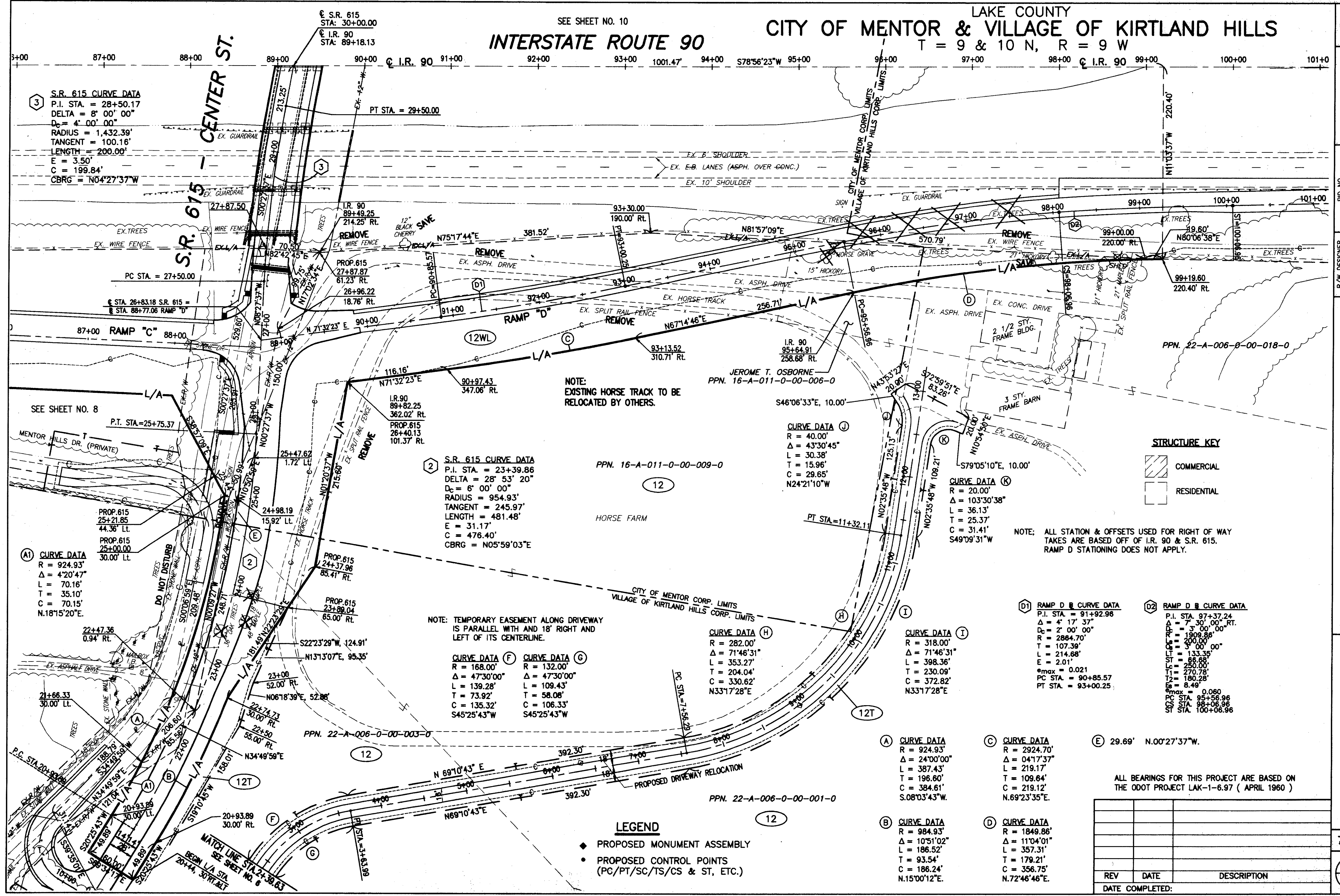
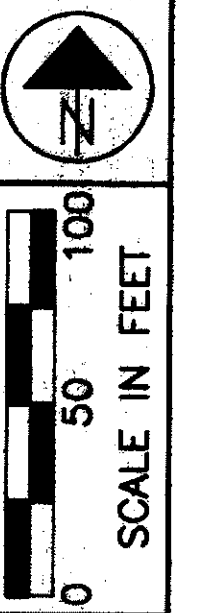


LAKE COUNTY
CITY OF MENTOR & VILLAGE OF KIRTLAND HILLS

INTERSTATE ROUTE 90

T = 9 & 10 N, R = 9 W

SEE SHEET NO. 10



3 S.R. 615 CURVE DATA
P.I. STA. = 28+50.17
DELTA = 8° 00' 00"
D_c = 4' 00' 00"
RADIUS = 1,432.39'
TANGENT = 100.16'
LENGTH = 200.00'
E = 3.50'
C = 199.84'
CBRG = N04°27'37"W

2 S.R. 615 CURVE DATA
P.I. STA. = 23+39.86
DELTA = 28° 53' 20"
D_c = 6' 00' 00"
RADIUS = 954.93'
TANGENT = 245.97'
LENGTH = 481.48'
E = 31.17'
C = 476.40'
CBRG = N05°59'03"E

A1 CURVE DATA
R = 924.93'
Δ = 4°20'47"
L = 70.16'
T = 35.10'
C = 70.15'
N.18°15'20"E.

NOTE: TEMPORARY EASEMENT ALONG DRIVEWAY IS PARALLEL WITH AND 18' RIGHT AND LEFT OF ITS CENTERLINE.

CURVE DATA (F)
R = 168.00'
Δ = 47°30'00"
L = 139.28'
T = 73.92'
C = 135.32'
S45°25'43"W

CURVE DATA (G)
R = 132.00'
Δ = 47°30'00"
L = 109.43'
T = 58.08'
C = 106.33'
S45°25'43"W

CURVE DATA (J)
R = 40.00'
Δ = 43°30'45"
L = 30.38'
T = 15.96'
C = 29.65'
N24°21'10"W

CURVE DATA (K)
R = 20.00'
Δ = 103°30'38"
L = 36.13'
T = 25.37'
C = 31.41'
S49°09'31"W

(D1) RAMP D @ CURVE DATA
P.I. STA. = 91+92.96
Δ = 4° 17' 37"
D_c = 2' 00' 00"
R = 2864.70'
T = 107.39'
L = 214.68'
E = 2.01'
e_{max} = 0.021
PC STA. = 90+85.57
PT STA. = 93+00.25

(D2) RAMP D @ CURVE DATA
P.I. STA. 97+37.24
Δ = 7° 30' 00" RT.
D_c = 3' 00' 00"
R = 1909.88'
T = 200.00'
L = 3' 00' 00"
ST = 66.88'
T₁ = 250.00'
T₂ = 270.78'
E = 180.28'
E = 8.49'
e_{max} = 0.060
PC STA. 95+56.96
CG STA. 98+06.96
ST STA. 100+06.96

(A) CURVE DATA
R = 924.93'
Δ = 24°00'00"
L = 387.43'
T = 196.60'
C = 384.61'
S.08°03'43"W.

(C) CURVE DATA
R = 2924.70'
Δ = 04°17'37"
L = 219.17'
T = 109.64'
C = 219.12'
N.69°23'35"E.

(E) 29.69' N.00°27'37"W.

(B) CURVE DATA
R = 984.93'
Δ = 10°51'02"
L = 186.52'
T = 93.54'
C = 186.24'
N.15°00'12"E.

(D) CURVE DATA
R = 1849.86'
Δ = 11°04'01"
L = 357.31'
T = 179.21'
C = 356.75'
N.72°46'46"E.

NOTE: EXISTING HORSE TRACK TO BE RELOCATED BY OTHERS.

LEGEND
◆ PROPOSED MONUMENT ASSEMBLY
• PROPOSED CONTROL POINTS (PC/PT/SC/TS/CS & ST, ETC.)

STRUCTURE KEY
[Hatched Box] COMMERCIAL
[White Box] RESIDENTIAL

NOTE: ALL STATION & OFFSETS USED FOR RIGHT OF WAY TAKES ARE BASED OFF OF I.R. 90 & S.R. 615. RAMP D STATIONING DOES NOT APPLY.

ALL BEARINGS FOR THIS PROJECT ARE BASED ON THE ODOT PROJECT LAK-1-6.97 (APRIL 1960)

| REV | DATE | DESCRIPTION |
|-----------------|------|-------------|
| | | |
| | | |
| | | |
| DATE COMPLETED: | | |

PID NO. 9331

R/W DESIGNER P.S.L.
R/W REVIEWER W.D.B.

RIGHT OF WAY PLAN

LAK-IR90/SR615-9.26/1.51

7 / 24

378
393

H:\CT\97125\SDSK\RM\12LA.DWG 08/25/2000 10:54:42 AM EDT