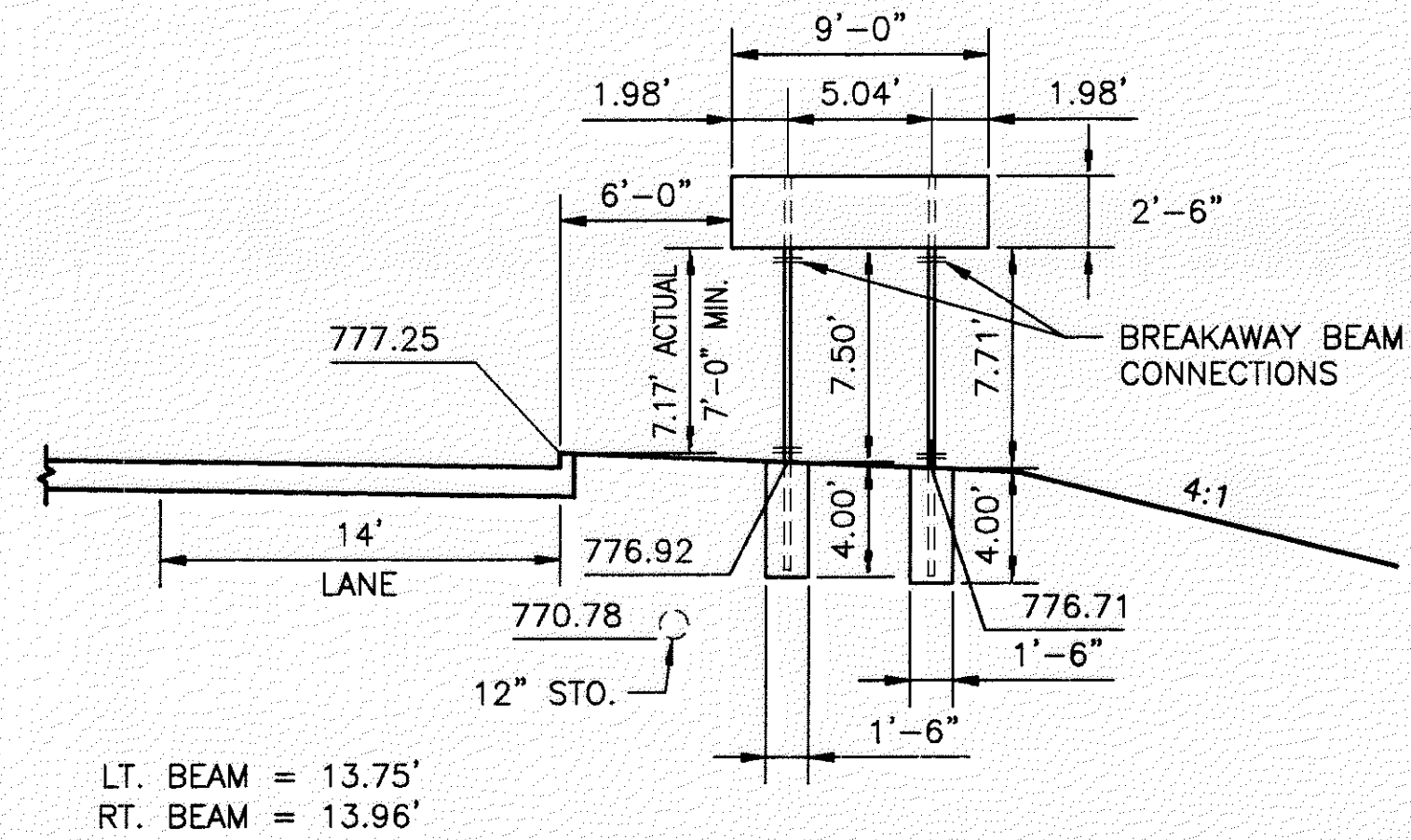


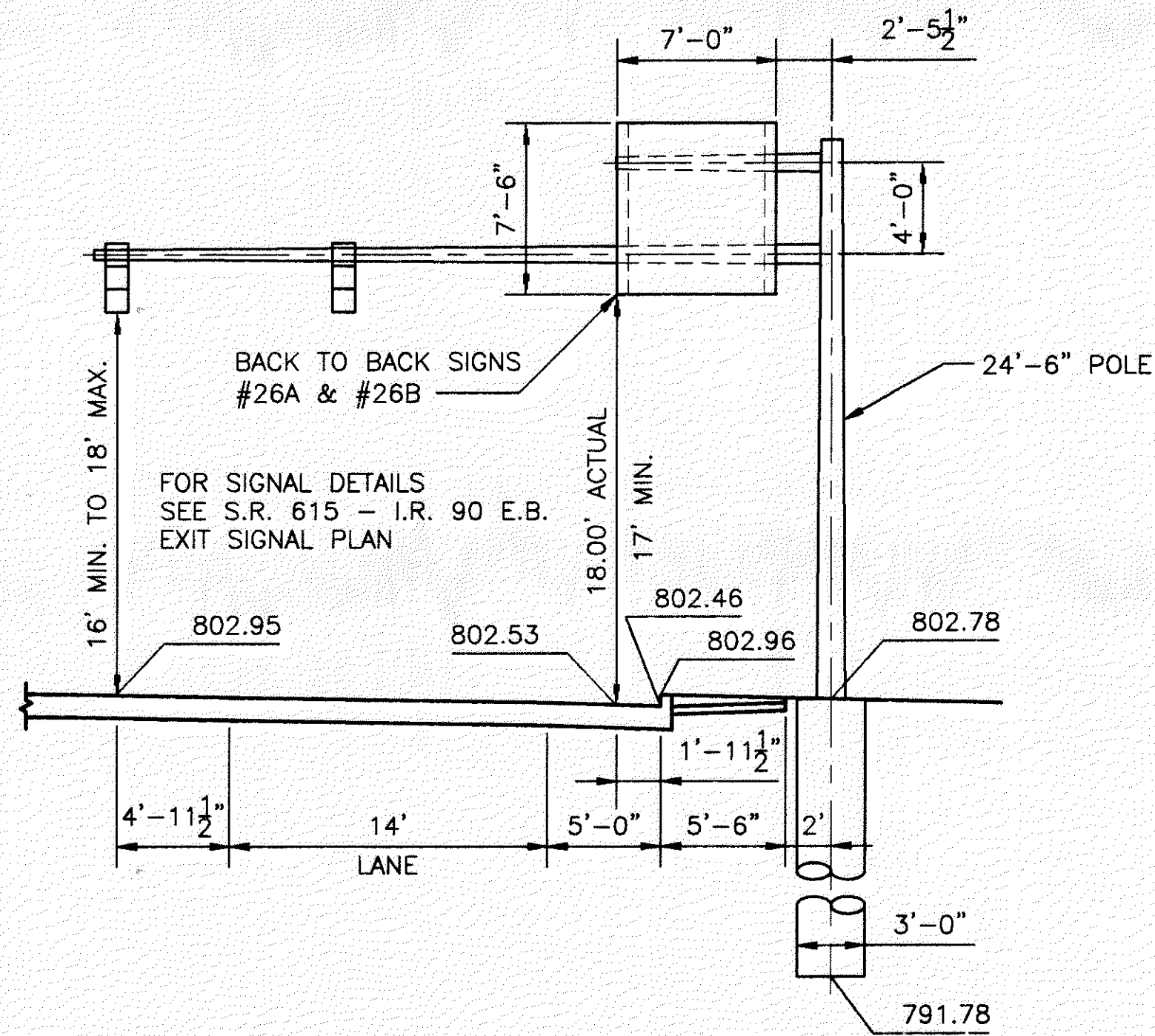
DATE: 10-09-01 - H:\CT\97125\SDSK\TRAFFIC\971250HS.DWG - PLOT SCALE = 1 : 1 (PLOT=1)



LT. BEAM = 13.75'  
RT. BEAM = 13.96'

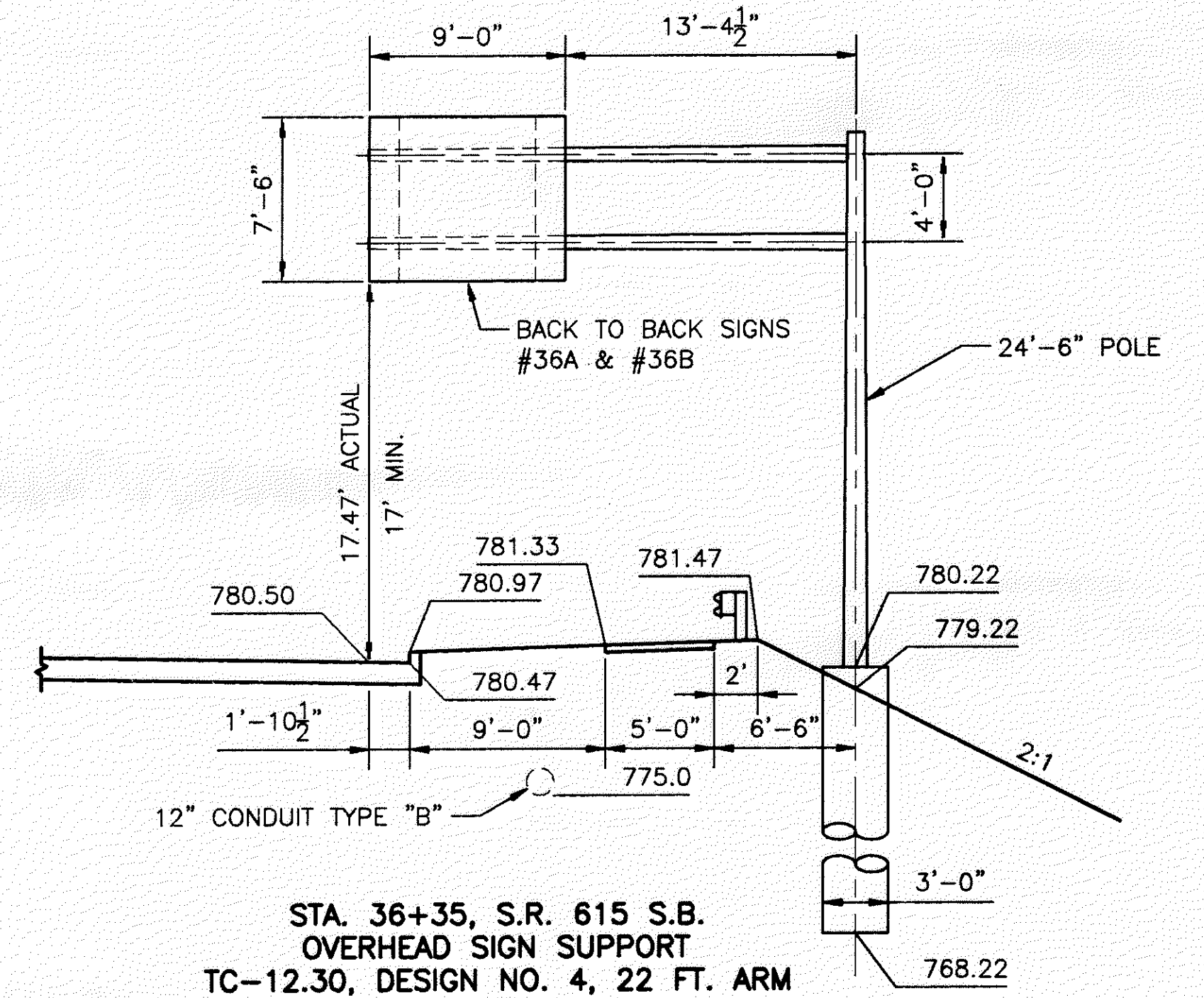
STA. 21+50, S.R. 615 N.B.  
2 - S4x7.7 BEAM SUPPORTS

6



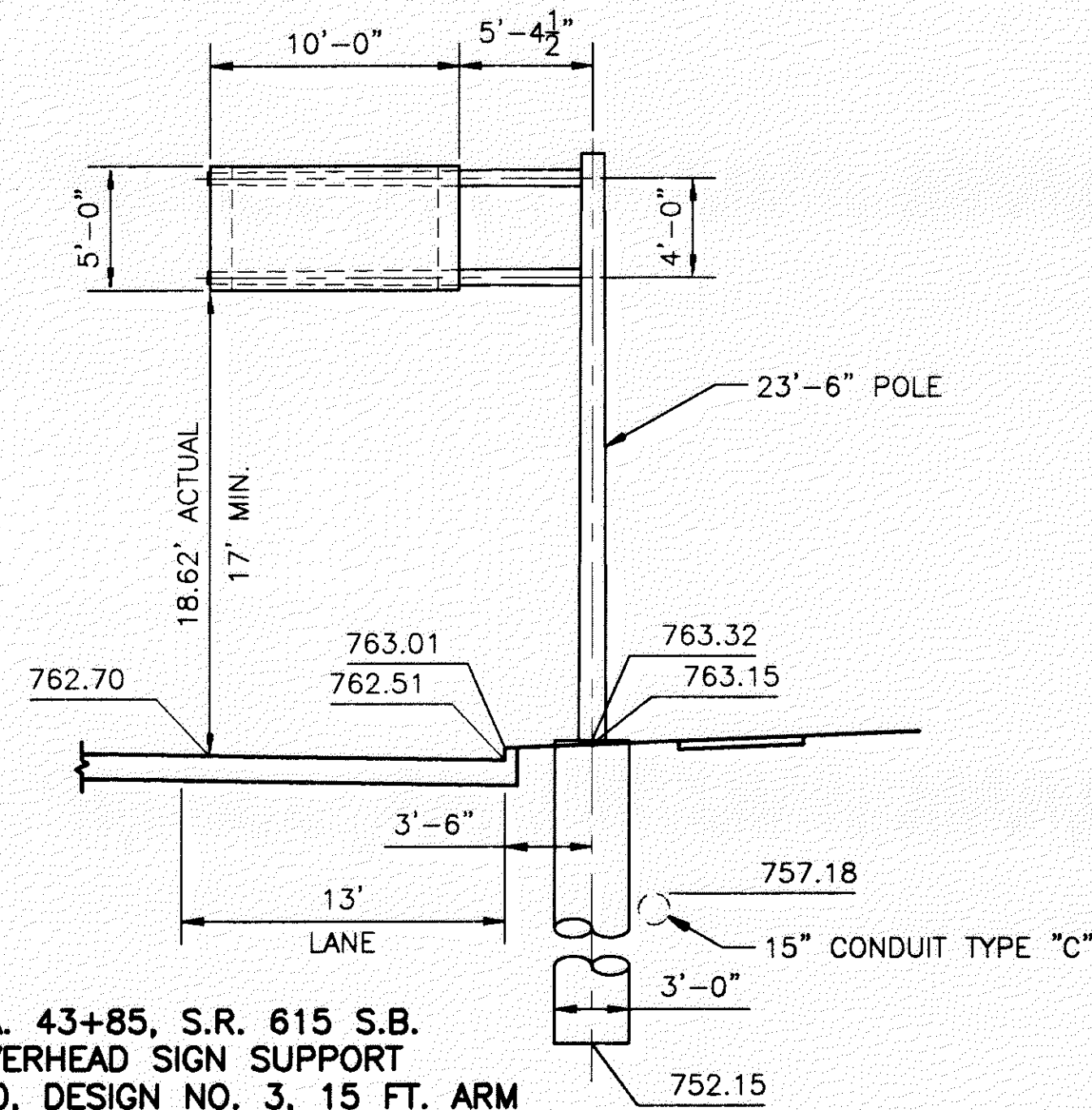
STA. 27+32, S.R. 615 N.B.  
SIGNAL & OVERHEAD SIGN SUPPORT, AS PER PLAN  
POLE, TC-12.30, DESIGN NO. 5, 24.5 FT. ARM  
UPPER ARM, TC-12.30, DESIGN NO. 5, 9 FT. ARM  
LOWER ARM, TC-81.20, DESIGN NO. 4, 32 FT. ARM

26



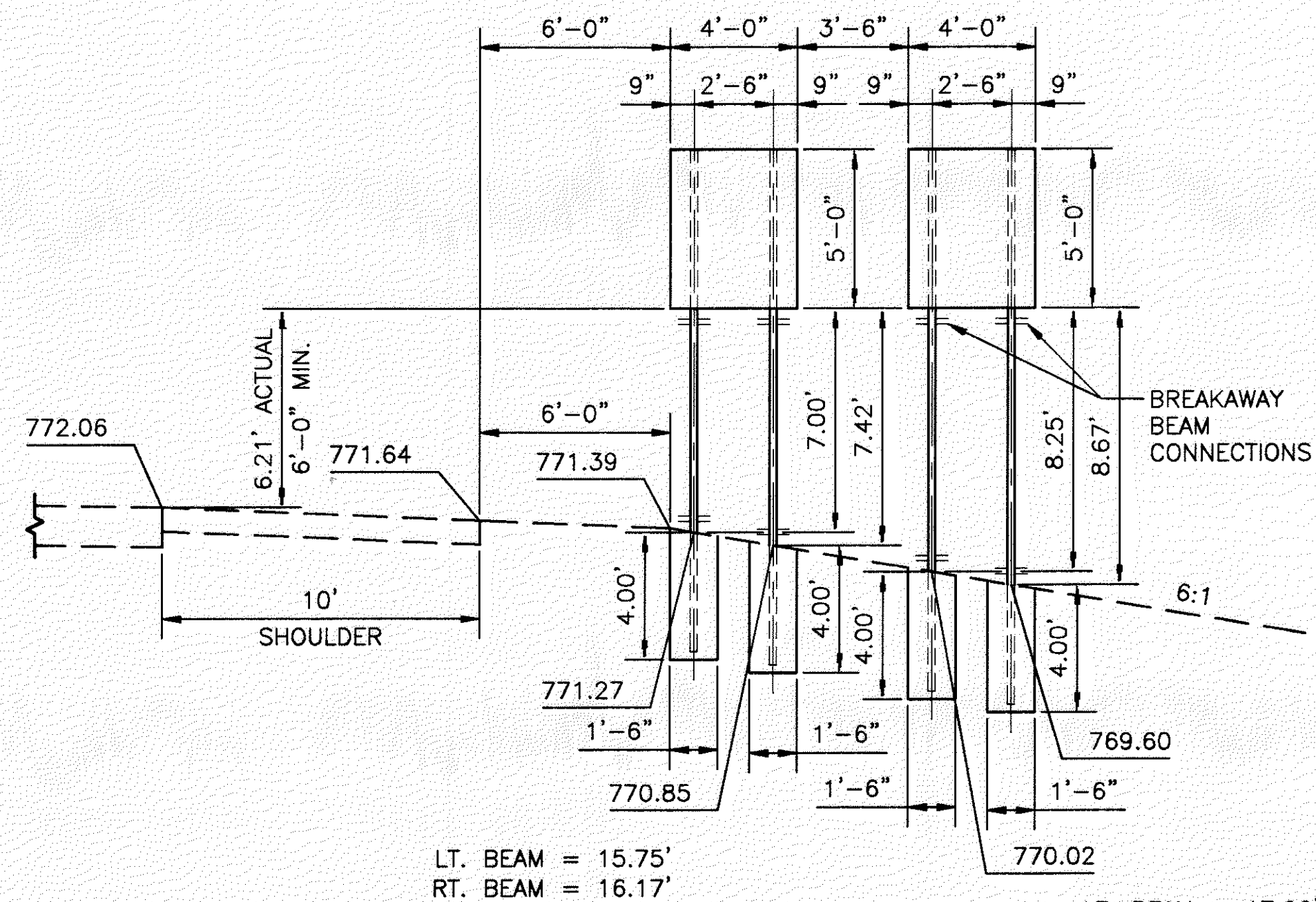
STA. 36+35, S.R. 615 S.B.  
OVERHEAD SIGN SUPPORT  
TC-12.30, DESIGN NO. 4, 22 FT. ARM

36



STA. 43+85, S.R. 615 S.B.  
OVERHEAD SIGN SUPPORT  
TC-12.30, DESIGN NO. 3, 15 FT. ARM

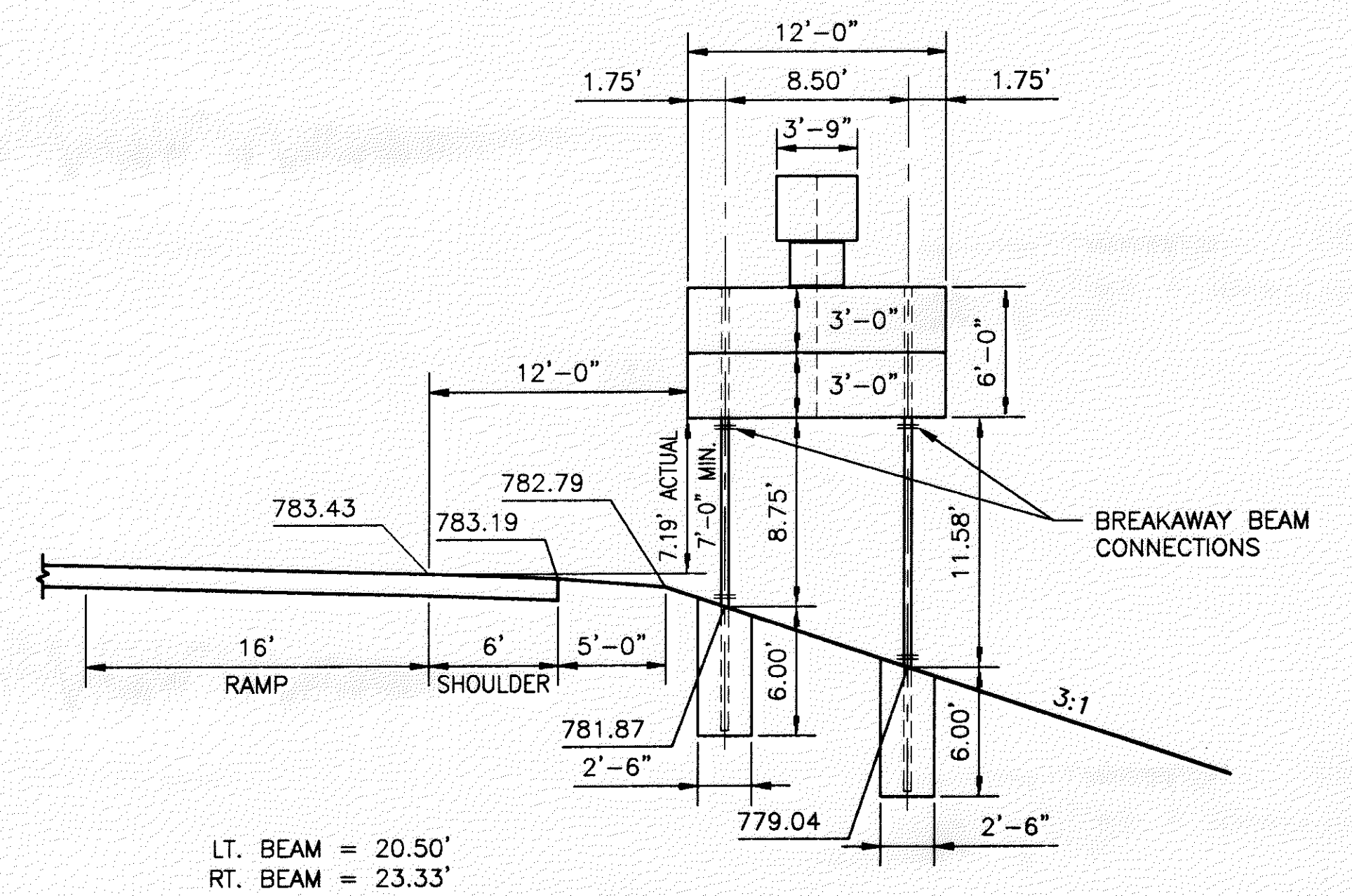
48



LT. BEAM = 15.75'  
RT. BEAM = 16.17'

STA. 46+28, I-90 W.B.  
4 - S4x7.7 BEAM SUPPORTS

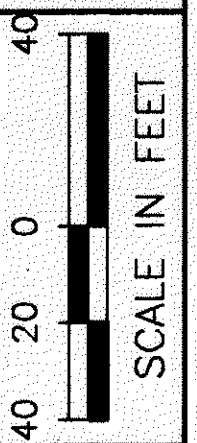
109 & 110



LT. BEAM = 20.50'  
RT. BEAM = 23.33'

STA. 93+60, RAMP "A"  
2 - W10x12 BEAM SUPPORTS

89



CALCULATED  
A.E.P.  
CHECKED  
I.M.H.

S.R. 615  
OVERHEAD AND GROUND MOUNTED SIGN ELEVATION VIEWS

LAK-IR90/SR615-9.26/1.51