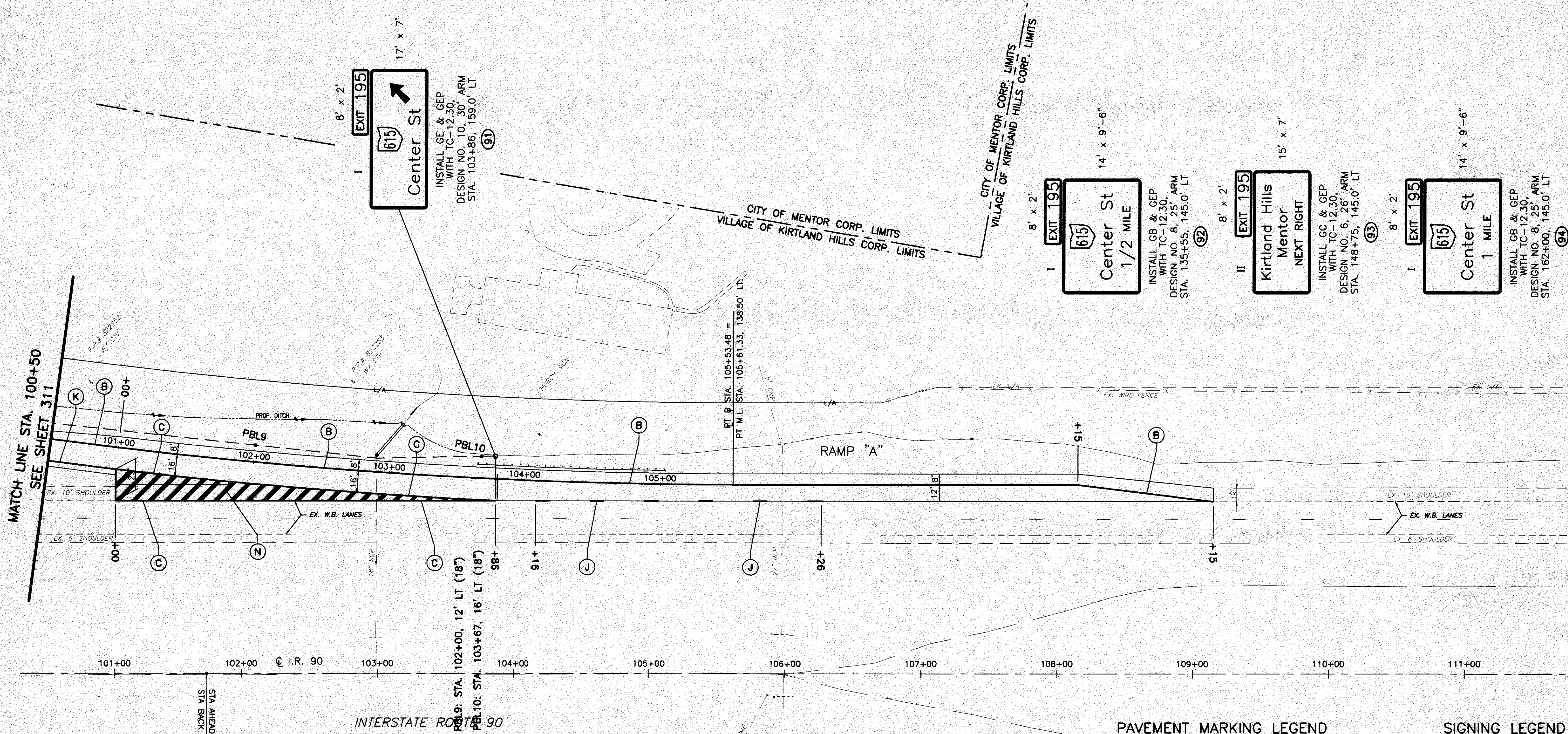


DATE: 10-08-01 - H:\CT\97125\SDSK\TRAFFIC\97125T25.DWG - PLOT SCALE = 1 : 1



MATCH LINE STA. 100+50
SEE SHEET 311

101+00 102+00 103+00 104+00 105+00 106+00 107+00 108+00 109+00 110+00 111+00

STA AHEAD: 101+74.57
STA BACK: 101+67.55

INTERSTATE ROUTE 90

PBL 9: STA. 102+00, 12' LT (18")
PBL 10: STA. 103+67, 16' LT (18")

SIGN LOCATIONS

SIGN LOCATIONS OF EXISTING AND PROPOSED SIGNS ON THE PLANS ARE APPROXIMATE. THE CONTRACTOR PRIOR TO ERECTION OF ALL SIGN SUPPORTS (POSTS, BEAMS, AND OVERHEADS) SHALL STAKE THE PROPOSED LOCATION, INCLUDING OFFSET. OVERHEAD SUPPORT LOCATIONS SHALL ALSO INCLUDE FOUNDATION ELEVATIONS. THE ENGINEER SHALL APPROVE ALL SUPPORT LOCATIONS AND MAY ADJUST THE LOCATION TO CORRECT SLOPE AND SUBSURFACE DIFFICULTIES, SIGN SIGHT DISTANCE OBSTRUCTIONS, IMPROVE SAFETY AND ELIMINATE OVERHEAD OBSTACLES.

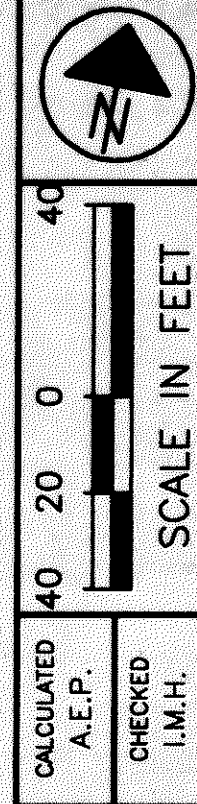
PAYMENT FOR STAKING SHALL BE INCIDENTAL TO THE VARIOUS SIGN SUPPORT ITEMS.

PAVEMENT MARKING LEGEND

- (A) ITEM 828 - CENTER LINE, DOUBLE, SOLID
- (B) ITEM 828 - EDGE LINE, WHITE
- (C) ITEM 828 - CHANNELIZING LINE, 8"
- (D) ITEM 828 - STOP LINE
- (E) ITEM 828 - CROSSWALK LINE
- (F) ITEM 828 - LANE ARROW
- (G) ITEM 828 - WORD "ONLY" ON PAVEMENT, 72"
- (H) ITEM 828 - ISLAND MARKING, YELLOW
- (I) ITEM 828 - 24" TRANSVERSE LINE, YELLOW, 12' C/C
- (J) ITEM 828 - LANE LINE
- (K) ITEM 828 - EDGE LINE, YELLOW
- (L) ITEM 828 - CENTER LINE, DOUBLE, SOLID & BROKEN
- (M) ITEM 828 - CURB MARKING, YELLOW
- (N) ITEM 828 - 24" TRANSVERSE LINE, WHITE, 12' C/C

SIGNING LEGEND

- EXISTING SIGN TO REMAIN OR RELOCATE AS SHOWN
- EXISTING SIGN TO BE REMOVED
- PROPOSED SIGN



CALCULATED
A.E.P.
CHECKED
I.M.H.

WB I-90 EXIT RAMP
SIGNING AND PAVEMENT MARKING PLAN

LAK-IR90/SR615-9.26/1.51

312
393